

**Wolfeboro Board of Selectmen  
Meeting Minutes  
Unapproved  
February 20, 2013**

**Members present:** Chairman Linda Murray, Vice-Chairman Sarah Silk, Dave Senecal, Chuck Storm and Dave Bowers.

**Members absent:** None.

**Staff present:** Town Manager David W. Owen, Finance Director Pete Chamberlin, Director of Public Works Dave Ford, Director of Parks and Recreation Ethan Hipple and Recording Secretary Amelia Capone-Muccio.

Chairman Murray opened the meeting at 6:30 PM.

**Non-Public Session**

Mr. Owen stated a non-public session is not needed unless the Board would like to review non-public minutes.

The Board tabled review of non-public minutes until the next meeting.

**Consideration of Minutes**

➤ **2/05/13**

Chairman Murray amended page one, the last paragraph, line four change "vehicle" to "highway garage".

**Member Sarah Silk moved the Wolfeboro Board of Selectmen to accept the minutes of February 5, 2013 as amended. Chuck Storm seconded. Members voted and being none opposed, the motion passed.**

➤ **2/06/13**

Ms. Silk amended page one, the third line from the bottom to add the following to the sentence: "as the contract notes it is 10% of the settlement". She added the following to page nine under Committee Reports: "Carroll County Transit now provides transportation to White Mountain Medical Center located on Rt. 16 in Wakefield".

Chairman Murray amended page four, the last paragraph above the last motion, to switch the word "from" to "to" and the word "to" to "for". She amended page five, the fifth paragraph to change the word "Public Works" to "Highway".

**Member Sarah Silk moved the Wolfeboro Board of Selectmen to accept the minutes of February 6, 2013 as amended. Chuck Storm seconded. Members voted and being none opposed, the motion passed.**

### **Public Input**

Marshall Hewitt of 43 Lang Pond Road joined the Board for discussion to briefly express some residents concern about the continuing dust and erosion deterioration of Lang Pond Road in Wolfeboro. He provided a 17 page document outlining their concerns, including pictures and other documentation regarding the ongoing dust problem. (See attached document for more information)

Mr. Bowers questioned if there are regulations on logging.

Mr. Hewitt replied he contacted NH DES and they do not have any.

Chairman Murray questioned the portion of the road being in Tuftonboro.

Dave Ford (Director of Public Works) replied that the town line is in the area of 50 Lang Pond Road and noted he will be meeting with the Town of Tuftonboro on March 12, 2013 at 9:30 where they could go to further discuss the issues.

Chairman Murray thanked him for the information and the Board will take it under advisement.

### **Public Hearings**

#### **Temporary Event Permits**

##### **A. Back Bay Hockey Association to hold a Plunge on March 24, 2013 (ice date May 4, 2013) from 8:30 AM to Noon at Carry Beach.**

Chairman Murray opened the public hearing.

Cynthia White joined the Board for discussion and explained that this is a new fundraiser for the Hockey program and they will check the lake one week before the event and will advise if they will need to postpone the event. She questioned if the lot is plowed in the winter season.

Ethan Hipple (Director of Parks and Recreation) replied it is to allow access to the lake.

Ms. White questioned if they are able to use the street for parking.

Chairman Murray replied that she does not believe they will but advised they should check with the Police Department.

Being no others to speak for or against the request, Chairman Murray closed the public hearing.

Ms. Silk noted they should apply for a sign permit if needed.

Member Sarah Silk moved the Wolfeboro Board of Selectmen to approve the issuance of a Temporary Event Permit for Back Bay Hockey Association to hold a Plunge on March 24, 2013 (ice date May 4, 2013) from 8:30 AM to Noon at Carry Beach. Chuck Storm seconded. Members voted and being none opposed, the motion passed.

- B. Brewster Academy to hold On the Green I-Arts & Crafts Festival on July 5-7, 2013 from 10:00 AM-5:00 PM (Sunday until 4:00 PM) at Brewster Academy Monument Field.

Chairman Murray opened the public hearing.

Christine Brown joined the Board and stated this is an annual event run as in years past and that these programs help fund day student scholarships.

Being no others to speak for or against the permit, Chairman Murray closed the public hearing.

Ms. Silk noted they will need tent and sign permits.

Member Sarah Silk moved the Wolfeboro Board of Selectmen to approve the issuance of a Temporary Event Permit for Brewster Academy to hold On the Green I-Arts & Crafts Festival on July 5-7, 2013 from 10:00 AM-5:00 PM (Sunday until 4:00 PM) at Brewster Academy Monument Field . Chuck Storm seconded. Members voted and being none opposed, the motion passed.

- C. Brewster Academy to hold Summer Tradition-Arts & Crafts Festival on July 19-21, 2013 from 10:00 AM-5:00 PM (Sunday until 4:00 PM) at Brewster Academy Monument Field.

Chairman Murray opened the public hearing.

Christine Brown joined the Board and stated this is an annual event run as in years past and that these programs help fund day student scholarships.

Being no others to speak for or against the permit, Chairman Murray closed the public hearing.

Ms. Silk noted they will need tent and sign permits.

Member Sarah Silk moved the Wolfeboro Board of Selectmen to approve the issuance of a Temporary Event Permit for Brewster Academy to hold Summer Tradition-Arts & Crafts Festival on July 19-21, 2013 from 10:00 AM-5:00 PM (Sunday until 4:00 PM) at Brewster Academy Monument Field . Chuck Storm seconded. Members voted and being none opposed, the motion passed.

- D. Brewster Academy to hold On the Green II-Arts & Crafts Festival on August 9-11, 2013 from 10:00 AM-5:00 PM (Sunday until 4:00 PM) at Brewster Academy Monument Field.

Chairman Murray opened the public hearing.

Christine Brown joined the Board and stated this is an annual event run as in years past and that these programs help fund day student scholarships.

Being no others to speak for or against the permit, Chairman Murray closed the public hearing.

Ms. Silk noted they will need tent and sign permits.

**Member Sarah Silk moved the Wolfeboro Board of Selectmen to approve the issuance of a Temporary Event Permit for Brewster Academy to hold On the Green II-Arts & Crafts Festival on August 9-11, 2013 from 10:00 AM-5:00 PM (Sunday until 4:00 PM) at Brewster Academy Monument Field . Chuck Storm seconded. Members voted and being none opposed, the motion passed.**

**E. NH Boat Museum to hold Model Yacht Regattas on April 2-November 19, 2013, Tuesdays only, from 12:00 Noon to 5:00 PM off the Bridge Falls Path.**

Chairman Murray opened the public hearing.

Mark Whitehead joined the Board and stated this is the Tuesday Model Boat sailing they have run on Tuesdays in the past.

Being no others to speak for or against the permit, Chairman Murray closed the public hearing. She noted their insurance expires on June 21<sup>st</sup> and will need to submit a new certificate.

Ms. Silk noted they will need a sign permit.

**Member Sarah Silk moved the Wolfeboro Board of Selectmen to approve the issuance of a Temporary Event Permit for NH Boat Museum to hold Model Yacht Regattas on April 2-November 19, 2013, Tuesdays only, from 12:00 Noon to 5:00 PM off the Bridge Falls Path. Chuck Storm seconded. Members voted and being none opposed, the motion passed.**

**F. NH Boat Museum to hold International Footy Regatta on May 4, 2013 from 8:00 AM to 5:00 PM off the Bridge Falls Path and to have a tent set up.**

Chairman Murray opened the public hearing.

Mark Whitehead joined the Board and stated this is new event for radio controlled boats (12") and there will be about 15 of them.

Being no others to speak for or against the permit, Chairman Murray closed the public hearing.

Ms. Silk noted they will need a tent permit.

**Member Sarah Silk moved the Wolfeboro Board of Selectmen to approve the issuance of a Temporary Event Permit for NH Boat Museum to hold International Footy Regatta on May 4, 2013 from 8:00 AM to 5:00 PM off the Bridge Falls Path and to have a tent set up. Chuck Storm seconded. Members voted and being none opposed, the motion passed.**

**G. NH Boat Museum to hold a National 1 M Soling Regatta on June 21-23, 2013 from 8:00 AM to 5:00 PM off the Bridge Falls Path and to have two tents set up.**

Chairman Murray opened the public hearing.

Mark Whitehead joined the Board and stated this is the championship for the Tuesday sailing boats and noted they will run a practice on the 21<sup>st</sup>.

Being no others to speak for or against the permit, Chairman Murray closed the public hearing.

Ms. Silk questioned what a soling is.

Mr. Whitehead replied it is a class of boat, which was shrunk to 1 meter and noted they will seek permission to use the parking at the Railroad Station for back up if needed.

**Member Sarah Silk moved the Wolfeboro Board of Selectmen to approve the issuance of a Temporary Event Permit for NH Boat Museum to NH Boat Museum to hold a National 1 M Soling Regatta on June 21-23, 2013 from 8:00 AM to 5:00 PM off the Bridge Falls Path and to have two tents set up. Chuck Storm seconded. Members voted and being none opposed, the motion passed.**

**H. Hospital Aid Association, Inc. to hold the 76<sup>th</sup> Hospital Aid Street Fair on August 2-3, 2013 (tents erected July 28<sup>th</sup> and removed August 5<sup>th</sup>) on Monument Field.**

Chairman Murray opened the public hearing.

Bob and Jane Wass joined the Board for discussion and stated this is the 76<sup>th</sup> annual event and their 11<sup>th</sup> year volunteering.

Being no others to speak for or against the permit, Chairman Murray closed the public hearing.

Ms. Silk noted the notes on the permit and stepped down from the vote.

**Member Chuck Storm moved the Wolfeboro Board of Selectmen to approve the issuance of a Temporary Event Permit for Hospital Aid Association, Inc. to hold the 76<sup>th</sup> Hospital Aid Street Fair on August 2-3, 2013 (tents erected July 28<sup>th</sup> and removed August 5<sup>th</sup>) on Monument Field. Dave Bowers seconded. Members voted (Sarah Silk-abstained) and being none opposed, the motion passed.**

**I. Wolfeboro Parks & Recreation Department to hold Bike and Walk to School and Work Day on May 10, 2013 from 7:00 AM to 10:00 AM throughout the town.**

Chairman Murray opened the public hearing.

Ethan Hipple joined the Board for discussion and stated this is an annual event that is well attended.

Being no others to speak for or against the permit, Chairman Murray closed the public hearing.



**Member Sarah Silk moved the Wolfeboro Board of Selectmen to approve the issuance of a Temporary Event Permit for Wolfeboro Parks & Recreation Department to hold Bike and Walk to School and Work Day on May 10, 2013 from 7:00 AM to 10:00 AM throughout the town. Chuck Storm seconded. Members voted and being none opposed, the motion passed.**

**J. Wolfeboro Parks & Recreation Department to hold Movies in the Park on June 14-August 23, 2013 (Fridays only) from dusk to 11:00 PM at Foss Field.**

Chairman Murray opened the public hearing.

Ethan Hipple joined the Board for discussion and stated this is family event where they will show PG-13 movies and will sell concessions.

Being no others to speak for or against the permit, Chairman Murray closed the public hearing.

**Member Sarah Silk moved the Wolfeboro Board of Selectmen to approve the issuance of a Temporary Event Permit for Wolfeboro Parks & Recreation Department to hold Wolfeboro Parks & Recreation Department to hold Movies in the Park on June 14-August 23, 2013 (Fridays only) from dusk to 11:00 PM at Foss Field. Chuck Storm seconded. Members voted and being none opposed, the motion passed.**

**K. Wolfeboro Parks & Recreation Department to hold the Granite Kid Triathlon on July 20, 2013 from 7:00 AM to 1:00 PM (event starts at 9:00 AM) beginning and ending at Brewster Beach.**

Chairman Murray opened the public hearing.

Ethan Hipple joined the Board for discussion and stated this is the 22<sup>nd</sup> annual event and the only change will be an additional Police Officer.

Chairman Murray stated she also received some feedback due to the increased amount of kids to put a divider down Clark Road.

Mr. Hipple agreed they will be addressing such and may need to put a cap on the number of participants.

Being no others to speak for or against the permit, Chairman Murray closed the public hearing.

**Member Sarah Silk moved the Wolfeboro Board of Selectmen to approve the issuance of a Temporary Event Permit for Wolfeboro Parks & Recreation Department to hold Wolfeboro Parks & Recreation Department to Wolfeboro Parks & Recreation Department to hold the Granite Kid Triathlon on July 20, 2013 from 6:00 AM to 1:00 PM (event starts at 9:00 AM) beginning and ending at Brewster Beach. Chuck Storm seconded. Members voted and being none opposed, the motion passed.**

**L. Wolfeboro Parks & Recreation Department to hold the 32<sup>nd</sup> Granite Man Triathlon on August 17, 2013 from 6:00 AM to 1:00 PM (event starts at 9:00 AM) beginning and ending at Carry Beach.**

Chairman Murray opened the public hearing.

Ethan Hipple joined the Board for discussion and stated this is the 32<sup>nd</sup> annual event.

Being no others to speak for or against the permit, Chairman Murray closed the public hearing.

**Member Sarah Silk moved the Wolfeboro Board of Selectmen to approve the issuance of a Temporary Event Permit for Wolfeboro Parks & Recreation Department to hold Wolfeboro Parks & Recreation Department to Wolfeboro Parks & Recreation Department to hold the 32<sup>nd</sup> Granite Man Triathlon on August 17, 2013 from 6:00 AM to 1:00 PM (event starts at 9:00 AM) beginning and ending at Carry Beach. Chuck Storm seconded. Members voted and being none opposed, the motion passed**

**M. Wolfeboro Parks & Recreation Department to hold the 22<sup>nd</sup> Turkey Trot Race on November 23, 2013 from 7:00 AM to 1:00 PM (event starts at 10:00 AM) beginning and ending at the Railroad Station.**

Chairman Murray opened the public hearing.

Ethan Hipple joined the Board for discussion and stated this annual event held the Saturday before Thanksgiving.

Being no others to speak for or against the permit, Chairman Murray closed the public hearing.

**Member Sarah Silk moved the Wolfeboro Board of Selectmen to approve the issuance of a Temporary Event Permit for Wolfeboro Parks & Recreation Department to hold the 22<sup>nd</sup> Turkey Trot Race on November 23, 2013 from 7:00 AM to 1:00 PM (event starts at 10:00 AM) beginning and ending at the Railroad Station. Chuck Storm seconded. Members voted and being none opposed, the motion passed**

### **Bulk Vote**

#### **A. Weekly Manifests:**

1. Manifest dated February 15, 2013
2. Manifest dated February 22, 2013

#### **B. Property Tax Abatements/Refunds**

##### Approvals

- |      |                        |                        |
|------|------------------------|------------------------|
| i.   | Storytelling Rock Road | Tax Map 214, Lot 11    |
| ii.  | 580 Pine Hill Road     | Tax Map 127, Lot 1     |
| iii. | 44 Warren Sands Road   | Tax Map 237, Lot 4     |
| iv.  | 680 N. Main St. Unit 6 | Tax Map 142, Lot 10-15 |
| v.   | 680 N. Main St. Unit 7 | Tax Map 142, Lot 10-16 |

#### **C. Property Tax Credits/Exemptions**

- |    |                  |                    |
|----|------------------|--------------------|
| i. | 7 Sandstrom Road | Tax Map 110, Lot 9 |
|----|------------------|--------------------|

**D. Raffle Permits:**

- i. Hospital Aid Association, Inc.
- ii. High Hopes Foundation of New Hampshire, Inc.

Chairman Murray stated she would like to remove iii to v in section B as she did not have time to seek clarity from the Assessing Department.

**It was moved by Linda Murray for the Wolfeboro Board of Selectmen remove items iii – v in B from the Bulk Vote. Sarah Silk seconded.**

**DISCUSSION:**

Mr. Owen stated that it is his understanding it is a change in the land use tax due to an error.

Chairman Murray stated she questions the acreage of 9.6 acres when it should be 10.

Mr. Senecal stated that he would like to table them all as he has a question on i and ii.

**Dave Senecal amend the motion to include i and ii. Linda Murray seconded. Being none opposed, the motion passed.**

**It was moved by Sarah Silk for the Wolfeboro Board of Selectmen to approve the rest of the Bulk Vote items (A, C & D) as submitted. Dave Bowers seconded. Members voted and being none opposed, the motion passed.**

**New Business**

**A. Commercial Vessel Landing Permit-Winnepesaukee Flagship Corp. d/b/a Mt. Washington Cruises**

Jim Morash joined the Board for discussion and stated they plan to run the same schedule as last year.

**It was moved by Chuck Storm for the Wolfeboro Board of Selectmen to approve the issuance of a Commercial Vessel Landing Permit to the Winnepesaukee Flagship Co. d/b/a Mt. Washington Cruises. Dave Bowers seconded. Being none opposed, the motion passed.**

**B. Steve Guyer, President of Wolfeboro Community TV re: Deliberative Session Broadcast problems**

Steve Guyer joined the Board and stated that he is the new President of Wolfeboro Community TV and he has brought with him the school District's IT Director, Dave Lane, to discuss the issues with the broadcast of the Deliberative Session. He stated that there seems to be a problem broadcasting from the Kingswood Art Center and they are actively looking into the problem. They believe it may have been because of using a 3<sup>rd</sup> party internet service, but are not sure. He stated for the future they will have the IT staff on hand and have also been discussing the use of a "sling box" as well as broadcasting to Metrocast in Belmont.



Dave Lane stated that they apologize for the issues with the broadcast and are working on a solution to prevent the same from happening in the future. He is currently job shadowing Peter Pijoan as well as making contacts with other schools to see how they do it.

Chairman Murray thanked them for coming and taking the time to explain the situation.

Mr. Guyer stated he has a lot of faith in the IT Department and if they have to make some sacrifices to be able to broadcast the Deliberative Session as well as the schools meeting they will.

Peter Pijoan stated a "sling box" is a device they used previously at the library when they had problems with the internet connection, which was resolved by getting a line dedicated to the broadcast. He stated the broadcast to Belmont/Metrocast would be a dedicated fiber line.

### **C. Adoption of NH Flexible Benefit Plan**

Mr. Owen stated that the new flexible benefit plan has been in effect since the first of the year, and the firm that administers it has requested such be adopted formally.

**It was moved by Sarah Silk for the Wolfeboro Board of Selectmen with respect to the adoption of the Town of Wolfeboro, NH Flexible Benefit Plan (the "Plan"), the following resolutions are hereby adopted:**

**RESOLVED:** That the Plan be adopted in the form attached hereto, which Plan is hereby adopted and approved;

**RESOLVED FURTHER:** that the appropriate officers of the Company be, and they hereby are, authorized and directed to execute the Plan on behalf of the Company;

**RESOLVED FURTHER:** that the officers of the Company be, and they hereby are, authorized and directed to take any and all actions and execute and deliver such documents as they may deem necessary, appropriate or convenient to effect the foregoing resolutions including, with limitation, causing to be prepared and filed such reports, documents or other information as may be required under applicable law.

**Chuck Storm seconded. Being none opposed, the motion passed.**

### **D. Monthly Budget Expenditures and Revenue Report**

Pete Chamberlin joined the Board for discussion and noted that he has backed out accrued payroll.

Chairman Murray noted the budget is slow at this point until the new budget is passed.

### **E. Posting of Weight Limits on Town Roads**

Dave Ford joined the Board for discussion and stated that at this point he is not ready to post the roads until sometime in March, but would like to have such approved in order to put in place when the time comes.

Chairman Murray stated he will provide the normal exemptions.

Mr. Ford replied he does have exemptions for delivery vehicles, etc. They need to contact the Public Works Department to make arrangements.

**It was moved by Chuck Storm for the Wolfeboro Board of Selectmen to approve the request of the Director of Public Works to post selected town roads with a 10-ton weight limit with an effective date set by the Public Works Director. Dave Bowers seconded. Being none opposed, the motion passed.**

#### **F. NH DOT's 10-year Transportation Improvement Plan-Wolfeboro's Priority Projects**

Dave Ford joined the Board for discussion and stated that the State has a 10-year Transportation Improvement Plan that they update every two years. He stated that the improvements from Pickering Corner to the Wolfeboro/Alton Town line have been a priority but have been moved off the list due to State funding. He stated that each year the Planning Commission make application to be on the list and he is seeking the Board's support for this project to be included again.

Chairman Murray stated the town has put in \$99,000 for preliminary design and looked at three alternatives.

Mr. Ford replied yes, it was adopted by the Board as a plan and is now moving to the engineering phase. He stated this is a \$7 million dollar project that is supported by the Chamber of Commerce and the Planning Board.

Mr. Owen stated there is a House Bill to increase the gas tax by four cents for three years and to raise the vehicle registration by \$15 which seems to be generating a lot of support. He stated that 1/3<sup>rd</sup> of the State Roads are now classified in poor condition.

**It was moved by Sarah Silk for the Wolfeboro Board of Selectmen to approve and sign the letter to the NH Department of Transportation in support of including NH Route 28 Improvements in the State's 10-year Transportation Improvements Program. Chuck Storm seconded. Being none opposed, the motion passed.**

#### **➤ Highway Garage Fire Update**

Mr. Ford stated that a fire investigator came to review the scene from International Trucks and they have not heard from Primex with regards to the value of loss. He stated they do need a place to store equipment and he provided a proposed lease for Harriman's two-bay garage adjacent to the Public Works Garage.

Mr. Owen stated he has forwarded the proposed lease to Town Counsel.

Chairman Murray stated that she would like time to review the lease.

Mr. Bowers stated they need to do something to provide storage of the equipment and he is fine with it as long as Town Counsel reviews it.

Ms. Silk stated they meet again on March 6<sup>th</sup>, and they have a policy not to submit things at meetings.

**It was moved by Dave Bowers for the Wolfeboro Board of Selectmen to approve the lease with Harriman Construction for the lease of the two-bay garage contingent upon Town Counsel review. Chuck Storm seconded.**

#### ***DISCUSSION:***

Mr. Senecal stated he is fine with the lease as long as Town Counsel reviews it; they need to provide storage for the equipment.

Ms. Silk would like a provision regarding hazardous waste on the site stating the Town is not responsible for pre-existing issues.

Chairman Murray questioned the cost to heat the facility.

Brad Harriman replied the building has not been heated in six years. It would depend on use but it is oil forced hot air.

Mr. Ford replied it would most likely be less than they budgeted for now as it is a smaller space.

Chairman Murray asked Mr. Harriman if he would agree to a clause regarding the hazardous waste.

Mr. Harriman replied he would.

**Members voted, Sarah Silk-opposed all others in favor, the motion passed.**

#### **G. Parks & Recreation Facility Use Permits-Guidelines and Fees**

Ethan Hipple joined the Board for discussion and provided the proposed draft Facility Recurring-Use permit. He stated they have already been doing such on some level and felt it should be formalized as well as a new inquiry of a local business that would like to rent Paddleboards at a Town Beach. He stated that he proposes allowing one vendor per location and limiting it to local businesses.

Ms. Silk suggested adding some language that an insurance certificate should be provided and reminder alcoholic beverages are not allowed on town property.

Chairman Murray stated she has an issue with the vendors and would like to see a specific spot outlined and when the permit would renew.

Mr. Hipple replied the permit would need to be renewed, but the location would be determined on a case by case review.

Mr. Bowers questioned how he would choose the vendor.

Mr. Hipple replied the permit would go to the existing vendor.

Chairman Murray stated that she has a concern that there is no set location and, for example, there is not a lot of space at Albee Beach on a hot summer day and she hates to make it worse by adding a commercial business. She is fine with the rest of the permit except the commercial part.

Mr. Hipple replied it will be tough to define the specific location as they don't know what someone may propose.

Chairman Murray questioned if they will allow storage at the beach.

Mr. Hipple replied in regards to the current request, they will not.

Chairman Murray stated she has a strong concern about having a commercial business at the town beaches.

Mr. Hipple stated the reason he supported it was because it was a good way for the public to participate in recreational activity.

**It was moved by Sarah Silk and seconded by Chuck Storm to have the revisions discussed above made to the draft and to submit it for further discussion at the Board's March 6<sup>th</sup> meeting. Members voted and being none opposed, the motion passed.**

#### **H. Parks & Recreation 2013 Summer Programs Fee Rates**

Ethan Hipple joined the Board for discussion and provided the proposed 2013 Summer Program rates and reviewed it with the Board. It shows some increases in program rates.

Chairman Murray stated with regard to the rate schedule she appreciates the discussion she had with Mr. Hipple today and thanked him.

Ms. Silk stated that she applauds his efforts to provide a variety of programs at reasonable rates.

**It was moved by Chuck Storm and seconded by Sarah Silk to approve the 2013 Summer Program Fee rates as presented. Members voted and being none opposed, the motion passed.**

#### **I. Voters Guide 2013**

Mr. Owen provided the draft 2013 Voters Guide and stated it will be published in the March 7<sup>th</sup> edition of the Granite State News.

Chairman Murray suggested adding the information about the costs of Bond Anticipation Notes (BAN) interest regarding the bonded items.

Mr. Owen replied such language is included in the Warrant Articles and felt the intent of the guide was to provide a description of the article, but if the Board would like such included he will put it in.

Mr. Bowers stated he feels it is fine the way it is.

Ms. Silk questioned if the Deliberative Session will be shown again.

Mr. Pijoan replied it will run the weekend before the election.

**It was moved by Dave Senecal and seconded by Sarah Silk to approve the Voters Guide for 2013 as submitted for publication in the Granite State News. Members voted and being none opposed, the motion passed.**

### **J. Town Election preparation**

The Board agreed all members would be available all day at the polls.

Chuck Storm requested review by the Town Attorney if he is able to be in the building.

### **Any Other Business**

Chairman Murray reminded the public next week is Winter Carnival and the pancake breakfast will be March 2<sup>nd</sup> at Garwoods from 7:00 AM to 10:00 PM, Belgian Horse rides at Abenaki and a movie on Wednesday along with other activities.

Ms. Silk noted the Freestyle Division Ski Team had 60 competitors and 300 hundred spectators with 10 Abenaki team members taking top spots. She also asked if the Emergency Response Committee has a storm checklist listed on the website.

Mr. Owen replied he would check.

### **Town Manager's Report**

Mr. Owen reported the following:

- An Employee fell in the parking lot today and was taken to the emergency room and fortunately nothing was broken, but is sore.
- A news release was sent regarding the State Aid Grant funding for the waste water reimbursement of bonds and that \$3 million dollars has been included in the budget, but such will not be enough to cover all the bonds.
- He received communication from NH DOT that they plan to replace guardrails on Rt. 28 from Wolfeboro Falls out to the area of Rt. 109 (near 7 Eleven).
- The town has received its new Tax Equalization Rate at 105.8%, which is up from last year, but is still within acceptable range.
- Three incumbent Hawkers & Peddlers have provided their renewed requests and one spot remains open.



- They have received the Customer Satisfaction Survey results at this point with an 11.7% response rate and it seems based on such the building permit process is being well received.
- The Town reports are printed and have been shipped; they will be available next week.
- He will be out of the office the first week of March and Mr. Houseman will be staffing the next Board meeting.

### **DISCUSSION:**

Chairman Murray stated in regards to the surveys that only 3.7% reported an unpleasant experience and noted the Administrative Assistant got the highest approval rating.

Mr. Bowers stated it seems that Department got some bad press in the pass and that the survey was a good idea.

Mr. Owen noted the intent was to do the survey for a full year.

### **Committee Reports**

Mr. Storm reported the Planning Board met to discuss a change in the office area at Piping Rock and GI Plastek will be expanding and almost doubling in size. They continue to review the Rt. 28 corridor.

Chairman Murray reported she also attended the following:

- She attended the Chamber's monthly meeting.
- She attended the EDC meeting in which they discussed the website and some additions for Economic Development and an EDC page too. She noted they also discussed providing a link for commercial real estate for sale to help promote business to come to Wolfeboro and they are also looking at a section of Lehner Street for revitalization.

Ms. Silk reported the following:

- She attended the Hazardous Waste Meeting in Alton where they discussed the DEA's take back program and its advertising. She stated they will be having a collection in April, but Alton will not participate as they take medications all the time.
- The intermunicipal agreement will be discussed at the Board's next meeting and noted that the Town of Tuftonboro is seeking to become a member and such will need to be addressed before the collections start for the year.

### **Public Comment**

Peter Pijoan stated that the weekend prior to Town Elections on March 12<sup>th</sup>, WCTV will run the Deliberative Session on Channel 26 Friday to Sunday.

Chairman Murray noted candidates night will be March 7<sup>th</sup> at 7:00 PM at the Wolfeboro Public Library and elections will be March 12<sup>th</sup> at All Saint's Episcopal Church from 8:00 AM to 7:00 PM.

### **Questions from the Press**

None.

*Being no further business before the Board, Chairman Murray entertained a motion to adjourn.*

**Member Chuck Storm moved the Wolfeboro Board of Selectmen to adjourn at 9:08 PM.**  
**Member Dave Bowers seconded. Being none opposed, the motion passed.**

Respectfully submitted,  
**Amelia Capone-Muccio**  
Recording Secretary

# **CONTINUING DUST AND EROSION DETERIORATION OF LANG POND ROAD**

Submitted by the residents of  
Lang Pond Road, Wolfeboro, NH  
February, 2013

Contacts: Marshall Hewitt, 43 Lang Pond Road, 569-2395  
Mark and Jacqueline McLaughlin, 50 Lang Pond Road, 515-3412

8-20-13  
BUS-attachment

# Lang Pond Road-Mirror Lake Watershed



# Lang Pond Road Recent History

- 1970s: Rough single lane most of length, very limited usage, mainly farm vehicles and hunters, road plowed by Wolfeboro to turnaround, remainder unplowed and closed through winter from Wolfeboro turnaround to 109A in Tuftonboro, 10-15 vehicles/day
- 1980s – 1990s: Tuftonboro widens road, first major logging operation since 1940s in Wolfeboro and Tuftonboro sections, housing lots developed
- 2000 – Present: Wolfeboro paves to Robin Acres, road plowed to 109A through winter by private operators, annual increased usage year-round as shortcut between 109/Wolfeboro and 109A/Tuftonboro by all types of vehicles, Sandstrom “Piper” Road improved and widened NW to Mirror Lake, second logging operation at Tuftonboro end, 10 vehicles can pass in one minute during peak months creating hanging dust cloud throughout neighborhood
- 2009: Third logging operation, midway near Sandstrom-Piper Roads intersection across from “Banfield-Piper” lot in Tuftonboro
- Spring 2012 : Wolfeboro drainage and surface treatment project
- 2013: Fourth (current) logging operation, Tuftonboro and Wolfeboro sides of watershed, continued heavy general traffic
- Present Situation - Daily Traffic Year Round:
  - Passenger vehicles: 109/109A short-cutters, boat hauling to/from Libby ramp, beach traffic at Mirror Lake
  - Delivery trucks: oil, FEDEX/UPS, lumber, etc.
  - Utility trucks: septic, electric/cable, various contractors
  - Heavy trucks: gravel trucks to/from nearby pits, large tractor trailer rigs, logging trucks and equipment from current and other nearby logging operations (many truckers prefer lower grade and shorter distance of Lang Pond Road to Waumbec and Union Wharf Roads)



# Current Logging Operations

- Tuftonboro and Wolfeboro sides of watershed along Lang Pond Road
- Approximately 300,000 board feet
- Large clear-cut work yards for log and chip processing and loading adjacent to Lang Pond Road and Mirror Lake watershed
- Within 50 feet of residences
- Daily operations starting as early as 2:30 AM and continuing past dark (despite noise ordinance)
- Very heavy daily and nightly usage by logging equipment and logging trucks along entire road length
- New Wolfeboro drainage field bridged for logging equipment

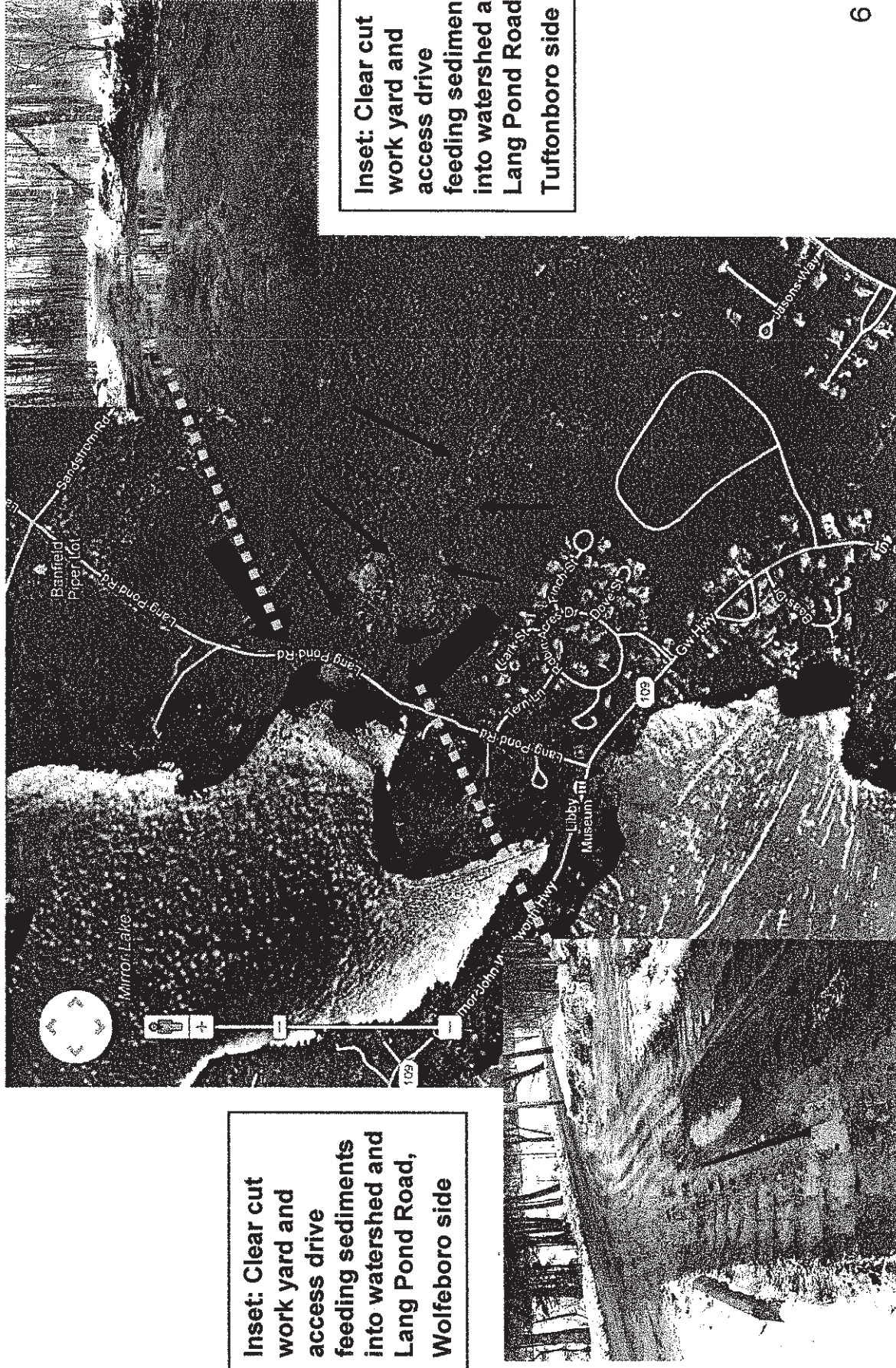
# Lang Pond Road: Approximate Areas of Current Logging Operation





# Lang Pond Road: Approximate Down-Slope Drainage and Erosion Directions

Extrapolated from U.S. Geological Survey Map, Wolfeboro Quadrant



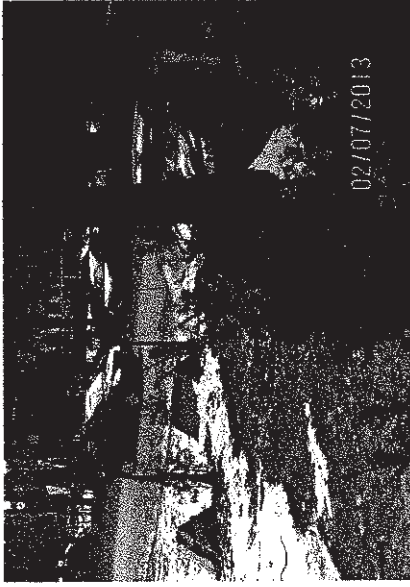
# The Dust

- Dust directly proportional to annually increasing daily usage
- Dust is year-round, heavy in both summer and winter, permeates entire neighborhood
- Five year-round households directly on Lang Pond Road dirt section in Wolfeboro, age ranges from young children through senior, several other nearby households also exposed to dust
- Numerous respiratory health issues by residents, some very serious ranging from asthma to COPD, at least one directly attributed to road dust ingestion
- Dust temporarily abated in weeks following Spring 2012 drainage project and treatment with calcium chloride, steadily increased to previous levels over summer, repeated requests for additional treatment through summer not addressed until Fall
- Warm weather treatments do not control dust in winter
- 2012 drainage project and 2013 clear-cut logging yard have removed only remaining natural dust barriers, homes now exposed to dust from prevailing winds along full length of road
- Currently NO CHANGE in dust levels since 2012 drainage/surface treatment project
- Speeding is already a problem on the dirt portion, unrelated to paved vs. unpaved surface
- ***“The health and safety of Wolfeboro residents”***

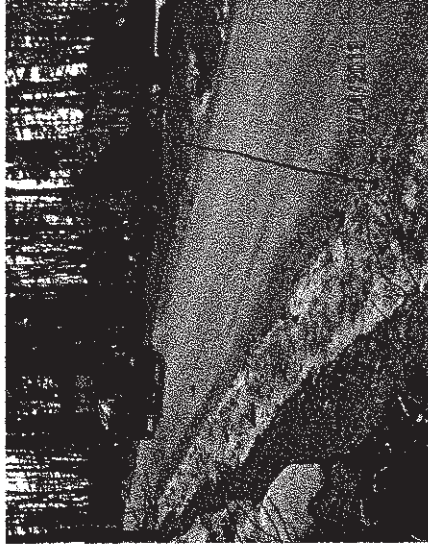


# Typical Daily Mix of Traffic

A sampling only of current winter traffic – summer even busier



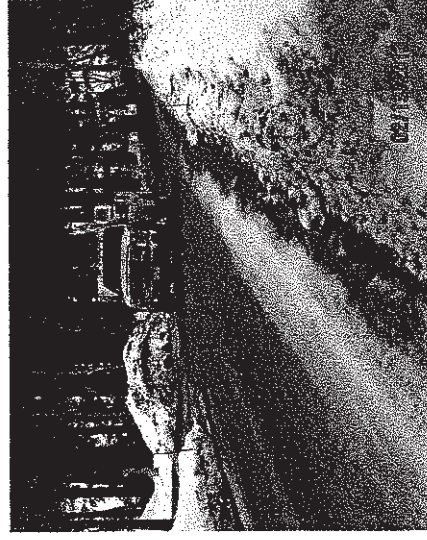
Passenger Vehicles



Contractors



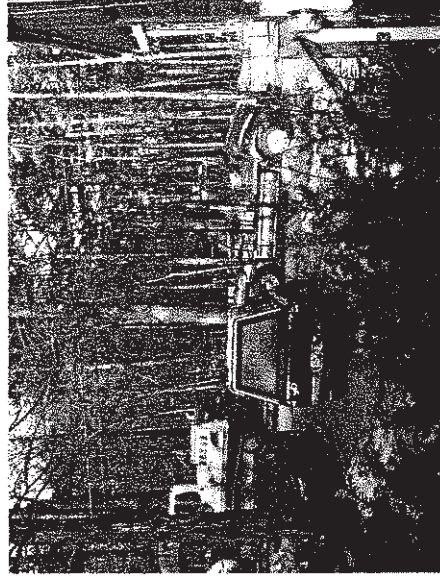
Tractor Trailers



Utility Trucks



Logging Trucks



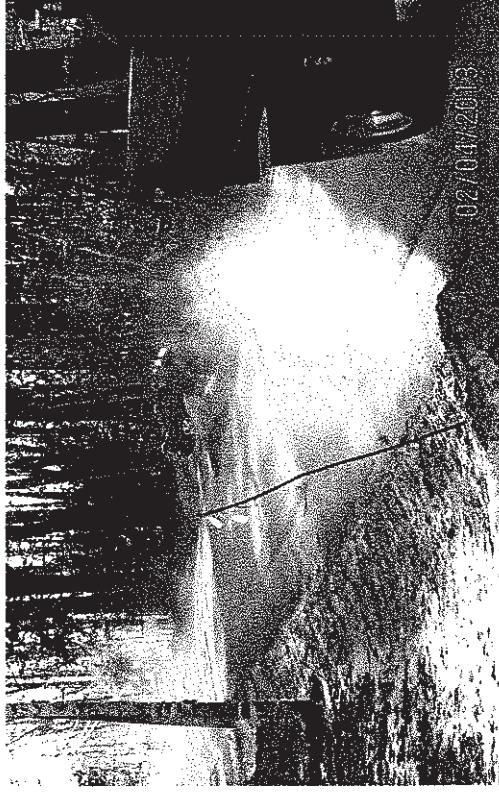
Heavy Equipment



# Dust Generation



Passenger traffic



Commercial traffic



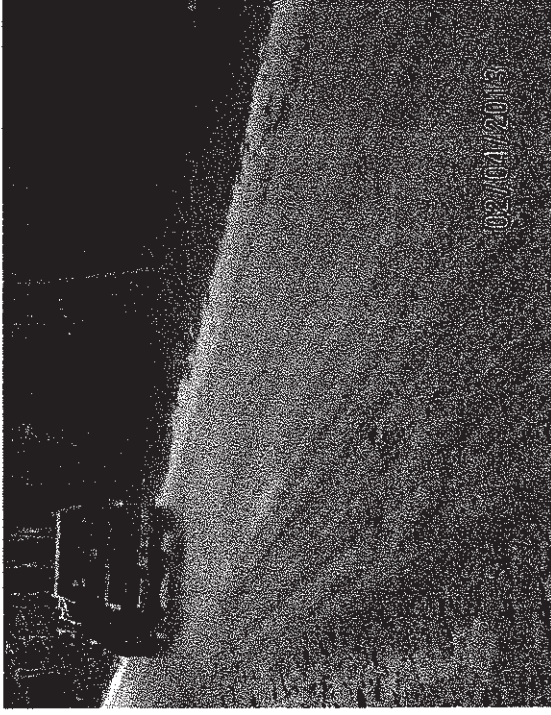
Sequence 1 of 2:  
Delivery Truck Passing



Sequence 2 of 2: Floating dust cloud  
immediately after



# Year-Round All Day Dust Generation from Short-cutters to/from 109-109A



**Morning, Winter**



**Dust Cloud,  
Midday, Autumn**



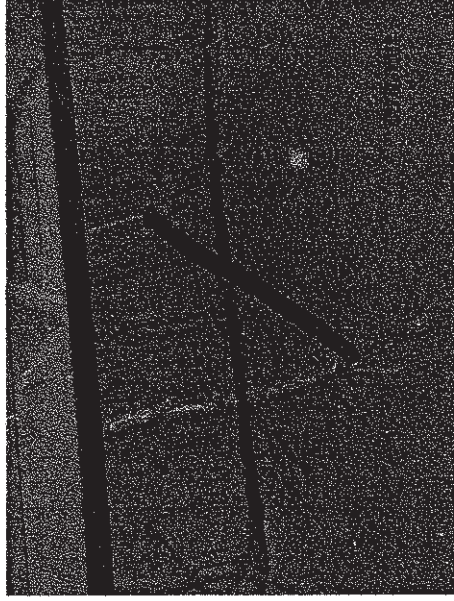
**Porch Furniture, Summer**



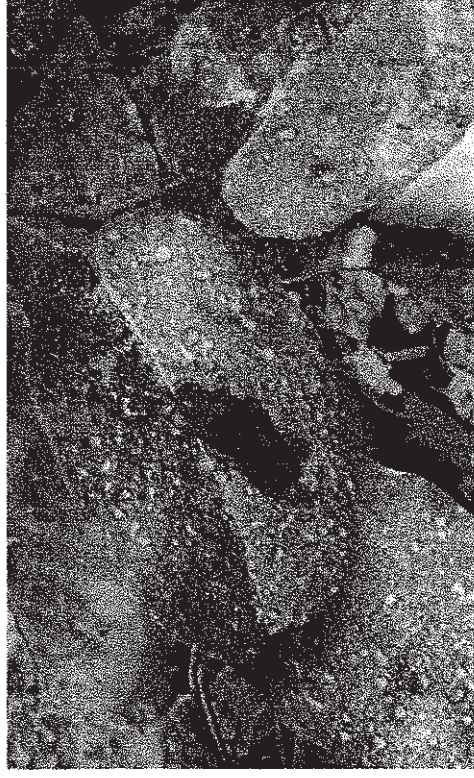
**Sundown, Winter**



# Dust Collection



Lang Pond Road, Wolfeboro: Dust collected on hood of car, one day after car wash, Feb 2013



Lang Pond Road, Wolfeboro: Dust collected on foliage, late summer, 2012



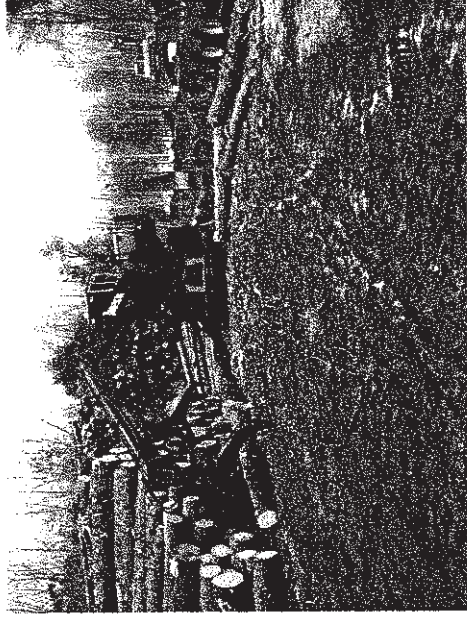
Lang Pond Road, Wolfeboro: Dust collected on ice of Mirror Lake watershed, Feb 2013



Lang Pond Road, Wolfeboro: Dust collected on new snow, Feb 2013



# The Logging Operation, Lang Pond Road, Wolfeboro Side



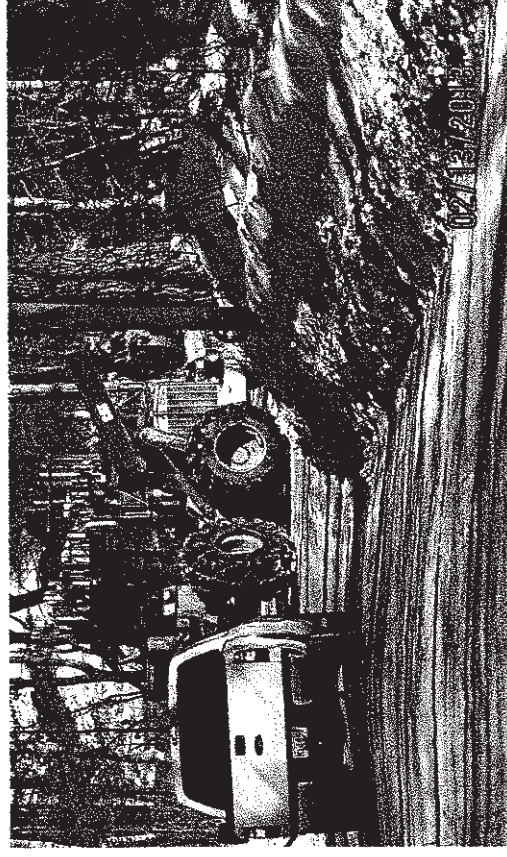
Logging operations in clear cut work yard, Lang Pond Road, Wolfeboro



Mud filled clear cut work yard, Lang Pond Road, Wolfeboro



New drainage field bridged for logging equipment, funneling sediment onto Lang Pond Road and Mirror Lake Watershed



Skidder and logging trucks driving over new drainage field



# The Logging Operation, Lang Pond Road, Wolfeboro Side, Before and After



**BEFORE: Natural wind/dust barrier before clear cutting** ➡



**AFTER: Same location - clear cutting has removed natural wind/dust barrier**



**AFTER: Banking of debris funneling sediments to Lang Pond Road and Mirror Lake**



**BEFORE: Newly built drainage field, first day of clear cutting before access bridge installed**



**AFTER: Drainage field today, after removal of bridge**



**AFTER: Damage to turnaround 13 and Lang Pond Road from logging equipment**



# 2012 Project As Explained to Lang Pond Road Residents

1. Remain as dirt surface with contingency for paving
2. Phase One: rebuild drainage and treat with calcium chloride
3. Observe effect over summer
4. Reapply calcium chloride treatment as needed (not done: *repeated requests for additional treatment through summer not addressed until Fall*)
5. Reassess in Fall (not done)
6. Stakeholders meeting (not done)
7. Move ahead with Phase Two paving if Phase One not working (not done)

# Where to go from Here

- ? **Suggested by some:** Close the road to all but residential access
- ? **Also suggested:** Redirect road behind swamp as Tuftonboro did at 19-Mile Bay Beach area (extensive project and still does not address dust problem in Wolfeboro)
- ✓ **Most Realistic Solution:** Extend the Wolfeboro pavement to turnaround
  - Short distance
  - Drainage base already completed
  - Preserves rustic quality for majority of road
- No more waiting – finish the project for:
  - *Stakeholders: This is a Wolfeboro problem*
  - *Cost Effective Project Management: Reduce project re-start costs, material and labor inflation, continued repair and maintenance to current dirt surface (especially following wear & tear from logging) – new dirt surface is being chopped up daily*
  - ***The immediate “health and safety of Wolfeboro residents”***
- The environmental and usage situations have changed dramatically since 2012 drainage/surface treatment project and current logging. **The 2012 measures are not working.**

# Summary and Conclusion

- This is a long-standing and clear threat to public health, not a mere matter of inconvenience.
- Wolfeboro residents cannot wait any longer for the two towns to continue deliberating back and forth. Action needs to be taken by Wolfeboro now to protect the health and safety of its residents. If this had been a school or hospital zone, the public would have demanded action years ago.
- Serious respiratory ailments in several households.
- Conditions are now worse than ever before.
- Logging has changed and worsened the situation even since Fall 2012.
- The 2012 road treatment measures are not working.

# LETTERS TO THE EDITOR

## The truth about Lang Pond Road

To the Editor:

Michael Hodder's article, "Country Road, Take Me Home," (Jan. 12) vividly captures the nature and history that has made Lang Pond Road the gem that it is. Those of us living there, some for 40 years or more, offer this additional background to underscore how seriously that gem is now threatened.

It is true that herons and loons grace Mirror Lake's abundant waters while cyclists, joggers and nature lovers enjoy a wealth of beauty along the road's course through the woods.

Yet we most directly familiar with the area have brought our deep concern to town officials over the rapidly deteriorating quality of air, water and surrounding ecosystems from the road's overuse, and outright abuse. Though Mr. Hodder's narrative was certainly the case in years past, the present reality is that Lang Pond Road is not at all silent nor is traffic infrequent.

When the current residents first moved there, the road was a rough single lane used only seasonally along much of its length, primarily by farm trucks and tractors. Ten vehicles passing from sunup to sundown was a busy day. Since widened and upgraded at various times and locations for development, logging and other purposes, the road is now the de facto substitute for Waumbuck and Union Wharf Roads between Tuftonboro and Wolfeboro.

At peak times these days, 10 vehicles could pass in a minute. Though officially

posted "Summer Highway," usage is actually year-round. Wolfeboro plows to the town line, but private operators plow the road beyond or simply blaze a lane in four-wheel drive.

Only when snow drifts deeply is it blocked temporarily until someone re-plows and traffic resumes. Snowmobilers struggle along the sides where the road has been plowed down to rutted, rocky dirt.

Traffic ranges from passenger cars to large commercial vehicles. Truck use is particularly heavy, with the road's convenience as a shortcut and lower gradient. Commercial use includes gravel trucks from nearby pits, delivery, oil, septic and logging trucks. Daily into fall, boaters haul trailers to the Libby Museum landing on Winnepesaukee and families crowd their cars along the shoreline to swim in Mirror Lake, further weakening the already unstable bank.

Courtesy is not guaranteed. If anything, the dirt portion attracts a Duke's of Hazard mentality for some who delight in kicking up clouds of dust as walkers and joggers will attest. Neighbors walking the road recently were nearly run down by a speeding motorist who angrily accosted them when they signaled him to slow down.

Beyond this, a deeper environmental problem has been building for years. Public health is not a parenthetical issue. It is the chief concern for residents living there.

Several now suffer chron-

ic respiratory ailments directly caused or exacerbated by constant exposure to road dust. We keep our windows closed year-round as each day clouds of particulates remain suspended in the air we breathe long after vehicles pass. Like the foliage, water surfaces and delicate ecosystems along the road's entire length, our yards and households are coated with a perpetual layer of dust. Drier winter months are actually worse than summer when a rainy day provides at least temporary relief.

Continual pounding from usage the road was never designed for has accelerated erosion with traffic growing year by year. The towns re-grade the road annually, but each rain washes a sediment plume into Mirror Lake, easily viewed from shore and even more dramatically from the air.

The road has become a convenient dumping ground. Perhaps we who live there, and have the most direct stake, put the most care into its daily stewardship. At our own expense for disposal fees, we clean the road, shoreline and lake of garbage from beer cans, broken glass and fast food wrappers to tires, microwaves, dirty pampers and worse.

More than anyone, we residents want to preserve the rustic beauty of Lang Pond Road. That is why we applaud recent plans to improve drainage and road surface, and propose extending the pavement only a short distance on the Wolfeboro side while leaving the remainder of the mile-plus road un-

paved.

This will accomplish two critical objectives: 1) Stabilize the down-slope surface to control continued erosion into Mirror Lake and 2) Address a serious and worsening residential health hazard from traffic dust.

Like Mr. Hodder, we too are saddened to see further change, but sadder still to watch the road's continued deterioration through neglect and lack of public awareness. Regrettably, the change was set into motion years ago with the original widening of the road and consequent increased usage, triggering long-reaching environmental impacts on both public health and the land itself.

Thoughtful action can still preserve the charm of one of our last unpaved roads while responsibly protecting the public interest and welfare. To do nothing would be the real shame.

Marshall Hewitt  
Jackie McLaughlin  
Mark McLaughlin  
Wolfeboro

## Thanks for h

To the Editor:

The Wolfeboro Lions Club would like to thank everyone involved for making the collection of new and used clothing for area children a great success!

Many wonderful things were donated by residents of Wolfeboro and Tuftonboro for this important project. The final totals were 127 hats, 42 scarves, 69 pairs of mittens/gloves, 98 pairs of socks, 84 jackets, 16 snow pants and five pairs of