

ANNUAL REPORT
OF THE
WASHINGTON
SCHOOL DISTRICT



2015
SCHOOL REPORT

**Annual Report of the
WASHINGTON SCHOOL DISTRICT
For the Fiscal Year Ending June 30, 2015
TABLE OF CONTENTS**

Reports:

School District Organization.....	S2
School Board Report	S3
Superintendent of Schools Report.....	S4
Business Administrator’s Report	S5
Assistant Superintendent Report	S6
Director of Curriculum, Instruction & Assessment Report	S9
Washington Elementary School Report	S10
Hillsboro-Deering Middle School Report.....	S11
Hillsboro-Deering High School Report	S13
Duncan-Jenkins Trust Report.....	S15

2016 School Meeting:

Warrant.....	S16
Proposed General Fund Budget – 2016/2017	S18
Proposed Food Service Budget	S21
Proposed Salary Schedules	S22
Tuition Estimates	S23
School Administrative Unit #34 Budget	S23

Enrollment 2015-16 School Year.....	S24
-------------------------------------	-----

Financial Statements:

Report of the School District Treasurer	S26
Balance Sheet	S27
Trust Funds.....	S27
Statement of Expenditures, Detailed.....	S28
Statement of Special Education Costs	S37
Debt Service Schedule	S37
Federal Grants	S37

Minutes of the Washington School Meeting - 2015	S38
---	-----

Cover Photo: Washington Elementary School students and staff, Fall 2015

**WASHINGTON SCHOOL DISTRICT
ORGANIZATION**

Moderator	Guy Eaton
Clerk	Colleen Duggan
Treasurer	Melissa Morin
School Board	Linda Musmanno term to 2016 June Manning term to 2016 Kathy Atkins term to 2017 Gayle Terani term to 2018 Karen Belanger term to 2018
Auditors	Vachon Clukay & Co., PC
Superintendent	Robert A. Hassett, M.Ed.
Business Administrator	Jean E. Mogan, MBA
Assistant Superintendent	Patricia M. Parenteau, M.S., CAGS
Director of Curriculum, Instruction & Assessment	Kevin Johnson, Ed.D.
Washington Elementary School Consulting Principal	Kevin Johnson, Ed.D.
Teachers & Staff	
Erika Sullivan	Kindergarten/Grade 1 Teacher
Tamara Webber	Grades 2-3 Teacher/Leadership Team
Kelli Aldrich	Grades 4-5 Teacher/Curriculum & Assessment
Chris Albertson	Music Teacher
Jeanine Edmunds	Art Teacher
Mary Jo DeBrusk	Physical Education Teacher
Jane Johnson	Special Education Teacher/Leadership Team
Kristine Swain	School Nurse/Secretary
Sharon Oliveira	Paraeducator
Dawn Bilski	Paraeducator
Kathleen Brown	Title 1 Tutor
Camille Gibson	Paraeducator/Library Media Paraprofessional
Linda Kress	Speech & Language Pathologist
Eric Geaumont	Psychologist
Jill Severino	Occupational Therapist
Karen Cota	Certified Occupational Therapy Assistant
Elizabeth Sargent	Maintenance/Janitor
Barbara Jackson	Food Service Director

Washington School Board Report

This has been a year of challenge and change. Change arrived at the start of the school year with Dr. Kevin Johnson, part-time Principal, accepting a part-time curriculum and assessment position with SAU 34. The Board in conjunction with Superintendent Hassett decided to use this development to adjust the staffing and administrative structure at the school for the coming year. It was deemed that the most effective and prudent change would be the implementation of a Leadership Team, consisting of Jane Johnson and Tamara Webber. Dr. Johnson would continue as a consulting Principal for WES. The Board would like to congratulate both the Leadership Team and the staff for the smooth transition that occurred, as well as for another successful year.

From a maintenance and safety standpoint there were a few projects completed this year: the worn-out tile in the main corridor was replaced with carpet in July; the grease traps were replaced in the kitchen. Additionally bollards were installed at the front entrance and security cameras were installed at 5 locations in and around the building. These were done in order to address some of the security needs pointed out in the school Security Assessment completed in May, 2015.

The Board would also like to thank all of the individuals who work at the school for their professionalism, their dedication and caring that help make the Washington Elementary School so successful.

We are pleased to report that our enrollment has grown this year to 60 students – kindergarten through grade 5. We feel that this is a testament to the outstanding education that our students receive.

The Board continues to strive to be fiscally responsible, as well as maintaining educational excellence and maintaining the building and grounds.

It is our desire that the citizens of Washington know that we appreciate their continued support.

Respectfully submitted,

Washington School Board

Kathy Atkins, Karen Belanger, Gayle Terani, June Manning, Linda Musmanno





**Annual Report
Superintendent of Schools
2014-2015**

I am pleased to report that 2014-2015 was a wonderful year for the Washington and Hillsboro-Deering Schools.

When you walk the halls of our schools you can't help but feel the positive energy around teaching and learning that is so evident in our students and staff. We are very fortunate to have a strong administrative team. Their priority of continuing the progress we have been experiencing in our schools is exemplary. We have focused on implementing the Common Core State Standards and preparing our staff and students for the new Smarter Balanced assessment which replaced the NECAP in the 2014-2015 school year. We will analyze those results when they come in and use the data to make decisions about our instructional practices and curriculum.

Our goal to prepare the children for the 21st century workforce will continue to guide us in the upcoming school years. I am confident that we will persevere and provide our next generation with the skills that they need to be life-long learners and contributing members of our community. It is imperative that we prepare our students for the world that they will be living in.

I would like to thank all the community members for their continued support in providing a strong educational experience for all of our children.

It is an honor and a privilege to serve as your Superintendent!

Respectfully submitted,

Robert A. Hassett, M.Ed.
Superintendent of Schools

BUSINESS ADMINISTRATOR'S REPORT

We thank the Washington voters for supporting the school budget. The trust funds for maintenance and special education were funded once again. In case of an unavoidable expense, these funds allow us to respond to the issue without deficit spending or a dramatic increase in the next year's budget. These trusts are funded only by reserves from end-of year balances. It's important to continue this practice for the sound fiscal management of the school district.

The FY 2014 – 2015 budget was adequate for the school's operation and a surplus of \$90,630 was returned to the taxpayers. The major areas for savings were staffing and tuition costs.

We continue to maintain our school and grounds making improvements as funds allow. Bus routes are fine-tuned annually depending on the location of our students. We have a cooperative relationship with our provider, First Student.

As the school district officer in charge of business operations, student transportation, food service and facilities, I want to sincerely thank the community for its support of the Washington School District, its students and staff and the School Administration Unit staff who serve your school district.

Respectfully submitted,

Jean E. Mogan, MBA
Business Administrator



**Annual Report
Assistant Superintendent**

Student Support Services continued to strive to meet the needs of our students. SAU #34 remains committed to ensuring that all students are able to access the general education setting and curriculum and apply a variety of technological and instructional methods to accomplish this goal. School personnel have and will continue to collaborate with families and outside agencies to support the needs of the students in a variety of ways.

Home School: Parents have the right to choose home education as an alternative to having their son(s) and/or daughter(s) attend a public or private school in accordance with Chapter 279:2, laws of 1990. As of October 1, 2014, 79 students were reported to the SAU as being home schooled. Sixty-eight of these students resided in Hillsboro-Deering, 6 students in Washington and 5 students in Windsor. These numbers reflect an increase of 9 students being home educated over the previous school year.

English for Speakers of Other Languages, (ESOL): As stated on the New Hampshire Department of Education's website, "The mission of the ESOL Program is to ensure that all English Language Learners in New Hampshire are given an equitable, appropriate, and academically challenging education." SAU #34 began the year with 8 students who met the eligibility criteria to receive ESOL support: 0 students at WES, 2 students at HDES, 3 students at HDMS and 3 students at HDHS. Students receiving ESOL support services spoke Spanish, French Creole, Mandarin Chinese or Greek.

Section 504: The Rehabilitation Act of 1973, Section 504, is a civil rights law that prohibits discrimination against individuals with disabilities. As of October 1, 2014, sixty-three students in SAU #34 were identified under Section 504 and received accommodations to meet their individual needs to the same extent as the needs of students without disabilities: 2 students at WES, 15 students at HDES, 22 students at HDMS and 24 students at HDHS.

Nursing: The nursing team actively collaborated with community resources to promote health and safety of students, supporting academic success. The nursing team worked with Granite United Way and Maxim to provide students and faculty with an on-campus flu vaccine clinic. Access to the flu vaccine increases the overall health and welfare of our students and faculty by decreasing the incidence of absences due to flu during the flu season.

The nursing team continued to support the Saving Peoples Smiles Mobile Dental Van which provided free dental care to students in the schools who do not have an established dentist. Students were able to participate in 2 visits this year as part of the 6 month dental prevention plan. Students who participated in the program had access to comprehensive exams, cleanings, x-rays, fillings and extractions.

The nursing team worked with the Hillsboro Chapter of Lions Club to bring Operation Kid-Sight Vision Screening program to the schools. Vision screens were provided as a free service.

The nursing team established a professional relationship with Convenient MD. Convenient MD provided the school with 200 free sport physical vouchers, free generic epi-pens, and a free

continuing education class for the nurses.

Counseling and Therapeutic Support: During the 14-15 school year, SAU #34 continued to see an increase in demand for services especially the need for mental health assistance. Brookside Counseling provided counseling services to students at WES. Hillsboro-Deering continued their partnership with Brookside Counseling and Riverbend Community Mental Health in an effort to improve the availability of mental health therapeutic supports to children and families in the Hillsboro-Deering area. Licensed clinical social workers provided individual therapy to students during the school day, as well as consultation with teachers regarding emotional and behavioral needs. This school-based mental health program supported students who demonstrated significant emotional, social and/or behavioral challenges at home, in school and in the community.

During the summer, the Mental Health Task Force Committee met and reviewed procedures and practices used in addressing the mental health needs of the students. Revisions were made to procedures and forms which were then reviewed with staff upon return to school in the fall.

Special Education: Throughout the course of the school year, special education staff prepared for students to participate in the new state assessment, Smarter Balanced Assessment Consortium (SBAC) or for students with significant cognitive disabilities, the Dynamic Learning Maps Alternative Assessment (DLM). Staff participated in numerous professional development opportunities in order to become qualified administrators of the assessments, ensured appropriate accommodations were in place and provided practice tests to familiarize students with the technology use required during the assessment. Both assessment instruments were used to measure what students know and can do.

The District continued to maximize resources and utilized extended year in order to support the needs of students with educational disabilities in the least restrictive environment. Staff continued to participate in a variety of professional development opportunities to increase their knowledge with the most effective data-driven, research based practices in order to monitor student needs and design and implement interventions to meet them.

A total of 255 students were identified with educational disabilities which represents 20% of the SAU's School District's school-aged population: 10% at WES (5 students), 21% at HDES (109 students), 21% at HDMS (59 students) and 20% at HDHS (82 students). As of October 1, 2014, 10 students with educational disabilities were placed in out-of-district programs, 6 placed by the court/DCYF and 3 students placed by the District.

McKinney-Vento Act: The McKinney-Vento Homeless Assistance Act provides certain rights and protections for families experiencing homelessness. Public school districts must ensure that students who are homeless have equal access to the same free, appropriate public education as other youth and through the combination of Title I and District funds, students who were homeless received access to tutoring, enrichment activities, summer programming, transportation, home visits and school and health supplies. Assistance was provided to connect families with local, state and community associations to aid in the well-being of their children.

The number of students residing in homeless environments in SAU #34 during the 2014-2015

school year was as follows: 0 students at WES, 25 students at HDES, 9 students at HDMS and 15 students at HDHS for a total of 49 students from 31 families. These numbers reflect an increase of 8 students and 4 families who accessed this service. As part of the McKinney-Vento Federal law, Title I must service homeless and migrant youth and families.

Title I: WES is a Title I Targeted Assistance School and receives federal funds for students at risk of failure. This designation was determined by the free and reduced lunch count which was approximately 43% in 2014-2015. These funds support an instructional salary, supplies for Title I students, professional development, and parent education/involvement activities. The 2014-2015 Title I allocation was \$19,767.00.

As a Title I Targeted Assistance School, allocation of funds must be dedicated solely to assisting students who are struggling and who may be at risk of failure. The intent of Title I programs is to provide students at risk of failure additional time with research-based targeted instruction in the areas of math and reading to increase their opportunity to become successful learners at their grade level. Title I programs do not supplant regular classroom instruction; they supplement the instruction.

Students in grades K-5 were selected for the Title I program based on data from multiple assessments, teacher observation, and parent permission. Following the requirements of the No Child Left Behind Act, Title I supplementary instruction was provided by highly qualified staff at WES. Nine students in grades K-5 received services in 2014-2015. A new part time position was created that enabled pre-school programming to be offered to Washington's three and four year old population. This is offered 3 mornings a week and 11 students attended regularly. This program was designed to incorporate the six key indicators that are outlined in "The New Hampshire Kindergarten Readiness Indicators". Additionally, eleven students took advantage of supplemental Title I services during the summer.

The Title I Targeted Program successfully accelerated student learning for all of the students participating. Having met their established goals, two students were exited in the spring. End-of-year assessments revealed that 87% of students receiving Title I support during the 2014-2015 school year met the majority of their established goals. Every preschooler demonstrated growth across all areas.

Federal Grants: Over \$45,000.00 in federal grant funding was awarded to the Washington School District. Each grant had very specific criteria regarding allocation of funds and required an approval process from the Superintendent to the New Hampshire Department of Education. Funds were used to hire staff and purchase books, materials, supplies, technology and equipment. Professional development opportunities were funded in order to support programming and services at WES.

For additional information regarding the above material, please visit the Hillsboro-Deering School District website at www.hdsd.org.

Respectfully submitted,
Patricia Parenteau
Assistant Superintendent

Annual Report
Director of Curriculum, Instruction and Assessment

This report is prepared by Lisa Witte, Director of Curriculum, Instruction, and Assessment for the 2014-15 school year, and submitted by Kevin Johnson, Director of Curriculum, Instruction, and Assessment starting July 1, 2015.

Curriculum and Instruction

The Washington School District worked collaboratively with the Hillsboro-Deering School District to further understanding of the first year SBAC results. Professional development on instructional strategies that utilize multiple types of data have been ongoing and provided by outside and in-house experts. Curriculum review in all content areas is continually reviewed by K-12 teams and WES staff.

Assessment

Washington Elementary School worked on implementing a Response to Instruction (RtI) model during the 2014-15 school year. AIMSweb (a program that is used to closely monitor student progress in identified focus areas) is a key component of the RtI model, providing up-to-date snapshots of student progress so that programs can be modified as soon as possible. The STAR assessment is also being utilized as it gives specific information in math and reading that is aligned to the SBAC assessment. This results in more accurate information about where a student is and what their needs are moving forward.

I enjoyed being a part of the educational team at the Washington School District. Thanks to the dedication and effort of all of our educators, we are able to provide outstanding academic opportunities for all students.

Respectfully Submitted,

Kevin Johnson, Ed.D.
Director of Curriculum, Instruction, and Assessment



Washington Elementary School Leadership Team Report

2015 has been a year of growth and change for our school community. In June, we received the news that Dr. Johnson accepted a part-time curriculum and assessment position at the SAU. Jane Johnson and I are enthusiastic about reinstituting the leadership team model at WES, with Dr. Johnson continuing as consulting principal. In addition, Kelli Aldrich took on the role of coordinating curriculum, assessment, and professional development at WES.

During the past two years we have seen a steady increase in our student population. We have welcomed 18 new students to our school this year. Our current enrollment is 59 students. This represents a 30% increase in our population.

In 2015, our preschool expanded to three mornings per week. Three and four year-olds are invited to attend this program, which is funded by Title I funds. We welcome Kathleen Brown as our new preschool teacher this year.

We would also like to welcome Camille Gibson and Linda Kress to our WES community. Camille, a Washington resident, is a paraeducator in the K/1 classroom, and she also helps out in the school library. Linda Kress is our new speech pathologist.

This year, our students in grades 3-5 took the Smarter Balanced Assessment for the first time. This assessment, aligned to the Common Core State Standards, replaces the former NECAP assessment in math and English language arts. This is a computerized adaptive test that provides teachers and parents with data to gauge student achievement. In addition to this assessment, all students in grades K-5 now take STAR Math and STAR Reading or STAR Early Literacy assessments several times per year. This data is available immediately and allows teachers many ways to monitor student progress on the Common Core standards.

Our community is much larger than the school itself. The Washington community continues to enrich and support us in many ways. Community members volunteered to be writing buddies and Grandpals again this year, they sponsored Student of the Month lunches with Chief Marshall, and our "library ladies" came in monthly to read stories to our students and bring them birthday books.

Just as our community members devote their time to helping us, we try to instill in our students the value of helping others. This year, the Student Council had a Goods and Services Fair to raise money for less fortunate children in Mexico. We raised over \$300 for this cause.

The Duncan-Jenkins Trust provided amazing enrichment opportunities for the children of Washington this year including Children's Stage Adventures, NHDI dance residency, a trip to the Franklin Park Zoo, the Bookmobile, storyteller Simon Brooks, and No Strings Marionettes. We thank the Trust for their generous support.

This year, we are also focusing on our students' teamwork, problem solving, and perseverance.

One way we are doing this is through our school-wide theme, “Working Together to Build a Strong Year.” Our students use Lego education kits and work together on cross-age teams to learn about simple machines and complete S.T.E.M. (Science, technology, engineering and math) challenges.

We are so fortunate to have such a hard-working and dedicated staff at WES. We thank them and all those who take such an active role in the education of our students. We appreciate your commitment and ongoing support.

Respectfully submitted,

Jane Johnson and Tamara Webber
WES Leadership Team

Hillsboro-Deering Middle School Annual Report

Adjustments to the schedule were implemented for the 2014-2015 school year. A fifth core subject, Writing, was added to the student schedule in the 6th and 8th grades for the 2014-2015 school year. To stay within the budget and allocated FTE's, only two grades added a writing teacher. To ensure that all grade levels followed a five core subject schedule, STEM was added to the 7th grade as a core subject. Previously, STEM had been part of the Unified Arts (UA). The UA schedule included four subjects, art, health, music and physical education. Students rotated quarterly within the UA schedule for the school year. The staff spent a great deal of time during the school year working on the student Prep (RTI) period. This was a daily 50 minute block of time providing students with support in math and reading and enrichment opportunities. Enrollment for the school year averaged 278 students.

The district assessment, NWEA Map Testing, demonstrated strong growth in several areas. Reading scores showed the highest improvement from the fall to spring testing window. Math scores improved but were still lower than the grade level NWEA Map Normative Data. 6th grade reading scores increased by 5.2 RITs from the fall to spring testing periods. This growth was slightly better than the NWEA normative data. 7th grade reading scores improved by 3.6 RITs, which again was slightly better than the normative data. 8th grade reading scores improved by 5.9 RITs, which was almost double the expected growth according to NWEA data. Each grade level reading average was at the expected grade level average base don NWEA Normative data.

6th grade NWEA math scores improved by 5.2 RITs. The grade level average for the end of the year was 5 RITs below the expected NWEA data. 7th grade NWEA math scores showed the greatest improvement, 7.5 RITs from the fall to spring testing window. The grade level average was only 3.5 RITs below the expected NWEA data. 8th grade NWEA math scores improved by 5.6 RITs and were 3.6 RITs below the expected NWEA data. Overall, math scores demonstrated good improvement from the fall to spring testing window. The achievement gap between the HDMS grade level averages and the NWEA Normative data is getting smaller

based on all the hard work of the teaching staff and students.

The 2014-2015 school year brought a new state assessment for New Hampshire public schools. The staff and students spent a great deal of time and effort preparing for the Smarter Balanced Assessments. This state assessment was a new testing format for the students. A great deal of time was spent during Prep (RTI) preparing students for the new testing procedures. The math and ELA departments devoted a great deal of time and energy ensuring that the standards were covered in their core classes and also during the RTI period for intervention. The 6th grade overall math score demonstrated that 33% of these students met or exceeded the state standard. This was 11 percentage points below the state average. 47% of the 6th grade students met or exceeded the state standard. The state average for this grade level was 56.6%. The reading and writing claim scores which are part of the ELA standard, averaged 59.8% and 74.5% respectively. These claim score averages were very close to the state averages. For the 7th grade, 25% of the students met or exceeded the state standard in math. This average was significantly below the state average of 49.9%. 54.7% of the 7th grade class, met or exceeded the state standard for ELA. This state average was 61.95. The reading and writing claim scores were equal to or slightly above the state average with scores of 77.4% and 84.5% respectively. The 8th grade overall math score demonstrated 22.9% of the students meeting or exceeding the state standard as compared to the state average of 43.6%. 47.75 of the 8th grade students met or exceeded the ELA standard as compared to the 57.5% state average. The reading and writing claim scores, 75.6% and 73.2% were very close to the state claim score averages.

Sixty-five of the eighty-nine 8th grade students participated in the class trip to Washington D.C. For many of these students, this is a once in a lifetime experience to visit the sights of Washington D.C. that they have studied in school. Many of these students benefit from scholarships that allow them to experience this outstanding trip. The students and staff are extremely grateful to Duncan Jenkins Trust which provides these scholarship funds.

Destination Imagination is an outstanding after school activity for students to participate in. HDMS sent three teams to the regional competition in Swanzey. One team finished third in it's category and another team finished first which qualified the team for the state competition. This team placed fourth at the state level.

The NHMEA Southwest Music Festival is always a goal for many of the middle school student to qualify for. This year, two chorus students qualified and three band students earned a trip to the festival.

Exploring the history of our community was a theme integrated throughout our 8th grade Social Studies and English Language Arts classes this year. A variety of primary and secondary sources to learn about our past, focusing primarily on Bridge Village or what students today would call downtown Hillsborough. A presentation on the restored painted curtains at the Hillsborough Heritage Museum inspired a semester-long integrated service learning project which had the students painting their own curtain which they presented to the Heritage Museum.

Washington School District 2015 Annual Report

The 2014-2015 school witnessed many successes for HDMS students both in and out of the classroom. The staff looks forward to working with the students and their families to create more successful opportunities in the future.

Respectfully submitted,

Marc Peterson
Hillsboro-Deering Middle School Principal

Hillsboro-Deering High School Annual Report

The New England Association of Schools and Colleges (NEAS&C) completed the decennial evaluation of Hillsboro-Deering High School Sunday, April 12, 2015 through Wednesday, April 15, 2015. The sixteen members of the visiting team were comprised of teachers and principals from the New England Region. We are proud to announce that Hillsboro-Deering High School has received the letter from the Committee on Public Secondary Schools awarding the high school continued accreditation with the New England Association of Schools and Colleges. The next step leading towards the 2025 decennial evaluation is the two year report due on October 1, 2017. We extend our heartfelt thank you to all parents and community members that volunteered to serve on the NEAS&C Committees for making the evaluation of Hillsboro-Deering High School a great success.

Student Voice officers attended the New Hampshire Association of School Councils Fall Conference at Waterville Valley November 7th and 8th, 2014. The theme of the conference was "Making Dreams Come True." Youth motivational speaker Ted Wiese led two large group workshops emphasizing realizing one's potential and leading impactful lives. Student Voice members also had the opportunity to interact with student council members from around the state and participate in a series of student-led workshops focused on leadership and team-building.

The HDHS Art Department developed a Graphic Design course to further imbed 21st century learning skills within the arts. Students will be creating designs utilizing problem solving, inquiry, critical thinking, and visual communication skills through the application of the Adobe Suite. Look for student artwork displayed on the school's web gallery www.Artsonia.com and on the HDHS web page.

In the Spring of 2015 the International Trip brought our students and staff to Spain for a nine day cultural adventure. During the nine days participants had the opportunity to visit several major cities such as Madrid, Seville, and Granada; which are all rich in cultural experiences and history. In Madrid the group toured The Royal Palace, The Prado Museum and Parque del Buen Retiro. In Seville, the group climbed La Giralda, which is the bell tower in the city's cathedral, to see a complete view of the entire city of Seville. One of the most exciting parts of

the trip was a traditional Flamenco show in Granada in which staff and students became part of the show! The trip finished with a day trip to Morocco to see the famous open air markets. The trip was an amazing experience for all and an opportunity for the participants to witness the cultural, linguistic, and historical abundance of Spain.

H-DHS DECA placed 8th in the world DECA Virtual Business Restaurant Management Team. The Hillsboro-Deering High School DECA team qualified for and attended the Orlando International Career Development Conference, earning 8th Place in the world in DECA Virtual Business Sports Management. The HD DECA group competed at NH DECA States last February and earned 1st Place in NH and competed at the International DECA Conference in Financial Literacy.

The New Hampshire Interscholastic Athletic Association (NHIAA) honored senior scholar athletes from across the state in Concord, on Monday, February 2, 2015. The NHIAA recognizes seniors who maintain a 3.5 cumulative GPA and participate in at least two varsity sports during their senior year. Ten Hillsboro-Deering High School students were honored on this day: Sam Atkins, Kymberlee Bergstresser, Jessica Caldwell, Michael Cordeiro, Brianna Dumeny, Seth Johnson, Paul Mooney, Carynn Rheume, Andrew Roberge, Alec Zullo.

Three members of the Live Poets Society attended the Champlain College Young Writers Conference in May 2015. This was a residential writer's weekend for high school students on the hillside campus of Burlington's Champlain College. Students participated in over ten hours of intensive fiction, poetry, song writing, creative nonfiction, dramatic writing and environmental writing workshops.

Professional development has played a critical role in the improvements made at Hillsboro-Deering High School. Teachers and administration have worked tirelessly to improve curriculum, instruction and assessment practices based on current research and best practices, leading to increased student achievement. Aligning curriculum to the Common Core Standards, developing learning targets to measure what students know and are able to do, and continuing the development of common, rigorous assessments are and will continue to be the focus of our professional development plan.

We are excited to continue our work together improving and refining Hillsboro-Deering High School into a twenty-first century learning community that provides high quality, personalized education for every student.

H-DHS commits to building community,
providing a personalized education,
encouraging continual progress, and inspiring
purposeful lives.

Respectfully Submitted,

James O'Rourke
Hillsboro-Deering High School Principal

Duncan-Jenkins Trust

A Charitable Trust Supporting Teachers and Students
Of the Washington and Hillsboro-Deering School Districts

PO Box 13
Hillsborough, N.H. 03244
(603)464-5578
Fax (603)464-3269

Grant Committee:

Robert Hassett, Superintendent SAU #34
Richard Pelletier Hillsboro-Deering School Board
Linda Musmanno , Washington School Board
Ronald Jager, Public Member
Grace Jager, Public Member
Douglas S. Hatfield, Trustee

2015 Report of the Trustee

As I'm sure many of you are aware, the 2015 economy was not as robust as 2014. The stock market was down; however, because we distribute funds based on a 3-year rolling average of the value of the Trust, the 2016 distributions should be very similar to the distributions of 2015. Subject to final calculations, we hope to be able to distribute close to \$350,000 in 2016. Of this, about \$125,000 will go to scholarships, \$175,000 to teacher enrichment programs, and about \$85,000 to student programs. (This does not add up to the amount anticipated for 2016, because we have some \$35,000 in teacher enrichment funds left over from 2015.) As I've said many times before, I am convinced that the availability of resources from the Duncan-Jenkins Trust for our teachers, students, and staff increases the quality of education for the students of the Washington and Hillsboro-Deering School Districts. This is an asset that enriches not only the quality of education in our school district, but also the quality of life in our communities. I am especially proud to be associated with such a unique program.

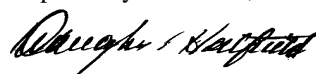
For 2015, we granted \$81,913 for student enrichment programs. The richness of these programs included an 8th Grade Trip to Washington, D.C., "Click, Clack, Moo" at the Capitol Center for the Arts, No Strings Marionettes at Washington Elementary School, a trip to the top of Mt. Washington on the Cog Railway, a trip to the Museum of Science in Boston, and a NH Dance Institute Residency.

We granted \$136,543 for teacher enrichment programs which provided opportunities for teachers to travel during the summer to enhance their skills through workshops and training sessions and to participate in special programs related to their teaching. As a result of these grants, teachers were able to attend a variety of professional conferences throughout the United States, and to travel to Ireland, England, Italy, Nova Scotia, Montreal, Australia, and Scotland.

And finally, our scholarship program in 2015 awarded \$128,000 in scholarships to a total of 51 students. Two students received the Sally Jenkins Distinguished Scholar Award, and the single largest scholarship awarded by the Duncan-Jenkins Trust was \$8,000.

I'm very privileged to work with a dedicated, conscientious and hardworking Grant Committee who literally spend hours reviewing applications and evaluating grant requests. This Committee consists of Grace Jager and Ron Jager, at-large members from Washington, Linda Musmanno representing the Washington School Board, Rick Pelletier representing the Hillsboro-Deering School Board, Robert Hassett, Superintendent of Schools and myself as Trustee. Special thanks to these Committee members.

Respectfully submitted,



Douglas S. Hatfield
Trustee of the Duncan Jenkins Trust

**THE STATE OF NEW HAMPSHIRE
WASHINGTON SCHOOL DISTRICT
SCHOOL WARRANT**

To the inhabitants of the School District in the town of Washington qualified to vote in District affairs:

You are hereby notified to meet at the Washington Elementary School in said District on Saturday the 5th day of March 2016 at two o'clock in the afternoon to act upon the following:

Article 1. To choose by nonpartisan ballot the following School District officials:

- Two School Board Members for 3-year terms
- One Moderator for a 1-year term
- One Clerk for a 1-year term
- One Treasurer for a 1-year term

Article 2. To hear the reports of agents, auditors and committees or officers chosen and to pass any vote relating thereto? *Recommended by School Board*

Article 3. To determine and appoint the salaries of the School Board, and fix the compensation for any other officers or agents of the District as follows:

School Board Chair:	\$750
School Board Members:	\$500
School District Clerk:	\$75
School District Treasurer:	\$500
School District Moderator:	\$100

Recommended by School Board

Article 4. To see if the Washington School District will vote to raise and appropriate for the support of schools, the payment of salaries of School District employees, and for the payment of statutory obligations of the District, the sum of \$2,324,548 (two million, three hundred twenty-four thousand, five hundred forty-eight dollars) or take any other action in relation thereto? *(This article does not include the budget of the School Administrative Unit.) Recommended by School Board*

Article 5. Shall the voters of the Washington School District adopt a school administrative unit budget of \$1,020,109 (one million, twenty thousand, one hundred nine dollars) for the forthcoming fiscal year in which \$135,174 (one hundred thirty five thousand, one hundred seventy four dollars) is assigned to the school budget of this school district? This year's adjusted budget of \$1,017,045 (one million, seventeen thousand, forty five dollars) for the forthcoming fiscal year in which \$134,742 (one hundred thirty four thousand, seven hundred forty two dollars) is assigned to the school budget of this school district, will be adopted if the article does not receive a majority vote of all the school district voters voting in this school administrative unit. *Recommended by School Board*

Article 6. To see if the Washington School District will raise and appropriate funds from State

and Federal aid for the support of school projects as follows: for food service, \$25,000 (twenty-five thousand dollars) and for Federal and State projects, \$50,000 (fifty thousand dollars)? These appropriations have offsetting revenues from school lunch sales and state and federal revenues and do not affect the tax rate. *Recommended by School Board*

Article 7. To see if the school district will vote to raise and appropriate the sum of \$10,000 (ten thousand dollars) to add to the expendable trust fund created with the March 2005 Annual Meeting vote, for the purpose of paying for any unanticipated Special Education out-of-district tuition, related transportation and special therapy services and authorize the use of the sum of up to \$10,000 (ten thousand dollars) from the year end undesignated fund balance (surplus) available on July 1 of 2016, if any, toward this purpose. *Recommended by School Board*

Article 8. To see if the school district will vote to raise and appropriate the sum of \$10,000 (ten thousand dollars) to add to the expendable trust fund created with the March 2005 Annual Meeting vote, for the purpose of maintaining and repairing school buildings and authorize the use of the sum of up to \$10,000 (ten thousand dollars) from the year end undesignated fund balance (surplus) available on July 1 of 2016, if any, toward this purpose. *Recommended by School Board*

Article 9. To see if the town will vote to raise and appropriate the sum of \$120,000 for replacing the roof of the Elementary School and authorize the withdrawal of \$70,000 from the Maintenance Expendable Trust created for that purpose. The balance of \$50,000 is to come from general taxation. Recommendation by the School Board. (Majority vote required) *Recommended by School Board*

Article 10. To see if the school district will vote to authorize, indefinitely until rescinded, to retain year-end unassigned general funds in an amount not to exceed, in any fiscal year, 2.5% of the current fiscal year's net assessment, in accordance with RSA 198:4-b, II. The retained fund balance may only be used to reduce the tax rate or as a revenue source for emergency expenditures and over expenditures under RSA 32:11. This retained fund balance is not cumulative. (Majority vote required) *Recommended by School Board*

Article 10. To transact any other business that may legally come before said meeting.

Given under our hands at said Washington on this 9th day of February 2016.

LINDA MUSMANNO, CHAIR
JUNE MANNING
GAYLE TERANI
KATHY ATKINS
KAREN BELANGER
School Board

**WASHINGTON SCHOOL DISTRICT
PROPOSED 2016-2017 GENERAL FUND BUDGET**

REVENUES	FY 2015 Actual	FY 2016 Budget	FY 2017 Proposed	AMT DIFF
Local Tax Revenue	1,805,956	1,894,205	1,800,852	(93,354)
Statewide Property Tax	516,292	574,370	574,370	-
State Adequacy Grant	44,208	32,340	32,000	(340)
State Building Aid	18,188	18,000	18,000	-
Catastrophic Aid	-	-	-	-
Medicaid Revenue	5,385	2,500	2,500	-
Tuition Revenue	17,365	15,000	32,000	17,000
Miscellaneous Income	-	-	-	-
Grand Total	2,407,394	2,536,415	2,459,722	(76,694)

EXPENSES	FY 2015 Actual	FY 2016 Budget	FY 2017 Proposed	AMT DIFF
Regular Education				
Salaries	204,109	209,860	248,350	38,490
Support Staff Wages	32,008	43,488	37,015	-6,474
Substitutes	4,756	2,000	2,000	-
Health Insurance	24,079	26,835	32,374	5,539
Dental Insurance	2,390	2,390	2,390	-
Life Insurance	396	396	396	-
Long Term Disability	482	475	475	-
FICA	18,210	19,534	21,983	2,449
NH Retirement	22,035	26,085	32,049	5,964
Repairs & Maintenance	8,473	3,750	3,750	-
Postage	63	350	350	-
Tuition - ES	0	-	-	-
Tuition - MS	565,880	557,884	615,747	57,863
Tuition - HS	790,489	898,168	711,103	-187,065
Supplies	7,210	8,600	8,600	-
Books	11,274	7,200	7,200	-
Equipment	2,949	2,850	2,850	-
Dues & Fees	160	735	735	-
Academic Excellence	930	1,450	1,450	-
Regular Education Total	1,695,893	1,812,051	1,728,817	-83,234
Special Education				
Salaries	62,599	63,850	32,244	-31,606
Support Staff Wages	8,144	-	7,038	7,038
Summer School	1,400	2,000	2,000	-
Health Insurance	7,022	5,750	6,000	250
Dental Insurance	132	1,022	1,022	-
Life Insurance	194	132	132	-
Long Term Disability	0	160	160	-
FICA	5,978	5,038	3,005	-2,032
NH Retirement	9,062	10,005	5,053	-4,952
Professional Services	0	500	500	-
Supplies	493	500	500	-
Special Education Total	95,023	88,957	57,654	-31,303

Washington School District 2015 Annual Report

EXPENSES	FY 2015 Actual	FY 2016 Budget	FY 2017 Proposed	AMT DIFF
Guidance				
DARE PROGRAM	0	250	250	-
SUPPLIES	0	800	800	-
Guidance Total	0	1,050	1,050	-
Nursing Services				
Salaries	20,437	20,316	20,518	202
Health Insurance	3,000	2,875	3,000	125
Dental Insurance	264	264	264	-
Life Insurance	26	26	26	-
Long Term Disability	64	62	62	-
FICA	1,746	1,554	1,570	15
Professional Services	0	400	400	-
Supplies	288	275	275	-
Nursing Services Total	25,826	25,772	26,115	343
Psychological Services				
Professional Services	8,300	8,000	8,000	-
Travel	193	450	450	-
Psychological Services Total	8,493	8,450	8,450	-
Speech/Language Services				
Professional Services	5,850	10,000	10,000	-
Supplies	572	650	650	-
Speech/Language Services Total	6,422	10,650	10,650	-
Occ & Phys Therapy				
Professional Services	9,377	17,000	17,000	-
Supplies	277	450	450	-
Occ & Phys Therapy Total	9,654	17,450	17,450	-
Staff Development				
Training/Tuition Reimb	11,354	9,400	12,760	3,360
Books	71	250	250	-
Staff Development Total	11,425	9,650	13,010	3,360
School Library and Technology				
Support Staff Wages	1,208	1,167	789	-378
FICA	92	89	60	-29
Books	177	800	800	-
Contract Professional Service			3,000	3,000
School Library and Technology Total	1,477	2,056	4,649	2,593

Washington School District 2015 Annual Report

EXPENSES	FY 2015 Actual	FY 2016 Budget	FY 2017 Proposed	AMT DIFF
School Board				
Salaries	2,750	2,750	2,750	-
FICA	211	211	211	-
Dues & Fees	4,069	4,000	4,000	-
Miscellaneous	1,350	2,250	2,250	-
School Board Total	8,380	9,211	9,211	-
District Secy/Clerk				
Professional Services	500	75	75	-
District Secy/Clerk Total	500	75	75	-
District Treasurer				
Salaries	500	500	500	-
FICA	38	38	38	-
Supplies	519	450	450	-
District Treasurer Total	1,057	988	988	-
Election Services				
Professional Services	0	500	500	-
Printing	84	150	150	-
Election Services Total	84	650	650	-
Administration				
Unemployment Compensation	1,414	1,340	1,400	60
Workers Compensation	4,377	4,075	4,075	-
Employee Background Checks	119	200	200	-
SAU Services	131,664	136,893	135,174	-1,719
Legal And Audit Fees	8,842	11,592	11,592	-
Advertising	1,561	1,000	1,000	-
Administration Total	147,977	155,100	153,441	-1,659
Office Of Principal				
Leadership Stipends	9,000	9,000	40,000	31,000
Office Admin Asst Salary	20,422	20,316	20,518	202
Principal 's Office Salary	40,600	41,412	3,333	-38,079
Health Insurance	3,000	2,875	3,000	125
Dental Insurance	264	264	264	-
Life Insurance	158	26	26	-
Long Term Disability	189	117	117	-
Leadership Stipends FICA	681	3,857	3,315	-542
Office Admin Asst FICA	4,811	1,554	1,570	15
Leadership Stipends NHRS	850	940	940	-
Office Admin Asst NHRS	-	-	-	-
Supplies	900	900	900	-
Office Of Principal Total	80,875	81,261	73,983	-7,278

Washington School District 2015 Annual Report

EXPENSES	FY 2015 Actual	FY 2016 Budget	FY 2017 Proposed	AMT DIFF
Maintenance				
Salaries	35,387	35,882	35,818	-64
Health Insurance	5,500	5,750	6,000	250
Dental Insurance	528	528	528	0
Life Insurance	53	53	53	0
Long Term Disability	106	105	105	0
FICA	3,022	3,110	3,199	89
NH Retirement	3,758	4,008	4,001	-7
Services - Trash, Water Testing	4,109	4,175	4,175	-
Winter Maintenance	0	1,500	1,500	-
Repairs & Maintenance	22,392	19,268	19,268	-
Property & Liability Insurance	3,354	3,152	3,515	363
Telephone	614	2,500	2,500	-
Supplies	3,768	4,750	4,750	-
Electricity	20,391	19,600	19,600	-
Gas Utility	19,079	24,135	24,135	-
Equipment	0	500	500	-
Maintenance Total	122,061	129,016	129,647	631
Transportation				
Transportation To & From School	97,520	101,000	139,201	38,201
Special Ed Transportation	-	-	-	-
Field Trips	1,644	3,000	4,000	1,000
Transportation Total	99,164	104,000	143,201	39,201
Debt & Fund Transfers				
Debt Principal	70,000	70,000	70,000	-
Debt Interest	5,310	2,028	1,680	-348
Transfer To Food Service Fund	9,000	8,000	9,000	1,000
Debt & Fund Transfers Total	84,310	80,028	80,680	652
Grand Total	2,398,621	2,536,415	2,459,722	-76,694

*Includes Proposed SAU Budget

**WASHINGTON SCHOOL DISTRICT
FY 2016-2017 Proposed Food Service Budget**

REVENUES	FY 2015 Received	FY 2016 Estimated	FY 2017 Proposed	AMT DIFF
Café Sales	7,871	13,390	11,000	-2,390
Federal & State Revenues	15,617	10,979	13,170	2,191
Transfer from General Fund	9,000	9,000	9,000	-
Total Revenue	32,488	32,369	33,170	-199
EXPENSES	FY 2015 Expended	FY 2016 Budget	FY 2017 Proposed	AMT DIFF
Wages	16,502	17,268	17,250	-18
FICA	1,271	1,320	1,320	0
Repairs & Maintenance	0	515	500	-15
Supplies	0	824	800	-24
Food & Milk	15,341	12,103	12,000	-103
Equipment	0	1,339	1,300	-39
Total Expenses	33,114	33,369	33,170	-199

Washington School District 2015 Annual Report

WASHINGTON SCHOOL DISTRICT TEACHER SALARY SCHEDULE FULL and PART-TIME Teachers 2016-2017				
STEP	Bachelor's	B+15 Credits	Master's	M+20 Credits
1	\$ 34,218.64	\$ 37,131.43	\$ 40,279.93	\$ 41,951.24
2	\$ 35,585.98	\$ 38,617.16	\$ 41,880.85	\$ 43,628.95
3	\$ 37,009.84	\$ 40,161.54	\$ 43,594.82	\$ 45,373.85
4	\$ 38,490.24	\$ 41,767.79	\$ 45,308.79	\$ 47,189.15
5	\$ 40,030.36	\$ 43,439.10	\$ 47,120.89	\$ 49,076.97
6	\$ 41,631.27	\$ 45,176.54	\$ 49,006.58	\$ 51,039.45
7	\$ 43,296.18	\$ 46,983.30	\$ 50,965.86	\$ 53,080.86
8	\$ 45,028.29	\$ 48,862.59	\$ 53,005.13	\$ 55,204.39
9	\$ 46,829.72	\$ 50,817.61	\$ 55,125.47	\$ 57,413.25
10	\$ 48,702.61	\$ 52,849.41	\$ 57,330.06	\$ 59,709.57
11	\$ 50,651.22	\$ 54,963.35	\$ 59,623.18	\$ 62,097.61
12	\$ 52,676.63	\$ 57,162.61	\$ 62,008.02	\$ 64,581.64
13	\$ 54,784.17	\$ 59,449.33	\$ 64,488.85	\$ 67,164.86

WASHINGTON SCHOOL DISTRICT TEACHER SALARY PROFILE 2016-2017		
No. of Teachers	Annual Salary	FTE
1 @	\$ 53,005.13	1
1 @	\$ 54,784.17	1
2 @	\$ 64,488.85	1
2 @	\$ 10,956.33	0.2
1 @	\$ 21,913.67	0.4

WASHINGTON SCHOOL DISTRICT SUPPORT STAFF SCHEDULE 2016 - 2017		
STEP	B	C
1	\$ 10.95	\$ 12.30
2	\$ 11.26	\$ 12.67
3	\$ 11.61	\$ 13.04
4	\$ 11.95	\$ 13.44
5	\$ 12.31	\$ 13.84
6	\$ 12.68	\$ 14.26
7	\$ 13.07	\$ 14.69
8	\$ 13.45	\$ 15.12
9	\$ 13.99	\$ 15.74
10	\$ 14.55	\$ 16.36
11	\$ 15.13	\$ 17.01
12	\$ 15.75	\$ -
13	\$ 16.37	\$ -

B = Paraeducators
C = Maintenance and Food Service

WASHINGTON SCHOOL DISTRICT SUPPORT STAFF PROFILE 2016- 2017		
No. of Support Staff	Hourly Rate	FTE
1 @	\$ 11.95	0.54
1 @	\$ 15.13	1
1 @	\$ 16.37	1
2 @	\$ 17.01	1
1 @	\$ 32.00	1

Washington School District 2015 Annual Report

WASHINGTON SCHOOL DISTRICT
FY 2016 - 2017 Tuition Estimates

Regular Education Tuition			
	Students	Rate	Budget
Hillsboro Deering Middle School	35	\$ 17,743	\$ 615,747
Hillsboro Deering High School	50	\$ 15,816	\$ 711,103
Total	84		\$ 1,326,850
Special Education Tuition			
	Students	Rate	Budget
Out of District Placement	0	0	0
Total	0		0

SAU #34 PROPOSED BUDGET FY2016-2017

	FY 2015 Actual	FY 2016 Approved	FY 2017 Proposed
100 SUPERINTENDENT SALARY	136,036	139,458	142,944
100 SUPERINTENDENT SALARY (Sale of vacation days)	5,233	5,364	5,498
101 ASSISTANT SUPERINTENDENT SALARY	94,676	96,570	100,441
102 BUSINESS ADMINISTRATOR	84,000	85,680	87,394
103 ADMINISTRATIVE STAFF	125,358	131,216	145,870
104 DIRECTOR OF CURRICULUM, INSTRUCTION & ASSESSMENT	86,353	88,080	50,000
106 BOOKKEEPERS	103,368	110,120	113,424
200 INSURANCE BENEFITS	110,820	111,257	109,621
220 FICA & MEDICARE	47,569	52,016	51,310
230 NH RETIREMENT	65,674	74,717	68,894
240 COURSE REIMBURSEMENT	9,600	10,385	5,000
250 UNEMPLOYMENT COMPENSATION	1,064	1,125	1,125
260 WORKER COMP INSURANCE	3,736	4,100	4,100
290 PROFESSIONAL DEVELOPMENT	9,638	11,200	7,000
330 CONTRACTED PROFESSIONAL SERVICES	23,747	19,165	24,165
380 AUDIT & LEGAL FEES	5,243	8,500	9,000
430 EQUIPMENT REPAIRS & MAINT	150	3,942	5,000
442 COPIER & EQUIPMENT LEASES	3,905	11,500	12,000
450 OFFICE RENTAL	25,000	30,000	35,000
500 POSTAGE, TELEPHONE & OTHER SERVICES	16,419	21,851	20,352
600 SUPPLIES & BOOKS	9,398	8,720	8,720
730 REPLACEMENT EQUIPMENT	11,508	1,050	2,050
810 DUES & FEES	8,744	5,500	6,000
840 SCHOOL BOARD CONTINGENCY	70	200	200
890 ACADEMIC RECOGNITION	3,235	4,300	5,000
TOTAL	\$990,544	\$1,036,017	\$1,020,109

2015-2016 School Enrollment

Washington Elementary School Enrollment - 58
Hillsboro-Deering Middle School Enrollment - 32
Hillsboro-Deering High School Enrollment - 48

Total Washington Students - 138

Kindergarten - 7 students

Anwar, Anderson
Barker, Cody
Bezio, Kayden
Brown, Callum
Chute, Lauren
Davidson, Benjamin
Lunderville, Alexis

Grade One - 12 students

Beckwith, Sothear
Billings, Christian
Camponale, Cameron
Cordereiro, Adrien
Guay, Courtney
Kelley, Nova
Lugo, Caylee
Lunderville, Blake
Thurston, Jaidon
Vaillancourt, Eva

Grade Two - 8 students

Brunt, Kendra
Davidson, Samuel
Kennett, Elijah
Martin, Cameron
Mills, Shayne
Morin, Jackson
Mulliner, Colton
Robinson, James

Grade Three - 8 students

Anwar, Dahlia
Belanger, Joel
Chute, Sydney
Millay, Trinity
Paquette, Madison
Wallwork, Triston

Grade Four - 11 students

Antoniak, John
Burke-Smith, Signy
Davidson, Robert
Denslow, Megan
Denslow, Michael
Grant, Makayla
Guay, Mckenzie
Hurd, Jakeb
Sarapin, Eva
St. Laurent, Amanda
Stephansky, Tyler

Grade Five - 12 students

Barker, James
Belanger, Megan
Cassidy, Griffin
Goodwin, Camden
Kelley, Alfred
Morin, Noah
Putnam, Hannah
Queen, Madeline
Rajaniemi, Kolby
Smith, Corbin
Thurston, Xavier

Per parent request, some student names are not listed.

Grade Six - 11 students

Antoniak, Skyla
Billings, Travis
Butler, Ayden
Denslow, David
Macdonald, Abigail
Millay, Michaela
Mulliner, Jordan
O'Connor, Jared
Queen, Sophia
Riessle, Gracie
Silipigni, Sarah

Grade Seven - 11 students

Atkins, Gracie
Beckwith, Anna-Belle
Brown, Alex
Brunt, Kaylee
Burke-Smith, Tiarnan
Card, Tucker
Guay, Bryce
Hurd, Hanna
Mills, Abbey
Ordway, Lois
Tremaine Dylan

Grade Eight - 10 students

Brown, Anthony
Cilley, Loren
Feighery, Miranda
Gibson, Lily
Guay, Ka-Lynn
Macdonald, Emma
O'Connor, Zachary
Riccio, Melody
Smith, Macayla
Snell, Patrick

Grade Nine - 17 students

Antoniak, Tamyra
Bachand, Jacob
Burke-Smith, Freyjadis
Edberg, Madison
Fauteux, Emilou
Garcia, Makayla
Goodwin, Jocelin
Hurd, Halie
James, Dominic
James, Shane
Luba, Kirsten
Madore, Holly
Mulliner, Morgan
Petrie, Travis
Pion, Kyle
Queen, Rian
Wendt, Ashley

Grade Ten - 9 students

Anwar, Dylan
Carter, Kianna
Cavender, Heather
Cornell, Kenneth
Denslow, Lillian
Garcia, Katrina
Hunt, Harold
Killam, Tiffany
Snair, Kaelyn

Grade Eleven - 10 students

Atkins, Maggie
Ayala, Gabriel
Cullen, Reed
Desmarais, Grant
Dubuque V, William
Madore, Blake
Morrisette, Gina
Rivest, Elizabeth
Tremaine, Hailey
Whiton, Jordan

Grade Twelve - 12 students

Armstrong, Danielle
Bruno, James
Carley, Brighton
Carter Jr., Michael
Cassidy, Gage
Dagesse, Jeffery
Doherty, Brenden
Goodale, Joseph
Kelly, Melissa
Pelchat, Karaline
Petrin, Zachary
Zubrzycki, Dylan

Per parent request, some student names are not listed.

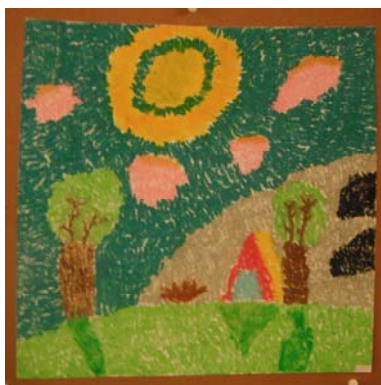


Class of 2015 - 10 students

*Atkins, Samuel
Beckwith, Lucitta
*Cordeiro, Michael
*Dumeny, Brianna
Hafford, Hannah
Goodale, Mikayla
Hofstetter, Jonas
Madore, Hillary
*Parent, Ashley
Stephansky, Travis
Wendt, Brittnee

*indicates NH Scholars graduate

Washington School District 2015 Annual Report



**WASHINGTON SCHOOL DISTRICT
GENERAL FUND**

**School District Treasurer Report
For the Year July 1, 2014 to June 30, 2015**

Cash on Hand July 1, 2014—Audited Balance		<u>\$2,142,097.52</u>
Receipts		
Received from the Town of Washington	1,763,510.26	
State Equitable Aid	44,208.24	
State Building Aid	18,188.24	
Medicaid	6,068.89	
Tuition Revenue	9,068.39	
Federal Food Reimbursement	14,497.92	
Transfer from General Fund to FS	9,000.00	
Cafeteria Sales	7,870.71	
Federal Projects	44,256.20	
Miscellaneous	4,443.06	
	Total Receipts	<u>\$1,921,111.91</u>
Disbursements		
Orders Paid-Accounts Payable	1,253,441.81	
Payroll	600,865.31	
Bank Charges	1,293.20	
	Total Disbursements	<u>\$1,855,600.32</u>
Cash on Hand June 30, 2015	Ending Cash Balance	<u>\$207,609.11</u>

Sandy Eccard
Washington School District Treasurer

WASHINGTON SCHOOL DISTRICT

Balance Sheet - Governmental Funds

As of June 30, 2015

	<u>General</u>	<u>Governmental</u> <u>Funds</u>	<u>Total</u> <u>Governmental</u> <u>Funds</u>
Assets			
Cash and Cash Equivalents	\$207,609		\$207,609
Receivables: Intergovernmental	\$567,034	\$13,429	\$580,463
Inter-Receiveable	\$6,113	\$3,621	\$9,734
Total Assets	<u>\$780,756</u>	<u>\$17,050</u>	<u>\$797,806</u>
Liabilities & Fund Balance			
Accounts Payable	\$640,591	\$2,630	\$643,221
Inter-Fund Payable		\$9,734	\$9,734
Total Liabilities	<u>\$640,591</u>	<u>\$12,364</u>	<u>\$652,955</u>
Fund Balances			
Reserve for Encumbrances	\$9,532		\$9,532
Reserve for Special Purposes	\$20,000	\$4,686	\$24,868
Reserve for Trust Funds			\$0
Unreserved, Undesignated General Fund	\$110,633		\$110,633
Total Fund Balances	<u>\$140,165</u>	<u>\$4,686</u>	<u>\$144,851</u>
Total Liabilities & Fund Balance	<u>\$780,756</u>	<u>\$17,050</u>	<u>\$797,806</u>

WASHINGTON SCHOOL DISTRICT

Trust Funds

Balance as of June 30, 2015

Maintenance Expendable Trust	\$76,357
Special Education Expendable Trust	\$145,844
	<u>\$222,201</u>

s/s Arline France

Bookkeeper, Trustee of the Trust Funds

Washington School District 2015 Annual Report

**WASHINGTON SCHOOL DISTRICT
DETAILED STATEMENT OF EXPENDITURES
SCHOOL YEAR ENDING JUNE 30, 2015**

ACCOUNT	VENDOR	AMOUNT
1100-110-1 Teacher Salary	Chris Albertson	\$10,635.64
	Kelli Aldrich	\$43,852.20
	Jeanine Clarke-Edmunds	\$10,635.64
	Maryjo Debrusk	\$21,271.27
Health Insurance Buy Out	Erika Sullivan	\$6,000.00
	Erika Sullivan	\$49,166.40
	Tamara Webber	\$62,598.38
	Adjustment	(\$51.19)
		<u>\$204,108.34</u>
1100-111-1 Classroom Aides Salaries	Dawn Bilski	\$16,372.14
	Sharon Oliveira	\$15,635.79
		<u>\$32,007.93</u>
1100-120-1 Substitutes		
Maintenance	Yvonne Bachnad	\$443.75
Para	Yvonne Bachnad	\$2,937.50
Teacher	Yvonne Bachnad	\$845.00
	Jeanine Clarke-Edmunds	\$320.00
Library	Paula McKone	\$20.00
Para	Paula McKone	\$125.00
Teacher	Paula McKone	\$65.00
		<u>\$4,756.25</u>
1100-211-1 Health Insurance	LGC	\$24,078.66
1100-212-1 Dental Insurance	LGC	\$2,390.40
1100-213-1 Life Insurance	LGC	\$396.00
1100-214-1 Ltd Insurance	LGC	\$482.32
1100-220-1 FICA	Chris Albertson	\$813.56
	Kelli Aldrich	\$3,293.19
	Yvonne Bachnad	\$323.36
	Dawn Bilski	\$1,252.52
	Jeanine Clarke-Edmunds	\$838.04
	Maryjo Debrusk	\$1,627.29
	Erika Sullivan	\$4,220.17
	Paula McKone	\$16.08
	Tamara Webber	\$4,629.79
	Sharon Oliveira	\$1,196.14
		<u>\$18,210.14</u>
1100-230-1 NH Retirement	Kelli Aldrich	\$6,209.56
	Erika Sullivan	\$6,961.99
	Tamara Webber	\$8,863.92
		<u>\$22,035.47</u>

Washington School District 2015 Annual Report

ACCOUNT	VENDOR	AMOUNT
1100-430-1 Repairs & Maintenance	Quill	\$2,761.46
	Arcomm Communications Corp	\$4,571.38
	Adjustment	\$1,140.00
		<u>\$8,472.84</u>
1100-534-1 Postage	Kristine Swain	\$51.15
	American Express	\$11.26
		<u>\$62.41</u>
1100-561-1 Tuition ES		\$0.00
1100-561-2 Tuition MS	Hillsboro-Deering School District	\$554,303.97
	Keene School District	\$11,576.00
		<u>\$565,879.97</u>
1100-561-3 Tuition HS	Hillsboro-Deering School District	\$777,407.51
	Keene School District	\$13,081.00
		<u>\$790,488.51</u>

Account	Vendor	AMOUNT
1100-610-1 Supplies	Office Depot	\$2,171.18
	JW Pepper	\$109.98
	Michelle Powell	\$38.83
	Kelli Aldrich	\$123.96
	Erika Sullivan	\$352.58
	MaryJo Debrusk	\$45.91
	Tamara Webber	\$346.95
	Chris Albertson	\$168.12
	Plank Road Publishing	\$127.20
	Trend Enterprises, Inc.	\$20.91
	Zoll Medical Corp.	\$105.54
	Kevin Johnson	\$604.95
	Nasco	\$73.92
	Oriental Trading	\$72.38
	Gopher	\$203.22
	Really Good Stuff	\$364.22
	The Page Protector Store	\$115.00
	Treasurer, State of NH	\$106.10
	American Express	\$159.88
	Flaghouse	\$159.44
	Quill	\$1,099.30
	Scholastic	\$195.25
	McIntire Business	\$289.47
	Discount School Supply	\$203.07
	Adjustment	\$3,422.00
		<u>\$10,679.36</u>
	1100-640-1 Books	Glogster
Scholastic Read Counts		\$470.00
American Express		\$1,774.07
Blackboard Inc.		\$1,378.63
Tamara Webber		\$99.95
Arcomm Communications		\$3,120.02

Washington School District 2015 Annual Report

Account	Vendor	AMOUNT
	Quill	\$999.90
	Curriculum Associates	\$45.97
	Edmentum	\$291.00
	IXL	\$249.00
	Brainpop	\$380.00
	Adjustment	\$2,404.67
		<u>\$11,274.21</u>
1100-730-1 Equipment	Office Wonderland	\$379.00
	Arcomm Communications	\$69.05
	Quill	\$2,879.94
	Adjustment	(\$379.00)
		<u>\$2,948.99</u>
1100-810-1 Dues & Fees	NH School Nurses Association	\$100.00
	NH Music Educators Association	\$60.00
		<u>\$160.00</u>
1100-890-1 Academic Excellence	American Express	\$238.77
	School Life	\$146.40
	Kelli Aldrich	\$199.15
	Tamara Webber	\$175.52
	Chris Albertson	\$43.89
	Erika Sullivan	\$100.50
	Really Good Stuff	\$88.20
	Adjustment	(\$62.15)
		<u>\$930.28</u>
1200-110-1 Sped Teacher Salary	Jane Johnson	\$62,598.38
Health Insurance Buy Out	Jane Johnson	\$6,000.00
		<u>\$68,598.38</u>
1200-111-1 Sped Para Salary	Michelle Powell	\$8,143.65
1200-116-1 Summer Program	Kelli Aldrich	\$1,400.00
		<u>\$1,400.00</u>
1200-120-1 SPED Substitutes		\$0.00
1200-211-1 Sped Health Insurance		\$0.00
1200-212-1 SPED Dental Insurance	LGC	\$1,022.04
1200-213-1 Sped Life Insurance	LGC	\$132.00
1200-214-1 Sped Ltd Insurance	LGC	\$193.98
1200-220-1 Sped FICA	Kelli Aldrich	\$107.10
	Jane Johnson	\$5,247.69
	Michelle Powell	\$623.00
		<u>\$5,977.79</u>

Washington School District 2015 Annual Report

Account	Vendor	AMOUNT
1200-230-1 Sped Retirement	Jane Johnson	\$8,863.92
	Kelli Aldrich	\$198.24
		<u>\$9,062.16</u>
1200-330-0 SPED Evaluation Testing		\$0.00
1200-561-1 ES SPED Tuition		\$0.00
1200-561-2 MS SPED Tuition		\$0.00
1200-580-1 SPED Travel		\$0.00
1200-610-1 Sped Supplies	Lakeshore Learning Materials	\$338.57
	Adjustment	\$154.44
		<u>\$493.01</u>
2120-330-1 DARE Program	Creative Product Sourcing - DARE	
		<u>\$0.00</u>
2120-610-1 Supplies	EPS	\$154.44
	Adjustment	(\$154.44)
		<u>\$0.00</u>
2130-110-1 Nurse Salary	Kristine Swain	\$20,437.19
Health Insurance Buy Out	Kristine Swain	\$3,000.00
		<u>\$23,437.19</u>
2130-211-1 Nurse Health Insurance	LGC	\$0.00
2130-212-1 Nurse Dental Insurance	LGC	\$264.20
2130-213-1 Nurse Life Insurance	LGC	\$26.40
2130-214-1 Nurse LTD	LGC	\$63.34
2130-230-1 Nurse FICA	Kristine Swain	\$1,745.95
2130-610-1 Nurse Supplies	School Nurse Supply	\$288.57
2140-330-1 Psych Services	Eric Geaumont	\$8,300.00
2140-580-1 Psych Services Travel	American Express	\$193.27
2150-330-1 Speech Services	Jonathan Clancy	\$5,850.00
		<u>\$5,850.00</u>
2150-610-1 Speech Supplies	Pro-Ed	\$571.95
		<u>\$571.95</u>

Washington School District 2015 Annual Report

Account	Vendor	AMOUNT
2160-330-1 Occ Therapy	Capital Kids OT	\$2,829.66
	Jill Severino	\$413.57
	Karen Cota	\$306.37
	Hillsboro-Deering School District	\$6,716.33
	Adjustment	<u>(\$888.84)</u>
		<u>\$9,377.09</u>
2160-610-1 Occ Therapy Supplies	Amazon	\$277.12
2210-240-1 Tuition Reimbursement	Kristine Swain	\$5,528.55
	NHAHPERD	\$120.00
	American Express	\$75.00
	New England College	\$4,610.00
	JSI Research & Training Inst.	\$70.00
	Dawn Bilski	\$103.12
	Staff Development for Educators	\$388.00
	NHSAA	\$310.00
	UNH	\$149.00
		<u>\$11,353.67</u>
2210-640-1 Books & Subscriptions	Education Week	\$39.00
	Great Activities	\$32.00
		<u>\$71.00</u>
2222-111-1 Library Staff	Michelle Powell	\$1,207.64
2222-220-1 Library/Media FICA	Michelle Powell	\$92.35
2220-640-1 Library Books	Kelly Aldrich	\$176.55
		<u>\$176.55</u>
2311-330-0 School Board Stipends	John Hyland	\$750.00
	June Manning	\$500.00
	Kathleen Atkins	\$500.00
	Linda Musmanno	\$500.00
	Gayle Terani	\$500.00
		<u>\$2,750.00</u>
2311-220-0 School Board FICA	John Hyland	\$57.38
	June Manning	\$38.25
	Kathleen Atkins	\$38.25
	Linda Musmanno	\$38.25
	Gayle Terani	\$38.25
		<u>\$210.38</u>
2311-810-0 Board Dues & Fees	NH School Boards Association	\$2,775.74
	Bank Fees	\$1,293.20
		<u>\$4,068.94</u>
2311-890-0 Board Expense	NH School Boards Association	\$45.00
	Gayle Terani	\$28.66
	Echo Communications	\$515.00
	June Manning	\$672.24
	Saymore Trophy	\$90.00
		<u>\$1,350.90</u>

Washington School District 2015 Annual Report

Account	Vendor	AMOUNT
2312-330-0 School Board Clerk & Secretary	Jennie Bruno	\$500.00
2313-110-0 District Treasurer Stipend	Sandra Eccard	\$500.00
2313-220-0 District Treasurer FICA	Sandra Eccard	\$38.25
2313-610-0 Treasurer Supplies	Sandra Eccard	\$385.80
	Adjustment	\$132.81
		<u>\$518.61</u>
2314-330-0 Election Services Stipend		\$0.00
2314-550-0 Election Printing	Premier Printing	\$84.03
2320-250-0 Unemployment Compensation	LGC - WCT, LLC	\$1,413.59
2320-260-0 Workers Compensation	LGC - WCT, LLC	\$4,377.34
2320-290-0 Employee Crim Checks & Physicals	State of NH - Criminal Records Check	\$51.50
	Occupational Health Centers	\$67.50
		<u>\$119.00</u>
2320-310-0 District Share SAU #34	SAU #34	\$131,664.00
2320-380-0 Legal & Audit Fees	Vachon, Clukay & Company PC	\$8,842.37
		<u>\$8,842.37</u>
2320-442-0 Copier Expense		\$0.00
		<u>\$0.00</u>
2320-540-0 Advertising	Granite Quill Publishers	\$267.00
	Villager	\$56.00
	Adjustment	\$1,237.66
		<u>\$1,560.66</u>
2410-110-0 Leadership Stipends	Jane Johnson	\$6,000.00
	Kristine Swain	\$3,000.00
	Kevin Johnson	\$1,561.54
	Adjustment	(\$1,561.54)
		<u>\$9,000.00</u>
2410-220-0 Leadership Stipends FICA	Jane Johnson	\$459.13
	Kristine Swain	\$221.52
	Kevin Johnson	\$117.91
	Adjustment	(\$117.91)
		<u>\$680.65</u>
2410-230-0 Leadership Stipends NHRS	Jane Johnson	\$849.66
		<u>\$849.66</u>
2410-110-1 Office Admin Asst Salary	Kristine Swain	\$20,422.32
Insurance Buyout	Kristine Swain	\$3,000.00
		<u>\$23,422.32</u>

Washington School District 2015 Annual Report

Account	Vendor	AMOUNT
2410-212-1 Office Admin Asst Dental	LGC	\$264.28
		<u>\$264.28</u>
2410-213-1 Office Admin Asst Life	LGC	\$158.40
		<u>\$158.40</u>
2410-214-1 Office Admin Asst LTD	LGC	\$189.18
		<u>\$189.18</u>
2410-220-1 Office Admin Asst./Principal FICA	Kristine Swain	\$1,744.81
	Kevin Johnson	\$2,947.75
	Adjustment	\$117.91
		<u>\$4,810.47</u>
2410-113-1 Principal Office Salary	Kevin Johnson	\$39,038.46
	Adjustment	\$1,561.54
		<u>\$40,600.00</u>
2410-610-1 Principal's Office Supplies	Wicked Good Software	\$900.00
2600-110-1 Maintenance Salary	Elizabeth Sargent	\$34,167.45
Health Insurance Buyout	Elizabeth Sargent	\$6,000.00
Trash Removal	Elizabeth Sargent	\$720.00
		<u>\$40,887.45</u>
2600-211-1 Maintenance Health Ins		\$0.00
2600-212-1 Maintenance Dental Ins	LGC	\$528.48
		<u>\$528.48</u>
2600-213-1 Maintenance Life Ins	LGC	\$52.80
2600-213-1 Maintenance LTD Ins	LGC	\$105.85
2600-220-1 Maintenance FICA	Elizabeth Sargent	\$3,022.03
		<u>\$3,022.03</u>
2600-230-1 Maintenance NHRS	Elizabeth Sargent	\$3,757.38
2600-330-1 Trash Removal	Water System Operators	\$3,635.75
	Eastern Analytical	\$60.00
	Adjustment	\$413.25
		<u>\$4,109.00</u>
2600-422-1 Winter Maintenance		\$0.00
2600-430-1 Repairs & Maintenance	Treasurer, State of NH	\$100.00
	Canon Financial Services	\$1,462.32
	Henniker Septic Service	\$1,214.28
	Tony Riccio	\$2,000.00
	Plummer Well & Pump	\$475.00
	Dorr to Door Plumbing & Heating	\$1,289.00
	CJB Excavation	\$600.00
	SPC	\$660.50

Washington School District 2015 Annual Report

Account	Vendor	AMOUNT
	Wayne Riessle	\$325.00
	Simplex/Grinnell	\$574.55
	Control Technologies	\$9,684.71
	Capitol Alarm Systems	\$1,166.00
	Edmunds	\$974.10
	Canon Solutions America	\$619.07
	Robert Wright	\$1,189.70
	Adjustment	\$6,119.73
		<u>\$28,453.96</u>
2600-520-1 Property Insurance	LGC - PLT, LLC	\$3,354.28
		<u>\$3,354.28</u>
2600-531-1 Telephone	Granite State Telephone	\$461.37
	Century Link	\$75.79
	Adjustment	\$77.15
		<u>\$614.31</u>
2600-610-1 Building Supplies	Sam's Club	\$2,897.56
	New England Paper Supply	\$242.80
	Vacman & Bobbin	\$773.85
	Keene Industrial	\$106.46
	Adjustment	(\$253.05)
		<u>\$3,767.62</u>
2600-622-1 Electricity	Eversource	\$19,860.90
	Adjustment	\$531.40
		<u>\$20,392.30</u>
2600-623-1 Gas Utility	Rymes Heating Oil	\$19,818.59
	Adjustment	(\$739.72)
		<u>\$19,078.87</u>
2600-730-1 Equipment		\$0.00
2721-510-1 Trans To/From School	First Student	\$97,520.00
		<u>\$97,520.00</u>
2725-510-1 Trans Field Trips	First Student	\$1,643.93
		<u>\$1,643.93</u>
5110-910-0 Debt Principal	People's United Bank	\$70,000.00
5120-830-0 New School Debt Interest	People's United Bank	\$5,309.75
5221-930-0 Transfer To Food Service Fund	Washington Elementary School	\$9,000.00
5250-000-0 Special Education Trust	Trustee of Trust Funds	\$10,000.00
5250-930-0 Maintenance Trust	Trustee of Trust Funds	\$10,000.00

Washington School District 2015 Annual Report

Account	Vendor	AMOUNT
3100-110-1 Food Service Wages	Barbara Jackson Adjustment	\$16,510.00 <u>(\$7.65)</u> <u>\$16,502.35</u>
3100-220-1 Food Service FICA	Barbara Jackson Adjustment	\$1,263.03 <u>\$7.65</u> <u>\$1,270.68</u>
3100-430-1 Food Service Repairs & Maint.		\$0.00
3100-610-1 Food Service Supplies		\$0.00
3100-630-1 Food Service Food Purchases	Koffee Kup Bakery HP Hood Sysco Food Services Black River Produce Surplus Distribution	\$753.63 \$1,804.37 \$9,351.46 \$3,348.80 <u>\$82.50</u> <u>\$15,340.76</u>
3100-739-1 Food Service Small Equipment		\$0.00
Total Expenses		<u>\$1,753,667.65</u>
Total Salaries/Benefits/Taxes		<u>\$575,828.71</u>
Total Expenditures		<u>\$2,329,496.36</u>



**WASHINGTON SCHOOL DISTRICT
SPECIAL EDUCATION PROGRAMS AND SERVICES
PURSUANT TO RSA 32:11-A**

	2013-2014	2014-2015
EXPENDITURES		
Special Education General	\$ 93,857	\$ 95,023
Psychological Services	8,500	8,493
Speech & Language Services	13,200	6,422
Physical & Occupational Therapy	20,500	9,654
Out of District Tuition	-	-
TOTAL EXPENDITURES	\$ 136,057	\$ 119,592
REVENUE		
Catastrophic Aid	\$ -	\$ -
Medicaid Reimbursement	2,500	5,385
TOTAL REVENUE	\$ 2,500	\$ 5,385
NET COST OF SPECIAL EDUCATION	\$ 133,557	\$ 114,207

**WASHINGTON SCHOOL DISTRICT
2001 SERIES A NON-GUARANTEED
DATE OF ISSUE 8/15/2001**

FY Ending	Interest	Principal
2014	\$11,532.50	\$70,000.00
2015	\$8,303.75	\$70,000.00
2016	\$5,022.50	\$70,000.00
2017	\$1,680.00	\$70,000.00

Federal Grants 2014-2015

Federal Project Name	End Date	Approved Amount	Funds Collected
IDEA - Individuals with Disabilities Education Act	6/30/2015	\$16,407.00	\$6,413.50
IDEA - Preschool	6/30/2015	\$1,383.00	\$0.00
Title I - Improving the Academic Achievement of the Disadvantaged	8/31/2015	\$20,383.70	\$19,767.43
Title IIA - Improving Teacher Quality - Classroom Reduction	9/30/2016	\$9,157.42	\$4,780.93
REAP - Rural Education Achievement Program	9/30/2016	\$10,971.00	\$8,143.41
		<u>\$58,302.12</u>	<u>\$39,105.27</u>

**Annual School District Meeting
Washington, NH
March 7, 2015**

Moderator Guy Eaton called the meeting to order at 2:00 PM. He let the assembly in the Pledge of Allegiance, introduced the School Board members, the ballot officials, the school district employees who were present and explained the rules of order. The Ballot Box was shown to be empty and was then locked. The polls were declared open at 2:07 and were closed at 3:05.

ARTICLE 1. The following officials were elected by non-partisan ballot: A total of 55 ballots were cast.

School Board Members for 3 years

Gayle Terani 54

Gayle Terani declared elected

Karen Belanger 37 write in votes

Karen Belanger declared elected

Moderator for 1 year

Guy Eaton 55

Guy Eaton declared elected

Clerk for 1 year

Colleen Duggan 54

Colleen Duggan declared elected

Treasurer for 1 Year

No one declared elected. This position will be appointed.

There were 3 write in votes for Sandra Eccard

ARTICLE 2. Gayle Terani moved to hear the reports of agents, auditors and committees or officers chosen and to pass any vote relating thereto.

Motion seconded by Linda Musmanno

Moderator Eaton asked for comments or questions. There was no discussion.

Approved by Voice Vote

ARTICLE 3. Linda Musmanno moved to determine and appoint the salaries of the School Board, and fix the compensation for any other officers or agents of the District as follows:

School Board Chair	\$750
School Board Members	\$500
School District Clerk	\$75
School District Treasurer	\$500
School District Moderator	\$100

Motion seconded by John Hyland.

Moderator Eaton asked for comments or questions. There was no discussion.

Approved by Voice Vote

ARTICLE 4. John Hyland moved to see if the Washington School District will vote to raise and appropriate for the support of schools, the payment of salaries of School District employees, and for the payment of statutory obligations of the District, the sum of \$2,399,522 (two million three hundred ninety nine thousand five hundred and twenty-two dollars) or take any other action in relation thereto. *This article does not include the budget of the School Administrative Unit.*

Seconded by June Manning.

John Hyland took the floor and reviewed the changes in the budget with a power point slide presentation. He noted in the Budget Summary that the overall budget increased 1.9%. which would result in a \$ 0.20 per thousand tax increase.

He noted the 2.4% tuition cost increase which was more than anticipated because last year Washington had an increase of 6 new students being tuitioned to Hillsboro. An increase of 1 student is anticipated for next year. There was a court ordered out-of -district placement that will cost \$14,000 this year, but will have a capped amount of \$42,000 (based on three times the average amount per pupil) on the final placement.

He pointed out the Bond payment decreased about \$6,000 and reminded the voters that the last Bond payment will be made in the 2017 budget. There was a 2% increase in salaries for staff at the elementary school. There was an overall decrease in health insurance costs due to rebates from the Local Government Center and a change in insurance for one staff member. The actual rate for insurance increased 5%. Tuition to Washington Elementary came from 2 Stoddard students this year, next year only one is expected. Hyland pointed out that the School Budget has been very stable over the past seven years. He reminded the voters that the roof of the school will need to be repaired and the maintenance trust fund will be used for those repairs.

Approved by Voice Vote

ARTICLE 5. June Manning moved to see if the voters of the Washington School District will adopt a school administrative unit budget of \$1,052,320 (one million fifty two thousand three hundred twenty dollars) for the forthcoming fiscal year in which \$136,893 (one hundred thirty six thousand eight hundred ninety three dollars) is assigned to the school budget of this school district. This year's adjusted budget of \$1,036,017 (one million thirty six thousand seventeen dollars) for the forthcoming fiscal year in which \$134,597 (one hundred thirty four thousand five hundred ninety-seven dollars) is assigned to the school budget of this school district, will be adopted if the article does not receive a majority vote of all the school district voters voting in this school administrative unit.

Motion Seconded by Kathy Atkins.

Guy Eaton asked Mike Otterson and Bob Williams to count the ballots.

The Motion was approved by Paper ballot

Ballots cast 44 41 yes 3 No

ARTICLE 6. Kathy Atkins moved to see if the Washington School District will raise and appropriate funds from State and Federal aid for the support of school projects as follows: for food service, \$25,000 (twenty-five thousand dollars) and for Federal and State projects, \$50,000 (fifty thousand dollars). These appropriations have offsetting revenues from school lunch sales and State and Federal revenues and do not affect the tax rate.

Motion seconded by Gayle Terani

Approved by Voice Vote

ARTICLE 7. Gayle Terani moved to see if the school district will vote to raise and appropriate the sum of \$10,000 (ten thousand dollars) to add to the expendable trust fund created with the March 2005 Annual Meeting vote, for the purpose of paying for any unanticipated Special Education out-of-district tuition, related transportation and special therapy services and authorize the use of the sum of up to \$10,000 (Ten thousand dollars) from the year end undesignated fund balance (surplus) available on July 1 of 2015, if any, toward this purpose.

Motion Seconded by Linda Musmanno

John Hyland reminded voters that adding to this fund will help offset unanticipated out-of-district tuition.

ARTICLE 8. Linda Musmanno moved to see if the school district will vote to raise and appropriate the sum of \$10,000 (ten thousand dollars) to add to the expendable trust fund created with the March 2005 Annual Meeting vote, for the purpose of maintaining and repairing school buildings and authorize the use of the sum of up to \$10,000 (Ten thousand dollars) from the year end undesignated fund balance (surplus) available after July 1 of 2015, if any, toward this purpose.

Seconded by Kathy Atkins.

John Hyland reminded the voters that the roof repair project was previously estimated to cost \$70,000 - \$80,000. Sandy Poole asked if the roof had been shoveled over the winter. John Hyland reported that part of it had been shoveled.

Approved by Voice Vote

ARTICLE 9. To transact any other business that may legally come before said meeting.
Moderator Guy Eaton read a poem he composed for resigning School Board Chair John Hyland. John Hyland was also presented with a plaque by June Manning. Hyland thanked everyone.

Washington School District 2015 Annual Report

Al Krygeris moved to adjourn at 2:50 PM. Motion seconded by Sue Hoffstetter.

Approved by Voice Vote

The Polls were closed at 3:05 PM.

**Respectfully Submitted,
Colleen Duggan
School Board Clerk**

**A True Copy – Attest:
Colleen Duggan
School Board Clerk**