

City Of Torrington

ENGINEERING DEPARTMENT
(860) 489-2234
Fax: (860) 489-2550



140 Main Street • City Hall
Torrington, CT 06790-5245

Addendum No 1 – September 24, 2012

Re: “MOUNTAIN ROAD DRAINAGE IMPROVEMENTS”

BID NO. MRD-027-092612

1. Delete Technical Specification section 01120 “Maintenance and Protection of Traffic” (pages 01120-01 through 01120-10) in its entirety and replace with the attached pages 01120-01 through 01120-04 (with footnote indicating “Addendum 1 September 24, 2012”).

SECTION 01120

MAINTENANCE AND PROTECTION OF TRAFFIC

PART 1 - GENERAL

1.01 SCOPE OF WORK

- A. The work under this section shall consist of maintaining and protecting traffic in the project area to the satisfaction of the applicable City Traffic Authority and the ENGINEER. Unless otherwise specified within the Contract Documents, the CONTRACTOR must maintain pedestrian and vehicular traffic at all times. ~~Access drives and loading areas adjacent to the project cannot be blocked.~~
- B. The Contractor shall provide any traffic control devices as may be necessary in accordance with this specification, the "Manual on Uniform Traffic Control Devices" (MUTCD, Latest Edition), Section 6F, Temporary Traffic Control Zone Devices and Section 9.71 of the STANDARD SPECIFICATIONS.
- C. The CONTRACTOR shall provide at his own expense, suitable bridges over excavations where needed for the accommodation and safety of the traveling public. He shall erect suitable barriers around the excavation to prevent accidents to the public and shall place and maintain during the night sufficient lights on or near the Work. ~~A space of twenty (20') feet must be left so that free access may be had at all times to fire hydrants and proper precautions shall be taken so that the entrances to fire hydrants and fire stations shall not be blocked or obstructed.~~

PART 2 - PRODUCTS

2.01 MATERIALS

All signs, barricades and necessary devices shall be of sufficient size and color so as to adequately inform the public of any possible traffic hazards and alternate routes and shall conform to the details as outlined in the MUTCD, Section 6F, titled "Temporary Traffic Control Zone Devices".

PART 3 – CONSTRUCTION METHODS

3.01 WORK BY OTHERS

The Contractor is advised that he shall coordinate the maintenance and protection of traffic, both vehicular and pedestrian for the entire duration of the project. The Contractor shall insure that the provisions provided herein shall be complied with by all parties involved in work on this contract. The Contractor is advised that the CITY may have other project(s) under construction at the time this project is under construction. The Contractor shall, therefore, determine from the CITY if another project is under construction and coordinate his work with the Contractor of the other project(s).

3.02 MAINTENANCE AND PROTECTION OF TRAFFIC EQUIPMENT

Traffic drums shall be used to separate moving traffic from the work area. Each drum shall be affixed with high intensity flashers for nighttime operation. The Contractor shall provide Type III barricades to barricade work zones from traffic during non-work hours. One existing City owned concrete Jersey Barrier currently on site may be used by the Contractor during construction. Upon completion of the work the Contractor shall load the one Jersey Barrier onto a City truck for removal. The Contractor shall coordinate the pickup schedule with the City Public Work Department. Barricades shall be affixed with suitable construction signs.

3.03 TRAFFIC CONTROL

- A. The Contractor shall furnish, light and maintain such signs necessary for the safe regulation or convenience of traffic. Proper distances between advance warning signs and proper taper lengths must be provided. Said signs will be in conformance with the applicable requirements of the "Manual on Uniform Traffic Control Devices". All signs shall be subject to the approval of the ENGINEER. The Contractor shall provide, erect and maintain suitably lighted barricades, warning lights, etc. as needed or as directed in order to keep people, animals and vehicles from excavations, obstacles, etc. The Contractor shall take other such reasonable means or precautions as may be needed to prevent damage or injury to persons, vehicles or other property and to minimize the inconvenience and danger to the public by his construction operations. The Contractor shall confine his occupancy of public or traveled ways to

MAINTENANCE AND PROTECTION OF TRAFFIC

01120-01

Addendum #1 September 24, 2012

the smallest space compatible with the efficient and safe performance of the work contemplated by the Contract. ~~He shall arrange his operations to provide access to properties along the street including temporary bridges to driveways and provide access to fire hydrants, manholes, gate boxes or other utilities.~~

- B. The Contractor shall observe and obey all local and state laws, ordinances, regulations and permits in relation to the obstruction of streets and highways, keeping passageways open and protecting traffic where there may be danger from blasting or other construction activities.
- C. Barricades in accordance with the MUTCD shall be furnished by the Contractor and put up and maintained at all times during the night and daytime, around all open ditches, steep roadside drop-offs, trenches, excavations or other work potentially dangerous to traffic.

3.04 MAINTENANCE OF TRAVEL LANES

During construction hours, a minimum of one - 11 foot wide travel lane shall be open to traffic. **A minimum of one trafficman/flagman shall be used for traffic control during construction hours when one lane travel is setup through the work area.** Two - 11 foot minimum wide travel lanes shall be open to traffic during non-construction hours, weekends, and holidays. The Contractor shall provide adequate lighted barricades. ~~Also, during the above mentioned times, all driveways and parking lots shall be accessible to vehicular traffic.~~

3.05 ROAD CONSTRUCTION

It shall be the sole responsibility of the contractor to keep the Police and Fire Departments, Ambulance Services and ENGINEER, pre-warned at least 72 hours in advance of changes in traffic patterns due to reduction of travel widths of streets.

The contractor shall supply, install, maintain, replace, as necessary, adjust, move, relocate and store all signs, suitable lighted barricades, traffic cones and traffic delineators, as necessary to carry out the traffic routing plan and maintain vehicular and pedestrian traffic. Sign placement and wording to be approved by ENGINEER. All of this work shall meet with the requirements of the City Traffic Authority and ENGINEER. If additional signs and protection is needed, the total cost shall still be paid by the Contractor.

3.06 TRAFFIC CONTROL PROCEDURES

The proper and adequate signing of the construction zone is considered of utmost importance. Prior to the start of construction, a signing and barricade plan shall be submitted by the Contractor for review by the ENGINEER and City Traffic Authority. Such plans shall show sequence or phases of operations.

3.07 TRAFFICMEN

Trafficmen/flagmen shall used for the control and direction of vehicular traffic and pedestrians shall be equipped with high visibility safety garment that complies with OSHA, MUTCD, ASTM Standards and the safety garment shall have the words "Traffic Control" clearly visible on the front and rear panels (minimum letter size 2 inches. Traffic men shall be solely used to direct traffic and shall not be utilized as part of the work crew.

PART 4 – MEASUREMENT AND PAYMENT

- A. This work will be paid for at the Contract Lump Sum Price for "Maintenance and Protection of Traffic". This price shall include the cost of all trafficmen, the cost of all signs and barricades and all flashing lights, flares, lanterns, etc., and all materials, labor and equipment necessary for the maintenance and protection of traffic as specified herein.
- B. The amount to be paid for this item per each pay application shall be the Lump Sum Bid Price divided by the number of weeks allowed for completion of the Contract work multiplied by the number of weeks the specific pay application applies to.

I. TRAFFIC CONTROL PLANS

The following details and notes shows possible work area protection and traffic control scenarios:

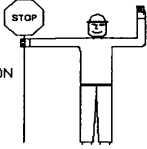
**WORK IN TRAVEL LANE AND SHOULDER
TWO LANE HIGHWAY
ALTERNATING ONE-WAY TRAFFIC OPERATIONS**

HAND SIGNAL METHODS TO BE USED BY FLAGMEN / FLAGGERS

THE FOLLOWING METHODS FROM SECTION 6E.04 FLAGGER PROCEDURES IN THE "MANUAL ON UNIFORM TRAFFIC CONTROL DEVICES" SHALL BE USED BY FLAGMEN / FLAGGERS WHEN DIRECTING TRAFFIC THROUGH A WORK AREA. THE STOP/SLOW SIGN PADDLE (SIGN NO. 80-9950) SHOWN ON THE TYPICAL DETAIL SHEET ENTITLED "SIGNS FOR CONSTRUCTION AND PERMIT OPERATIONS" SHALL BE USED.

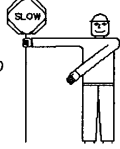
A. TO STOP TRAFFIC

TO STOP ROAD USERS, THE FLAGGER SHALL FACE ROAD USERS AND AIM THE STOP PADDLE FACE TOWARD ROAD USERS IN A STATIONARY POSITION WITH THE ARM EXTENDED HORIZONTALLY AWAY FROM THE BODY. THE FREE ARM SHALL BE HELD WITH THE PALM OF THE HAND ABOVE SHOULDER LEVEL TOWARD APPROACHING TRAFFIC.



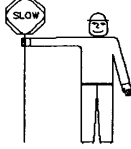
B. TO DIRECT TRAFFIC TO PROCEED

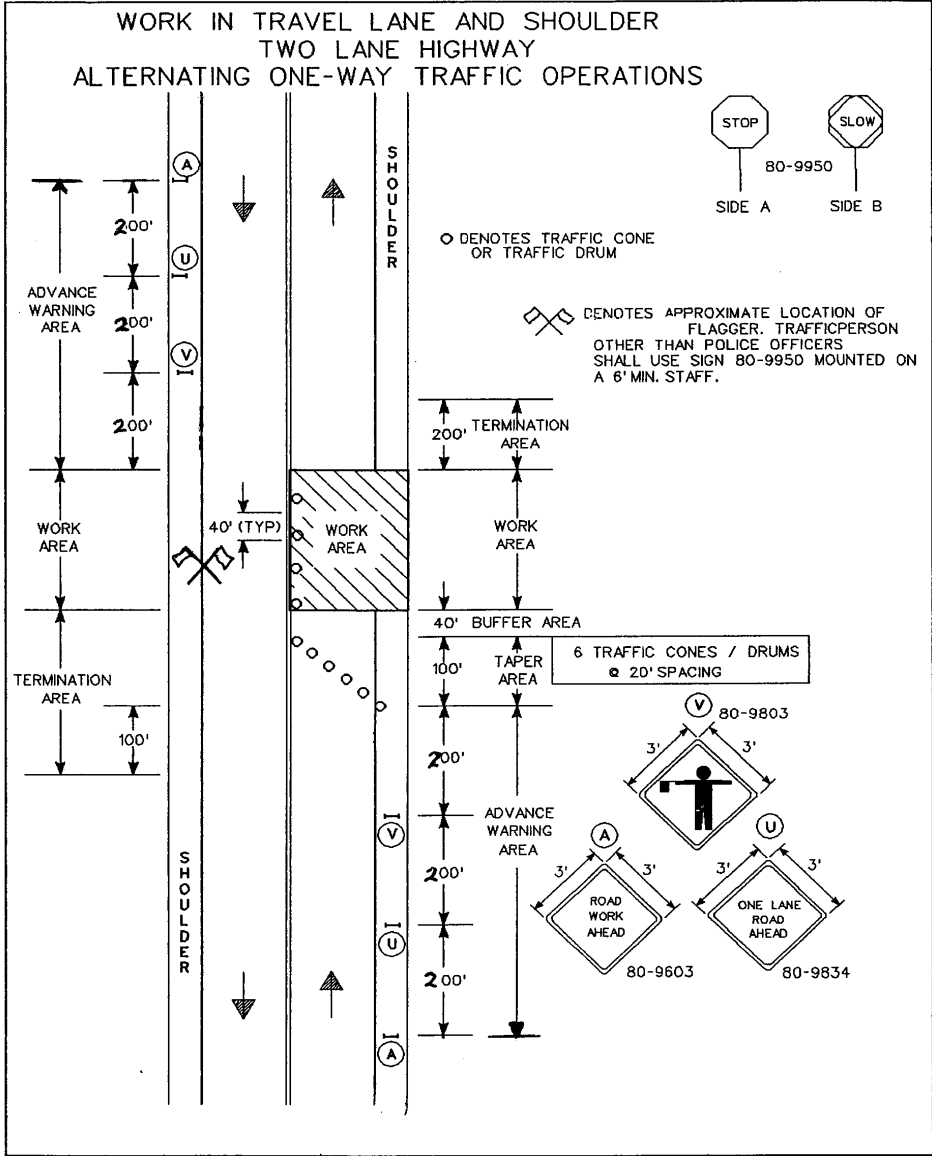
TO DIRECT STOPPED ROAD USERS TO PROCEED, THE FLAGGER SHALL FACE ROAD USERS WITH THE SLOW PADDLE FACE AIMED TOWARD ROAD USERS IN A STATIONARY POSITION WITH THE ARM EXTENDED HORIZONTALLY AWAY FROM THE BODY. THE FLAGGER SHALL MOTION WITH THE FREE HAND FOR ROAD USERS TO PROCEED.



C. TO ALERT OR SLOW TRAFFIC

TO ALERT OR SLOW TRAFFIC, THE FLAGGER SHALL FACE ROAD USERS WITH THE SLOW PADDLE FACE AIMED TOWARD ROAD USERS IN A STATIONARY POSITION WITH THE ARM EXTENDED HORIZONTALLY AWAY FROM THE BODY. TO FURTHER ALERT OR SLOW TRAFFIC, THE FLAGGER HOLDING THE SLOW PADDLE FACE TOWARD ROAD USERS MAY MOTION UP AND DOWN WITH THE FREE HAND, PALM DOWN.





END OF SECTION