

**TORRINGTON FIRE HEADQUARTERS
EMERGENCY DISPATCH EXPANSION PROJECT / E.O.C.**

**111 WATER STREET
TORRINGTON, CONNECTICUT**

ADDENDUM No. 1

CLARIFICATIONS TO DRAWINGS

DRAWING L-1.0 – SCHEMATIC SITE PLAN

Amend the area indicated on the drawing as ‘NEW PLANTINGS WITHIN MULCH BED’ to refer to the PLANT LEGEND shown on the attached sketch.

ATTACHMENTS

Drawing SK-1 Site Plan Revision – Planting Materials Clarification

Dated Sept 16, 2010

END OF ADDENDUM NO. 1

G.ADDENDUM1

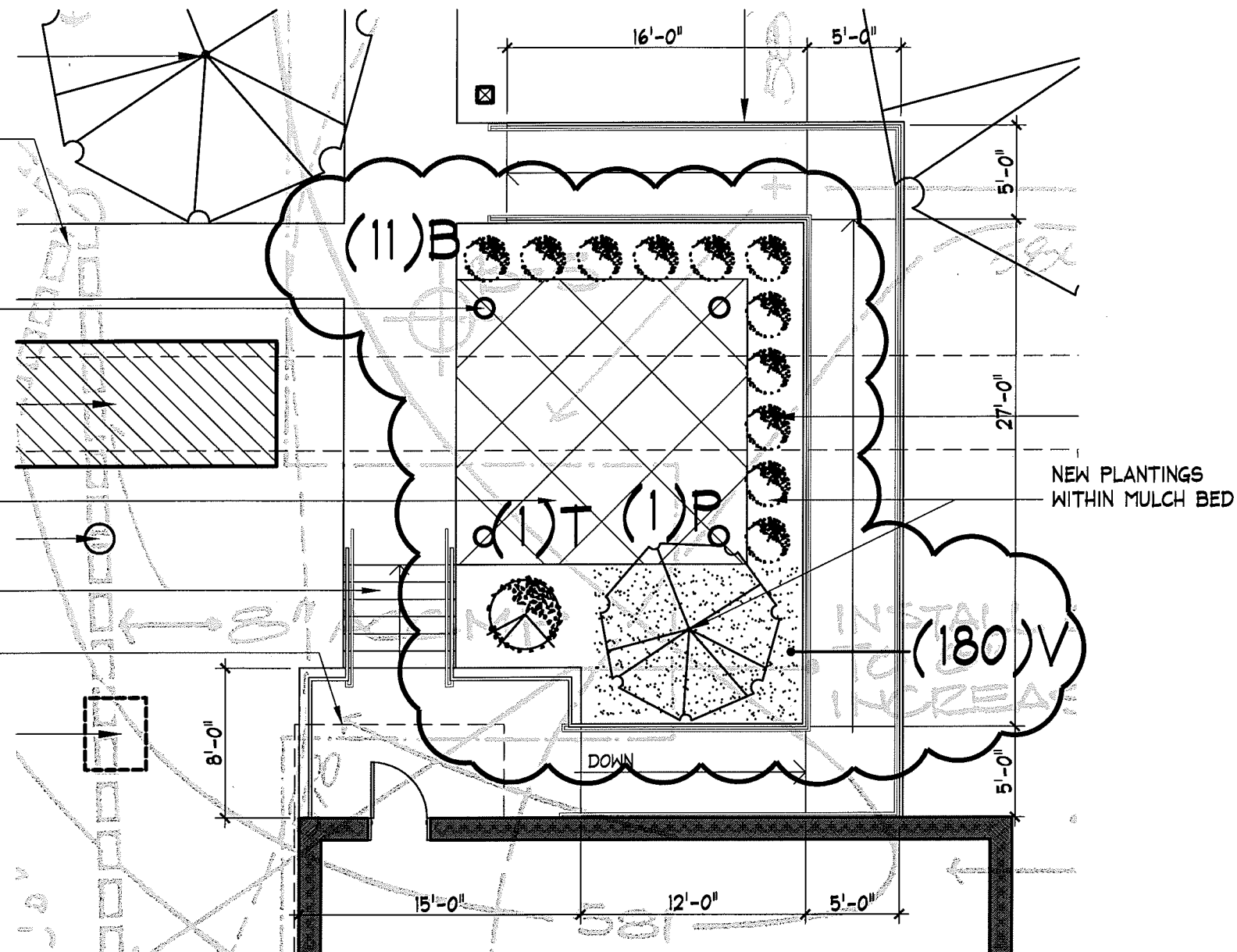
NEW CONCRETE WALKS -
SEE OVERALL PLAN FOR DIMS

TYP OF FOUR (4) NEW
12' HIGH DECORATIVE
POST TOP LIGHT FIXTURES
AT CONCRETE PATIO AREA

NEW CONCRETE PATIO AREA,
SCORE PATTERN AS SHOWN

CONCRETE ENTRANCE STAIR
AND STOOP W/ PAINTED STEEL
GUARDS AND HANDRAILS

LINE OF CANOPY ABOVE



2

PLAN DETAIL AT ENTRANCE / HC RAMP AREA

SCALE: 1/8" = 1'-0"

PLANT LEGEND

Qty	code	Botanical Name	Common Name	size
1	P	Prunus subhirtella pendula 'Snow Fountain'	'Snow Fountain' Weeping Cherry	1.5-2" cal
1	T	Thuja occidentalis 'Rheingold'	'Rheingold' Arborvitae	18" height
11	B	Buxus microphylla 'Winter Gem'	'Winter Gem' Boxwood	12-18" ht
180	V	Vinca minor	Periwinkle	bare root

Kimberly H. Barbieri LA

date

PROPOSED ADDITION
TORRINGTON FIRE HEADQUARTERS
EMERGENCY DISPATCH EXPANSION PROJECT / E.O.C.
111 WATER STREET
TORRINGTON, CONNECTICUT

JHI
JACUNSKI HUMES
ARCHITECTS, LLC

15 MASSIRIO DRIVE
SUITE 101
BERLIN, CT 06037
TEL 860-838-9221
FAX 860-838-9223

*SITE PLAN
REVISION*

*PLANTING
MATERIALS
CLARIFICATION*

ref: 2 / L-1.0

PROJ. NO. JHA 102B	DRAWING NO.
SCALE: 1/8" = 1'-0"	SK-1
DATE: SEPT 16, 2010	