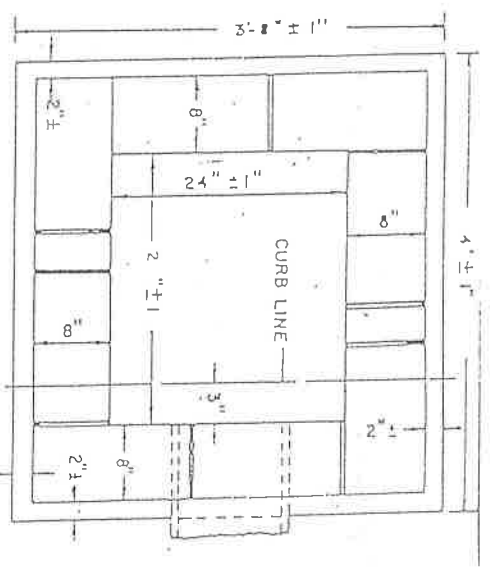
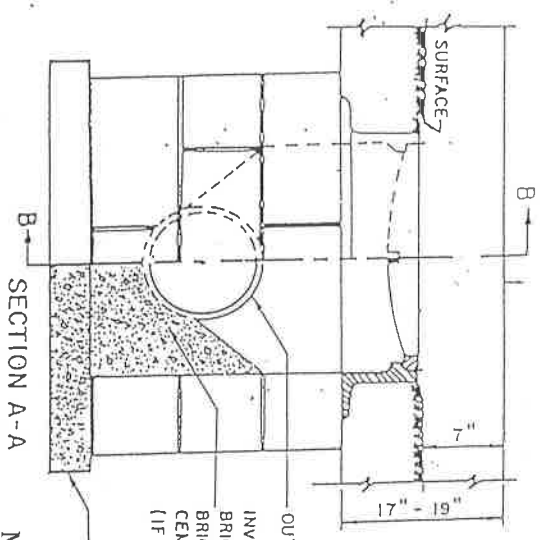


PARALLEL BAR GRATE



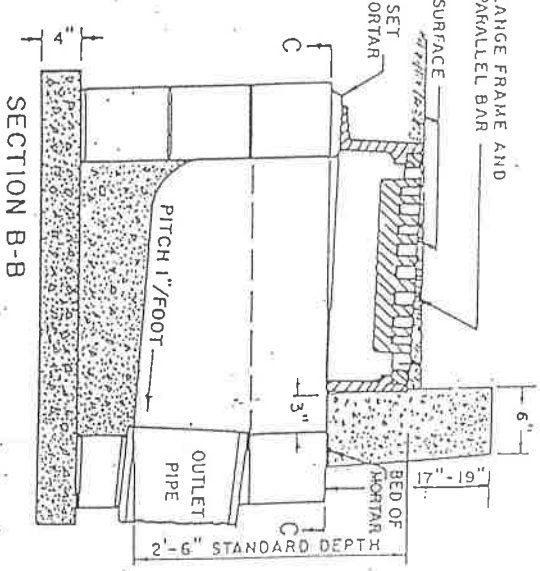
SECTION C-C



SECTION A-A

OUTLET PIPE
 INVERT TO BE CONSTRUCTED OF BRICK AS SHOWN IN DETAILS FOR BRICK GUTTER INLET OR CLASS "D" CEMENT CONCRETE MASONRY (IF HANDMIXED SEE SPECIFICATIONS)
 CLASS "D" CEMENT CONCRETE OR PRECAST CONCRETE SECTIONAL PLATES
 Mead, Leavitt and Mink Streets

STANDARD 3'-FLANGE FRAME AND STANDARD PARALLEL BAR FRAME CASTING SET IN FULL BED OF MORTAR



SECTION B-B

RUNNINS RIVER POLLUTION REMEDIATION PROJECT

SEEKONK, MA

DROP INLET TO CATCH BASIN

Holmes Engineering, Inc.
 Civil Engineering and Consulting
 622 Berkeley Street
 Berkeley, MA 02779
 Phone: 508-880-6535

DATE

JANUARY 9, 1996

SHEET

1

Holmes Engineering, Inc.
Civil Engineering and Consulting
622 Berkeley Street
Berkeley, MA 02779
Phone: 508-880-6535

OIL SEPARATOR AND LEACHING CATCH BASIN

2

SHEET

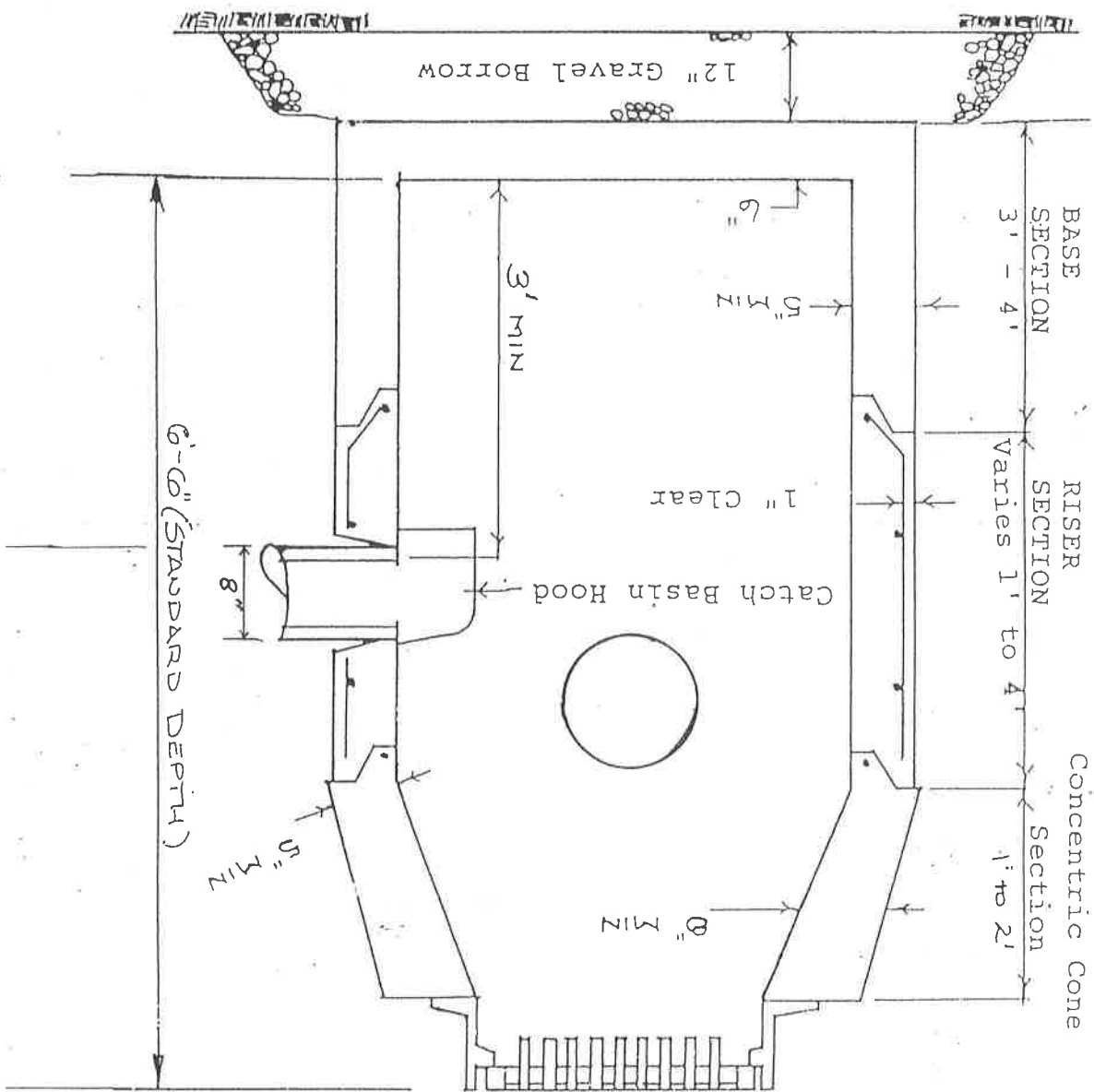
Seekonk, MA

Runnins River Pollution Remediation Project

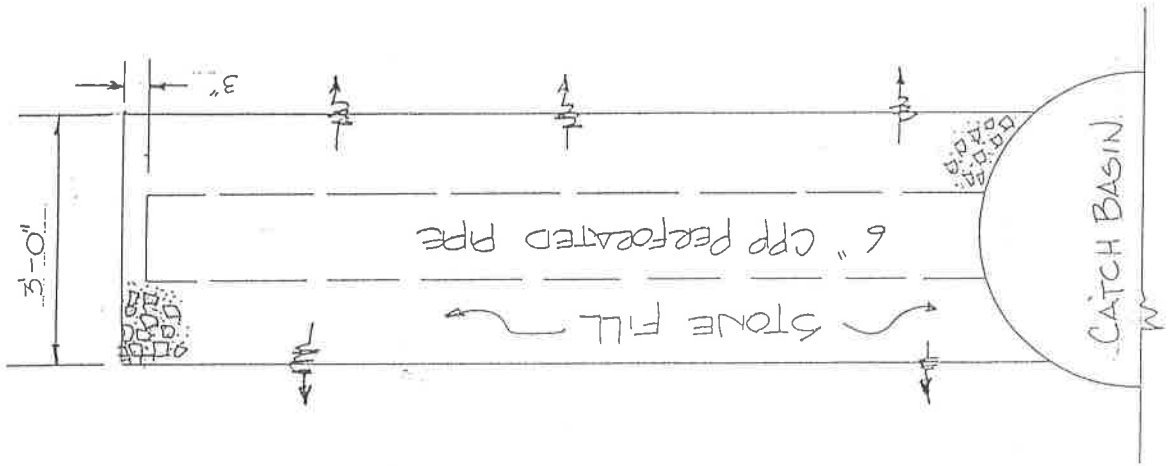
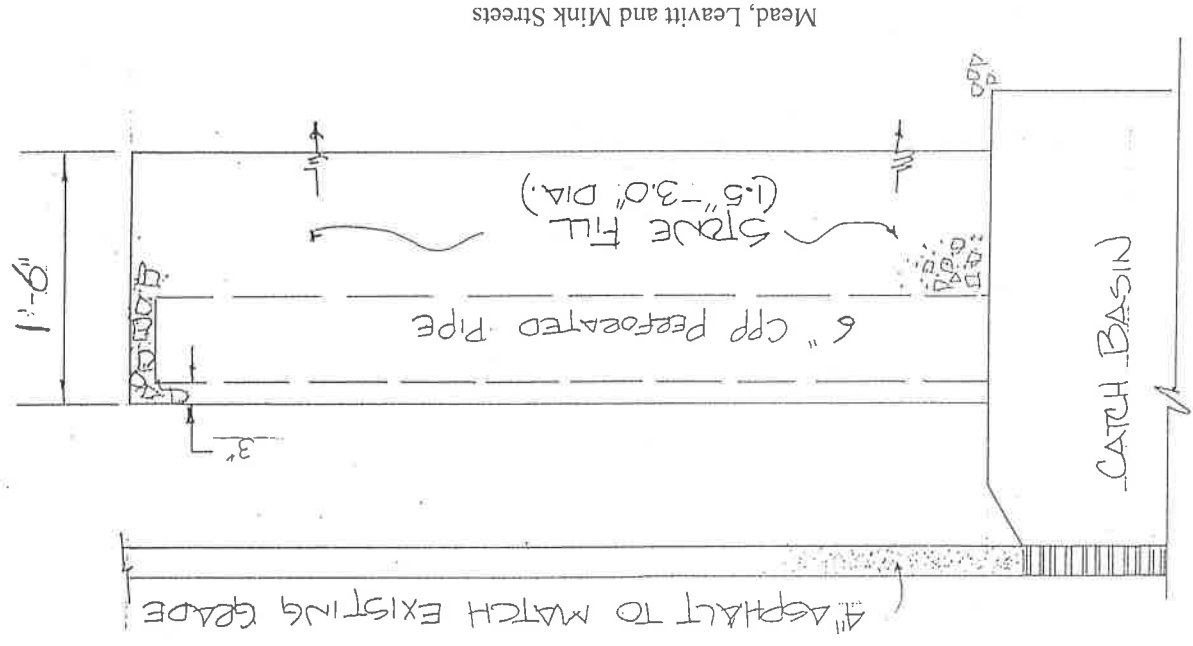
DATE

JANUARY 9, 1996

Mead, Leavitt and Mink Streets

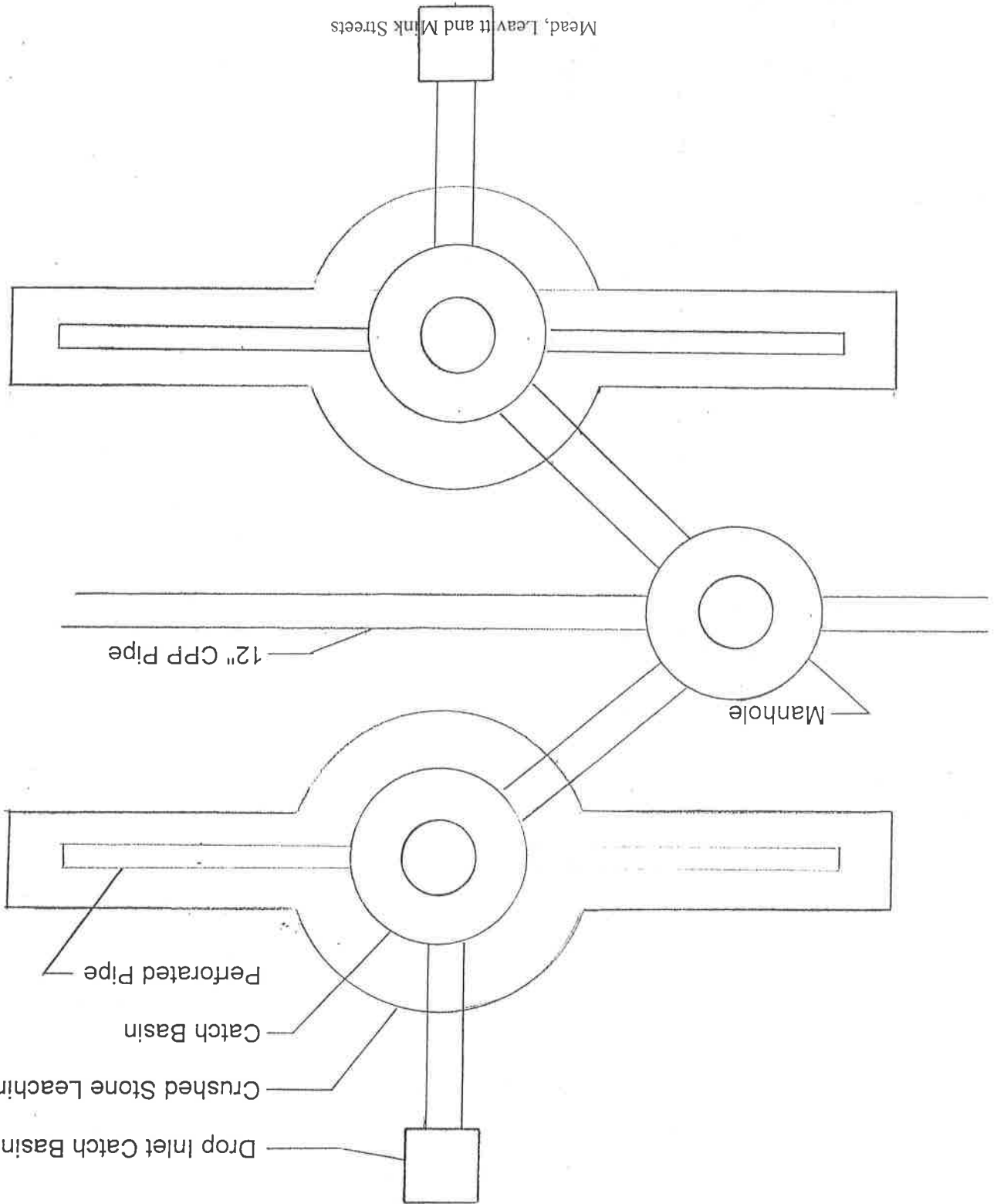


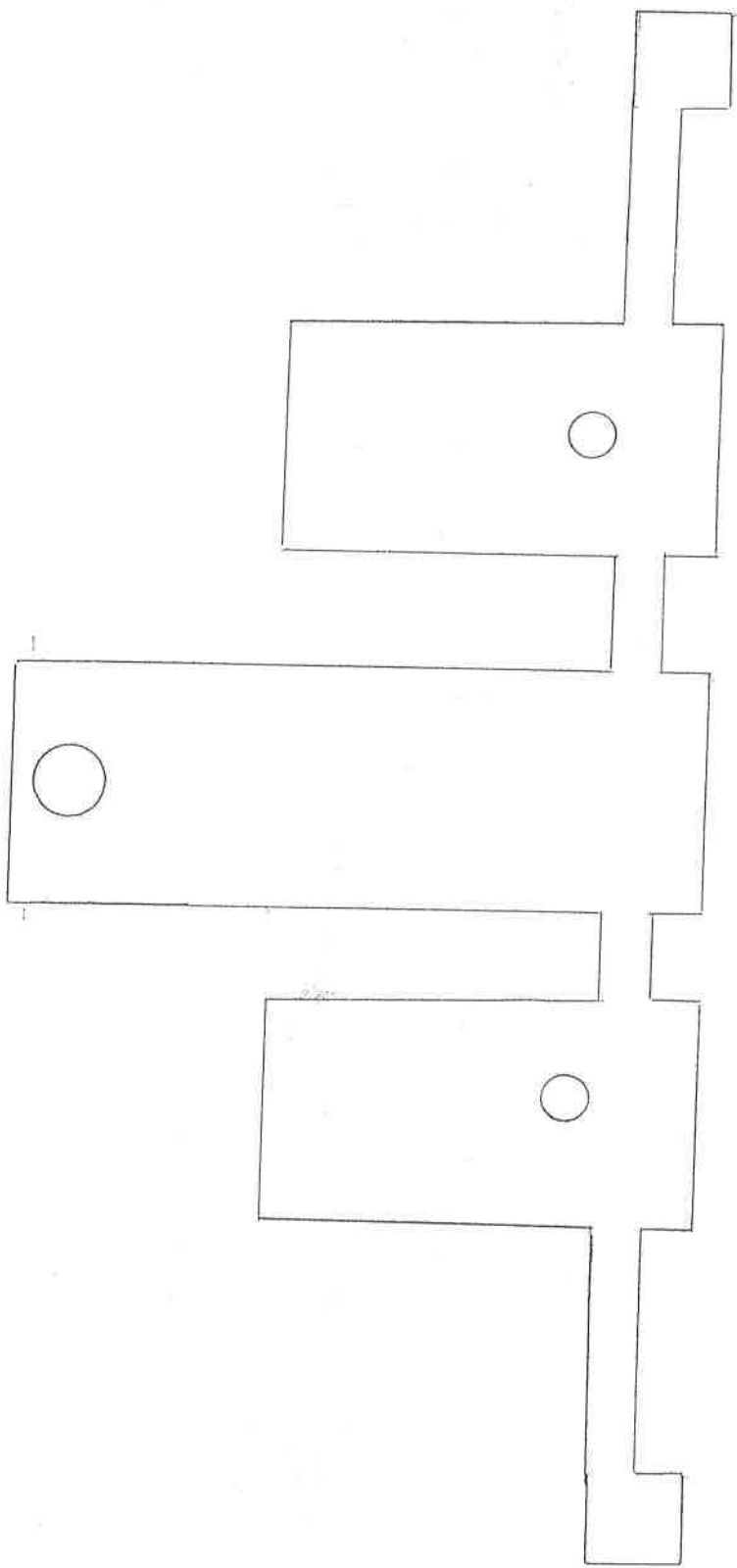
SHEET 3	LEACHING TRENCH	Holmes Engineering, Inc. Civil Engineering and Consulting 622 Berkeley Street Berkeley, MA 02779 Phone: 508-880-6535
DATE JANUARY 9, 1996	Runnins River Pollution Remediation Project Seekonk, MA	



Stormwater Treatment Chamber
 N.T.S.

SHEET 5	TYPICAL DRAINAGE PLAN VIEW	Holmes Engineering, Inc. <i>Civil Engineering and Consulting</i> 622 Berkeley Street Berkeley, MA 02779 Phone: 508-880-6535
DATE JANUARY 9, 1996	Runnins River Pollution Remediation Project Seekonk, MA	





Drop Inlet

Leaching Basin/
Oil Separator

Manhole

Leaching Basin/
Oil Separator

Drop Inlet

Mead, Leavitt and Mink Streets

RUNNINS RIVER POLLUTION REMEDIATION PROJECT

SEEKONK, MA

Roadway Cross Section Elevation View

DATE

JANUARY 10, 1997

SHEET

6

Holmes Engineering, Inc.
Civil Engineering and Consulting
622 Berkeley Street
Berkeley, MA 02779
Phone: 508-880-6535