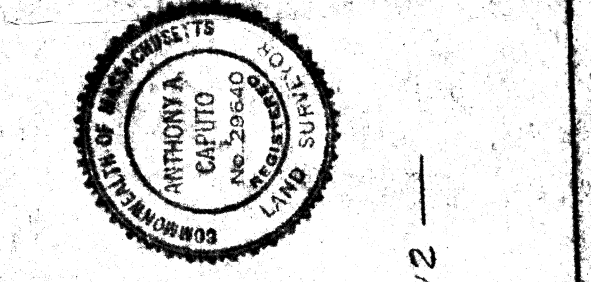
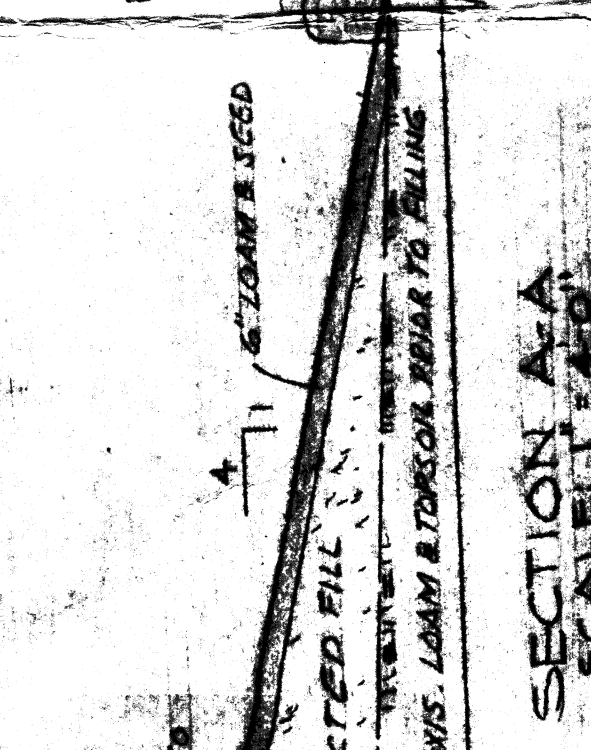


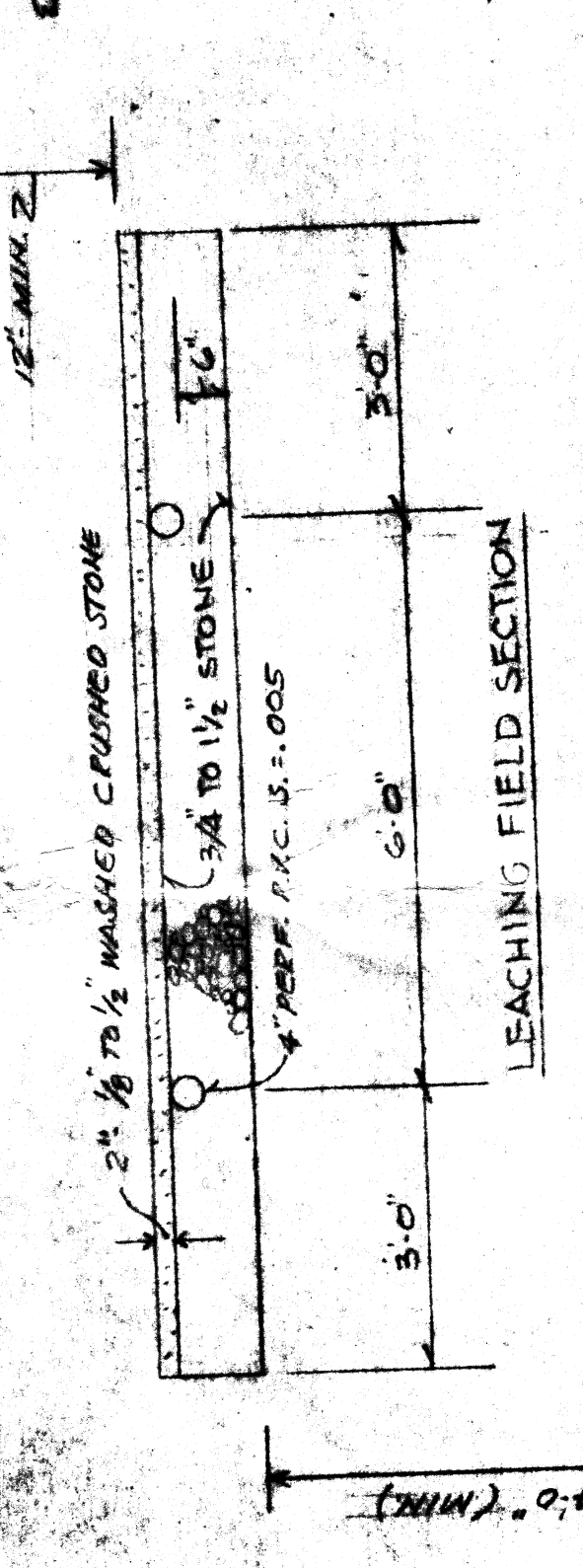
PROPOSED SITE PLAN
SEEKONK, MASSACHUSETTS
FOR
AUBIN CORP.
BY CAPUTO WICK LTD. / DEC. 1983
SCALE 1"=40'
REVISED FEB 27, 1984



PLANNED AND DESIGNED BY
CAPUTO WICK LTD.
CITY/STATE: LAMON & TORSON ROAD TO FALL RIVER
SCALE: 1"=40'



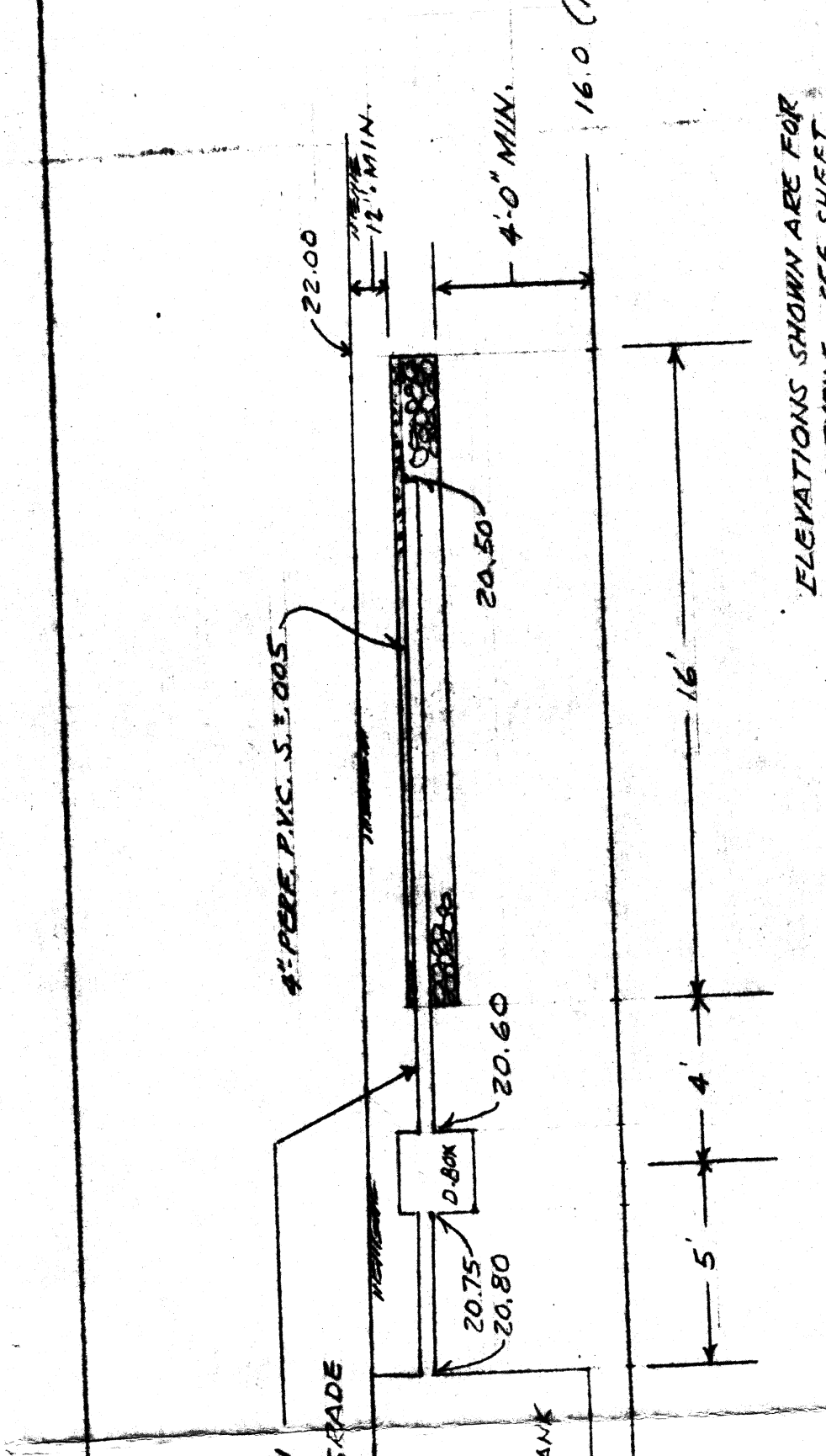
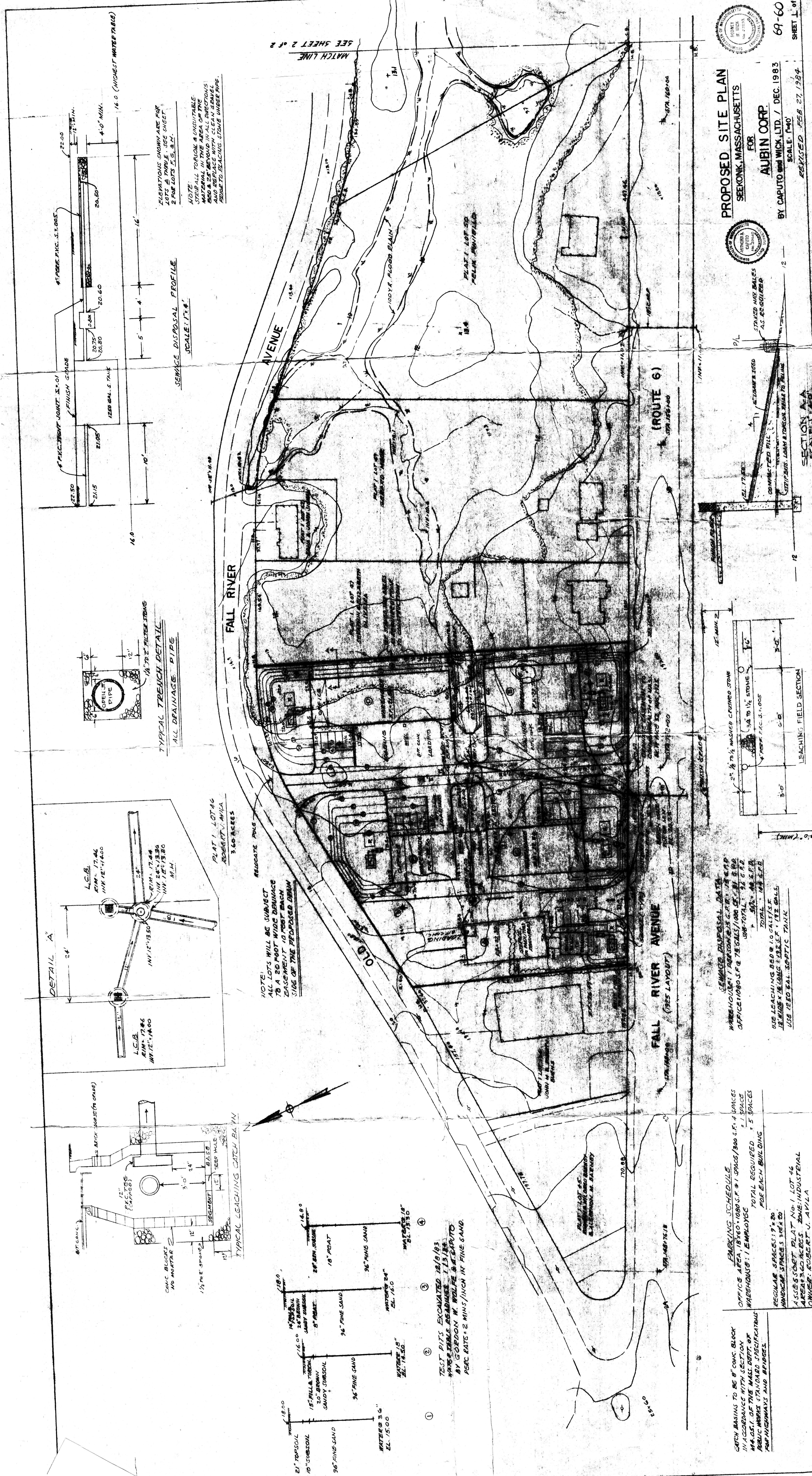
SECTION A-A
SCALE 1/4"=1'-0"



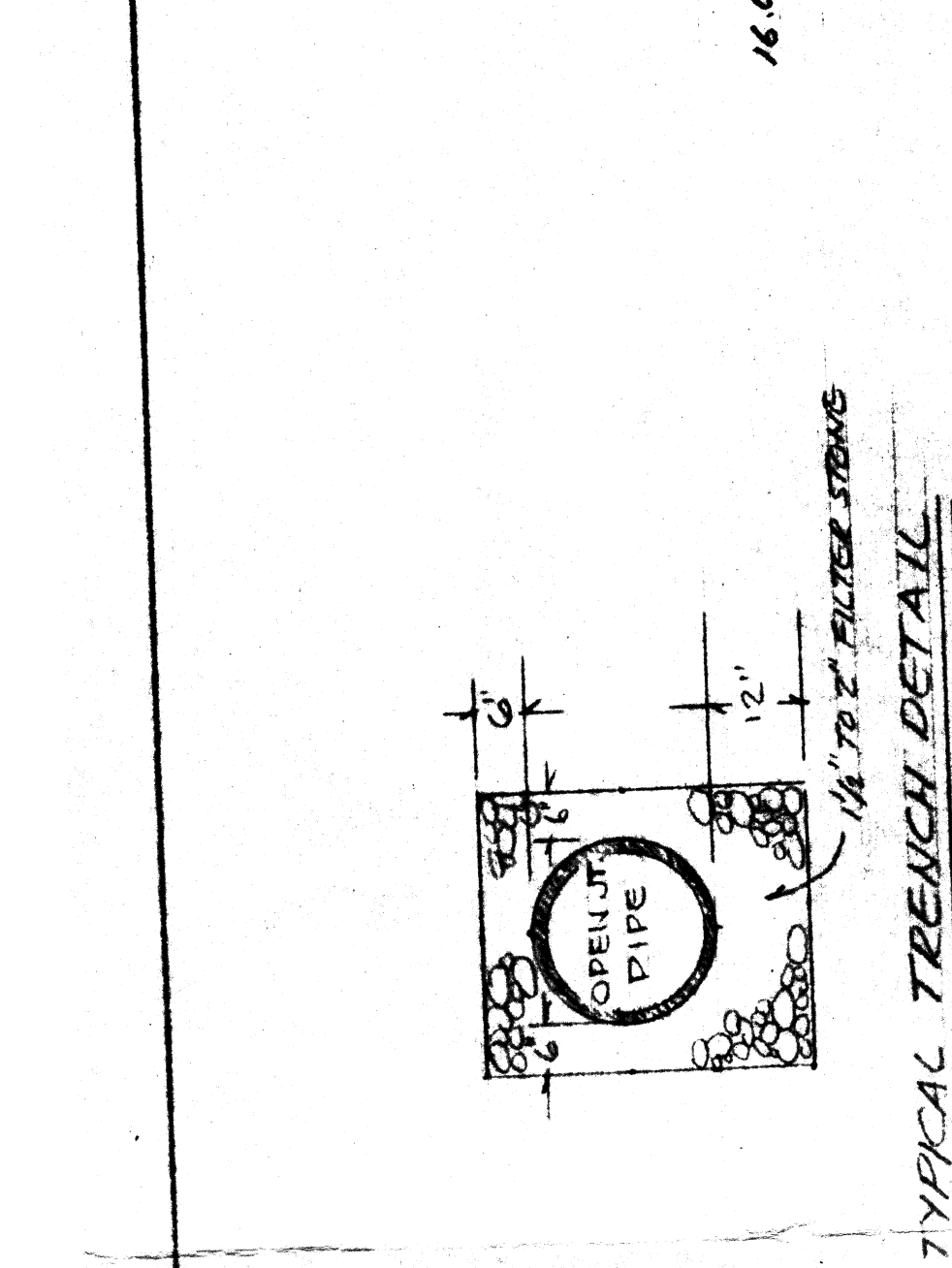
LEACHING FIELD SECTION
SCALE 1"=4'-0"

SEWERAGE DISPOSAL DATA
WAREHOUSE: 17,000 S.F. (17,000 G.P.D.)
OFFICE: 10,000 S.F. (10,000 G.P.D.)
TOTAL: 27,000 G.P.D.
USE LEACHING BED @ 10 G.P.D./S.F.
LEACHING TANKS: 2,700 G.P.D. @ 10 G.P.D./S.F.
USE 18 24" DIA. SEPTIC TANKS

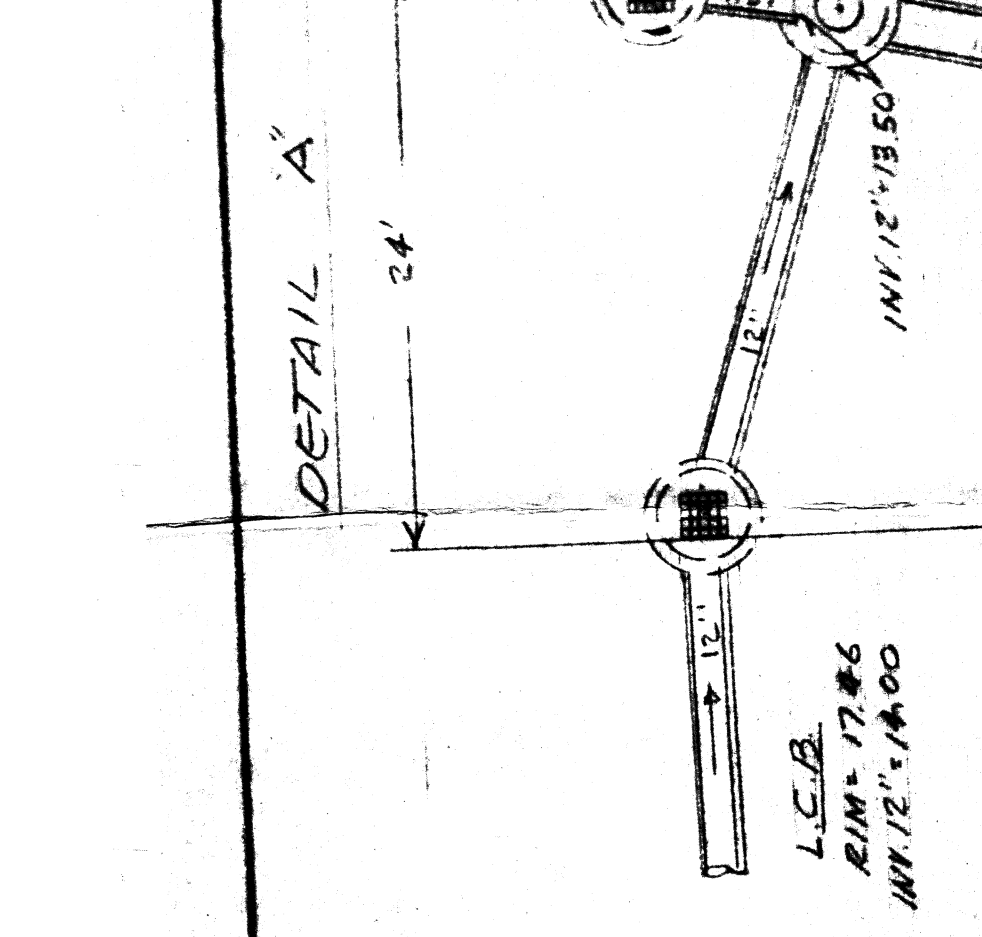
CATCH BASINS TO BE 8' CONCRETE BLOCK
IN ACCORDANCE WITH SECTION
94A.05.1 OF THE MASS. DEPT. OF
PUBLIC WORKS STANDARD SPECIFICATIONS
FOR HIGHWAYS AND BRIDGES.
REGULAR SPACING: 9' x 20'
HANDICAP SPACES: 5' x 8'
PARKING SCHEDULE
OFFICE AREA: 18,000 S.F. @ 1 SPACE/300 S.F. = 6 SPACES
WAREHOUSE: 1 EMPLOYEE TOTAL REQUIRED = 1 SPACE
TOTAL REQUIRED = 7 SPACES
FOR EACH BUILDING
ASSESSMENT PLAT NO. 1 LOT 46
AREAS: ROBERT J. AVILA
OWNER: ROBERT J. AVILA
RETENTIONER: AUBIN CORP.



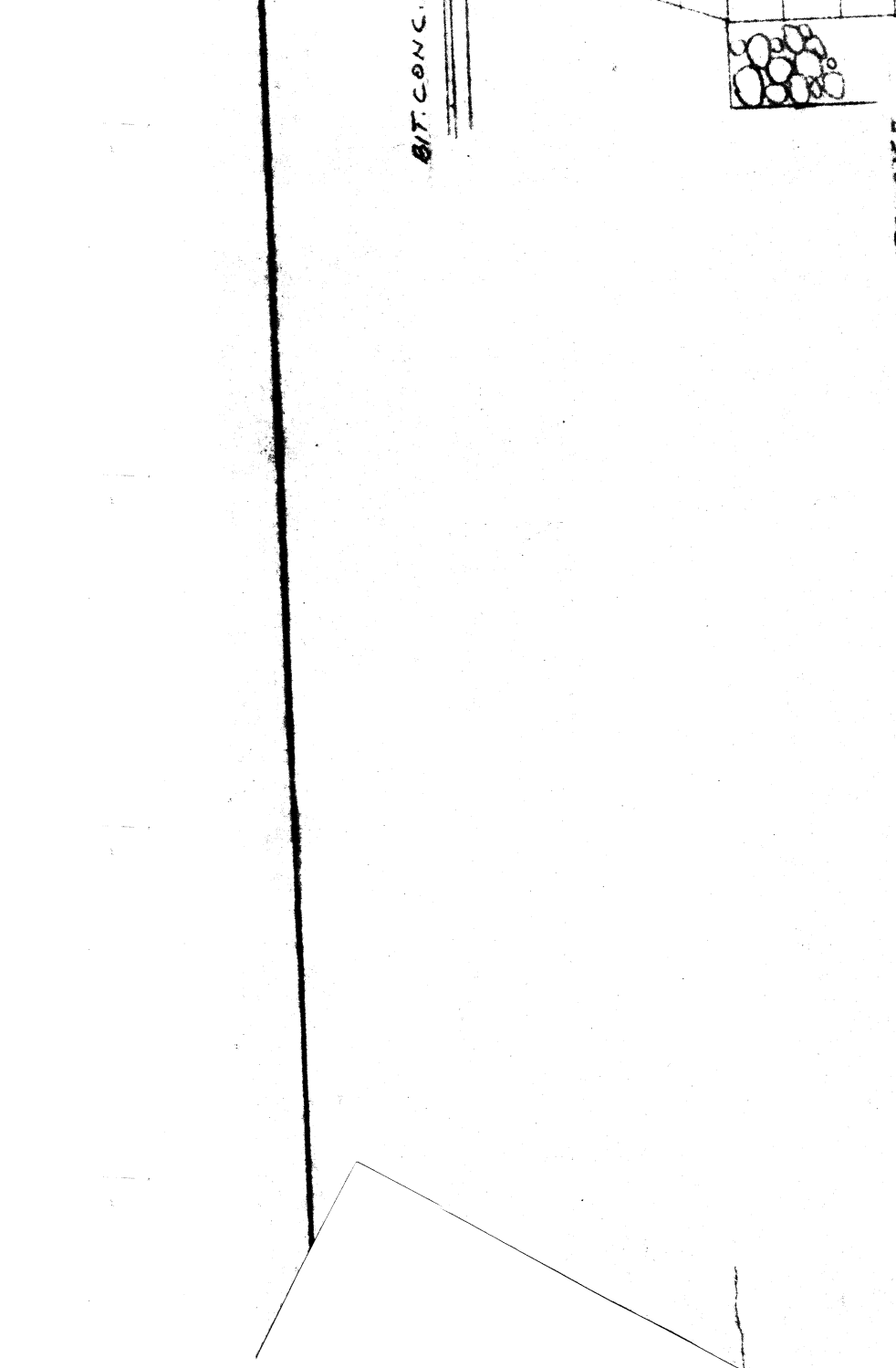
SEWERAGE DISPOSAL PROFILE
SCALE: 1"=1'-0"



TYPICAL TRENCH DETAIL
SCALE: 1"=1'-0"



DETAIL A
SCALE: 1"=1'-0"



TYPICAL LEACHING CATCH BAY
SCALE: 1"=1'-0"

SEE SHEET 2 OF 2
MATCH LINE

ELEVATIONS SHOWN ARE FOR
TOP OF FINISH GRADE
2 FOR 40' x 40' LOTS.

NOTE:
VOID ALL TOXIC & UNSUITABLE
MATERIAL IN THE AREA OF THE
BED & LEACHING TANKS. CLEAN SAND
SHOULD BE USED TO PLACING STONE UNDER PIPE.

RELOCATE PMS
RELOCATE PMS
RELOCATE PMS

NOTE:
ALL LOTS WILL BE SUBJECT
TO A 20 FOOT WIDE DRAINAGE
EASEMENT ON THE
SIDE OF THE PROPOSED DRAIN

TEST PITS EXCAVATED 12/9/83
BY GORDON W. WOLFE & CAPUTO
PERC. RATE = 2 MINS./INCH IN FINE SAND.

15" FINE SAND
10" SUBSOIL
WATER @ 3.6"
EL. 15.00

15" FINE SAND
10" SUBSOIL
WATER @ 3.6"
EL. 15.00

15" FINE SAND
10" SUBSOIL
WATER @ 3.6"
EL. 15.00

15" FINE SAND
10" SUBSOIL
WATER @ 3.6"
EL. 15.00