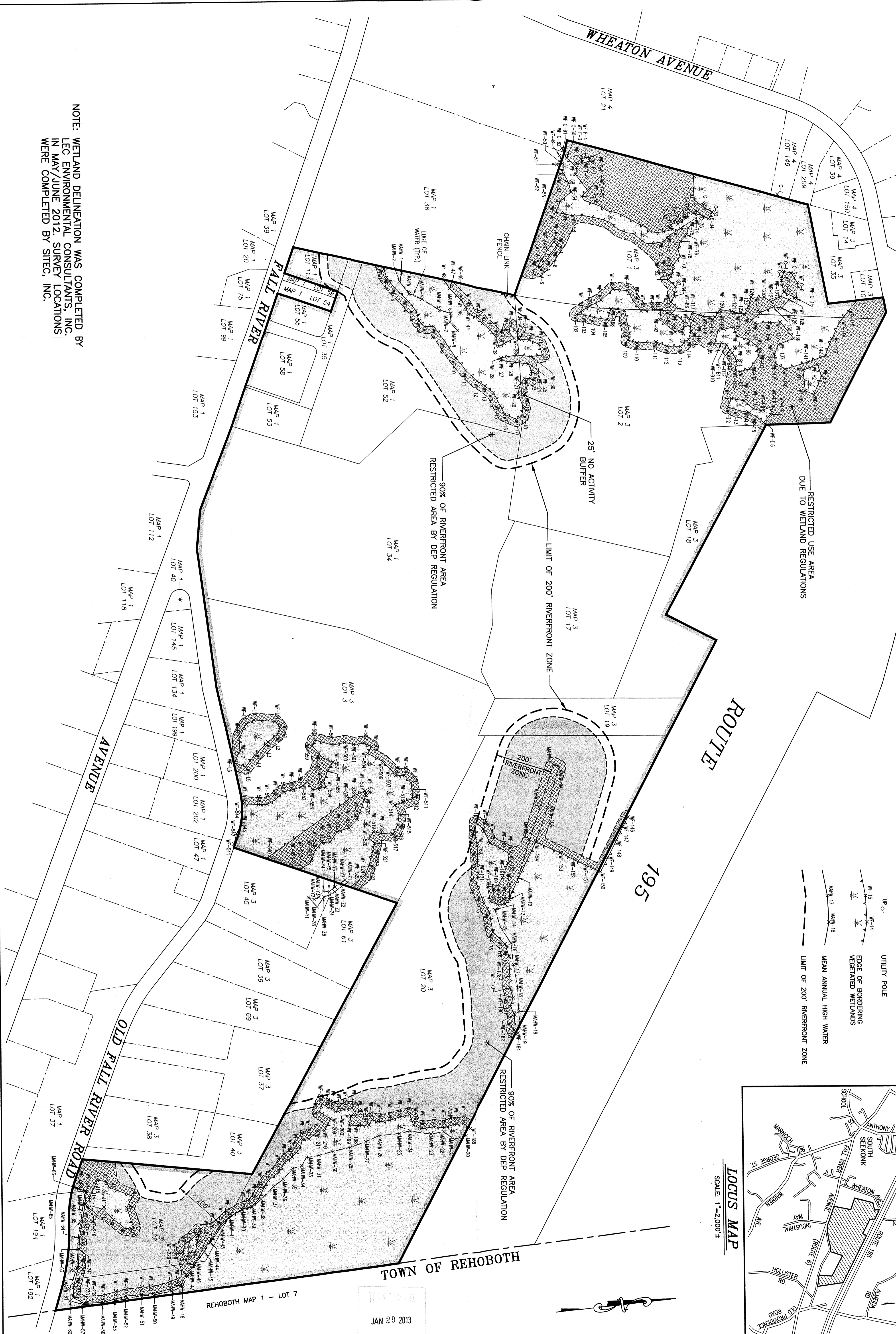
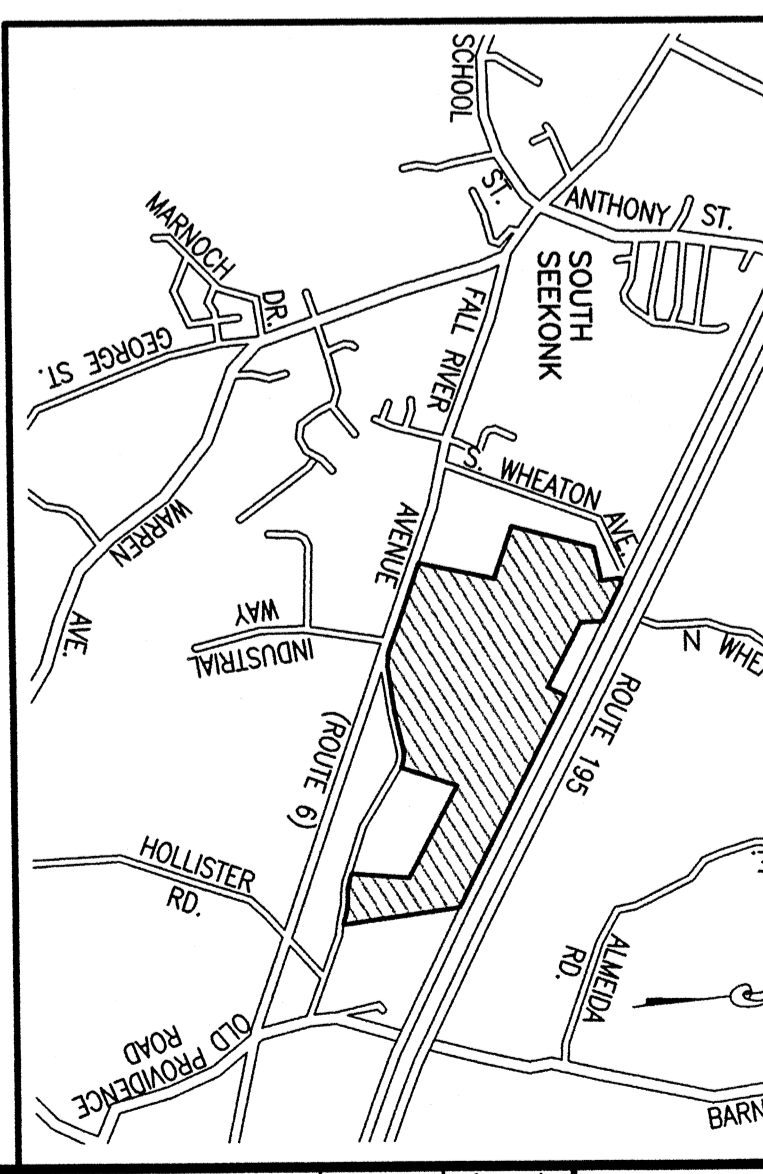


NOTE: WETLAND DELINEATION WAS COMPLETED BY LEC ENVIRONMENTAL CONSULTANTS, INC. IN MAY/JUNE 2012. SURVEY LOCATIONS WERE COMPLETED BY SITEC, INC.



- PROPERTY LINE
- UTILITY POLE
- EDGE OF BORDERING VEGETATED WETLANDS
- MEAN ANNUAL HIGH WATER
- LIMIT OF 200' RIVERFRONT ZONE



JAN 29 2013

SITEC
Civil and Environmental Engineering
Land Use Planning

SITEC, Inc.
449 Founcee Corner Road
Dorchester, MA 02747
(508) 998-2125
FAX (508) 998-7554

project: VENDITTI FAMILY, LP
FALL RIVER AVENUE
SEEKONK, MASSACHUSETTS

client: VENDITTI FAMILY, LP

drawing title: DEVELOPMENT RESTRICTION PLAN

scale: 1" = 150' ±
date: JUNE 11, 2012
drawn: NAD
checked: SDG
approved: SDG

sheet 1 of 1
drawing number: DRP-1

No.	Date	Revision Description	Chkd. by	Appvd. by

