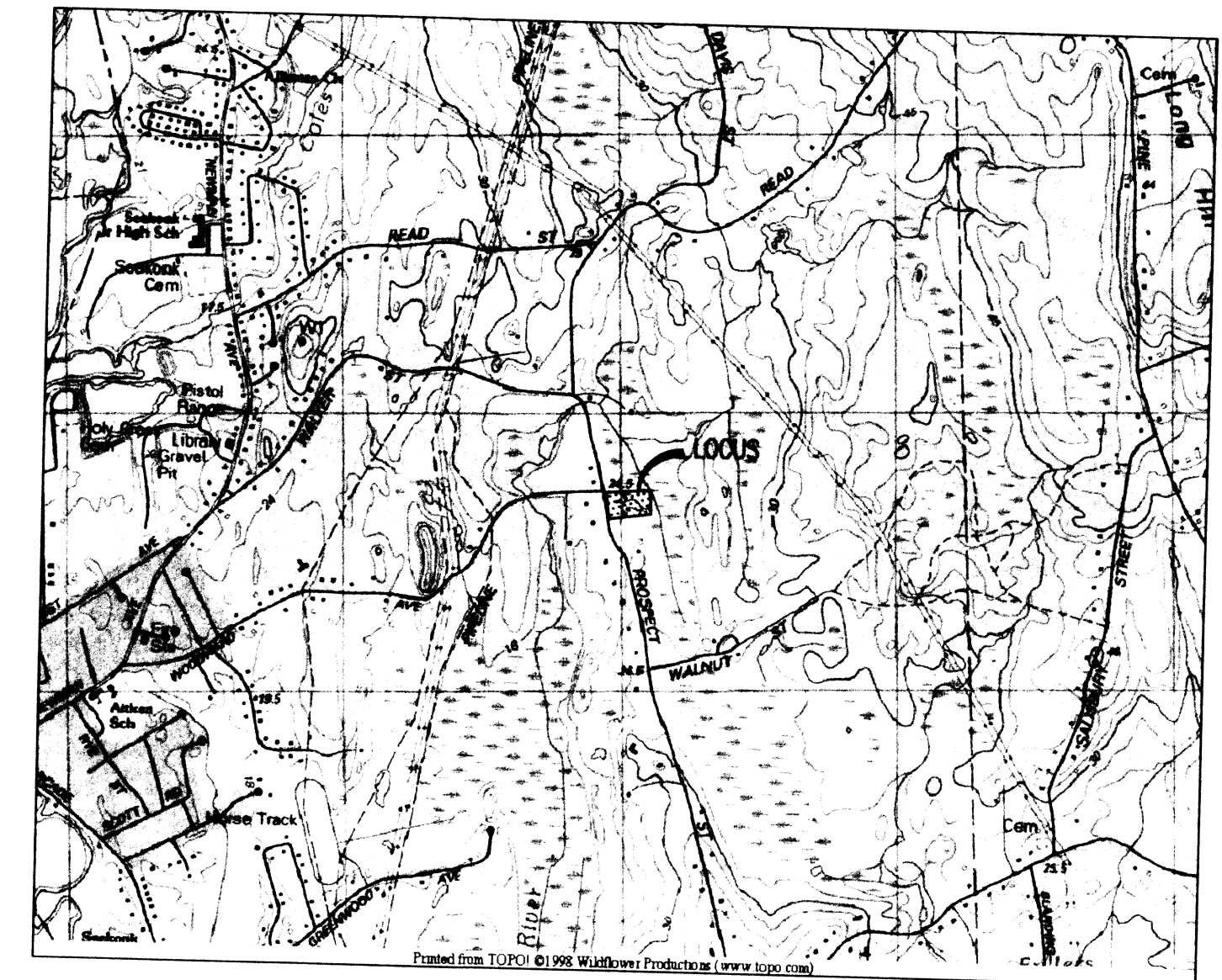
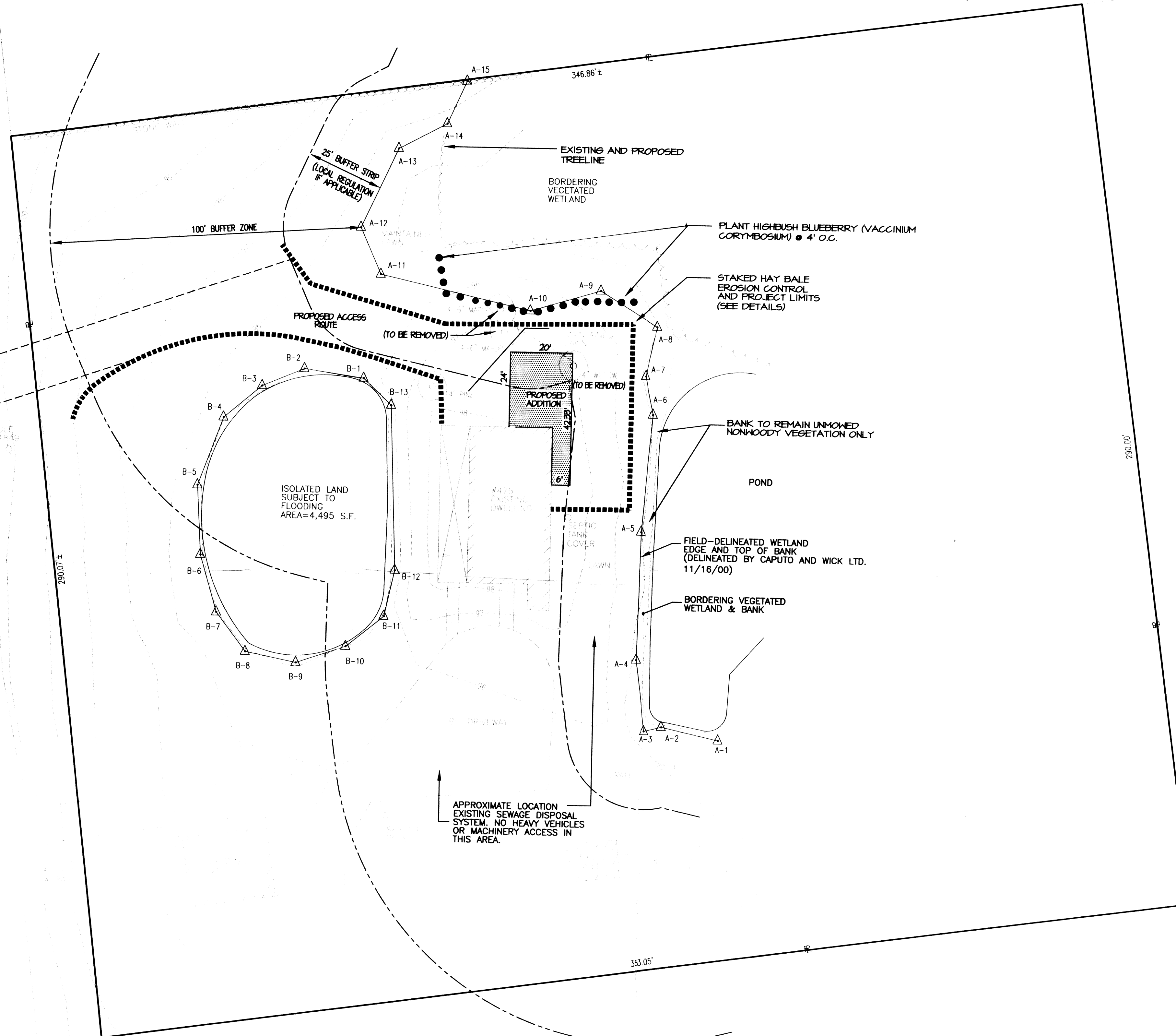


SCALE 1" = 20'

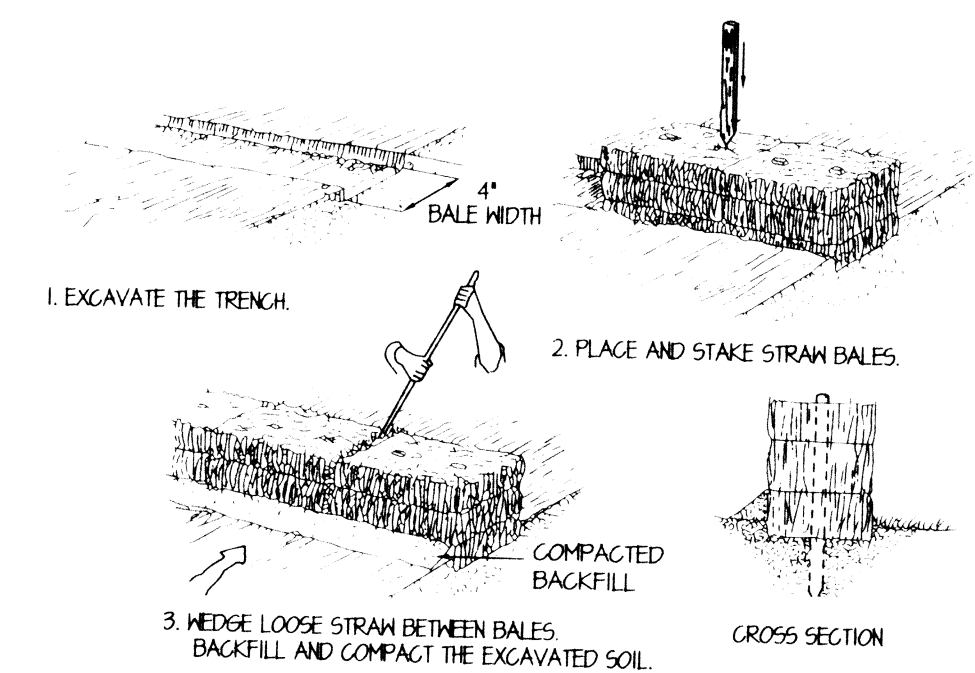
OBTAIN ACCESS PERMIT FROM SEEKONK HIGHWAY DEPARTMENT PRIOR TO CONSTRUCTION

**BENCH MARK**  
TOP HYDRANT SPINDLE  
ELEV. = 104.26

PROSPECT STREET



LOCATION MAP  
1" = 2000'



HAY BALE DETAIL

**EROSION AND SEDIMENTATION CONTROL**

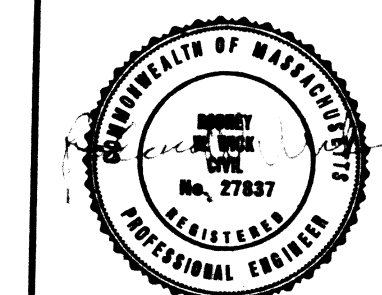
- 1) ALL PERIMETER EROSION AND SEDIMENTATION CONTROLS MUST BE INSTALLED PRIOR TO THE COMMENCEMENT OF EARTHWORK.
- 2) ACCESSIBLE RESERVES OF HAY BALES AND STAKES ARE TO BE MAINTAINED ON SITE FOR ROUTINE MAINTENANCE AND IN THE EVENT OF UNANTICIPATED PROBLEMS REQUIRING EMERGENCY RESPONSE.
- 3) HAY BALES SHOULD BE INSTALLED IN ACCORDANCE WITH THE DETAILS PROVIDED.
- 4) NO WORK IS TO OCCUR ON THE WETLAND SIDE OF THE PERIMETER EROSION AND SEDIMENTATION CONTROLS. ALL PERIMETER CONTROLS SERVE AS THE PROJECT LIMIT OF DISTURBANCE.
- 5) NO STONES, BRUSH, CONSTRUCTION DEBRIS, LITTER, OR OTHER MATERIALS ARE TO BE DEPOSITED ON THE WETLAND SIDE OF THE EROSION AND SEDIMENTATION CONTROLS.
- 6) ALL DISTURBED SOILS NOT DESIGNATED FOR OTHER SURFACE TREATMENT ARE TO BE LOANED AND SEEDED IMMEDIATELY FOLLOWING FINAL GRADING.
- 7) APPROPRIATE PRECAUTIONS SHOULD BE TAKEN TO PREVENT THE TRANSPORT OF SOIL OFF SITE FROM CONSTRUCTION EQUIPMENT.
- 8) ALL PERIMETER EROSION AND SEDIMENTATION CONTROLS MUST BE PROPERLY MAINTAINED AND MUST REMAIN IN PLACE UNTIL THE SOILS HAVE BEEN STABILIZED TO THE SATISFACTION OF THE ENGINEER AND THE SEEKONK CONSERVATION COMMISSION.

**NOTE:**  
LOT LINES SHOWN ARE APPROXIMATE AND DO NOT REPRESENT AN ACTUAL BOUNDARY SURVEY

69-458  
Received

FFR 2 6 2001

Con. Comm.  
ASSESSORS PLAT 22 - LOT 9



**SITE PLAN**  
PREPARED FOR  
GREGORY T. NOELTE  
475 PROSPECT STREET  
SEEKONK, MASSACHUSETTS

**CAPUTO AND WICK LTD.** DATE 1/24/01  
1150 PAWTUCKET AVE. RUMFORD, R.I. 02916 SHEET  
401-434-8880 1

REVISED 2/26/01