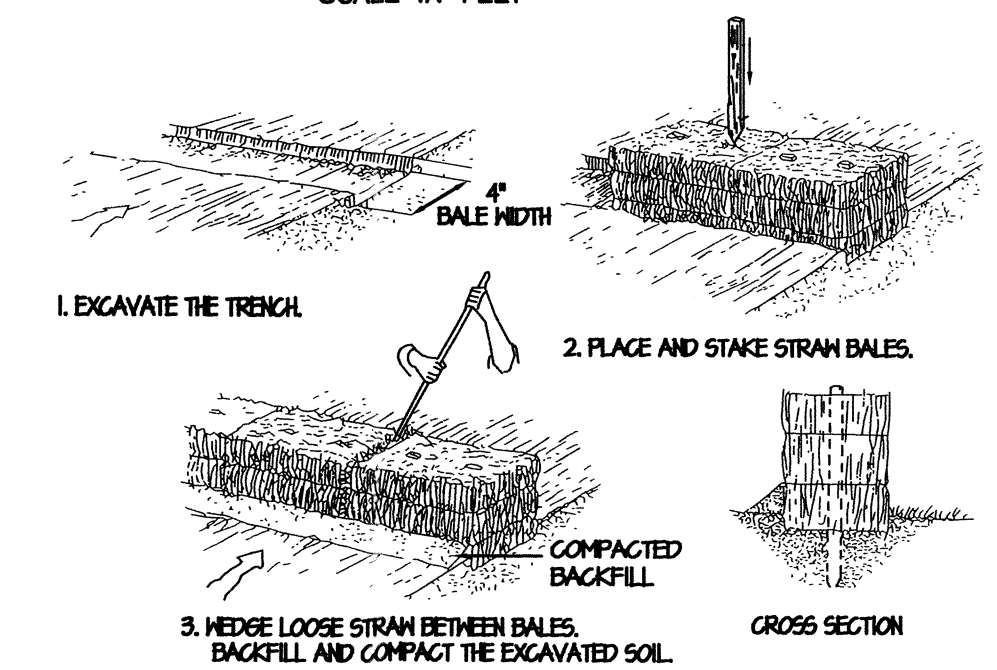


LOCATION MAP

0 2000
SCALE IN FEET



HAY BALE DETAIL

EROSION AND SEDIMENTATION CONTROL

- 1) ALL PERIMETER EROSION AND SEDIMENTATION CONTROLS MUST BE INSTALLED PRIOR TO THE COMMENCEMENT OF EARTHWORK.
- 2) ACCESSIBLE RESERVES OF HAY BALES AND STAKES ARE TO BE MAINTAINED ON SITE FOR ROUTINE MAINTENANCE AND IN THE EVENT OF UNANTICIPATED PROBLEMS REQUIRING EMERGENCY RESPONSE.
- 3) HAY BALES SHOULD BE INSTALLED IN ACCORDANCE WITH THE DETAILS PROVIDED.
- 4) NO WORK IS TO OCCUR ON THE WETLAND SIDE OF THE PERIMETER EROSION AND SEDIMENTATION CONTROLS. ALL PERIMETER CONTROLS SERVE AS THE PROJECT LIMIT OF DISTURBANCE.
- 5) NO STONES, BRUSH, CONSTRUCTION DEBRIS, LITTER, OR OTHER MATERIALS ARE TO BE DEPOSITED ON THE WETLAND SIDE OF THE EROSION AND SEDIMENTATION CONTROLS.
- 6) ALL DISTURBED SOILS NOT DESIGNATED FOR OTHER SURFACE TREATMENT ARE TO BE LOAMED AND SEEDED IMMEDIATELY FOLLOWING FINAL GRADING.
- 7) APPROPRIATE PRECAUTIONS SHOULD BE TAKEN TO PREVENT THE TRANSPORT OF SOIL OFF SITE FROM CONSTRUCTION EQUIPMENT.
- 8) ALL PERIMETER EROSION AND SEDIMENTATION CONTROLS MUST BE PROPERLY MAINTAINED AND MUST REMAIN IN PLACE UNTIL THE SOILS HAVE BEEN STABILIZED TO THE SATISFACTION OF THE ENGINEER AND THE SEEKONK CONSERVATION COMMISSION.

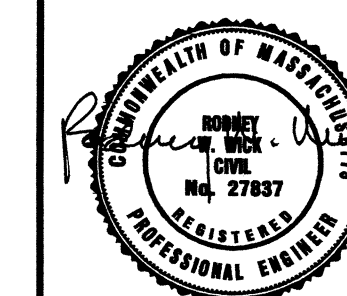
NOTE:

SEWAGE DISPOSAL SYSTEM DESIGNED BY RICHARD C. BELLAVANCE, R.S. 740

69-528

ASSESSORS PLAT 16 - LOT 165 & PART OF LOT 31

Received
AUG 04 2003
Con. Comm.



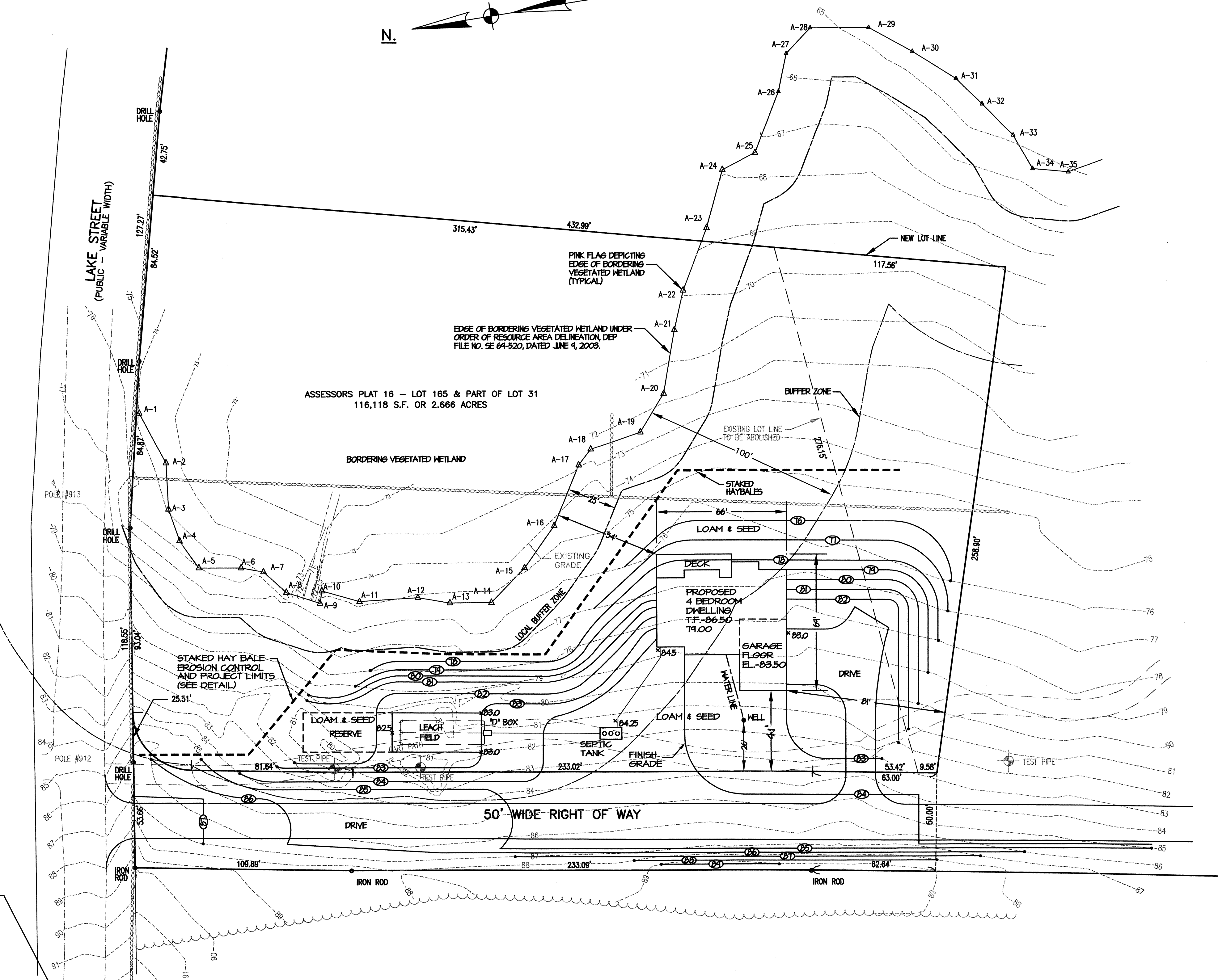
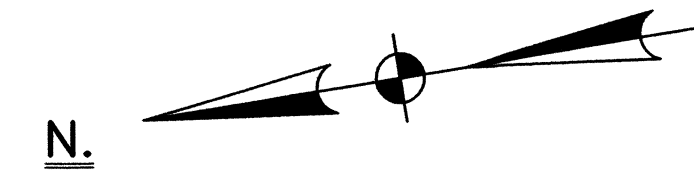
SITE PLAN
PREPARED FOR
ROBERT J. HARPER, JR.
LAKE STREET
SEEKONK, MASSACHUSETTS

CAPUTO AND WICK LTD.

1150 PAWTUCKET AVE.
RUMFORD, R.I. 02916
401-434-8880

DATE
JULY 31, 2003

SHEET
1



BENCH MARK
SPIKE IN POLE #911
ELEV. = 45.06 (MSL)

PLAN
SCALE: 1" = 30'