

PLAT 26 - PART OF LOT 1
H. CHARLES TAPALIAN

PLAT 26 - LOT 107
LEDGEMONT ASSOCIATES, INC.

PLAT 27 - LOT 39
CARATUNK WILDLIFE REFUGE TRUST

NEW ENGLAND POWER
COMPANY EASEMENT
125' WIDE EASEMENT
ALGONQUIN GAS TRANSMISSION
COMPANY EASEMENT
80' WIDE EASEMENT

PLAT 26 - LOT 124
H. CHARLES TAPALIAN

LOT 1
62,689 S.F. OR 1.44 ACRES

LOT 2
77,453 S.F. OR 1.77 ACRES

LOT 3
182,034 S.F. OR 4.18 ACRES

BENCH MARK
TOP OF CONCRETE NAIL
STATION 16+68.84
ELEV. = 146.42 MSL

122
IAN

5 - LOT 123
AND CASAVANT TRAVERS

LOT 15
62,807 S.F. OR 1.44 ACRES

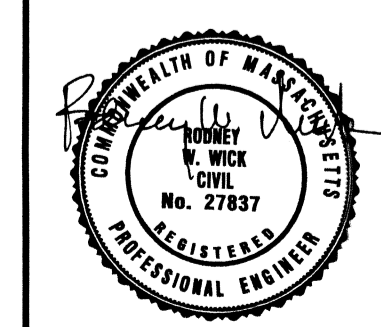
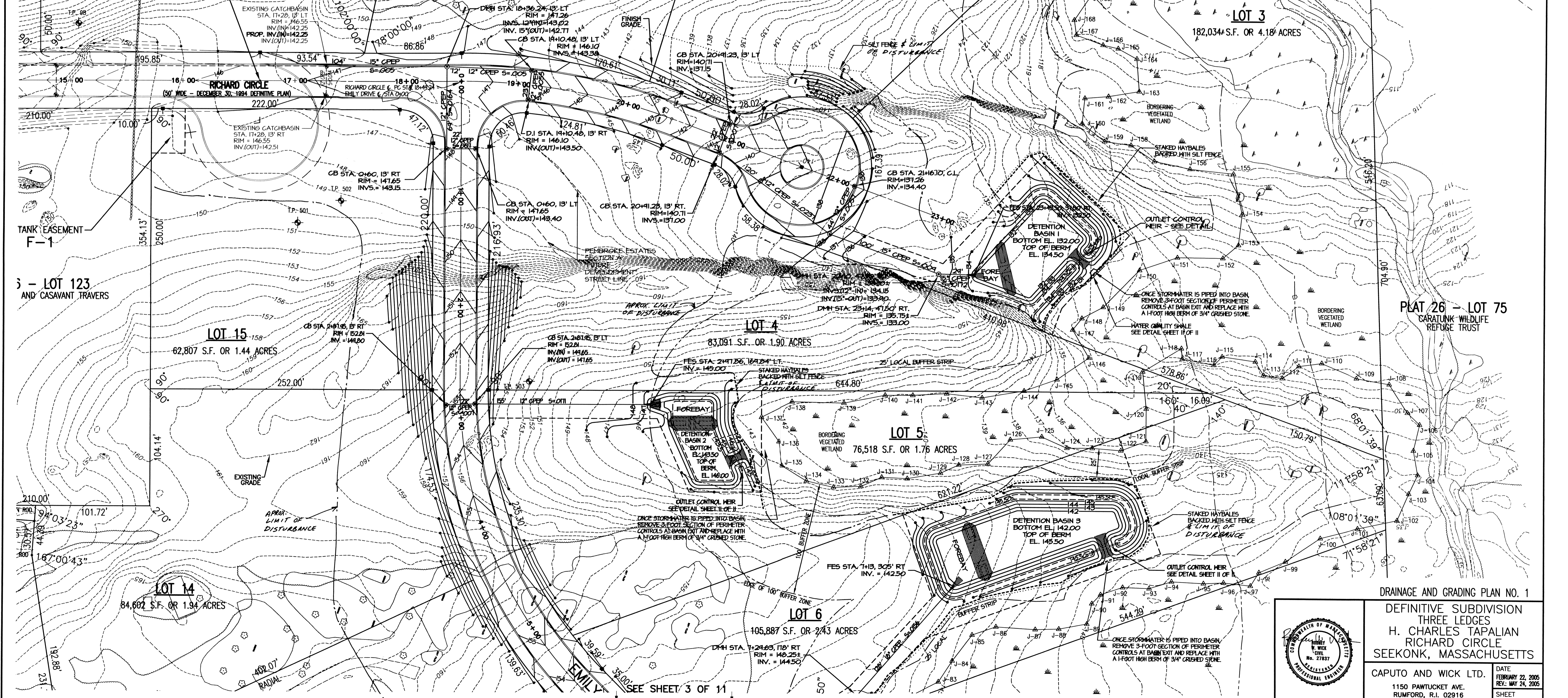
LOT 4
83,091 S.F. OR 1.90 ACRES

LOT 5
76,518 S.F. OR 1.76 ACRES

PLAT 26 - LOT 75
CARATUNK WILDLIFE
REFUGE TRUST

LOT 14
84,602 S.F. OR 1.94 ACRES

LOT 6
105,887 S.F. OR 2.43 ACRES



DRAINAGE AND GRADING PLAN NO. 1
DEFINITIVE SUBDIVISION
THREE LEDGES
H. CHARLES TAPALIAN
RICHARD CIRCLE
SEEKONK, MASSACHUSETTS
CAPUTO AND WICK LTD.
1150 PAWTUCKET AVE.
RUMFORD, R.I. 02916
401-434-8880
DATE: FEBRUARY 22, 2005
REV: MAY 24, 2005
SHEET 2 OF 11

rev. 9/10/05

SEE SHEET 3 OF 11