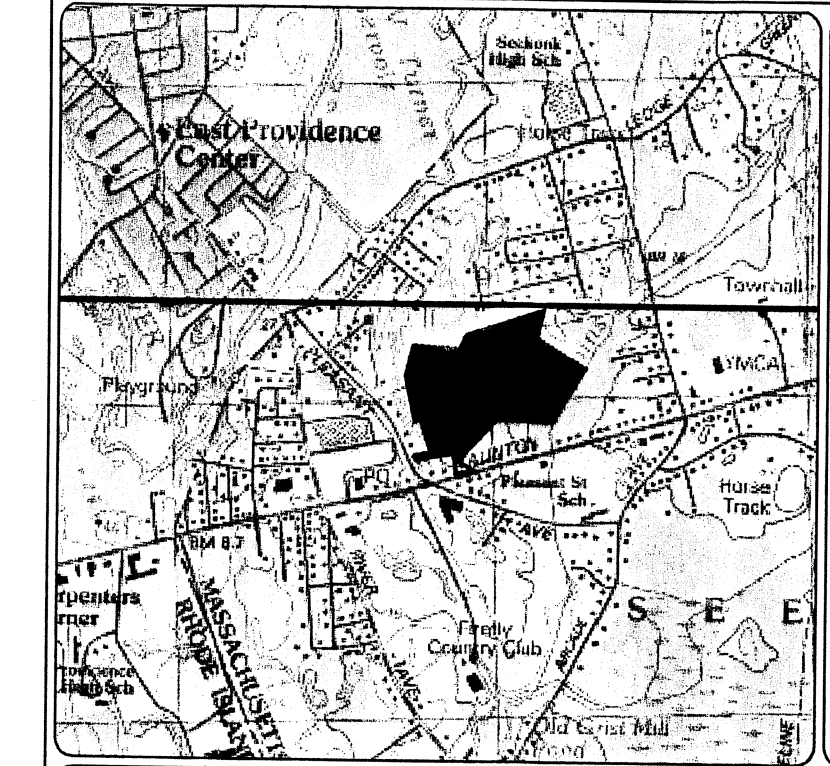
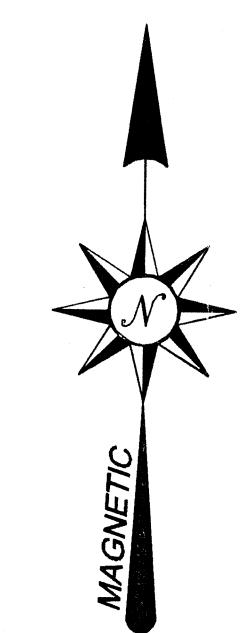
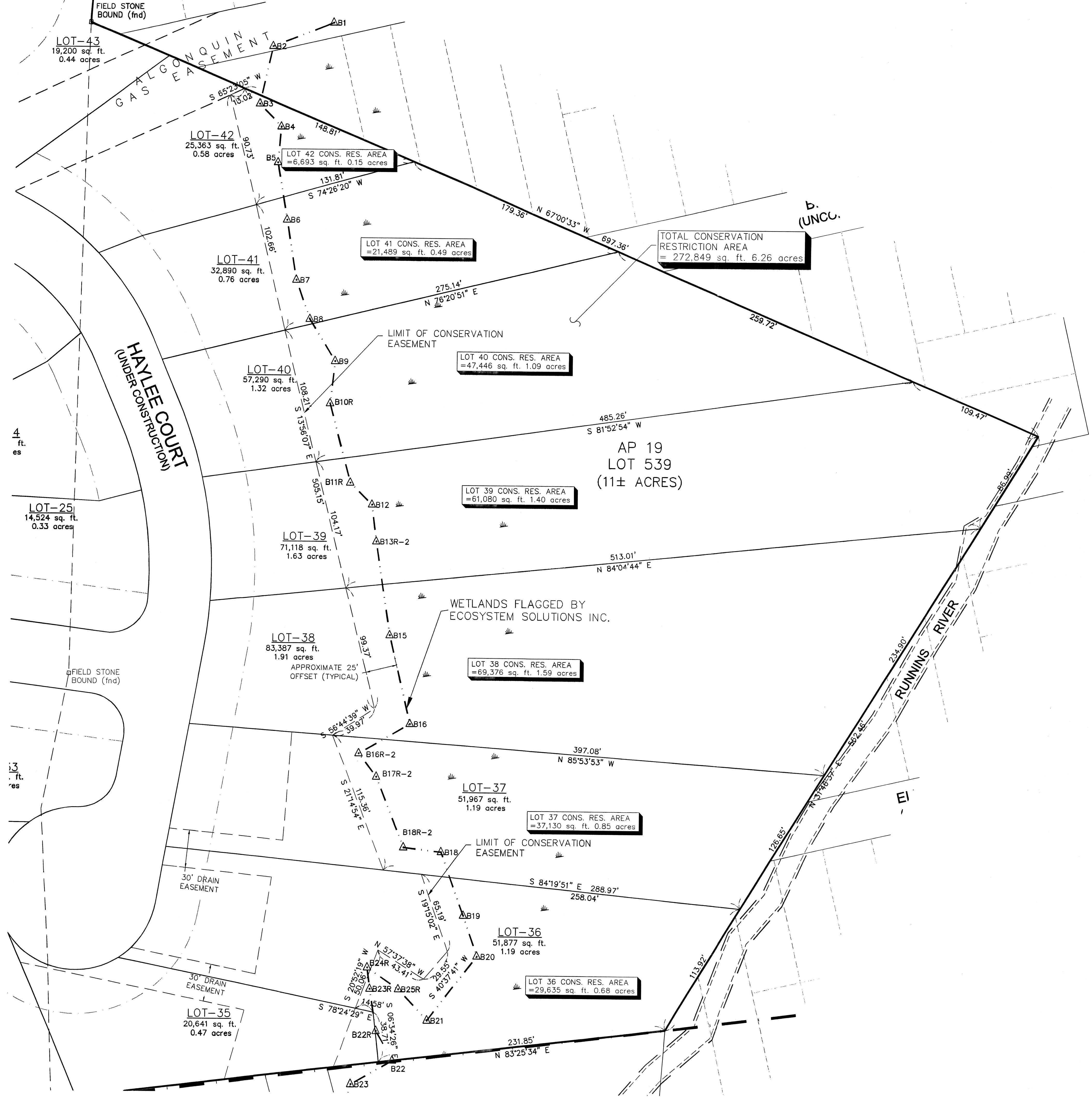


i:\06-050-Taunton Ave - Pleasant Street\CADD\06-050 FORM A LOTS 47-52.dwg 11/11/2008 3:13:28 PM EST



LOCATION (NOT TO SCALE) MAP

REGISTRY USE ONLY

NOTES:

- OWNER: FALL RIVER AVENUE DEVELOPMENT PARTNERS, LLC
1539 FALL RIVER AVENUE
SEEKONK, MA 02771
- APPLICANT: FALL RIVER AVENUE DEVELOPMENT PARTNERS, LLC
1539 FALL RIVER AVENUE
SEEKONK, MA 02771
- TITLE REFERENCE: DEED BOOK 1 129 PAGE 330 (LOT 470)
BRISTOL COUNTY REGISTRY OF DEEDS NORTHERN DISTRICT.
- SITE SHOWN IS LOCATED IN ZONING DISTRICT "R-1"
MINIMUM AREA = 14,400 S.F.
MINIMUM LOT WIDTH AT STREET LINE = 100'
MINIMUM LOT WIDTH AT REQ. FRONT YARD = 120'
MINIMUM FRONT YARD = 35'
MINIMUM REAR YARD = 25'
MINIMUM SIDE YARDS = 15'+5' FOR EACH STY. OVER 1
- NO CONSTRUCTION TO OCCUR WITHIN CONSERVATION RESTRICTION AREA.

"I HEREBY CERTIFY THAT THIS PLAN HAS BEEN PREPARED IN CONFORMANCE WITH THE RULES AND REGULATIONS OF THE REGISTERS OF DEEDS OF THE COMMONWEALTH OF MASSACHUSETTS."

PREPARER _____ DATE _____

"I HEREBY CERTIFY THAT THIS PLAN HAS BEEN PREPARED IN ACCORDANCE WITH THE MASSACHUSETTS BOARD OF REGISTRATION OF PROFESSIONAL LAND SURVEYORS STANDARDS."

PROFESSIONAL LAND SURVEYOR _____ DATE _____

"I HEREBY CERTIFY THAT THE PROPERTY LINES SHOWN ON THIS PLAN ARE THE LINES DIVIDING EXISTING OWNERSHIPS, AND THE LINES OF THE STREETS AND WAYS SHOWN ARE THOSE OF PUBLIC OR PRIVATE STREETS OR WAYS ALREADY ESTABLISHED, AND THAT NO NEW LINES FOR DIVISION OF EXISTING OWNERSHIP OR FOR NEW STREETS OR WAYS ARE SHOWN. (CHAPTER 380, ACTS OF 1966)"

PROFESSIONAL LAND SURVEYOR _____ DATE _____

Received
DEC 08 2008
Comm. Comm.

GRAPHIC SCALE
1 INCH = 40 FEET
69-631

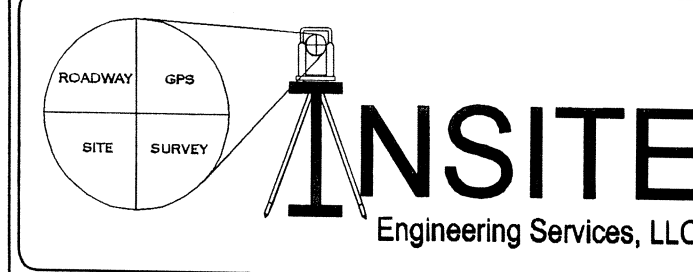
CONSERVATION RESTRICTION PLAN

"BANNA ESTATES"
HAYLEE COURT, SEEKONK, MA 02771
ASSESSORS MAP 19 LOT 539 - (SUBDIVISION LOTS 42-36)
For: FALL RIVER AVENUE DEVELOPMENT PARTNERS, LLC
1539 FALL RIVER AVENUE, SEEKONK, MA 02771

Job # 06-050 Scale: 1"=40' Drawn By: CEA Date: NOV. 11, 2008

PROFESSIONAL SEAL

Revised:



PROFESSIONAL ENGINEERS AND LAND SURVEYORS
INSITE PROFESSIONAL COMPLEX, SUITE 1
1539 FALL RIVER AVENUE
SEEKONK, MA 02771
PHONE: (508) 336-4500
FAX: (508) 336-4558

SHEET
1
OF 1