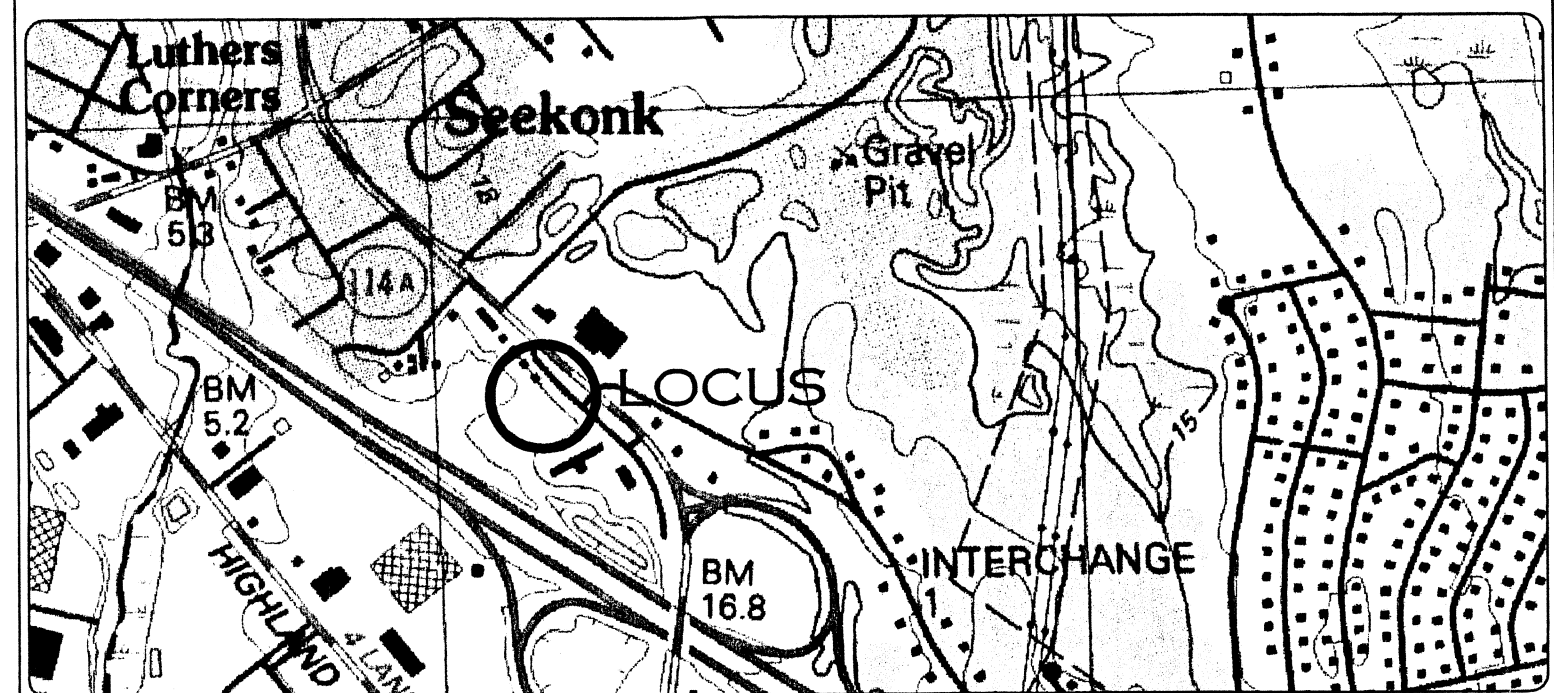
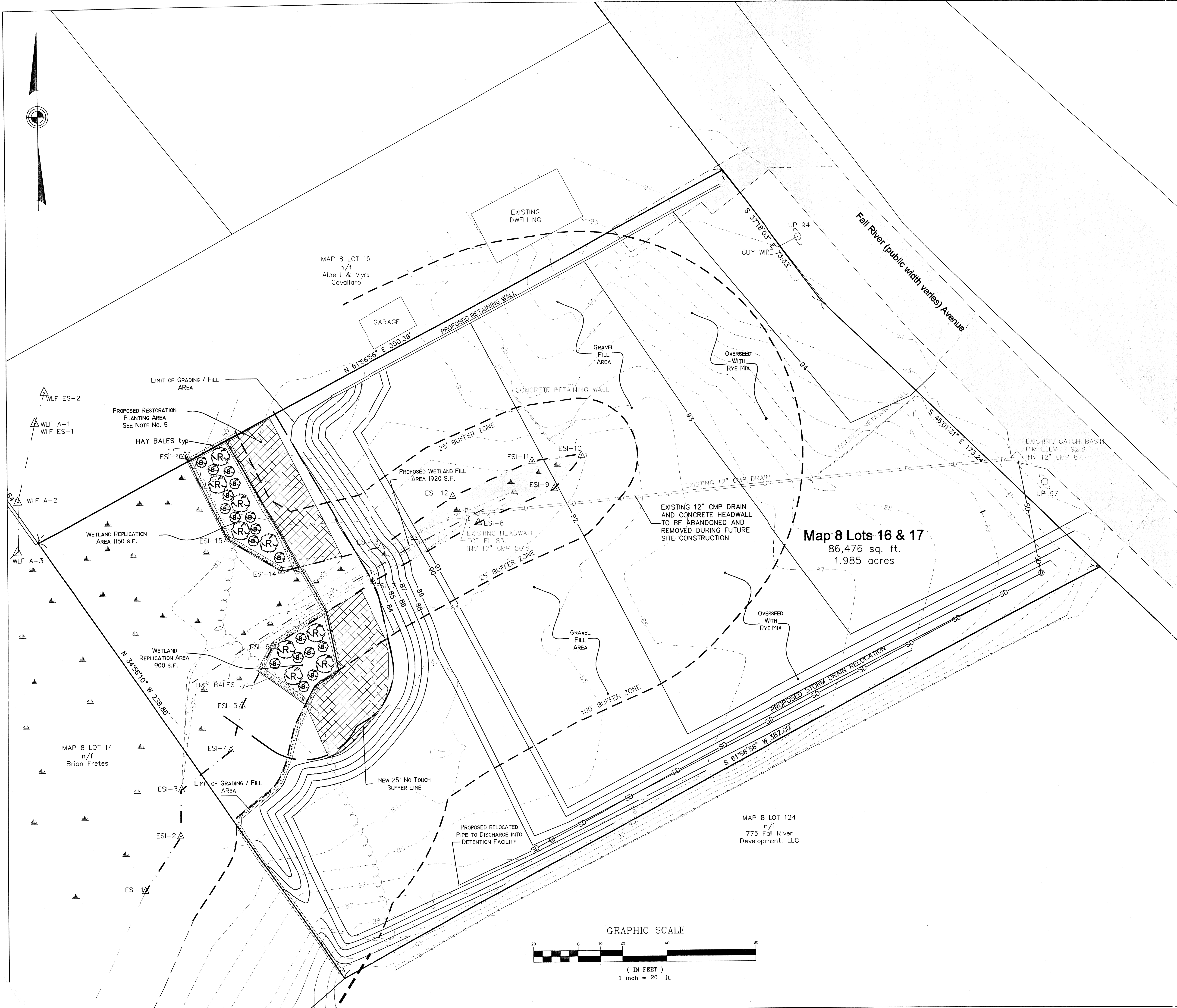


LOCATION (NOT TO SCALE) MAP

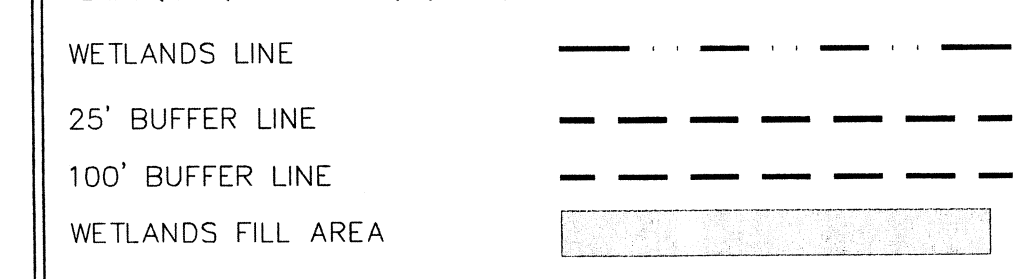


NOTES

1. SITE IS DELINEATED AS LOTS 16 & 17 ON TOWN OF SEEKONK ASSESSORS MAP 8.
 2. OWNER OF LOCUS: KOOLOIAN REALTY, LP
143 SMITHFIELD RD. NO. SMITHFIELD R.I. 02904
 3. TITLE REFERENCE: BOOK 6295 PAGE 188 AND BOOK 7466 PAGE 76
 4. RESOURCE AREA DELINEATION BY ECOSYSTEM SOLUTIONS, INC.
 5. SEE "PROPOSED RESTORATION PLAN FOR KOOLOIAN REALTY, 143 SMITHFIELD, RI, NORTH PROVIDENCE, RI DATED MAY 6, 2009 AND REVISED MAY 26, 2009. PLAN CAN BE FOUND AT THE SEEKONK CONSERVATION COMMISSION.
 6. THE 25-FOOT BUFFER ZONE DELINEATES THE LIMITS OF DISTURBANCE AND ALL FUTURE ACTIVITIES
- THE 50-FOOT WETLAND BUFFER DELINEATES THE LIMITS OF ALL WALL STRUCTURES AS STATED WITH THE TOW OF SEEKONK CONSERVATION COMMISSION REGULATIONS AMENDED MARCH, 2003

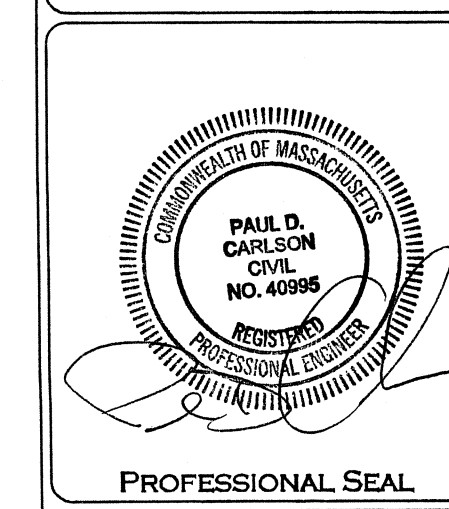


WETLAND LEGEND



Received
OCT 19 2009
Con. Comm.

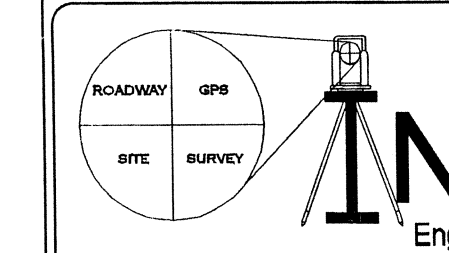
NOTICE OF INTENT PLAN *SE64-667*



"KOOLOIAN PROPERTY"
767 & 761 FALL RIVER AVENUE, SEEKONK MA. 02771
ASSESSORS MAP 48 LOTS 16 & 17

Applicant: KOOLOIAN REALTY
143 SMITHFIELD ROAD, NO. SMITHFIELD R.I. 02904

JOB # 09-013	SCALE: 1" = 20'	DRAWN BY: SCA	DATE: JUNE 30, 2009
REVISED: OCT. 19, 2009 PROPOSED GRADING			



PROFESSIONAL ENGINEERS
AND LAND SURVEYORS
INSITE PROFESSIONAL COMPLEX, SUITE 1
1539 FALL RIVER AVENUE
SEEKONK, MA 02771
PHONE: (508) 336-4500
FAX: (508) 336-4588

SHEET
1
OF 2

iver Avenue Seekonk - Kooloian\cadd\09-013-NOI BASE.dwg, NOI plan, 10/19/2009 4:51:09 PM