

LEGEND

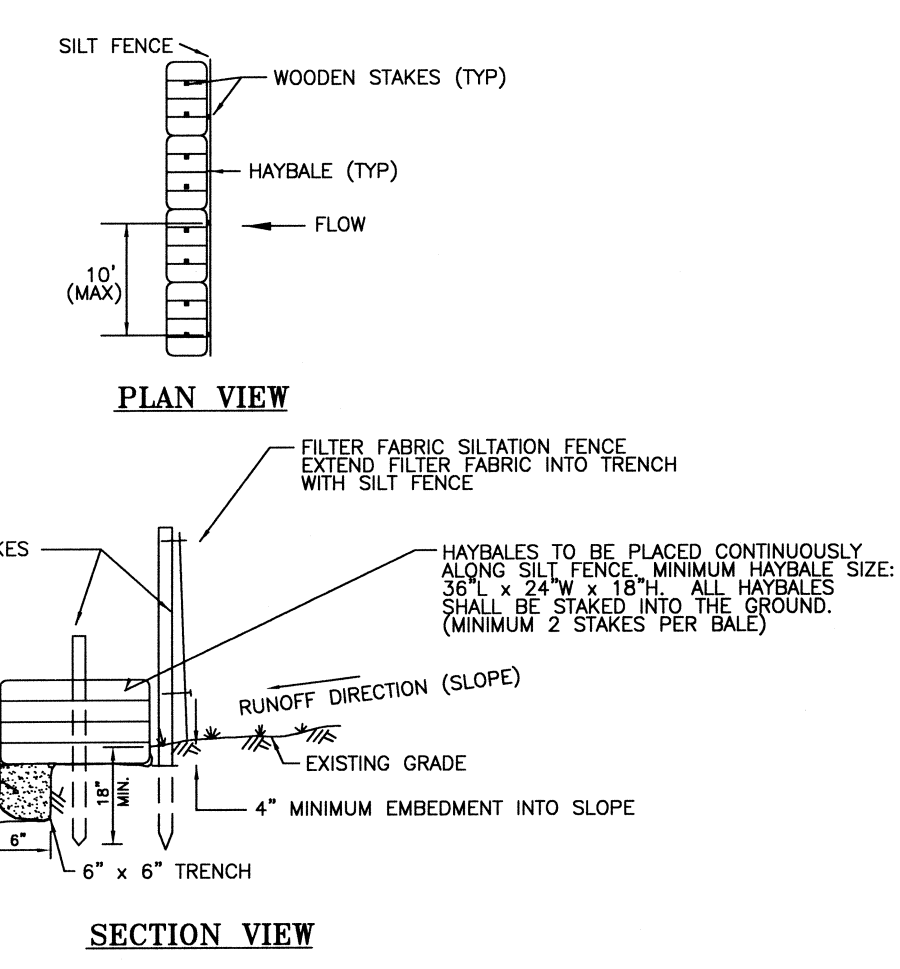
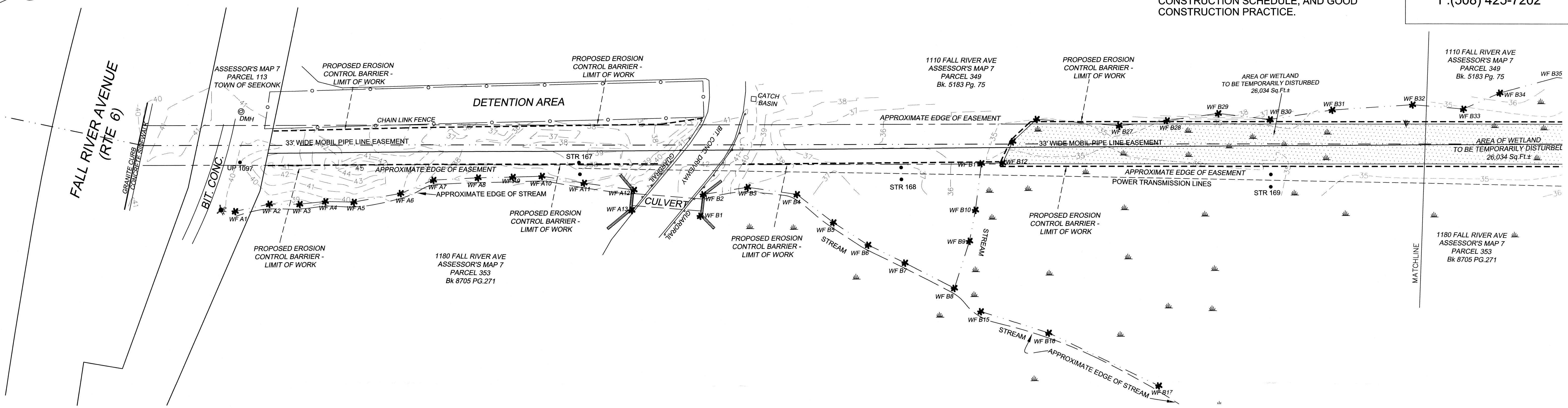
- BIT. CONC. BITUMINOUS CONCRETE
- CB EXISTING CATCH BASIN
- U.P. EXISTING UTILITY POLE
- D — EXISTING DRAIN LINE
- OHW — EXISTING OVERHEAD WIRES

- NOTES:**
- 1.) THIS PLAN IS FOR PERMITTING PURPOSES ONLY. THIS PLAN IS NOT FOR CONSTRUCTION.
 - 2.) ALL CONSTRUCTION, MATERIALS, TESTING, & CERTIFICATIONS OF THE EXISTING PIPELINE SHALL MEET THE REQUIREMENTS OF THE EXXON-MOBIL PIPELINE CORPORATION.
 - 3.) CONTRACTOR AND/OR OWNER SHALL PREPARE & INSTALL EROSION AND SEDIMENTATION CONTROLS TO MEET SPECIFIC REQUIREMENTS OF SITE CONDITIONS, CONSTRUCTION SCHEDULE, AND GOOD CONSTRUCTION PRACTICE.

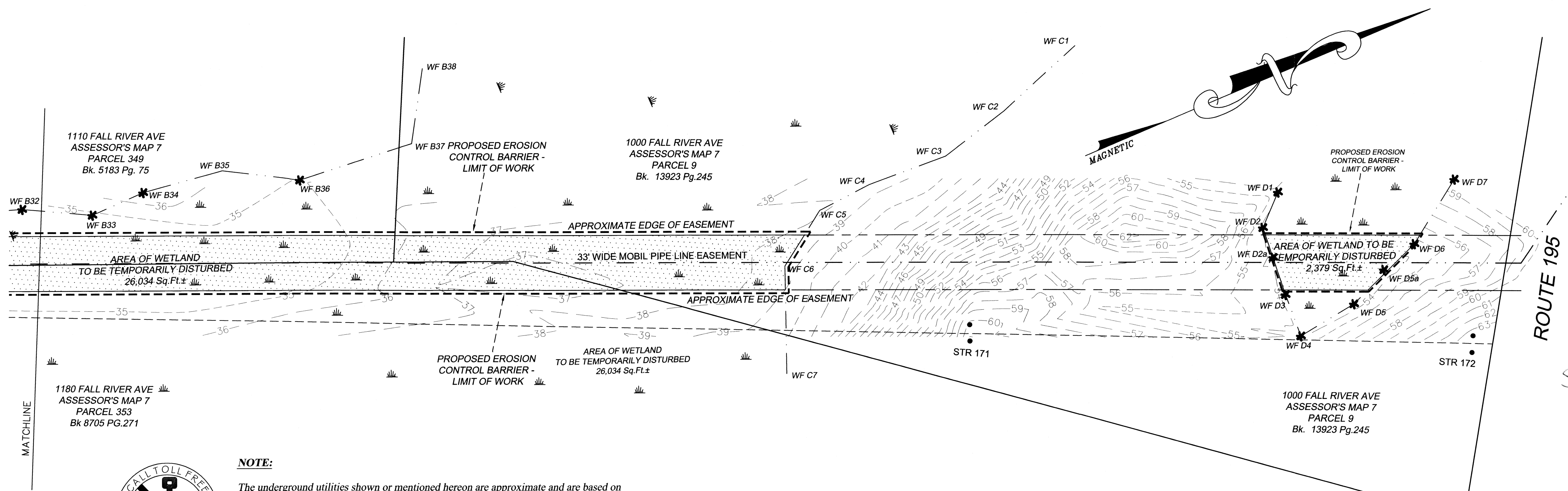
SUMMIT
Engineering & Survey INC
20 ONEIDA AVE.
WORCESTER, MA 01606
P: (508) 425-6353
F: (508) 425-7202

WETLAND PROTECTION ACT (C131 S40)

PRIOR TO INITIATING ANY ALTERATIONS (REMOVAL OF VEGETATION, EXCAVATIONS, GRADING, ETC.) WITHIN 100' OF WETLANDS (PONDS, BROOKS, SWAMPS, ETC.) OR WITHIN 200' OF AN AREA SUBJECT TO THE RIVER'S ACT (PERENNIALY FLOWING RIVER, BROOK OR STREAM), A REQUEST FOR DETERMINATION OF APPLICABILITY OR A NOTICE OF INTENT UNDER THE WETLANDS PROTECTION ACT (310 CMR 10.00) SHOULD BE FILED WITH THE TOWN'S CONSERVATION COMMISSION. LOCAL BYLAWS MAY ALSO APPLY.



**EROSION CONTROL BARRIER
SILT FENCE WITH HAY BALES**
SCALE: N.T.S.

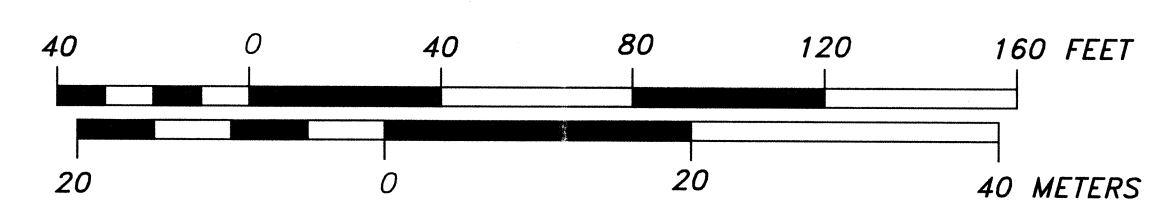


NOTE:

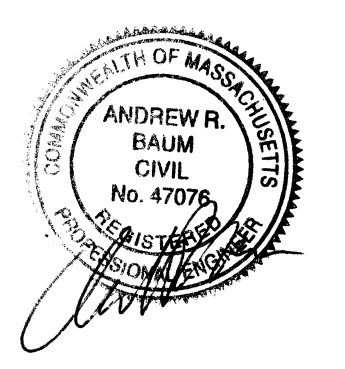
The underground utilities shown or mentioned hereon are approximate and are based on available municipal and/or utility company plans and records and have been located in the field where possible or plotted from information provided by others and may not be complete or correct in all details.

The actual location of these utilities must be verified by the contractor. The contractor must contact DIG SAFE, 1-888-344-7233, for location and marking of all existing utilities prior to any excavation.

www.digsafe.com



RECEIVED
MAY 24 2010
SEEKONK CONSERVATION



SITE PLAN
FALL RIVER AVENUE
IN
SEEKONK, MASSACHUSETTS
PREPARED FOR
EXXON-MOBIL PIPELINE
COMPANY

SCALE: 1" = 40'
DATE: 3-5-2010
JOB NO: SEEKONK2010
PLAN NO: SEEKONK-2010A
SHEET NO: 1 OF 1