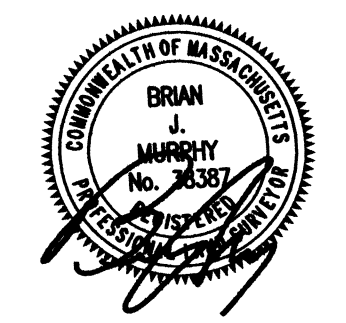


REVISIONS	
1	11/8/13 PER CEI COMMENTS



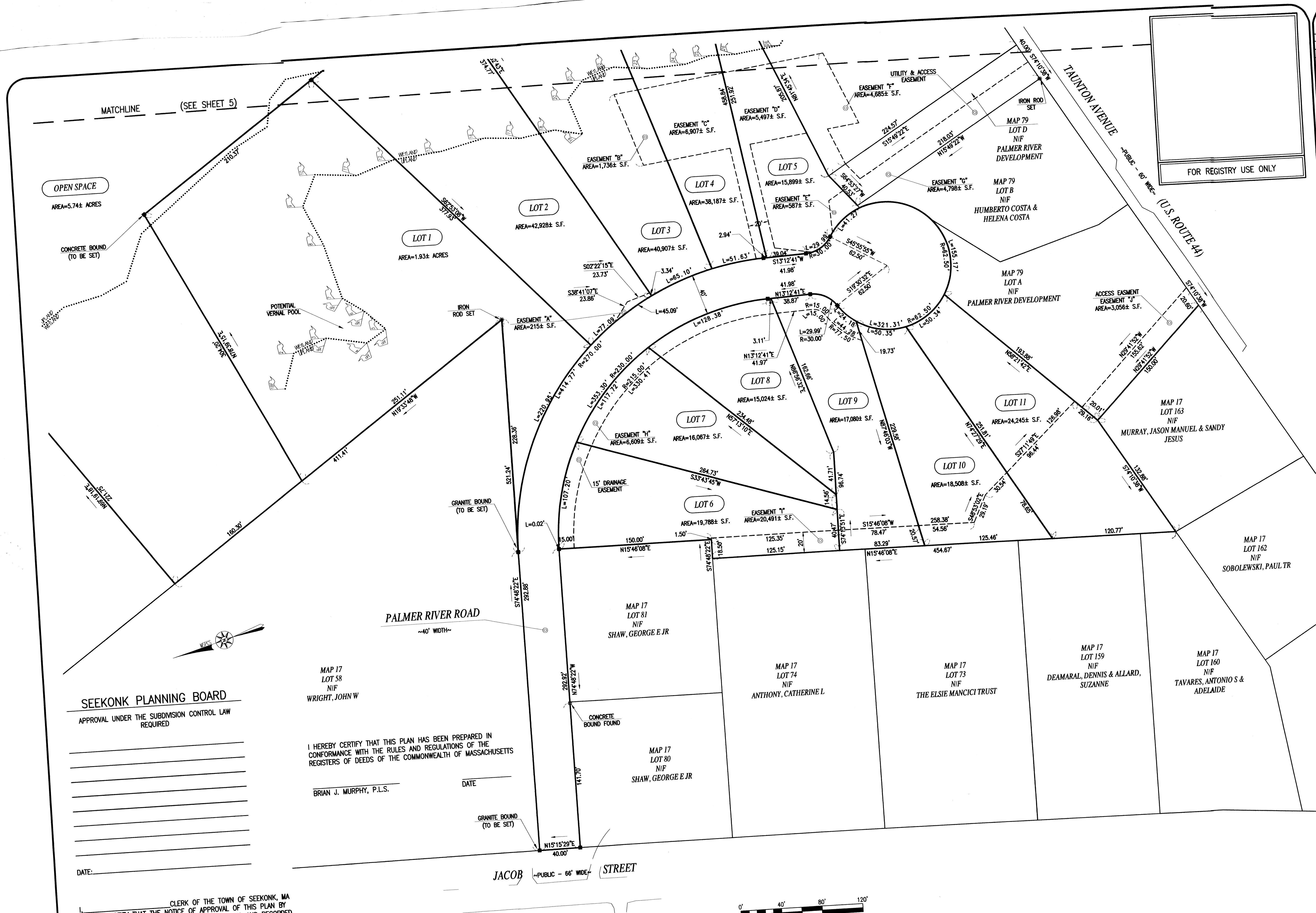
THOMPSONFARLAND
 PROFESSIONAL ENGINEERS / LAND SURVEYORS
 www.ThompsonFarland.com
 NEW BEDFORD, MA 02740 P. 508.717.3479
 (MAIN OFFICE) 390 COUNTY STREET, NEW BEDFORD, MA 02740
 TAUNTON | CAMBRIDGE | MARLBOROUGH

DRAWN BY: AEC
 DESIGNED BY: CAF
 CHECKED BY: CAF/BJM

DEFINITIVE SUBDIVISION PLAN
 JACOB HILL ESTATES
 ASSESSORS MAP 17 PART OF LOT 79
 SEEKONK, MASSACHUSETTS
 PREPARED PALMER RIVER DEVELOPMENT
 1960 FALL RIVER AVENUE

OCTOBER 22, 2013
 SCALE: 1"=40'
 JOB NO. 12-325
 LATEST REVISION:
 DECEMBER 16, 2013

LOTGING
 SHEET 6 OF 1



SEEKONK PLANNING BOARD
 APPROVAL UNDER THE SUBDIVISION CONTROL LAW
 REQUIRED

I HEREBY CERTIFY THAT THIS PLAN HAS BEEN PREPARED IN
 CONFORMANCE WITH THE RULES AND REGULATIONS OF THE
 REGISTERS OF DEEDS OF THE COMMONWEALTH OF MASSACHUSETTS
 _____ DATE
 BRIAN J. MURPHY, P.L.S.

CLERK OF THE TOWN OF SEEKONK, MA
 I HEREBY CERTIFY THAT THE NOTICE OF APPROVAL OF THIS PLAN BY
 THE SEEKONK PLANNING BOARD HAS BEEN RECEIVED AND RECORDED
 AT THIS OFFICE AND NO APPEAL WAS RECEIVED DURING THE TWENTY
 DAYS NEXT AFTER SUCH RECEIPT AND RECORDING OF SAID NOTICE.
 _____ DATE
 SIGNATURE/TITLE, TOWN CLERK

DATE: _____

MAP 17 LOT 58 NIF WRIGHT, JOHN W

DATE: _____
 SIGNATURE/TITLE, TOWN CLERK