

SEEKONK PLANNING BOARD

APPROVAL UNDER THE SUBDIVISION CONTROL LAW REQUIRED

\_\_\_\_\_  
\_\_\_\_\_  
\_\_\_\_\_  
\_\_\_\_\_  
\_\_\_\_\_  
\_\_\_\_\_  
DATE: \_\_\_\_\_

I HEREBY CERTIFY THAT THIS PLAN HAS BEEN PREPARED IN CONFORMANCE WITH THE RULES AND REGULATIONS OF THE REGISTERS OF DEEDS OF THE COMMONWEALTH OF MASSACHUSETTS

BRIAN J. MURPHY, P.L.S.

DATE \_\_\_\_\_

MAP 17  
LOT 15  
NIF

ROMAN CATHOLIC BISHOP OF FALL RIVER

MAP 17  
LOT 82  
NIF  
MAIO, FRANK

MAP 17  
LOT 104  
NIF  
SEEKONK WATER DISTRICT

MAP 17  
LOT 16  
NIF  
BLAIS, MARK A

\_\_\_\_\_  
CLERK OF THE TOWN OF SEEKONK, MA  
HEREBY CERTIFY THAT THE NOTICE OF APPROVAL OF THIS PLAN BY THE SEEKONK PLANNING BOARD HAS BEEN RECEIVED AND RECORDED AT THIS OFFICE AND NO APPEAL WAS RECEIVED DURING THE TWENTY DAYS NEXT AFTER SUCH RECEIPT AND RECORDING OF SAID NOTICE.

SIGNATURE/TITLE, TOWN CLERK

DATE \_\_\_\_\_

MAP 17  
LOT 20  
NIF  
FONTAINE, JO-ANNE  
DETROIA, MARK

MAP 17  
LOT 21  
NIF  
GOODHEART, MARK  
& LISABETH A

MAP 17  
LOT 22  
NIF  
BLOOM, WENDY  
& JUDITH TRS

MAP 17  
LOT 62  
NIF  
BLOOM, WENDY & JUDITH TRS

MAP 17  
LOT 70  
NIF  
PRESTON, TIMOTHY J

MAP 17  
LOT 58  
NIF  
WRIGHT, JOHN W

MAP 17  
LOT 81  
NIF  
SHAW, GEORGE E JR

MAP 17  
LOT 74  
NIF  
ANTHONY, CATHERINE L

MAP 17  
LOT 73  
NIF  
THE ELSIE MANCICI TRUST

MAP 17  
LOT 159  
NIF  
DEAMARAL, DENNIS  
& ALLARD, SUZANNE

MAP 17  
LOT 160  
NIF  
TAVARES, ANTONIO S  
& ADELAIDE

MAP 17  
LOT 161  
PEREIRA, ANTONIO  
L & MARIA T

MAP 17  
LOT 162  
NIF  
SOBOLEWSKI, PAUL TR

MAP 17  
LOT 163  
NIF  
MURRAY, JASON  
MANUEL & SANDY  
JESUS

MAP 79  
LOT A  
NIF  
PALMER RIVER  
DEVELOPMENT

MAP 79  
LOT B  
NIF  
HUMBERTO COSTA &  
HELENA COSTA

MAP 79  
LOT C  
NIF  
PALMER RIVER DEVELOPMENT

MAP 79  
LOT D  
NIF  
PALMER RIVER DEVELOPMENT

LOT 2

LOT 3

LOT 4

LOT 5

LOT 1

LOT 8

LOT 9

LOT 10

LOT 11

LOT 6

LOT 7

(SHEET 5) MATCHLINE  
(SHEET 6)

OPEN SPACE

APPROXIMATE WETLAND (GIS)

WETLAND LINE

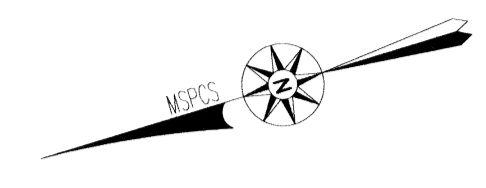
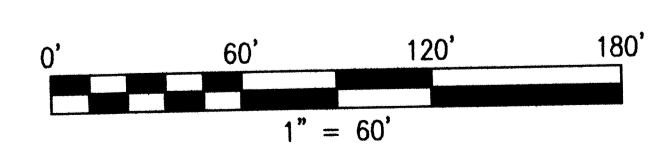
UTILITY & ACCESS EASEMENT

TAUNTON AVENUE

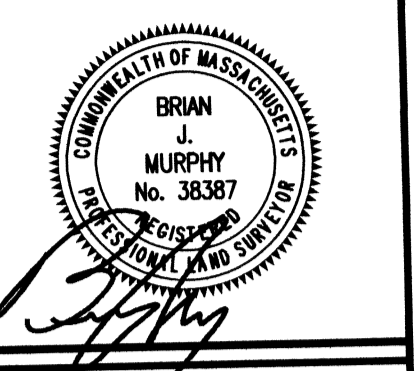
~PUBLIC - 60' WIDE~  
(U.S. ROUTE 44)

PALMER RIVER ROAD  
~40' WIDTH~

JACOB ~PUBLIC - 66' WIDE~ STREET



REVISIONS	
NO.	DATE
1	11/8/13 PER CEI COMMENTS



**THOMPSONFARLAND**  
PROFESSIONAL ENGINEERS // LAND SURVEYORS  
www.ThompsonFarland.com  
NEW BEDFORD, MA 02740 P.508.717.3478  
(MAIN OFFICE) 398 COUNTY STREET, NEW BEDFORD, MA 02740  
NEW BEDFORD | TAUNTON | CAMBRIDGE | MARLBOROUGH

DRAWN BY: AEC  
DESIGNED BY: CAF  
CHECKED BY: CAF/BJM

DEFINITIVE SUBDIVISION PLAN  
JACOB HILL ESTATES  
ASSESSORS MAP 17 PART OF LOT 79  
SEEKONK, MASSACHUSETTS  
PREPARED FOR:  
PALMER RIVER DEVELOPMENT  
1960 FALL RIVER AVENUE  
SEEKONK, MA 02771

OCTOBER 22, 2013  
SCALE: 1"=60'  
JOB NO. 12-325  
LATEST REVISION:  
DECEMBER 16, 2013

LOTTING INDEX  
SHEET 4 OF 14