



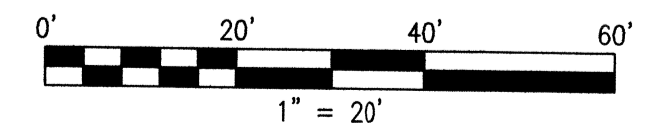
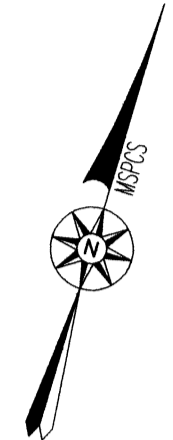
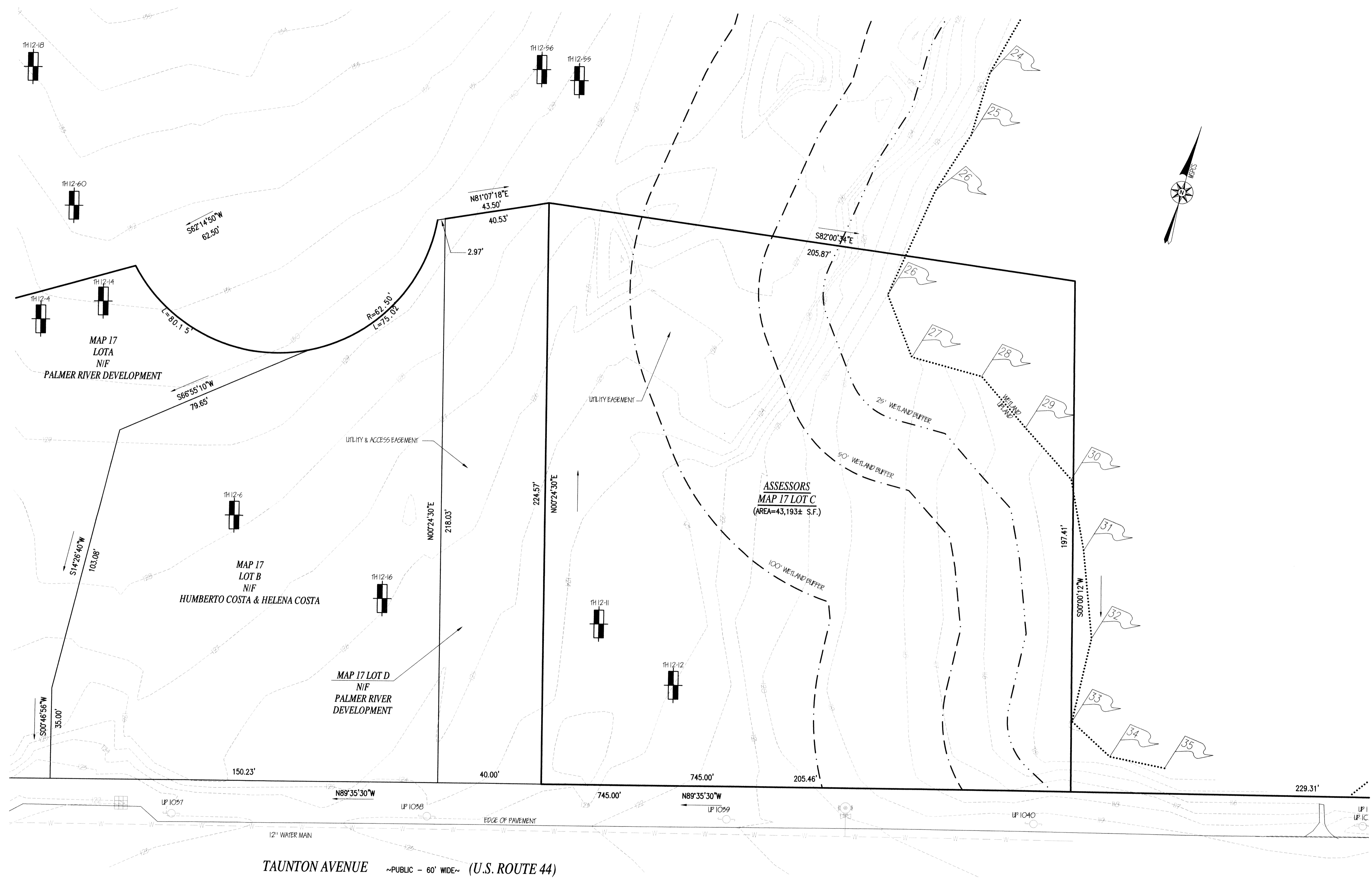
THOMPSONFARLAND
 PROFESSIONAL ENGINEERS // LAND SURVEYORS
 www.ThompsonFarland.com
 (MAIN OFFICE) 398 COUNTY STREET, NEW BEDFORD, MA 02740 P. 508.717.3479
 NEW BEDFORD | TAUNTON | CAMBRIDGE | MARLBOROUGH

DRAWN BY: AEC
 DESIGNED BY: AEC
 CHECKED BY: CAF

SITE PLAN
 TAUNTON AVENUE
 ASSESSORS MAP 17 LOT 79 C
 SEEKONK, MASSACHUSETTS
 PREPARED FOR:
 PALMER RIVER DEVELOPMENT
 1960 FALL RIVER AVENUE
 SEEKONK, MA 02771

NOVEMBER 12, 2013
 SCALE: 1"=20'
 JOB NO. 12-325
 LATEST REVISION:

EXISTING CONDITIONS



- NOTES:**
1. TOPOGRAPHIC AND PROPERTY LINE SURVEY PERFORMED BY THOMPSON FARLAND, INC. IN OCTOBER 2012.
 2. VERTICAL ELEVATIONS REFER TO AN ASSUMED DATUM.
 3. WETLAND LINE DELINEATED BY ECOSYSTEM SOLUTIONS, INC. ON AUGUST 16, 2012 AND WAS APPROVED BY THE CONSERVATION COMMISSION.

FLOOD NOTE:
 BY GRAPHIC PLOTTING ONLY, THE PROPERTY DEPICTED ON THIS PLAN FALLS IN ZONE, AS SHOWN ON THE FLOOD INSURANCE RATE MAP 25005C0208F, DATED JULY 7, 2009.

TAUNTON AVENUE ~PUBLIC - 60' WIDE~ (U.S. ROUTE 44)