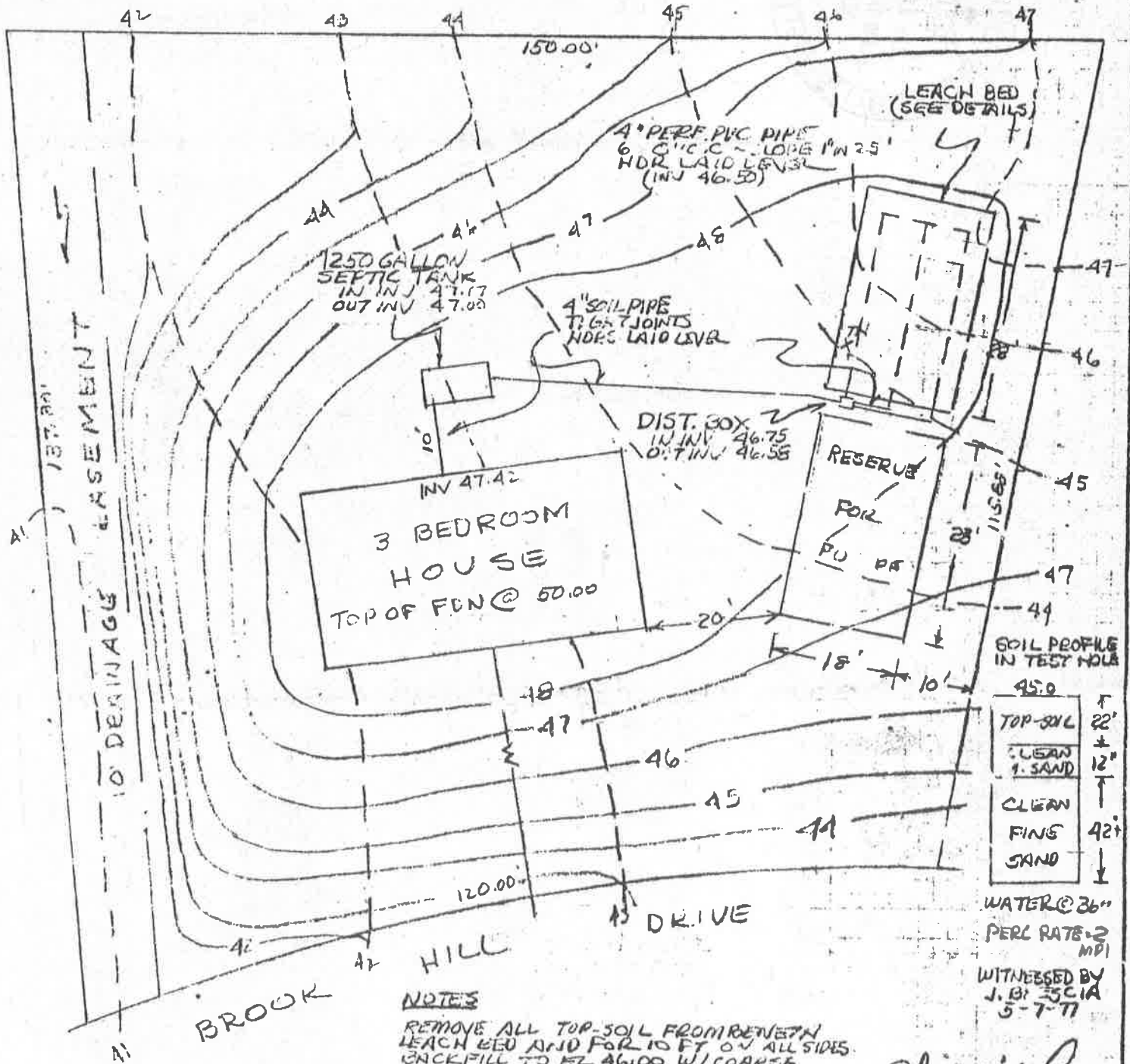


SEWAGE DISPOSAL PLAN
 LOT 40
 BROOK HILL ESTATES
 SEEKONK, MASS
 NOVEMBER, 1977
 SCALE 1" = 20'



SOIL PROFILE IN TEST HOLE

45.0	F
TOP SOIL	22'
1" CLEAN SAND	12"
CLEAN FINE SAND	42"
WATER @ 36"	
PERC RATE = 2 MPI	

NOTES
 REMOVE ALL TOP SOIL FROM BENEATH LEACH BED AND FOR 10 FT ON ALL SIDES. BACKFILL TO EL 46.00 W/ COARSE WASHED SAND. CONSTRUCT LEACH BED ON THIS SURFACE. MIN. FINISH SLOPE OVER LEACH BED = 2% MAINTAIN MIN FIN. 1' WIDE OF 46.5 FOR A DISTANCE OF 24' ON ALL SIDES OF LEACH BED

WITNESSED BY
 J. B. SCIA
 5-7-77

Robert M. Hawley
 R. H. HAWLEY
 ENGINEERING CORP
 SWANSEA, MASS

TOP OF BRIDGE
 44.00