

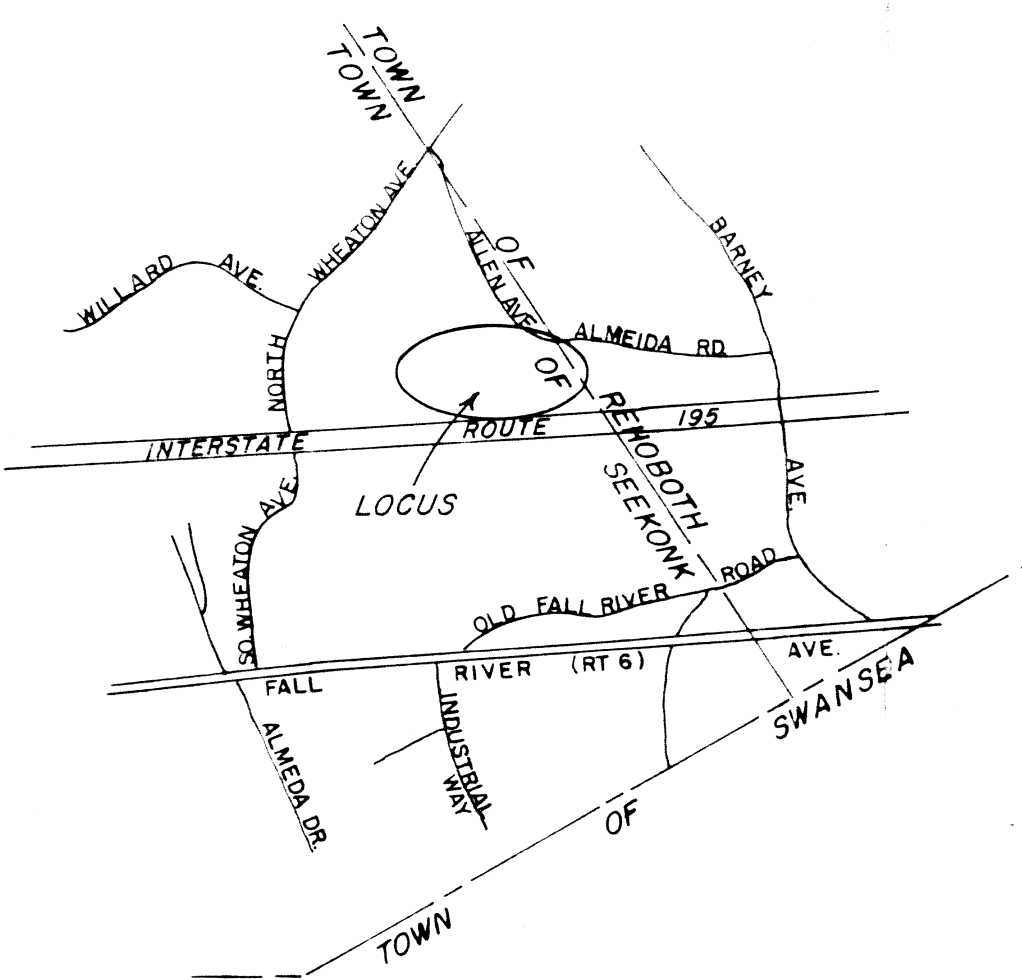
**PLAN OF LAND OWNED BY A. ROTONDO & SONS, INC.
IN SEEKONK & REHOBOTH, MASSACHUSETTS** 69-249

E. OTIS DYER, R.L.S., R.P.E. REHOBOTH, MASS.
MAY 29, 1991
REVISED AUGUST 27, 1991
REVISED FEBRUARY 6, 1992

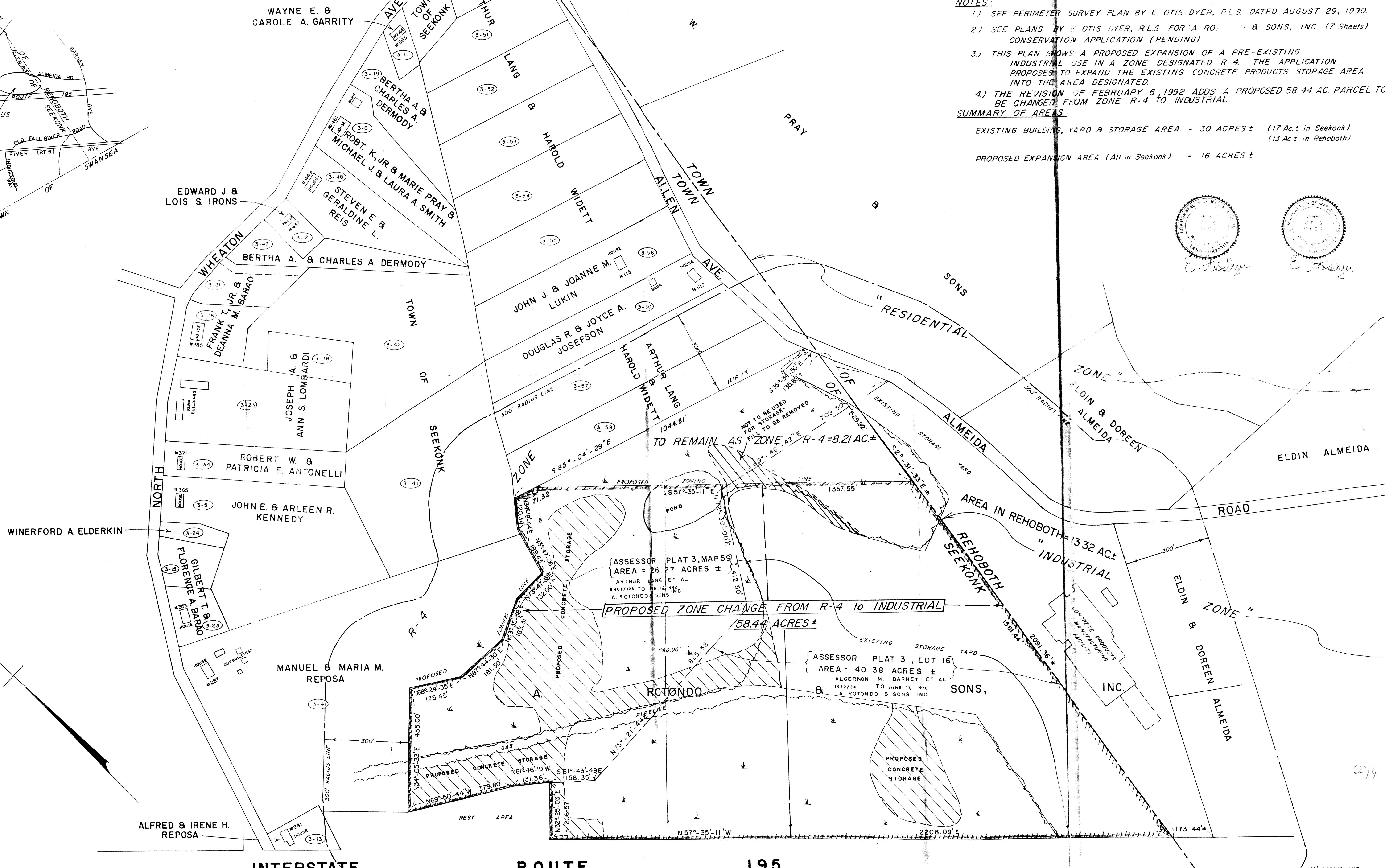
- NOTES:**
- 1.) SEE PERIMETER SURVEY PLAN BY E. OTIS DYER, R.L.S. DATED AUGUST 29, 1990.
 - 2.) SEE PLANS BY E. OTIS DYER, R.L.S. FOR A. ROTONDO & SONS, INC. (7 SHEETS) CONSERVATION APPLICATION (PENDING)
 - 3.) THIS PLAN SHOWS A PROPOSED EXPANSION OF A PRE-EXISTING INDUSTRIAL USE IN A ZONE DESIGNATED R-4. THE APPLICATION PROPOSES TO EXPAND THE EXISTING CONCRETE PRODUCTS STORAGE AREA INTO THE AREA DESIGNATED.
 - 4.) THE REVISION OF FEBRUARY 6, 1992 ADDS A PROPOSED 58.44 AC. PARCEL TO BE CHANGED FROM ZONE R-4 TO INDUSTRIAL.

SUMMARY OF AREAS:
EXISTING BUILDING, YARD & STORAGE AREA = 30 ACRES ± (17 Ac. ± in Seekonk) (13 Ac. ± in Rehoboth)
PROPOSED EXPANSION AREA (All in Seekonk) = 16 ACRES ±

LOCUS MAP
(Not To Scale)



3-98 = ASSESSOR PLAT 3, LOT 58
[Hatched Box] = PROPOSED AREA OF EXPANSION OF CONCRETE PRODUCTS STORAGE



ASSESSOR PLAT 3, MAP 59
AREA = 26.27 ACRES ±
ARTHUR LANG ET AL
4401/198 TO 11-16-1990
A. ROTONDO & SONS, INC.
PROPOSED ZONE CHANGE FROM R-4 TO INDUSTRIAL
58.44 ACRES ±

ASSESSOR PLAT 3, LOT 16
AREA = 40.38 ACRES ±
ALGERNON M. BARNEY ET AL
1559/734 TO JUNE 11, 1970
A. ROTONDO & SONS, INC.

INTERSTATE ROUTE 195

300' RADIUS LINE CONTINUES ON HIGHWAY

300' RADIUS LINE CONTINUES ON HIGHWAY

249