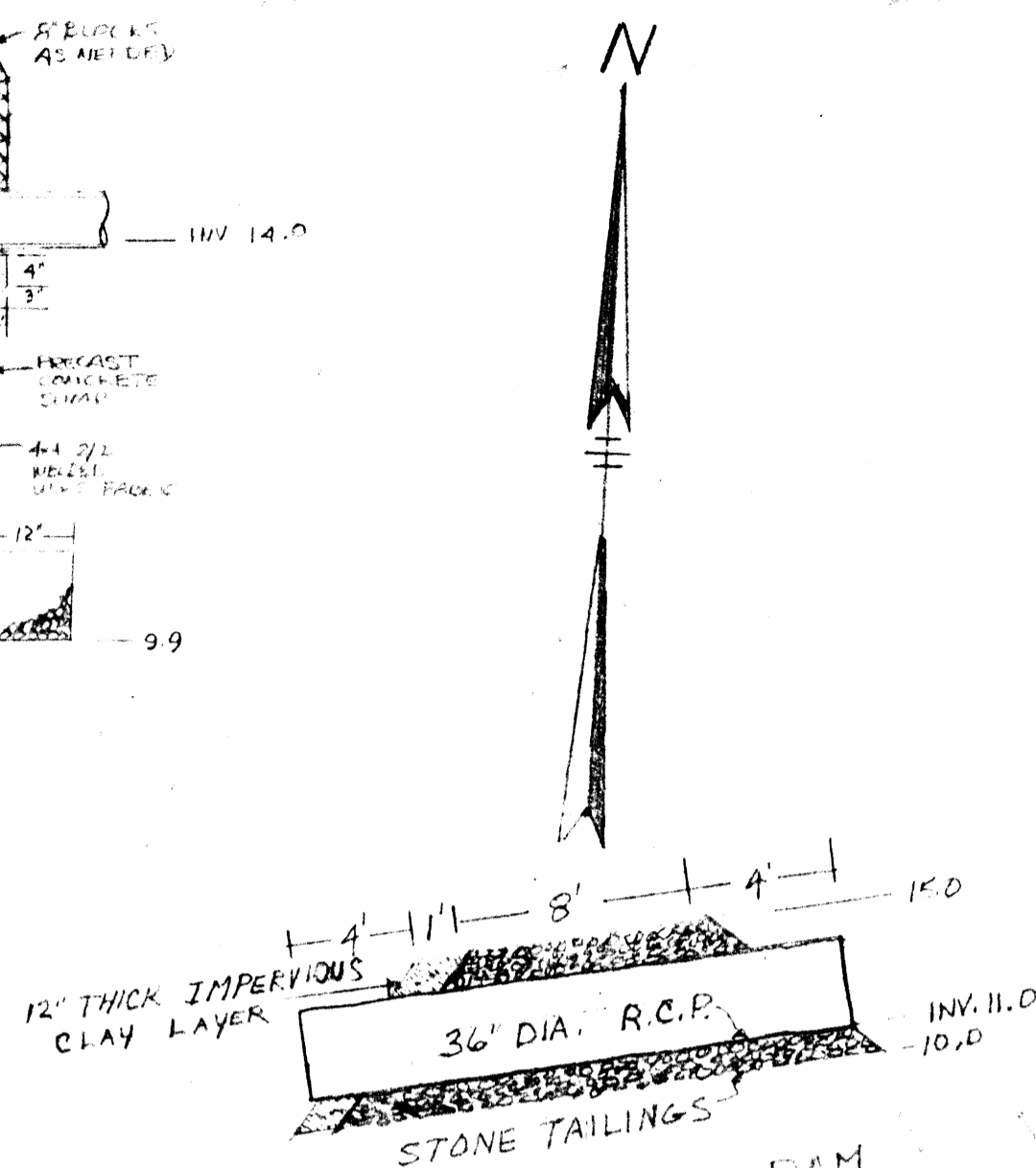
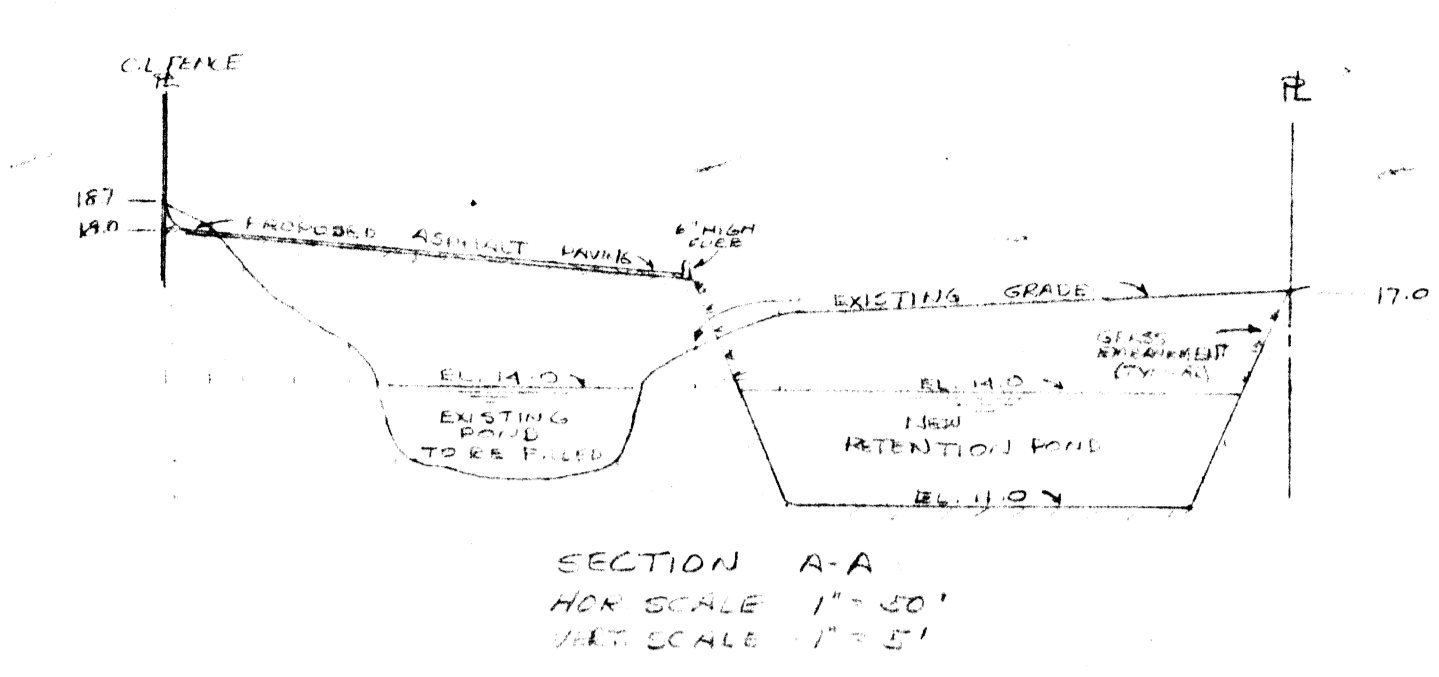
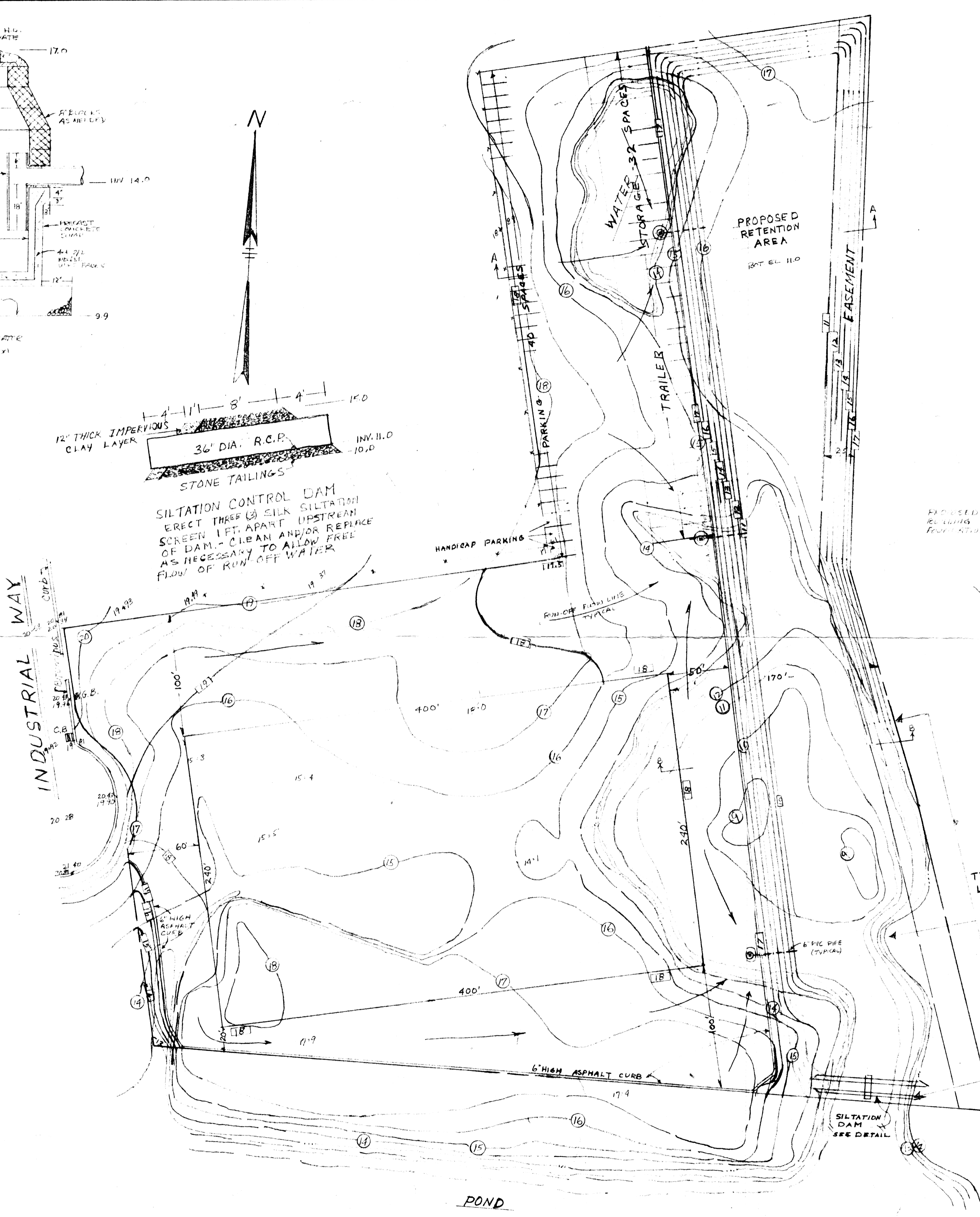


OIL/GREASE SEPARATOR
TYPICAL SECTION
SCALE 1" = 2'



SILTATION CONTROL DAM
ERECT THREE (3) SILK SILTATION
SCREEN 1 FT. APART UPSTREAM
OF DAM. CLEAN AND/OR REPLACE
AS NECESSARY TO ALLOW FREE
FLOW OF RUN-OFF WATER.

INDUSTRIAL WAY

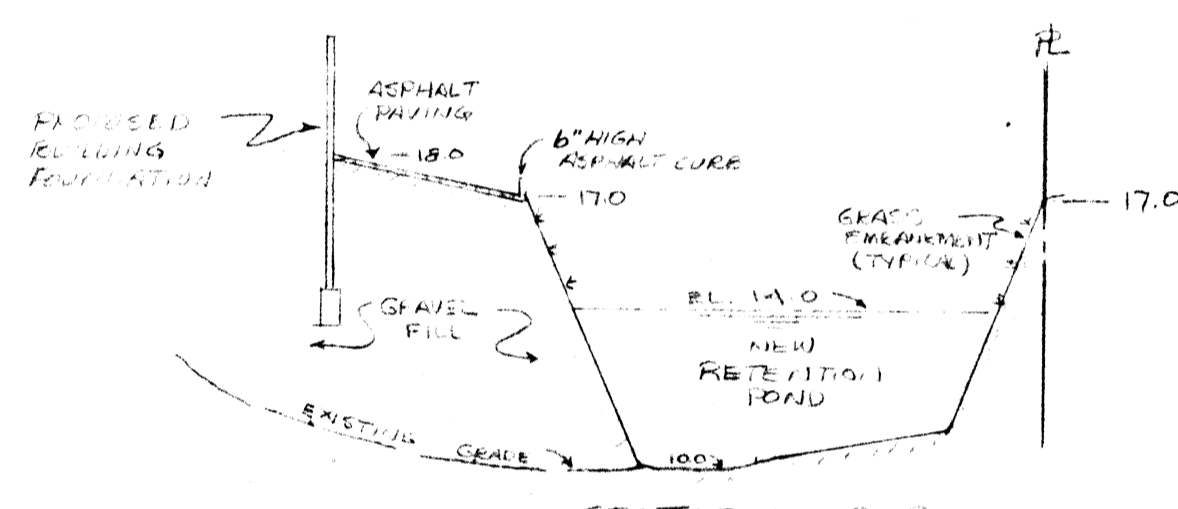


SECTION A-A
HOR SCALE 1" = 50'
VERT SCALE 1" = 5'

WATER STORAGE VOLUME - PRESENT *
NORTH POND 35,660 CF
SOUTH POND 120,100 CF
TOTAL 255,760 CF
WATER STORAGE VOLUME - PROPOSED * - EXCESS WATER STORAGE VOLUME 96,000 CF

VOLUME OF FILL REQ'D 22,500 CY
VOLUME & CUT 10,750 CY
NET FILL REQ'D 11,750 CY

* ACCUMULATED HIGH WATER ELEV. 14.0
VOLUMES DETERMINED BY PLANIMETER



SECTION B-B
HOR SCALE 1" = 50'
VERT SCALE 1" = 5'

LEGEND

- G.B. Granite Bound
- ▤ C.B. Catch Basin
- Edge of Water
- (16) Existing Contours
- Property Line
- x x x Chain Link Fence
- Oil/Grease Separator
- Run-off Flow Line

- REQUIREMENTS FOR PARKING**
- 1) PLAN-TITLE & DATE AS SHOWN BELOW
 - 2) PURCHASER - CASEY BROS. TRUST
 - 3) WILLIAM C. CASEY - TRUSTEE
151 NORTHERN AVE. BOSTON, MA 02127
 - 4) N.A.
 - 5) A) USE OF BLDG - WAREHOUSING
 - B) FLOOR AREA - 96,000 S.F. MAX.
 - C) 40 EMPLOYEE'S
 - D) BLDG. - 240' WIDE BY 400' LONG.
 - E) N.A.
 - F) BLDG SET BACKS
 - 1) FRONT - MIN. 60' FROM STREET
 - 2) NORTH SIDE - 100' FROM SIDE LINE.
 - 3) SOUTH SIDE (S.W. COR.) 20' FROM SIDE LINE.
 - 4) SOUTH SIDE (S.E. COR.) 100' FROM SIDE LINE.
 - 5) EASTERLY SIDE (REAR) 50' TO EDGE OF POND
170' FROM PROPERTY LINE.
 - G) LAND INDUSTRIAL ZONED
 - H) PARKING SPACES - 40 CARS.
 - I) TRAILER STORAGE - 32 SPACES

PROPOSED GRADING
AND
TOPOGRAPHICAL SURVEY IN SEEKONK, MASS.
FOR
JOANANNE & JOHN L. MARSHALL III

SCALE: 1" = 50' JULY, 1987

NOTE:
BLDG AS SHOWN & LOCATED WOULD BE A
MAXIMUM OF 96,000 S.F. - HOWEVER, PURCHASER
RESERVES THE RIGHT TO ALTER, CHANGE,
MODIFY OR REDUCE THE SIZE OF THE
PROPOSED BLDG TO ACCOMMODATE THEIR
NEEDS.

REVISION A 10-10-87

Commercial Building Corp. Kirby
P.O. BOX 4544 / East Providence, R.I. 02915 / (401) 433-3300

PROPOSED BUILDING FOR
**WILLIAM C. CASEY - TRUSTEE
CASEY BROS. TRUST
INDUSTRIAL WAY
SEEKONK, MA.**

date	drawn	scale	revisions	sheet
JULY 87	A.H.R.	1"=50'	A-10-10-87	1

P-1