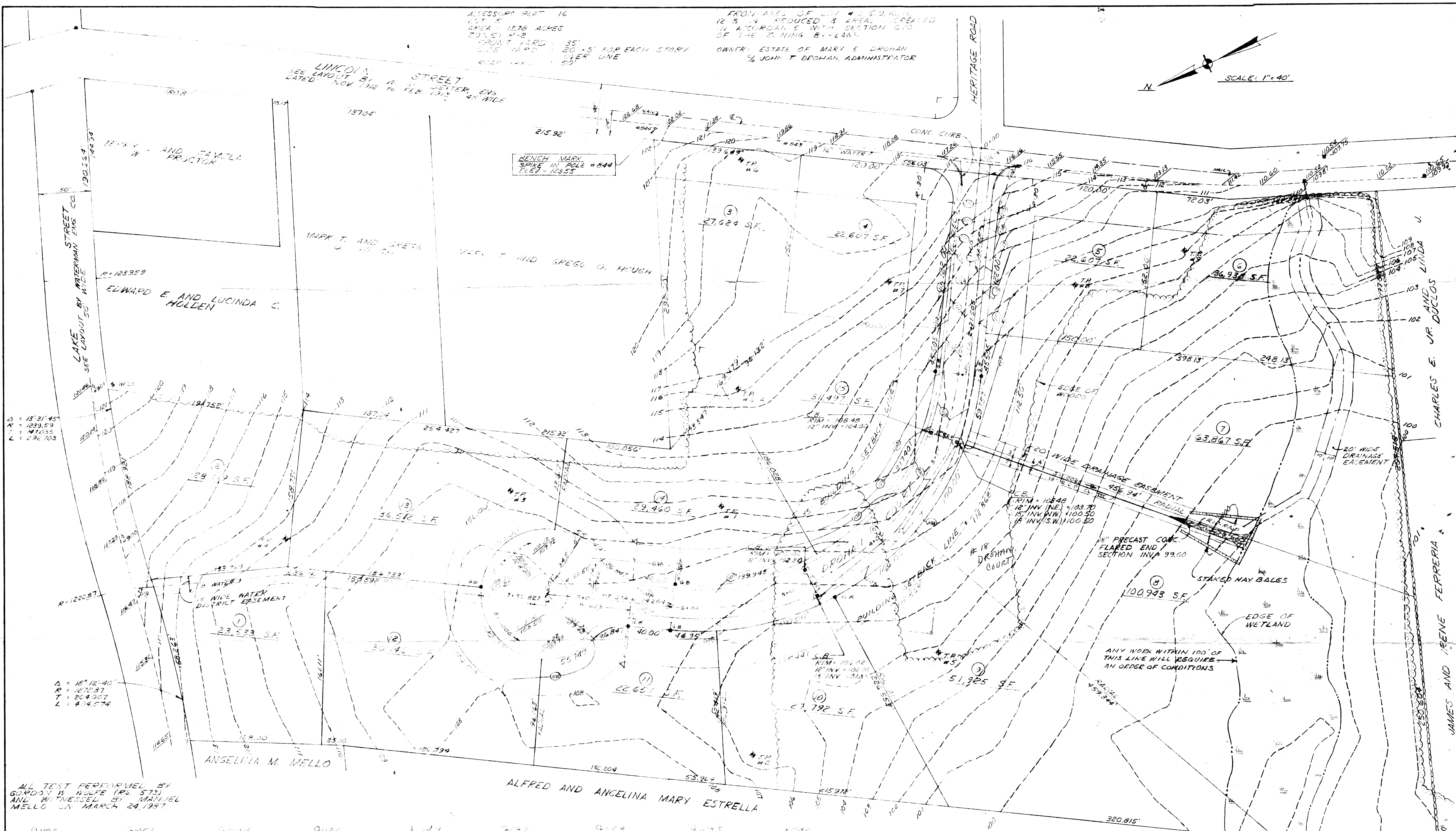
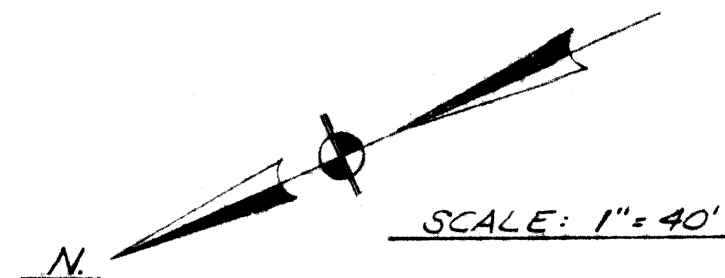


ACCESSORS PLAT 16
 LOT 5
 AREA 13.76 ACRES
 FRONT YARD 35'
 SIDE YARD 20.5' FOR EACH STORY
 W/ER LINE
 REAR YARD 50'

FROM ASSES. OF LOT # 2, 5, 9, 10, 11,
 12 & 14 REDUCED & AREA INCREASED
 IN ACCORDANCE WITH SECTION 610
 OF THE ZONING BY-LAWS.
 OWNER: ESTATE OF MARY E. DROGAN
 % JOHN T. DROGAN, ADMINISTRATOR



Δ = 13° 31' 45"
 A = 1239.59
 T = 470.55
 L = 292.703

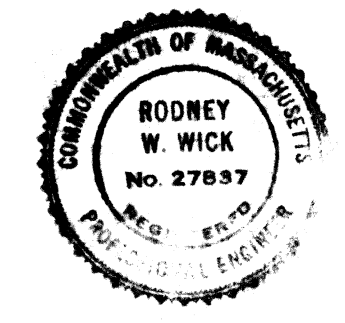
Δ = 16° 12' 40"
 A = 1272.37
 T = 269.007
 L = 409.574

ALL TEST PERFORMED BY
 GORDON W. HOLFE (RS 573)
 AND WITNESSED BY MANUEL
 MELLO ON MARCH 24, 1987

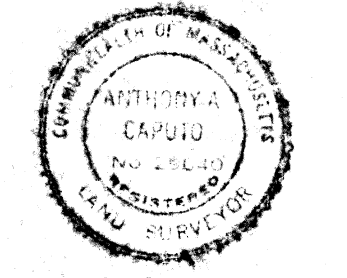
| | | | | | | | | |
|---|---|--|---|--|---|---|---|---|
| <p>Q103 22" TOP & SUBSOIL 42" FINE SAND LITTLE SILT 68" TIGHT SAND & GRAVEL LITTLE SILT</p> <p>TEST PIT NO. 1 10 MINS./INCH</p> | <p>Q1051 24" TOP & SUBSOIL 4" WATER 24" FINE SILTY SAND 64" TIGHT SILTY SAND & GRAVEL 34" CLEAN SAND & GRAVEL</p> <p>TEST PIT NO. 2 10 MINS./INCH</p> | <p>Q1052 22" TOP & SUBSOIL 4" WATER 58" SILTY SAND & GRAVEL 52" TIGHT SILTY SAND & GRAVEL</p> <p>TEST PIT NO. 3 15 MINS./INCH</p> | <p>Q1060 20" TOP & SUBSOIL 4" WATER 64" TIGHT SILTY SAND & GRAVEL 45" MED SILTY SAND</p> <p>TEST PIT NO. 4 17 MINS./INCH</p> | <p>Q1054 24" TOP & SUBSOIL 4" WATER 12" TIGHT SILTY SAND & GRAVEL</p> <p>TEST PIT NO. 5 5 MINS./INCH</p> | <p>Q1052 23" TOP & SUBSOIL 4" WATER 31" SILTY SAND 60" TIGHT SILTY SAND & GRAVEL</p> <p>TEST PIT NO. 6 10 MINS./INCH</p> | <p>Q1059 30" TOP & SUBSOIL 4" WATER 50" TIGHT SILTY SAND & GRAVEL</p> <p>TEST PIT NO. 7 10 MINS./INCH</p> | <p>Q1035 24" TOP & SUBSOIL 4" WATER 72" TIGHT SILTY SAND & GRAVEL</p> <p>TEST PIT NO. 8 12 MINS./INCH</p> | <p>Q1060 30" TOP & SUBSOIL 4" WATER 30" TIGHT SILTY SAND & GRAVEL</p> <p>TEST PIT NO. 9 10 MINS./INCH</p> |
|---|---|--|---|--|---|---|---|---|

EXHIBIT A

ALL CELLAR FLOORS ARE TO BE SET AT A MINIMUM OF 24" ABOVE OBSERVED GROUND-WATER ELEVATIONS.



REVISIONS:
 AUGUST, 1987 (MISC.)
 OCTOBER, 1987 (DIM. & AREAS)



PRELIMINARY
STRAWBERRY FIELD
ESTATES
 SEEKONK, MASSACHUSETTS

CAPUTO AND WICK LTD.
 1150 PAWTUCKET AVE.
 RUMFORD, R.I. 02916
 401-434-8880

DATE: JULY 1987
 SHEET: 1 OF 2