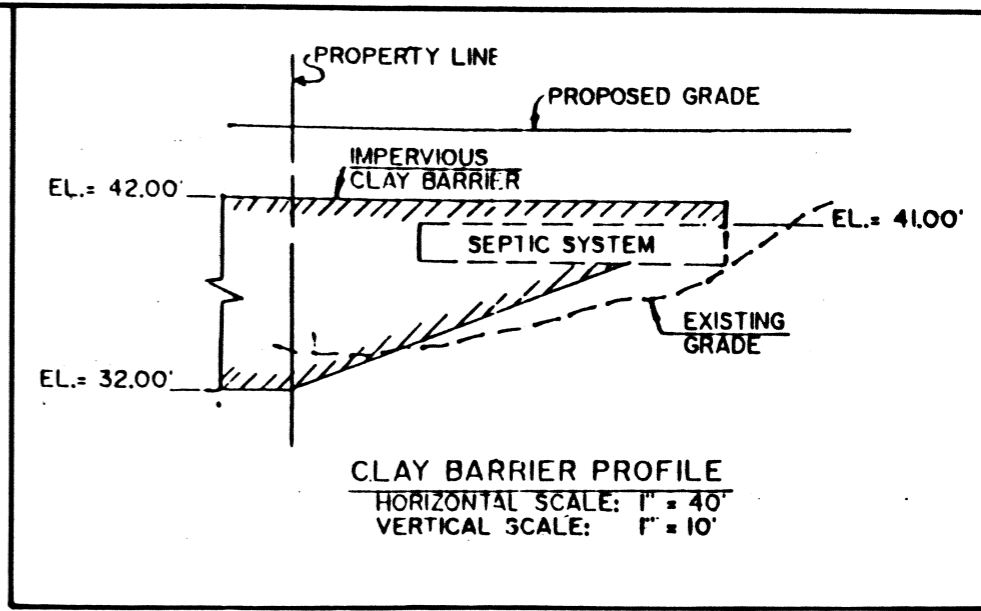
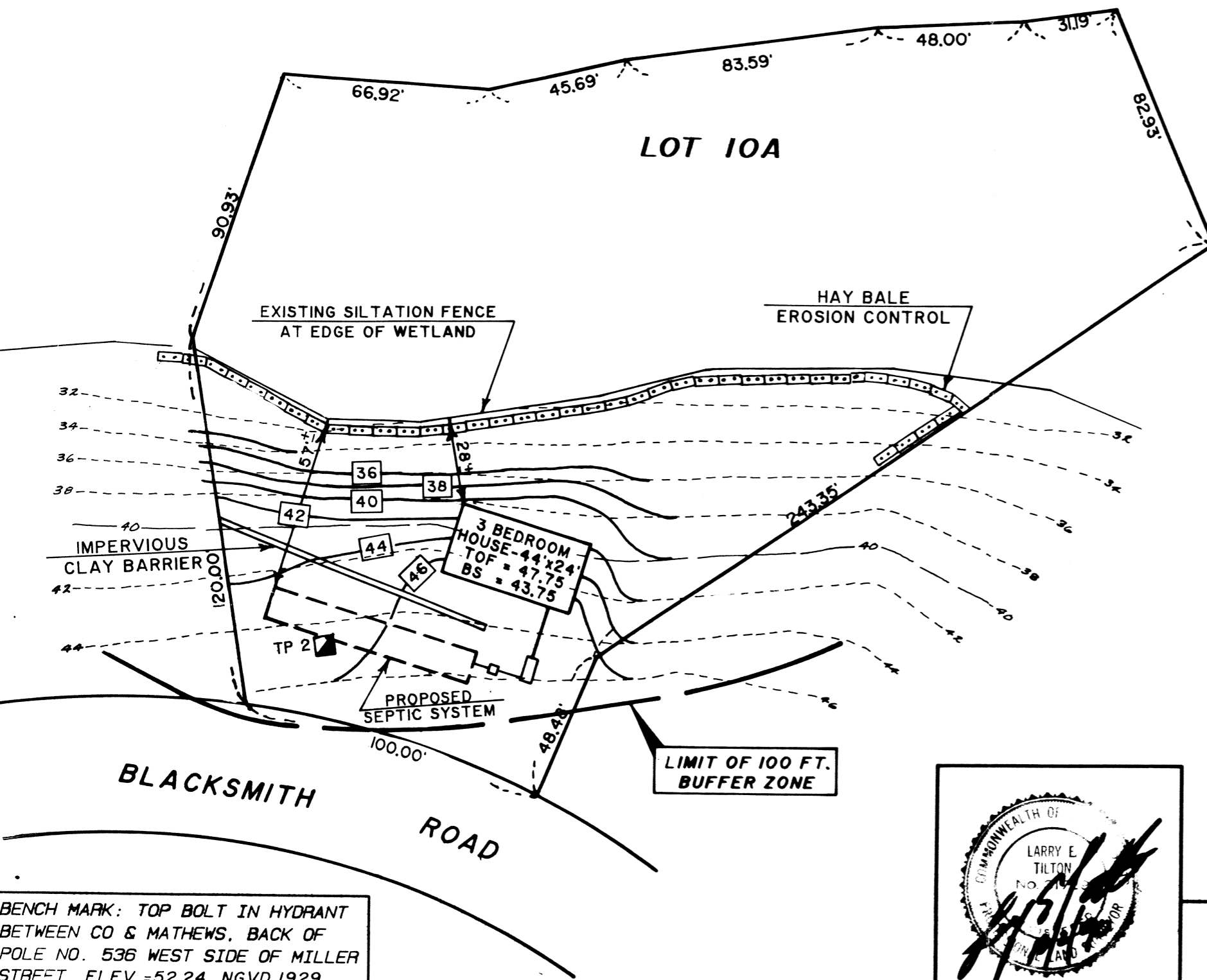


AN OF LOT NO. 10A
 T AREA = 52,349.8 SQ. FT.
 OR 1.20 ACRES

NOTES:

1. EXCAVATION OF UNSUITABLE MATERIAL FOR LOTS 10A AND 11A, TO BE COMPLETED SIMULTANEOUSLY.
2. ALL ELEMENTS OF SYSTEM TO BE DESIGNED FOR H20 WHEEL LOAD.
3. FILL APPROVED UNDER SE 69-69.

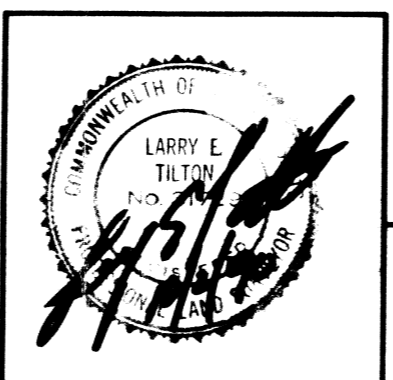


**PROPOSED SITE AND
 EROSION CONTROL PLAN
 HERITAGE HEIGHTS
 LOT 10A - BLACKSMITH ROAD
 SEEKONK, MASSACHUSETTS**

PREPARED FOR
 HERITAGE HOMES OF ATTLEBORO, INC.
 P. O. BOX 73
 CHARTLEY, MASSACHUSETTS 02712

SCALE: 1" = 40' DRAWN BY: BTDW JOB NO. 173
 DATE: OCTOBER 1, 1990 CHECKED BY: BL, LET DWG. NO. 1-1

SMR PREPARED BY
SMR SURVEYING & ENGINEERING, INC.
 P. O. BOX 1748 72 WASHINGTON STREET
 PLAINVILLE, MASSACHUSETTS 02762
 (508) 699-2852 FAX (508) 695-2898



BENCH MARK: TOP BOLT IN HYDRANT
 BETWEEN CO & MATHEWS, BACK OF
 POLE NO. 536 WEST SIDE OF MILLER
 STREET. ELEV = 52.24 NGVD 1929

REVISIONS: #1/2/90: ADD TEST PIT LOCATIONS

69-236