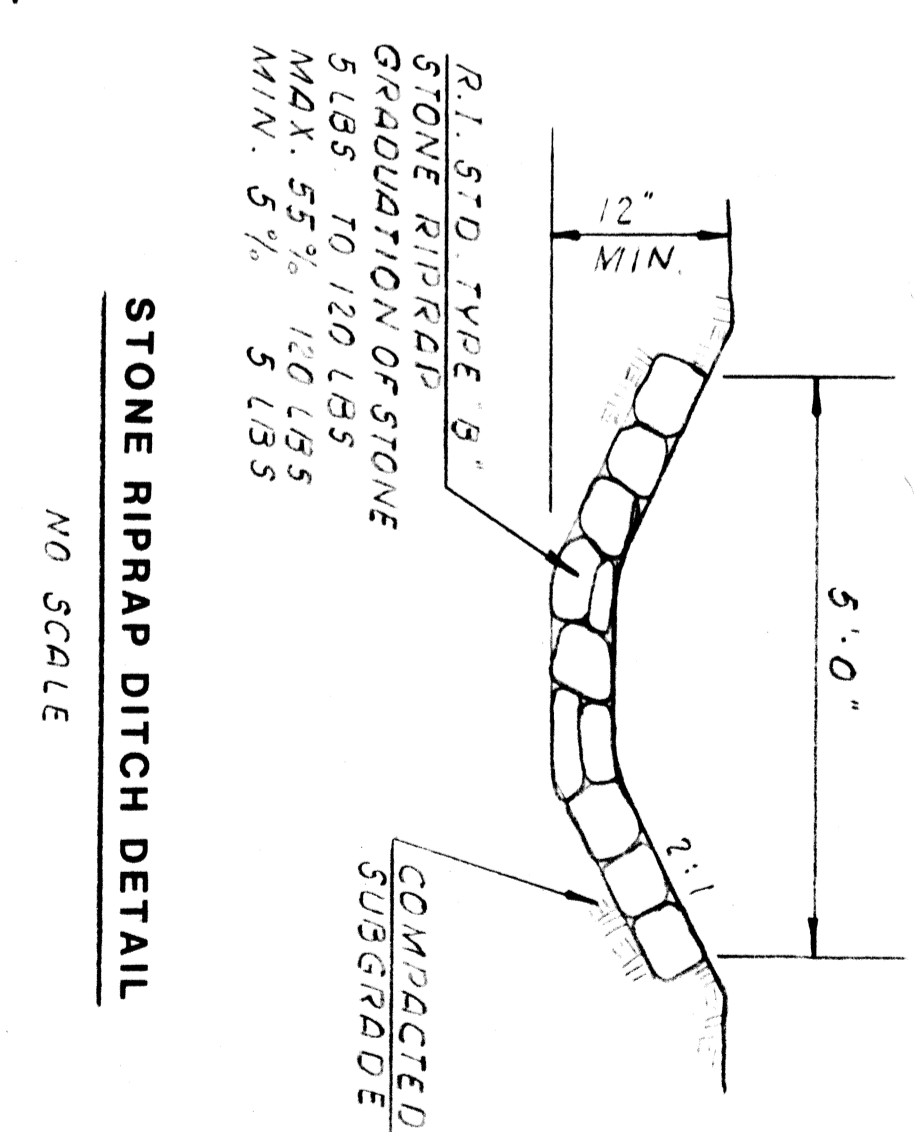
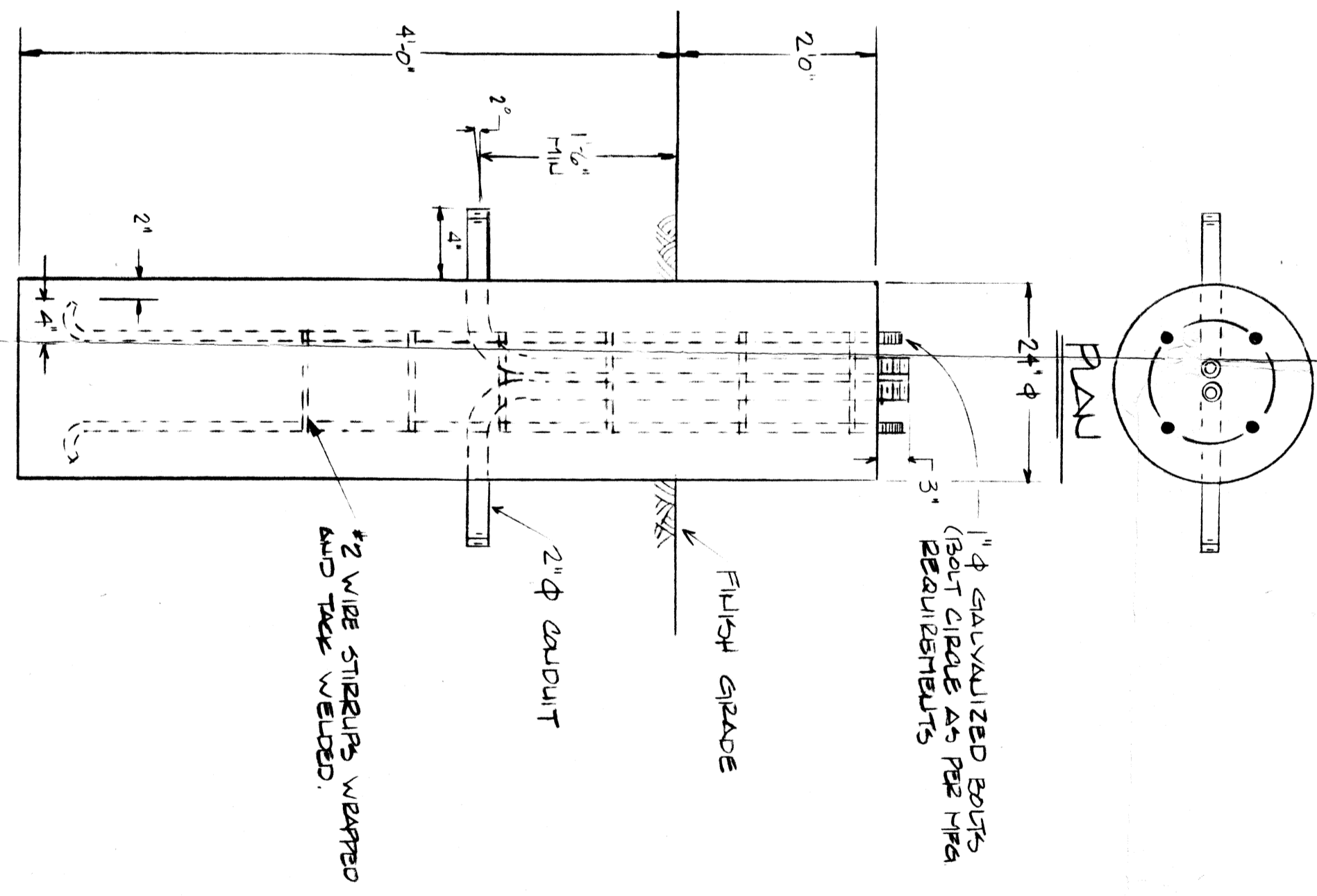


**SITE PLAN (118 PARKING SPACES)**  
1" = 20'



**STONE RIPRAP DITCH DETAIL**  
NO SCALE



**LIGHT POLE BASE (TYPICAL FOR 6)**  
1/8\"/>

- GENERAL NOTES**
- FOR GENERAL NOTES AND LEGEND SEE SITE & DRAINAGE PLAN SE-1.
  - THE CONTRACTOR TO PROVIDE 4' LEAD & 5' MINIMUM OF 5' BEYOND ALL DISTURBED AREAS.

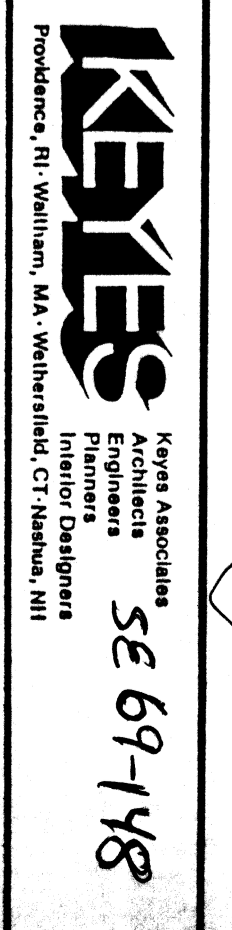
**ELECTRICAL NOTES**

- REMOVE AND DISPOSE ALL EXISTING ELECTRICAL SYSTEMS AND EQUIPMENT.
- INSTALL ALL NEW ELECTRICAL SYSTEMS AND EQUIPMENT AS SHOWN ON THIS PLAN.
- INSTALL ALL NEW ELECTRICAL SYSTEMS AND EQUIPMENT AS SHOWN ON THIS PLAN.
- INSTALL ALL NEW ELECTRICAL SYSTEMS AND EQUIPMENT AS SHOWN ON THIS PLAN.
- INSTALL ALL NEW ELECTRICAL SYSTEMS AND EQUIPMENT AS SHOWN ON THIS PLAN.
- INSTALL ALL NEW ELECTRICAL SYSTEMS AND EQUIPMENT AS SHOWN ON THIS PLAN.
- INSTALL ALL NEW ELECTRICAL SYSTEMS AND EQUIPMENT AS SHOWN ON THIS PLAN.
- INSTALL ALL NEW ELECTRICAL SYSTEMS AND EQUIPMENT AS SHOWN ON THIS PLAN.
- INSTALL ALL NEW ELECTRICAL SYSTEMS AND EQUIPMENT AS SHOWN ON THIS PLAN.
- INSTALL ALL NEW ELECTRICAL SYSTEMS AND EQUIPMENT AS SHOWN ON THIS PLAN.

**ELECTRICAL LEGEND**

- NEW ELECTRICAL PANO
- NEW ELECTRICAL HANDPANS WITH PANELS & COVERS 2\"/>
- NEW LIGHT POLE & PANS

8 BY 5  
861-2900



**JOHNSON & WALES INN**  
ROUTE 44  
TAUNTON AVE.  
TAUNTON, MASS.  
361-2900

**SITE PARKING & DRAINAGE PLAN**  
SITE ENGINEERING SE-2