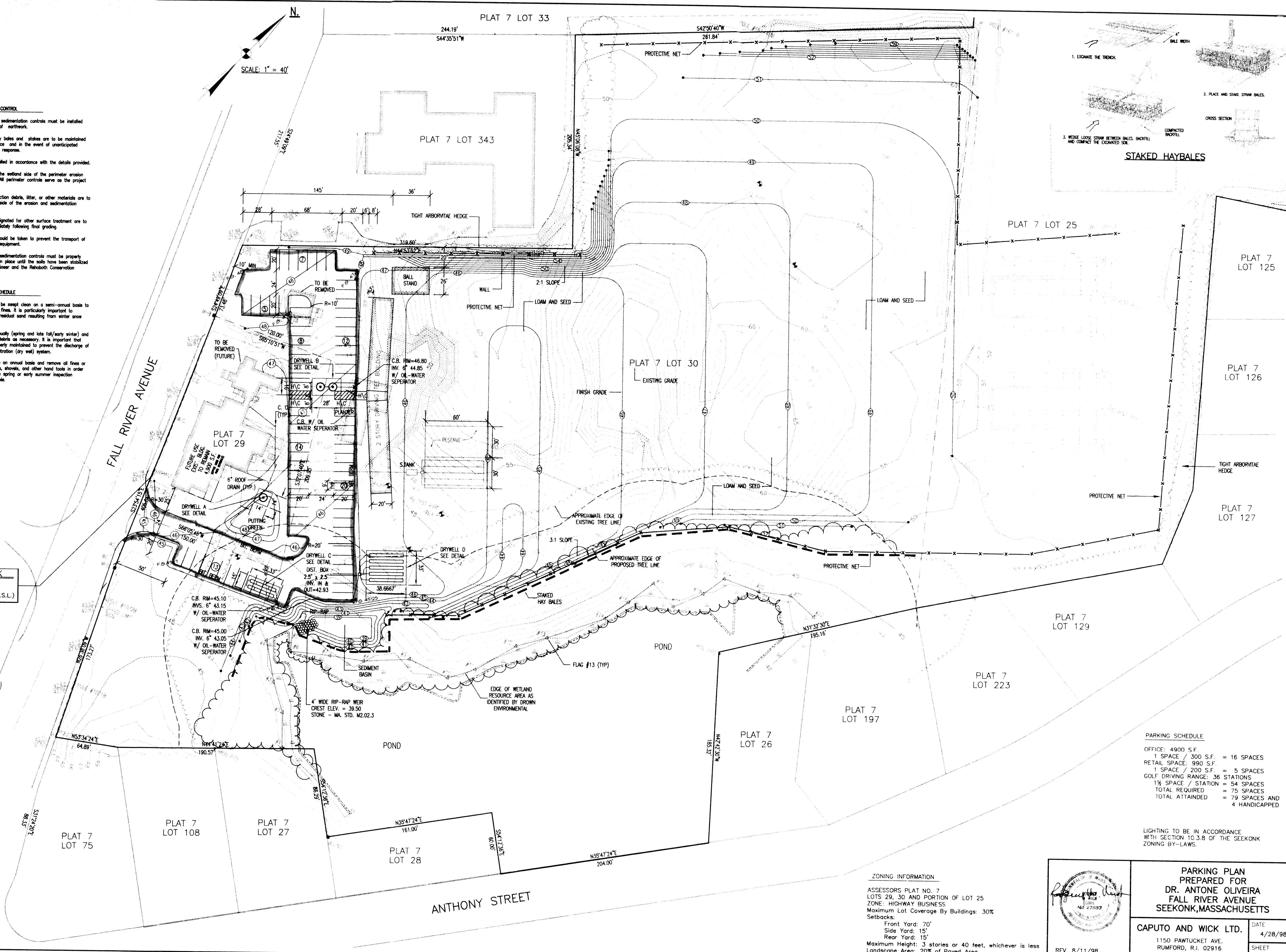
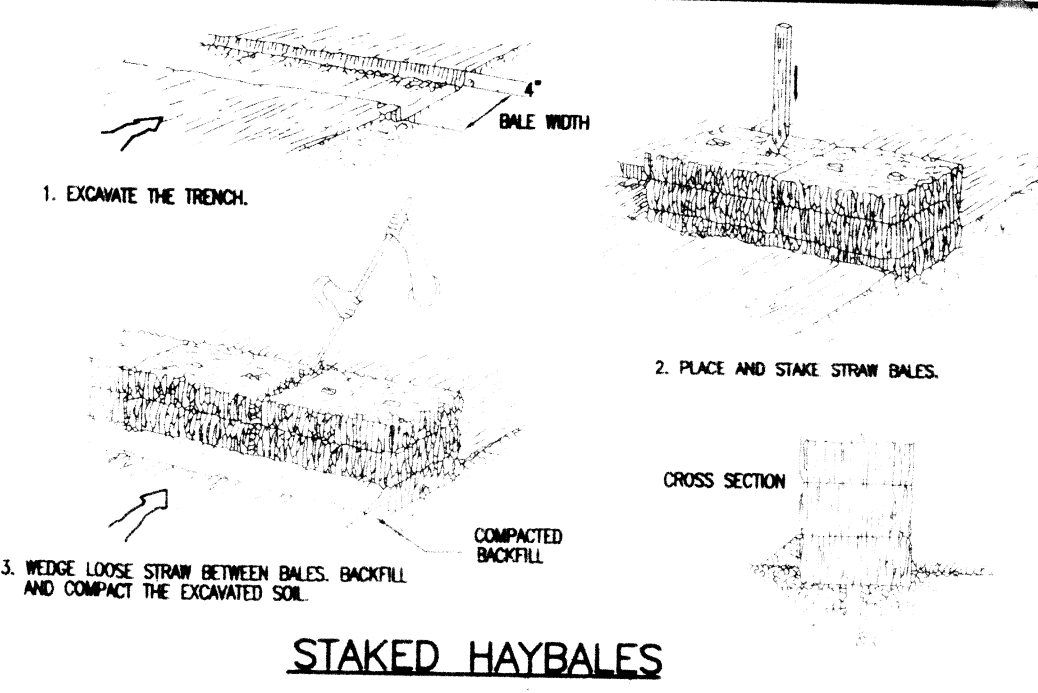


ALS:\CADPROJ\SEEKONK\FRA OLIVEIRA PARK--DRAIN

- EROSION AND SEDIMENTATION CONTROL**
- 1.) All perimeter erosion and sedimentation controls must be installed prior to the commencement of earthwork.
 - 2.) Accessible reserves of hay bales and stakes are to be maintained on site for routine maintenance and in the event of unanticipated problems requiring emergency response.
 - 3.) Hay bales should be installed in accordance with the details provided.
 - 4.) No work is to occur on the wetland side of the perimeter erosion and sedimentation controls. All perimeter controls serve as the project limit of disturbance.
 - 5.) No stones, brush, construction debris, litter, or other materials are to be deposited on the wetland side of the erosion and sedimentation controls.
 - 6.) All disturbed soils not designated for other surface treatment are to be loamed and seeded immediately following final grading.
 - 7.) Appropriate precautions should be taken to prevent the transport of soil offsite from construction equipment.
 - 8.) All perimeter erosion and sedimentation controls must be properly maintained and must remain in place until the soils have been stabilized to the satisfaction of the Engineer and the Rehoboth Conservation Commission.

- STORM WATER MAINTENANCE SCHEDULE**
- Parking/roadway areas should be swept clean on a semi-annual basis to remove contaminants and soil fines. It is particularly important to schedule sweeping to remove residual sand resulting from winter snow and ice removal operations.
- Inspect catch basins semi-annually (spring and late fall/early winter) and remove sediment, leaves and debris as necessary. It is important that the catch basin sump be properly maintained to prevent the discharge of fines into the storm water infiltration (dry well) system.
- Inspect the dry well system on an annual basis and remove all fines or other contaminants using rakes, shovels, and other hand tools in order to minimize disturbance. A late spring or early summer inspection schedule is considered preferable.

BENCH MARK
TOP OF HYDRANT SPINDLE
ELEV. = 48.02 (M.S.L.)



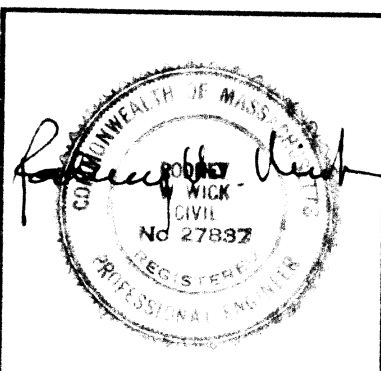
PARKING SCHEDULE

OFFICE:	4900 S.F.
1 SPACE / 300 S.F.	= 16 SPACES
RETAIL SPACE:	990 S.F.
1 SPACE / 200 S.F.	= 5 SPACES
COLF DRIVING RANGE:	36 STATIONS
1 1/2 SPACE / STATION	= 54 SPACES
TOTAL REQUIRED	= 75 SPACES
TOTAL ATTAINED	= 79 SPACES AND 4 HANDICAPPED

LIGHTING TO BE IN ACCORDANCE WITH SECTION 10.3.8 OF THE SEEKONK ZONING BY-LAWS.

ZONING INFORMATION

ASSESSORS PLAT NO. 7
LOTS 29, 30 AND PORTION OF LOT 25
ZONE: HIGHWAY BUSINESS
Maximum Lot Coverage By Buildings: 30%
Setbacks:
Front Yard: 70'
Side Yard: 15'
Rear Yard: 15'
Maximum Height: 3 stories or 40 feet, whichever is less
Landscape Area: 20% of Paved Area



PARKING PLAN PREPARED FOR
DR. ANTONIO OLIVEIRA
FALL RIVER AVENUE
SEEKONK, MASSACHUSETTS

CAPUTO AND WICK LTD. DATE: 4/28/98
1150 PAWTUCKET AVE. SHEET: 1 OF 1
RUMFORD, R.I. 02916
401-434-8880

REV. 8/11/98
REV. 8/27/98