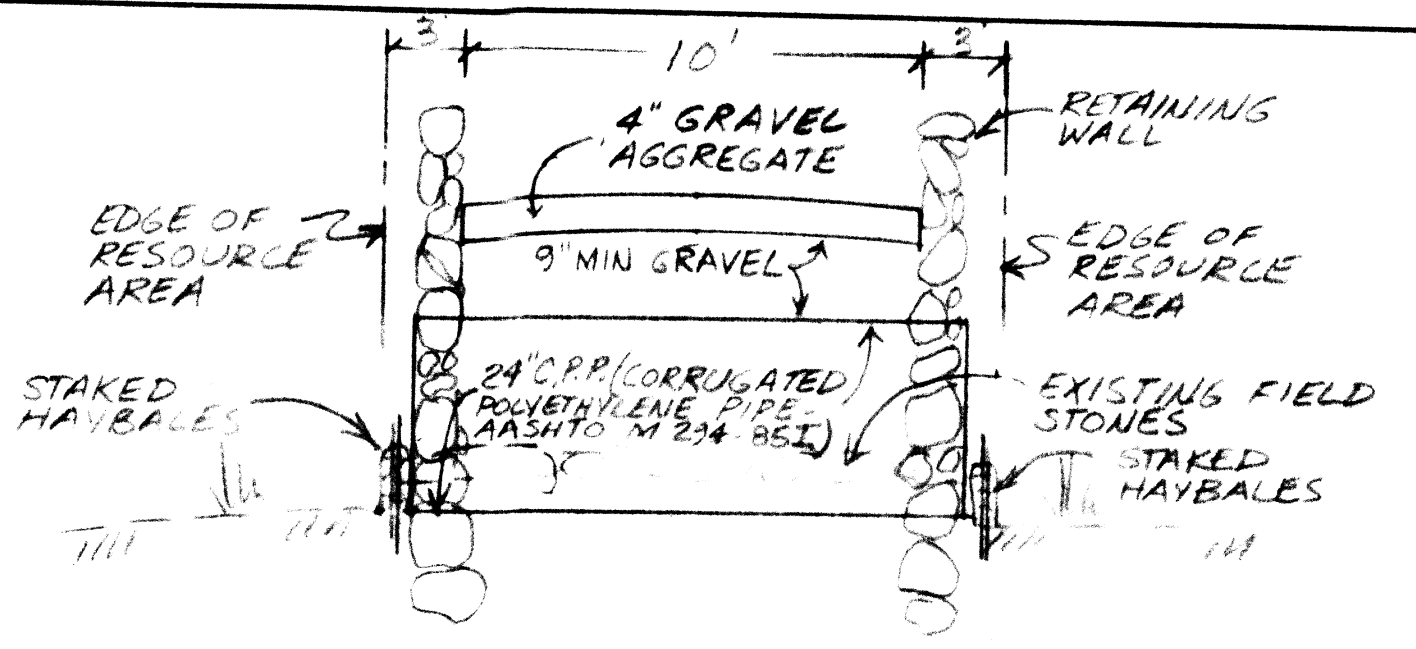


SCALE 1" = 30'



**EROSION AND SEDIMENTATION CONTROL**

- 1.) All perimeter erosion and sedimentation controls must be installed prior to the commencement of earthwork.
- 2.) Accessible reserves of hay bales and stakes are to be maintained on site for routine maintenance and in the event of unanticipated problems requiring emergency response.
- 3.) Hay bales should be installed in accordance with the details provided.
- 4.) No work is to occur on the wetland side of the perimeter erosion and sedimentation controls. All perimeter controls serve as the project limit of disturbance.
- 5.) No stones, brush, construction debris, litter, or other materials are to be deposited on the wetland side of the erosion and sedimentation controls.
- 6.) All disturbed soils not designated for other surface treatment are to be loamed and seeded immediately following final grading.
- 7.) Appropriate precautions should be taken to prevent the transport of soil offsite from construction equipment.
- 8.) All perimeter erosion and sedimentation controls must be properly maintained and must remain in place until the soils have been stabilized to the satisfaction of the Engineer and the Seekonk Conservation Commission.

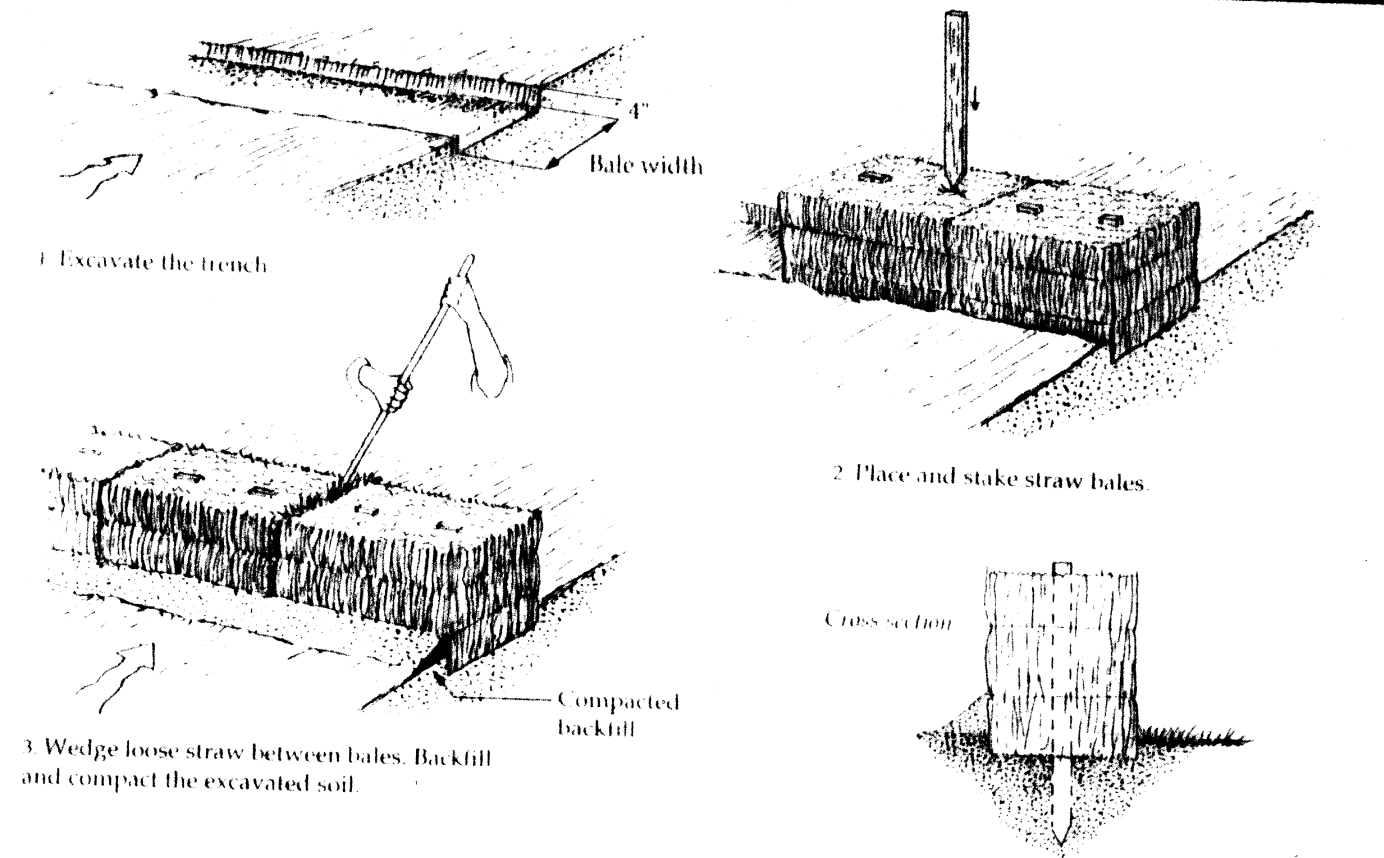
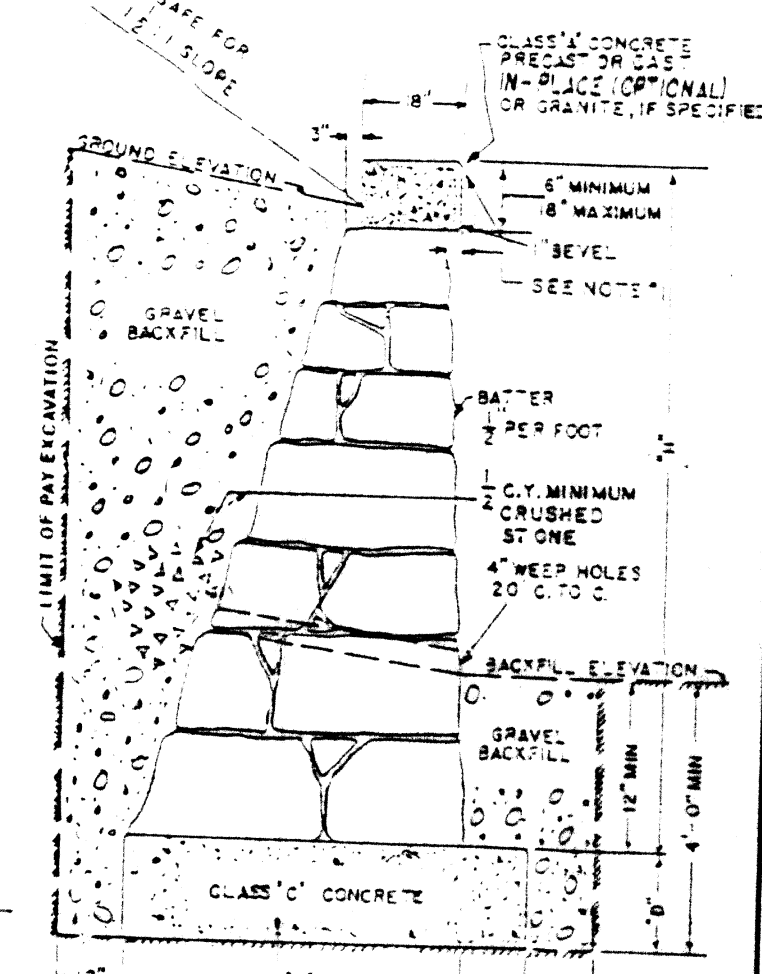
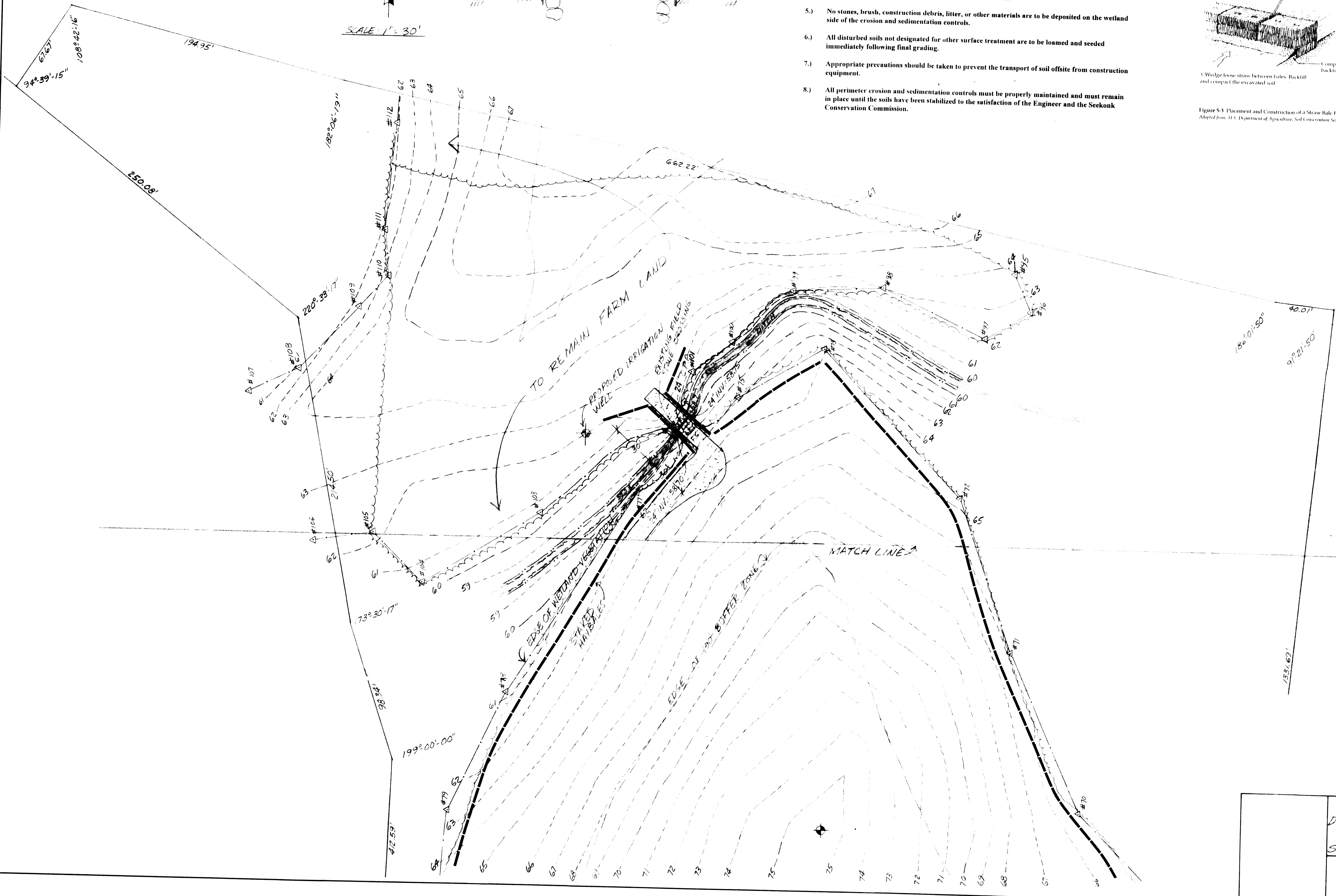


Figure 5-3 Placement and Construction of a Straw Bale Barrier  
Adapted from U.S. Department of Agriculture, Soil Conservation Service, Storrs, Connecticut



- NOTES:
1. COPING OVERHANG TO BE APPROXIMATELY 1" FOR WALLS 10' OR MORE IN HEIGHT AND APPROXIMATELY 2" FOR WALLS LESS THAN 10' IN HEIGHT. IN A CONTINUOUS WALL OF VARYING HEIGHT THE OVERHANG WILL BE APPROXIMATELY 2" TO 3" FOR THE ENTIRE LENGTH.
  2. ALL DIMENSIONS SHOWN ARE MINIMUM.
  3. PAYMENT WILL BE BASED ON THE ACCOMPANYING TABLE.

**SITE PLAN**  
 DRS RAYMOND JR & DEBRA GEORGE  
 READ STREET  
 SEEKONK, MASSACHUSETTS

**CAPUTO AND WICK LTD.**  
 1150 PAWTUCKET AVE  
 RUMFORD, R.I. 02916  
 401-434-8880

DATE: 2/21/16  
 SHEET: 2 of 2