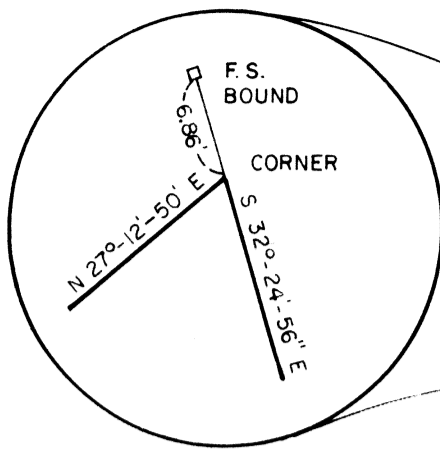


APPROVAL UNDER THE SUBDIVISION CONTROL LAW NOT REQUIRED

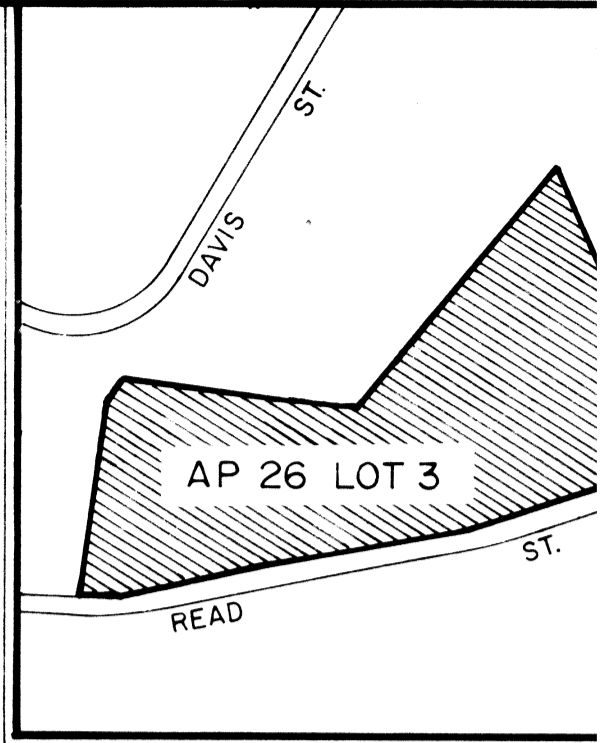
ZONING: R-4

- MINIMUM AREA
- MINIMUM WIDTH @ REAR OF FRONT YARD
- MINIMUM WIDTH @ STREET
- MINIMUM DEPTH OF FRONT YARD AND CORNER SIDE YARD
- MINIMUM DEPTH OF REAR YARD
- MINIMUM WIDTH OF EACH INTERIOR SIDE YARD
- MAXIMUM HEIGHT

62,500 SQ. FT.  
250 FT.  
200 FT.  
50 FT.  
80 FT.  
35' + 5' FOR EVERY STORY OVER 3 STORIES OR 40', WHICH-EVER IS LESS



N/F ROGER SIMOES  
PLAT 26 LOT 5

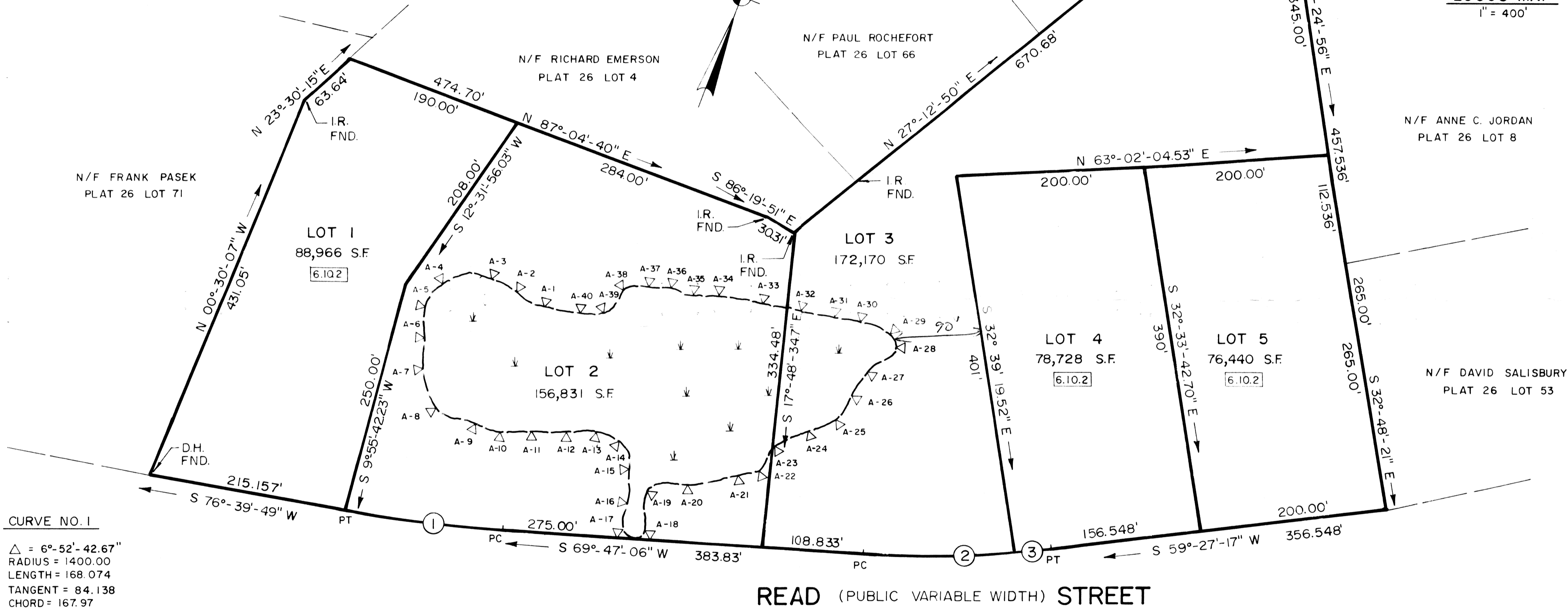
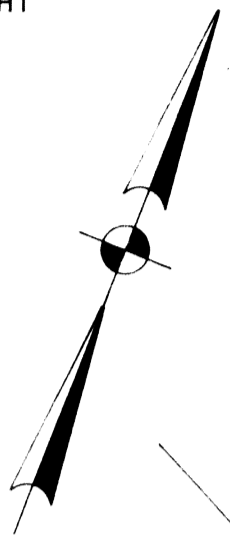


LOCUS MAP  
1" = 400'

TOWN OF SEEKONK PLANNING BOARD

REGISTRY USE ONLY

DATE \_\_\_\_\_



CURVE NO. 1  
 $\Delta = 6^{\circ}-52'-42.67''$   
 RADIUS = 1400.00  
 LENGTH = 168.074  
 TANGENT = 84.138  
 CHORD = 167.97

CURVE NO. 2  
 $\Delta = 8^{\circ}-12'-2.6''$   
 RADIUS = 1130.00  
 LENGTH = 161.74'  
 TANGENT = 81.01'  
 CHORD = 161.60'

CURVE NO. 3  
 $\Delta = 2^{\circ}-7'-47''$   
 RADIUS = 1130.00  
 LENGTH = 42.00'  
 TANGENT = 21.00'  
 CHORD = 40.00'

N/F ROBERT BUTLER

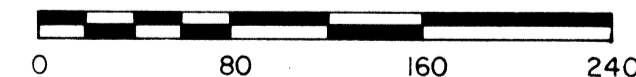
*Robert Butler*  
 Signature

PLAN OF LAND IN SEEKONK, BRISTOL COUNTY, MA

PREPARED FOR

**ROBERT BUTLER**

SCALE: 1" = 80' DECEMBER 1994



PREPARED BY:  
 B.R. MCGEE AND ASSOCIATES  
 203 CHESTNUT ST.  
 REHOBOTH, MA. 02769 (508) 252-5391

LEGEND

- DH DRILL HOLE
- IR IRON ROD
- A-1  $\Delta$  WETLAND FLAG AND NUMBER
- FS FIELD STONE BOUND
- 6.10.2 ZONING AREA ALTERNATE

"I CERTIFY THAT THIS PLAN HAS BEEN PREPARED IN CONFORMITY WITH THE RULES AND REGULATIONS OF THE REGISTERS OF THE COMMONWEALTH OF MASSACHUSETTS."

*Dec 6, 1994*  
 DATE

*B.R. McGee*  
 PREPARER

LOT AREA AND WIDTH REQUIREMENTS PER SECTION 6.10.2 OF THE SEEKONK ZONING BY-LAWS. MINIMUM AREA REQUIRED: 62,500 SQ. FT. 250 SQ. FT. ADDED TO LOT AREA FOR EACH FOOT LESS THAN REQ'D. FRONTAGE AT STREET OR SETBACK