

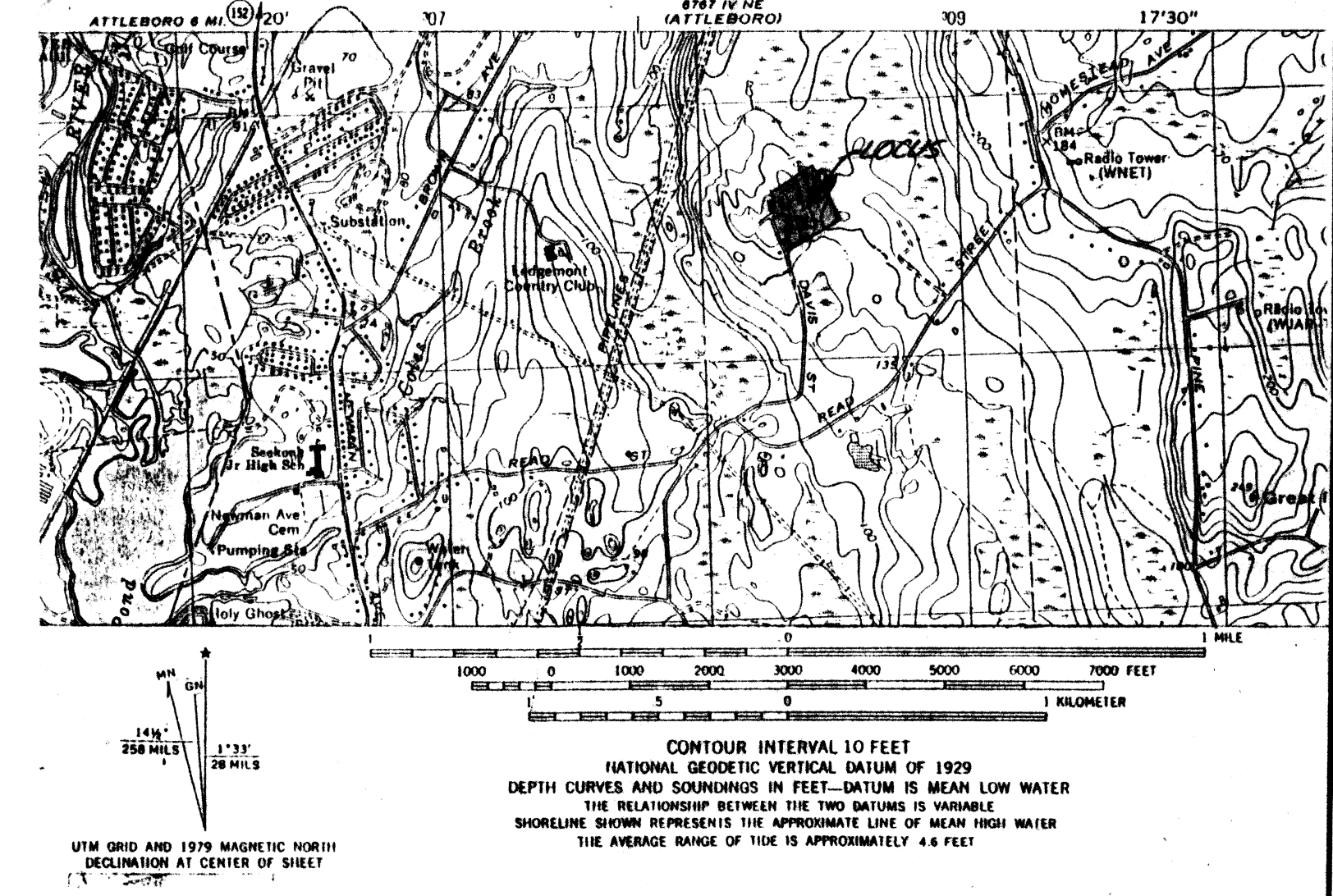
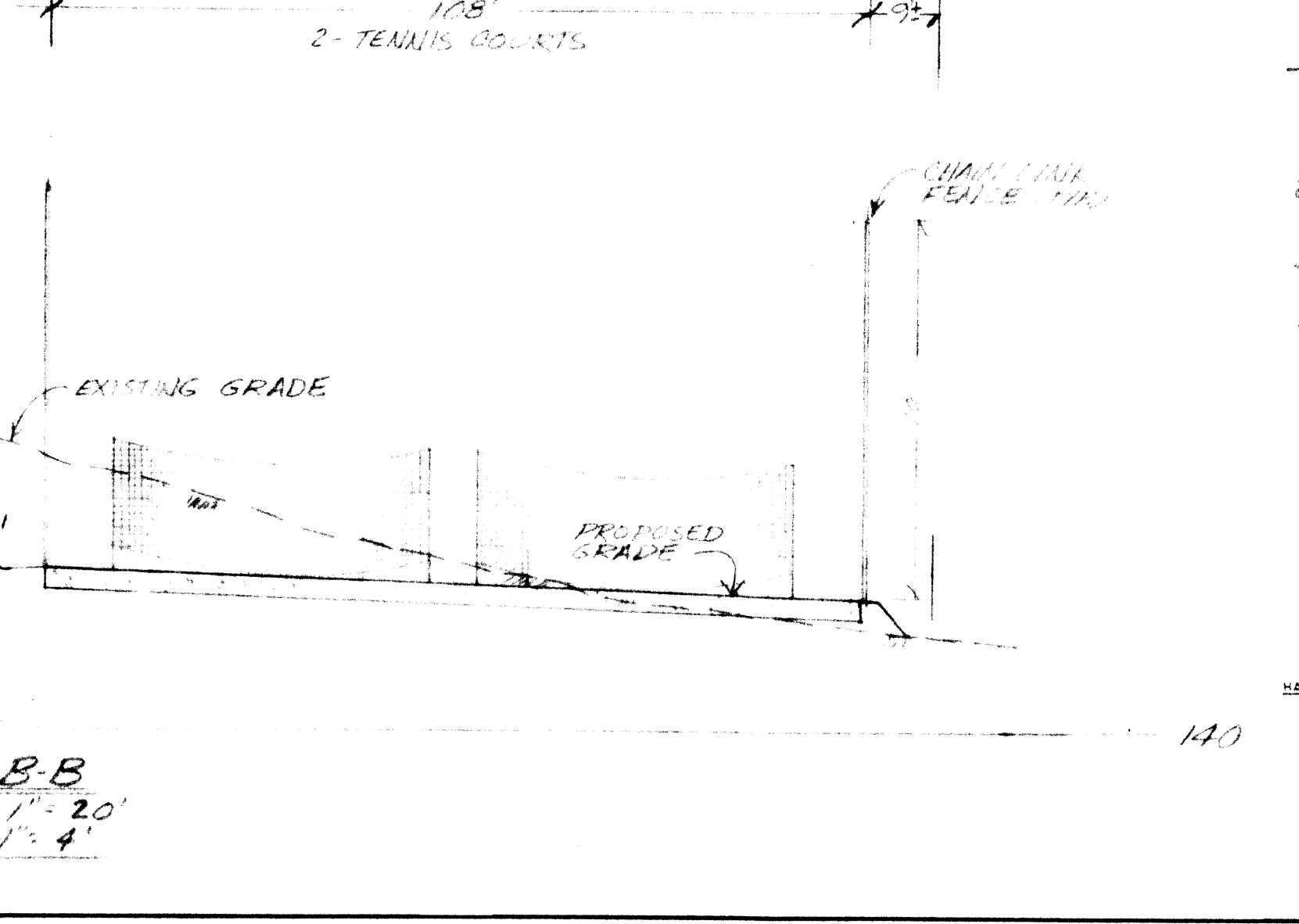
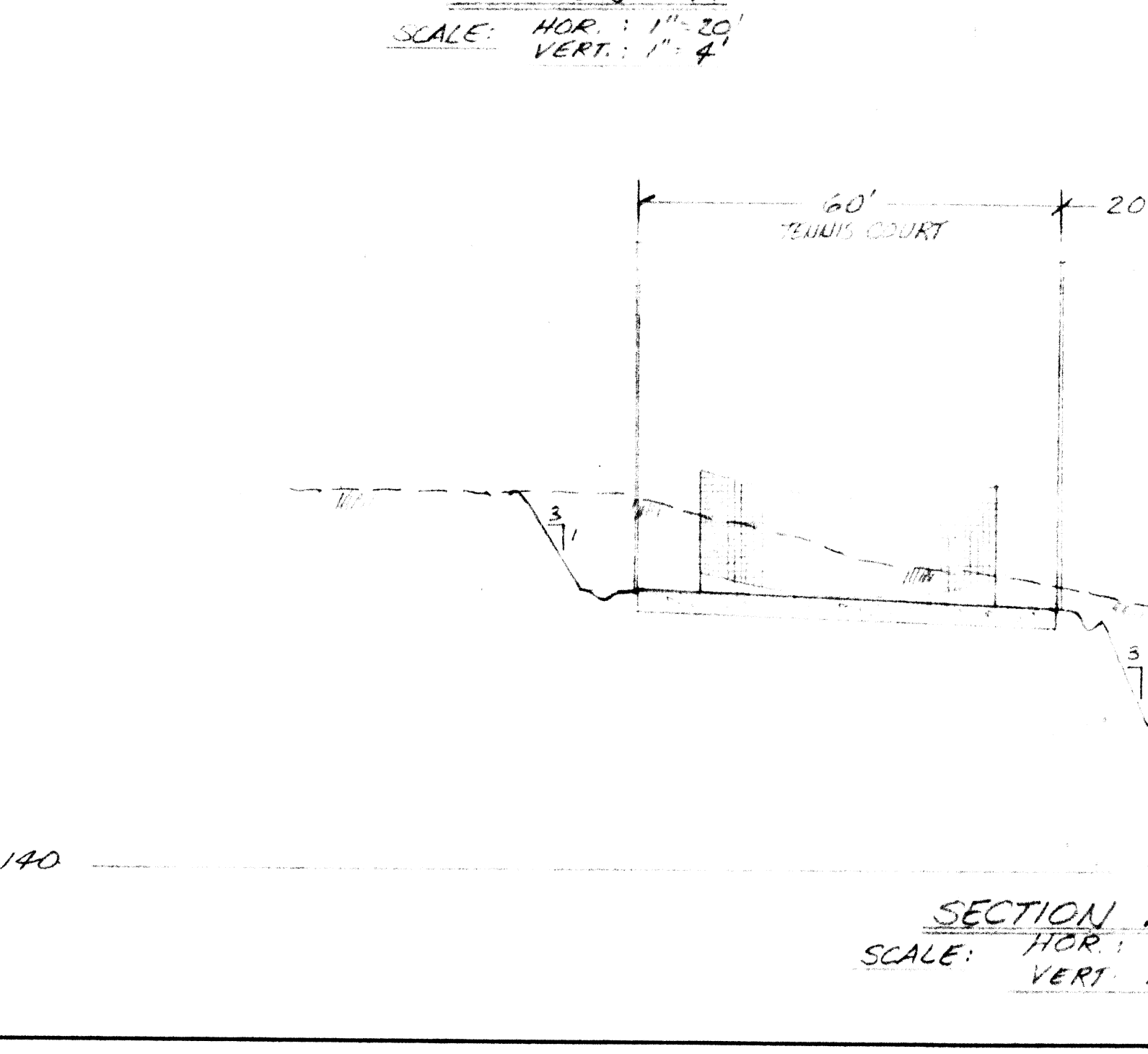
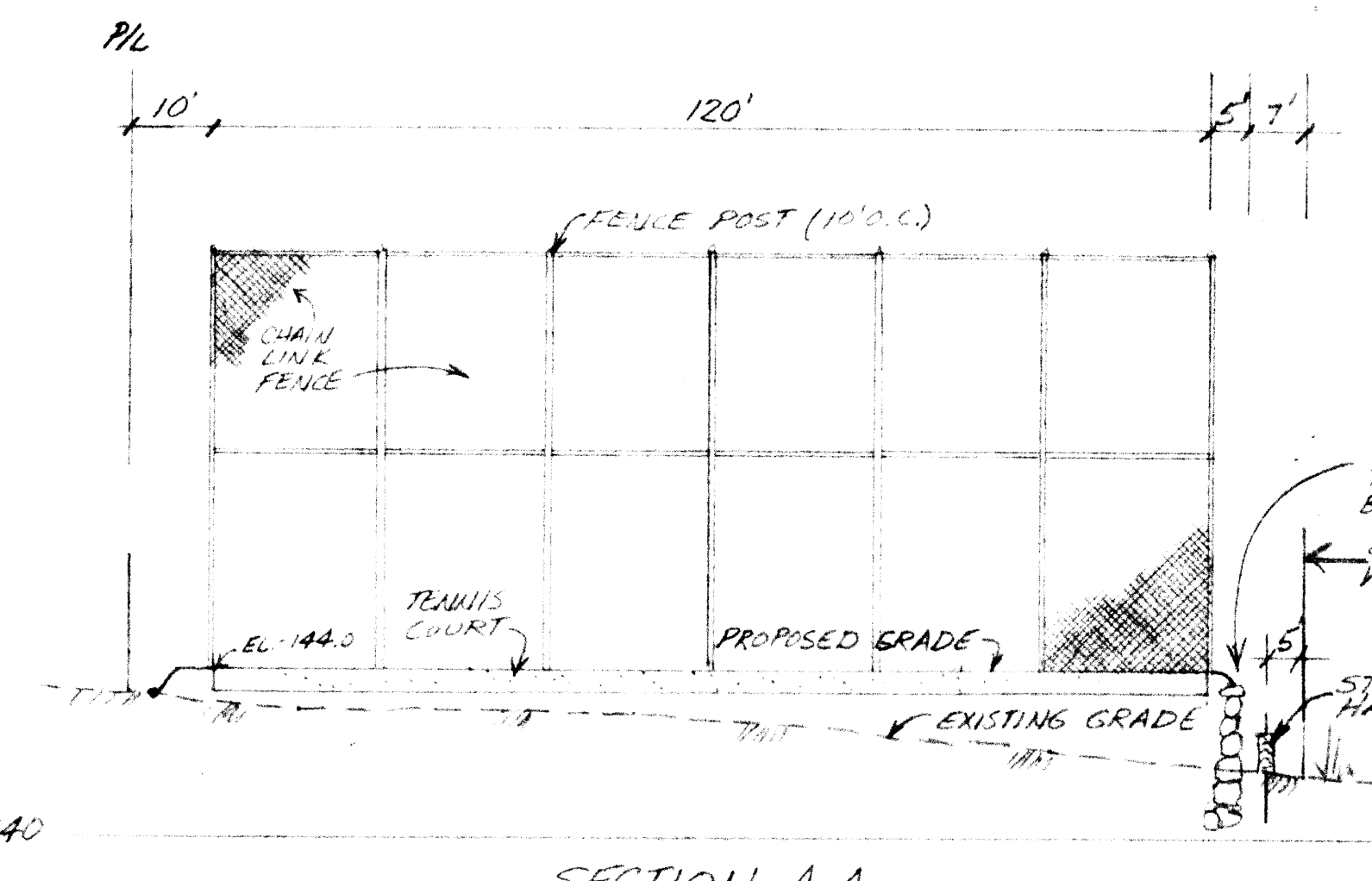
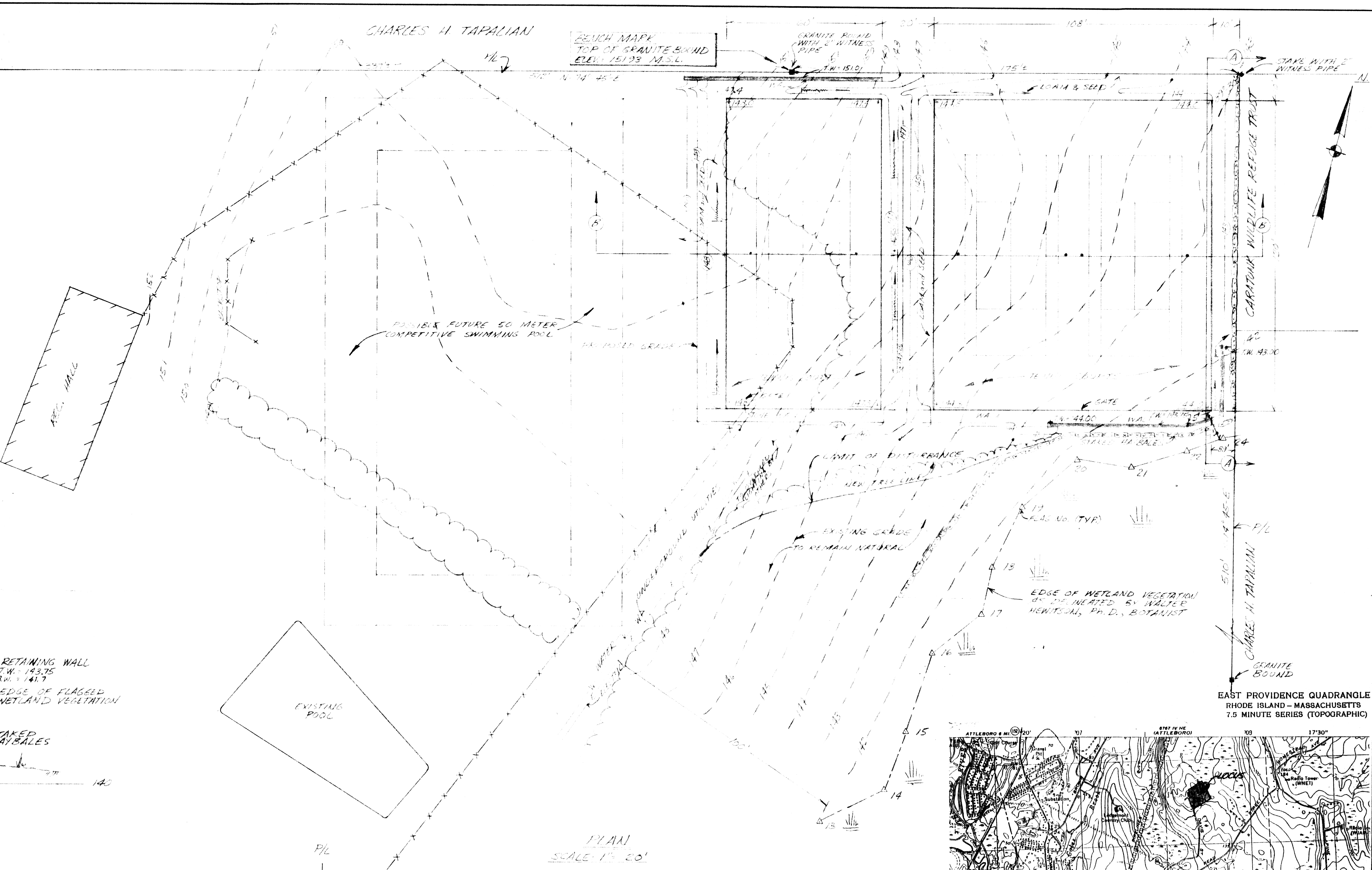
**ORIENTATION**  
For the northern states the north-south orientation is recommended. North-northeast by south-southwest at approximately 22° (true north) is recommended for outdoor courts south of the 41st parallel. Particular site characteristics, length of tennis season, and latitude should be taken into consideration when deciding on the most desirable court orientation angle.

**NOTES**  
1. SURFACE DRAINAGE: Pitch 1 in. per 10 ft. for porous and nonporous courts. Each court should be in one plane and pitch side to side, up or down to middle court.  
2. SUBSOIL DRAINAGE: Need for drainage systems depends on soil conditions.

**FAST DRYING SURFACE**  
Fast-drying courts are successive layers of crushed green stone or burnt brick and finely ground rock particles mixed with a chemical binder. This surface provides a uniform bounce and allows sliding. A sprayer system, frequent maintenance, and annual resurfacing are recommended.

**NON-POROUS NON-CUSHIONED SURFACE**  
Hot mix asphalt is a mixture of asphalt and aggregate laid in place and compacted before cooling. The surface is laid on a 4 in. base of stone, gravel or perforated macadam, depending on soil conditions.

**CLAY COURT SURFACE**  
Clay courts are constructed on a system of open drain tiles covered by a bed of gravel sandwiched between two fine layers of sand or fine gravel, and topped by a thick (3 in. to 4 in.) layer of clay. A clay surface also allows sliding and a uniform bounce.



**PLAT 26 LOT 43 AREA 75A±±± ZONE R4/GARD**

**SITE PLAN**

**SEEKONK SWIM AND TENNIS CLUB**

**255 DAVIS STREET**

**SEEKONK, MASSACHUSETTS**

**CAPUTO AND WICK LTD.**  
1150 PAWTUCKET AVE  
RUMFORD, R.I. 02916  
401-434-8880

**DATE**  
2/30/94

**SHEET**  
1 OF 1