

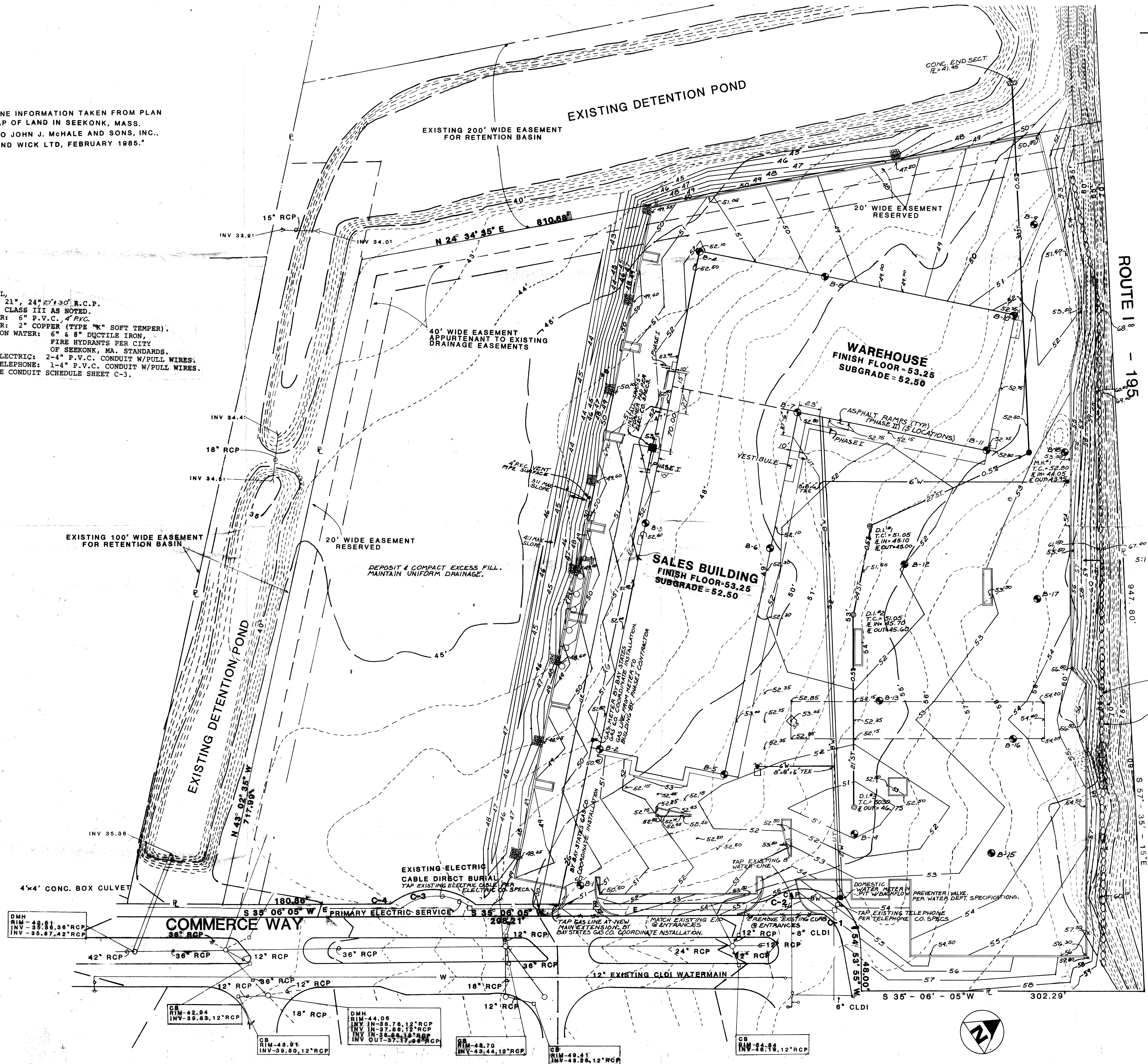
PROPERTY LINE INFORMATION TAKEN FROM PLAN ENTITLED, "MAP OF LAND IN SEEKONK, MASS. BELONGING TO JOHN J. McHALE AND SONS, INC., BY CAPUTO AND WICK LTD, FEBRUARY 1985."

UTILITY NOTES:

- 1) GAS: 2" STEEL, 21", 24" P.V.C. R.C.P.
- 2) STORM SEWER: CLASS III AS NOTED.
- 3) SANITARY SEWER: 6" P.V.C. 4" P.V.C.
- 4) DOMESTIC WATER: 2" COPPER (TYPE "K" SOFT TEMPER).
- 5) FIRE PROTECTION WATER: 6" & 8" DUCTILE IRON, FIRE HYDRANTS PER CITY OF SEEKONK, MA. STANDARDS.
- 6) UNDERGROUND ELECTRIC: 2-4" P.V.C. CONDUIT W/PULL WIRES.
- 7) UNDERGROUND TELEPHONE: 1-4" P.V.C. CONDUIT W/PULL WIRES.
- 8) CONDUITS: SEE CONDUIT SCHEDULE SHEET C-3.

LEGEND

EXISTING	PROPOSED



ROUTE 18 - 195

CURVE DATA:

- C-1
 $\Delta = 120^{\circ}50'50''$
 $R = 62.50'$
 $ARC = 131.82'$
- C-2
 $\Delta = 30^{\circ}50'50''$
 $R = 40.00'$
 $ARC = 21.54'$
- C-3
 $\Delta = 70^{\circ}40'21''$
 $R = 62.50'$
 $ARC = 70.09'$
- C-4
 $\Delta = 30^{\circ}50'50''$
 $R = 40.00'$
 $ARC = 21.54'$

PAYLESS CASHWAYS, INC.
 BUILDING MATERIALS
 2301 MAIN KANSAS CITY, MISSOURI 64108 816-234-6000

SEEKONK, MASS.
 GRADING, DRAINAGE & UTILITY PLAN
 SITEWORK

COMMONWEALTH OF MASSACHUSETTS
 MICHAEL H. DIDIER
 CIVIL
 51792

DRAWN BY: RAC
 DESIGNED BY: MDB
 CHECKED BY: DBW
 DATE: 10/11/85
 SCALE: 1" = 50'
 FACILITY NO.: 192
 DRAWING NO.: C-2 OF 5