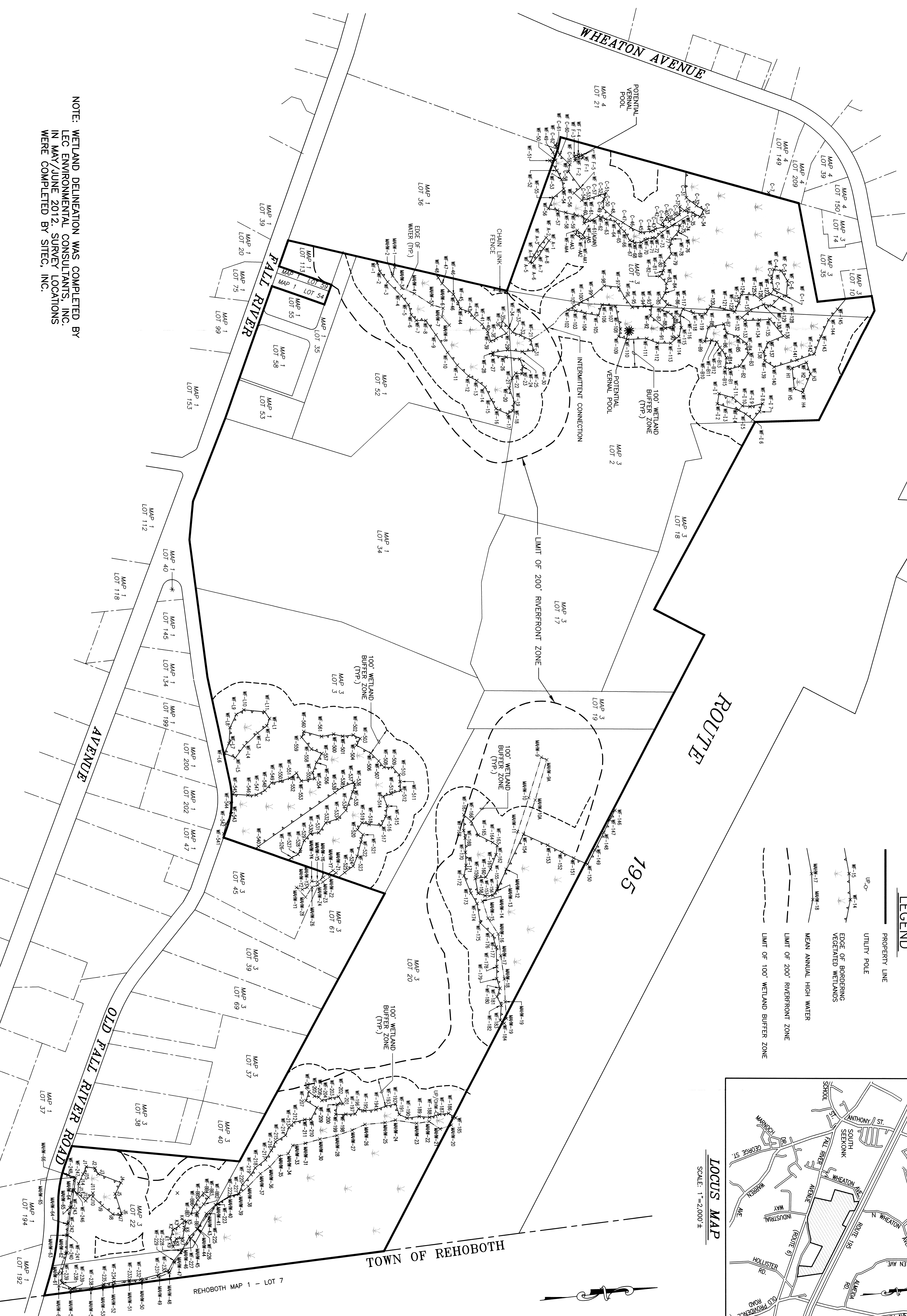
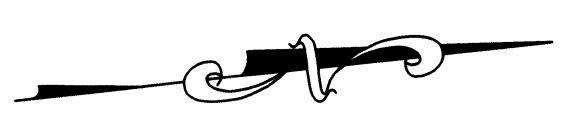
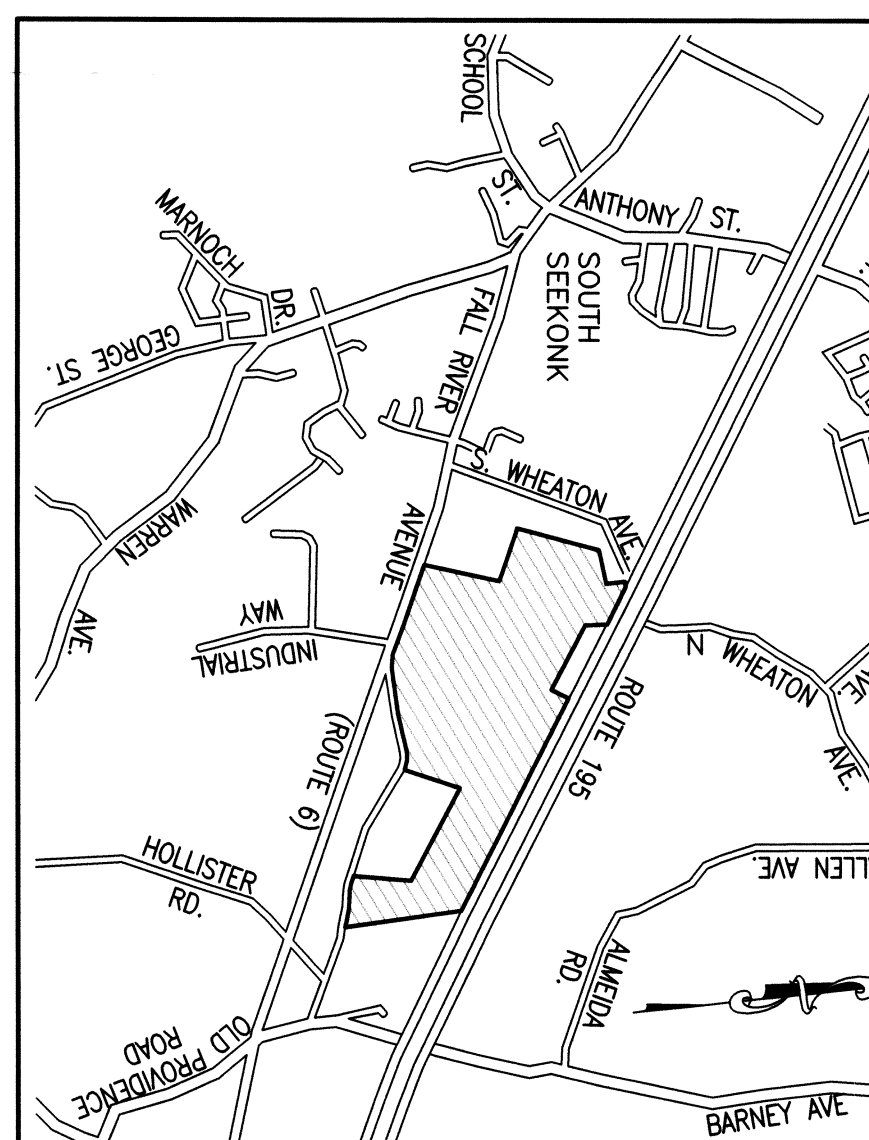


NOTE: WETLAND DELINEATION WAS COMPLETED BY  
 LEC ENVIRONMENTAL CONSULTANTS, INC.  
 IN MAY/JUNE 2012. SURVEY LOCATIONS  
 WERE COMPLETED BY SITEC, INC.



**LEGEND**

- PROPERTY LINE
- UTILITY POLE
- EDGE OF BORDERING VEGETATED WETLANDS
- MEAN ANNUAL HIGH WATER
- LIMIT OF 200' RIVERFRONT ZONE
- LIMIT OF 100' WETLAND BUFFER ZONE



69-750

**SITEC**  
 Civil and Environmental Engineering  
 Land Use Planning

SITEC, Inc.  
 449 Fauce Corner Road  
 Dartmouth, MA 02747  
 (508) 998-2125  
 FAX (508) 998-7554

APR 16 2013

SEEKONK CONSERVATION

project: VENDITTI FAMILY, LP  
 FALL RIVER AVENUE  
 SEEKONK, MASSACHUSETTS

client: VENDITTI FAMILY, LP

drawing title: WETLAND DELINEATION PLAN

scale: 1"=150'±

date: AUGUST 20, 2012

drawn: NAD

checked: SDG

approved: SDG

sheet 1 of 1  
 drawing number: WDP-1

No.	Date	Revision Description	Chkd. by	Appvd. by
1	4/11/13	REVISE WETLAND DELINEATION	SDG	SDG

Acord No. SN112-S113  
 WETLAND DELINEATION/DWG  
 File No. 12-5113