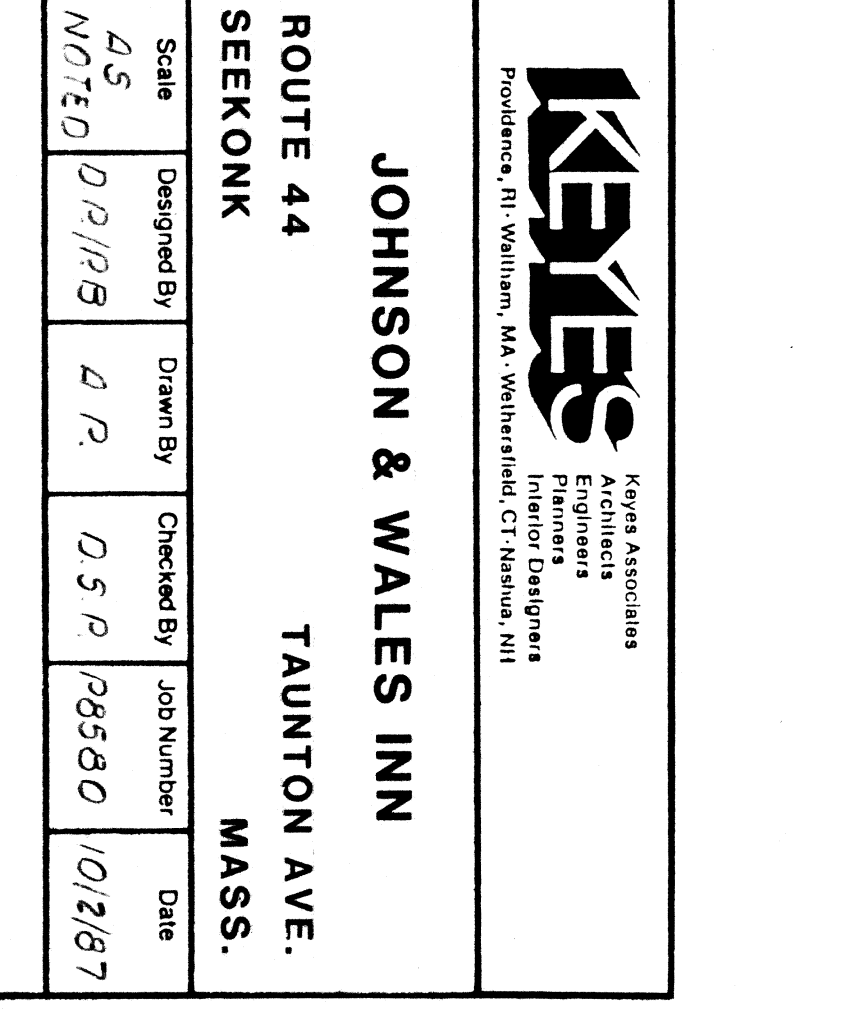
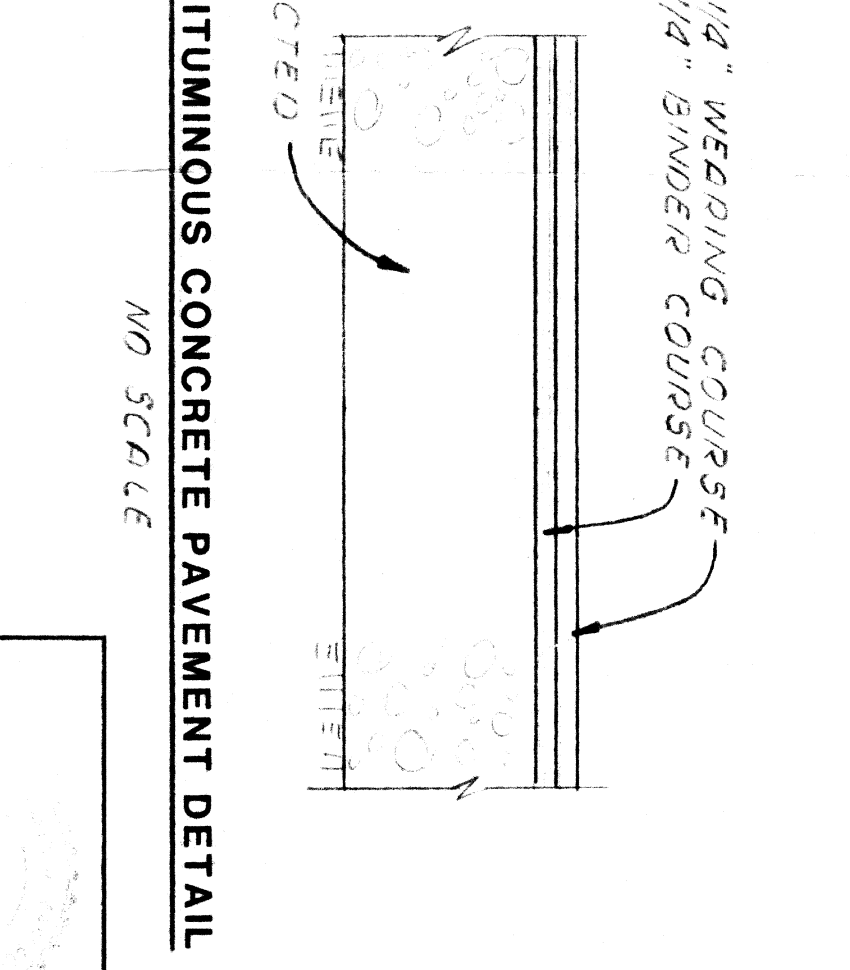
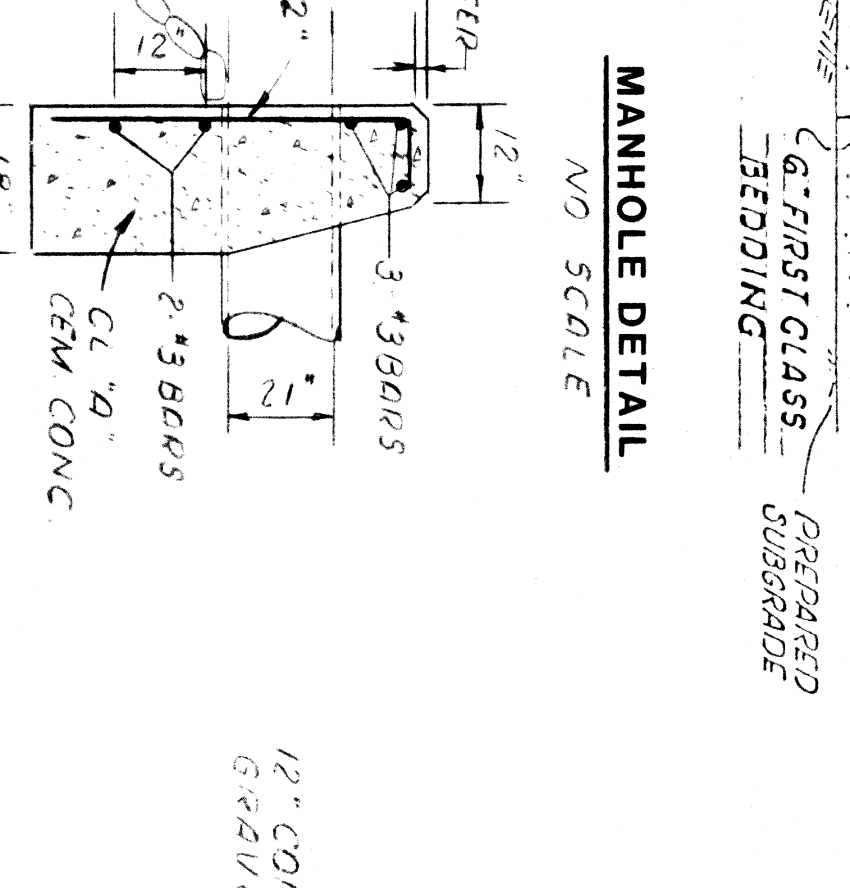
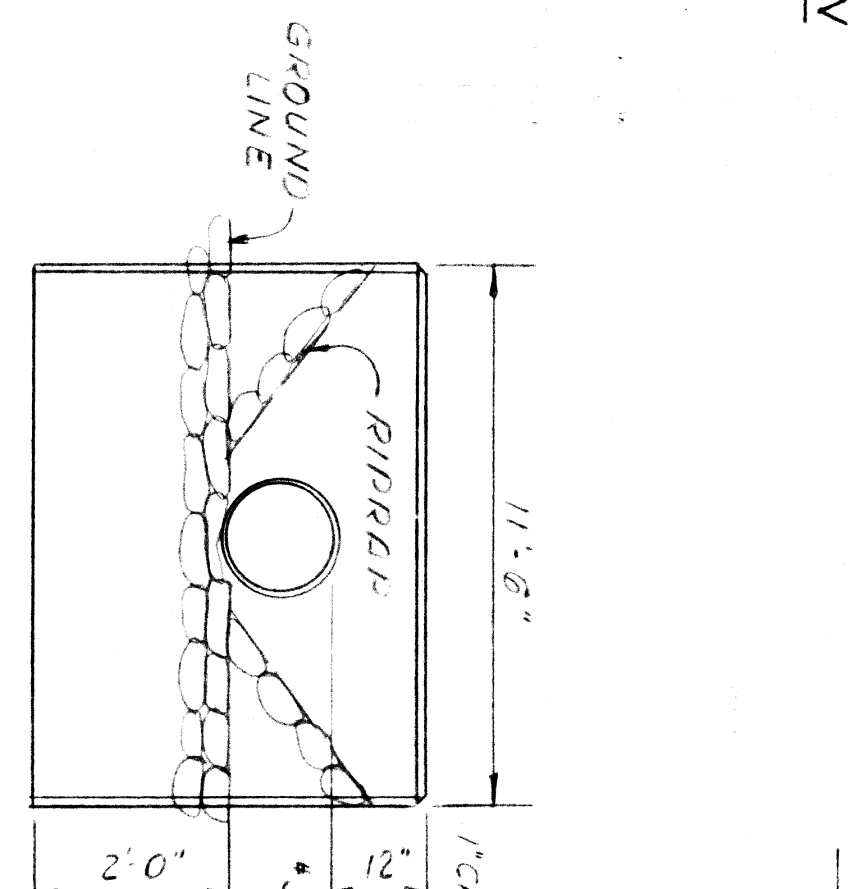
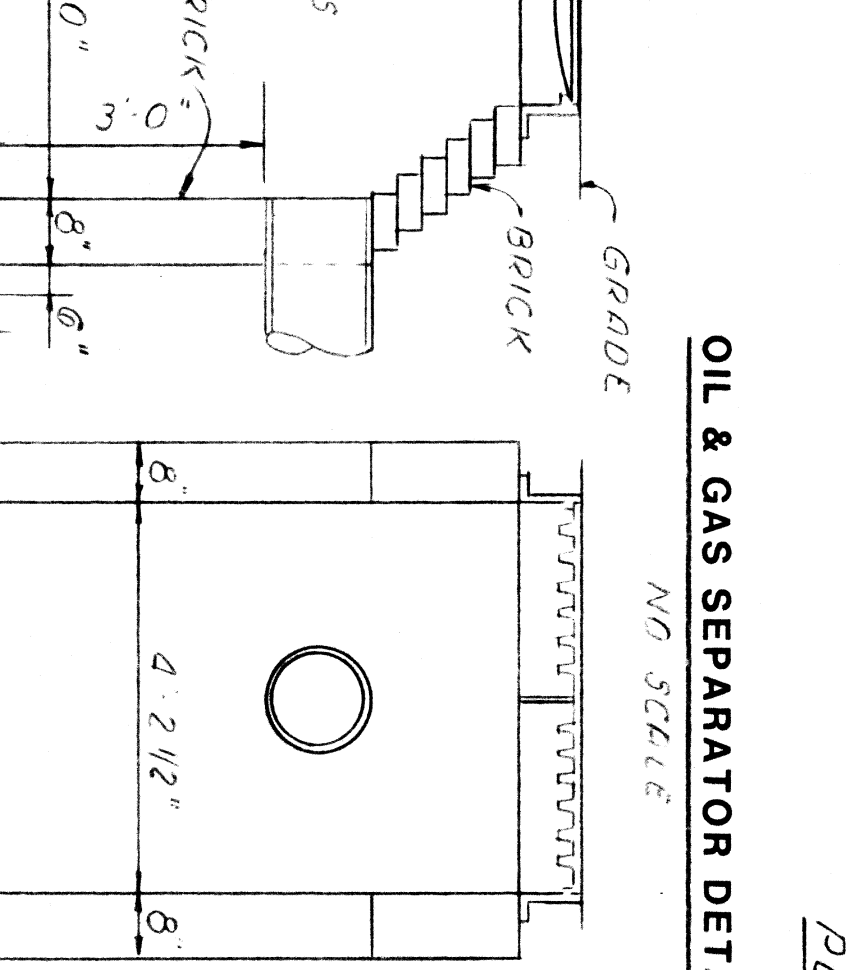
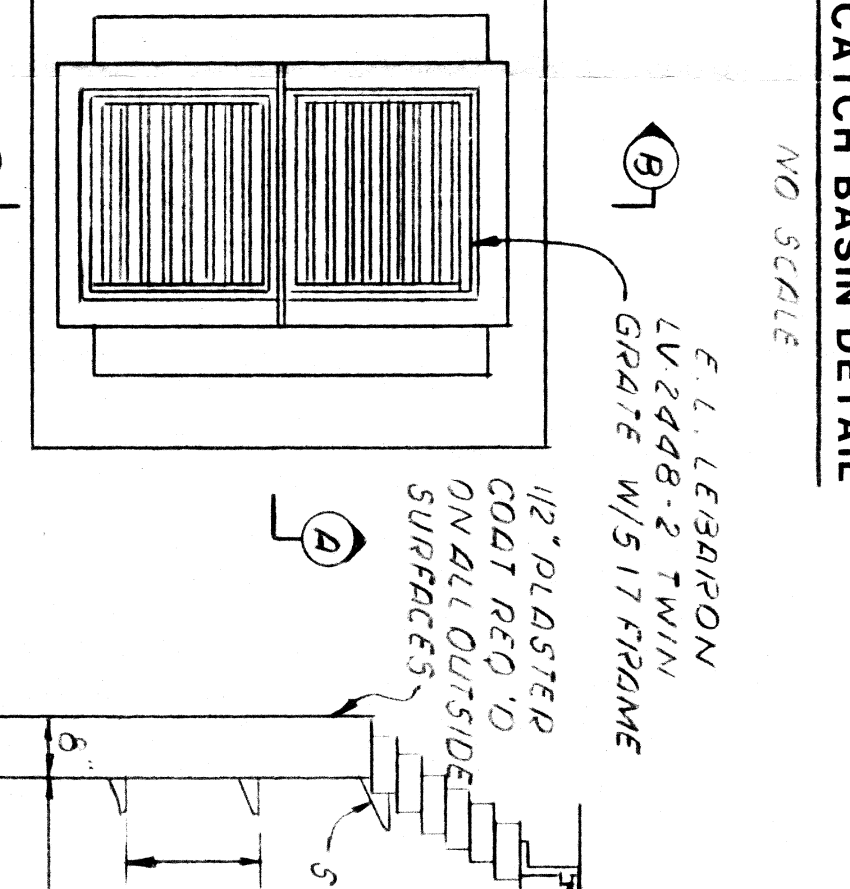
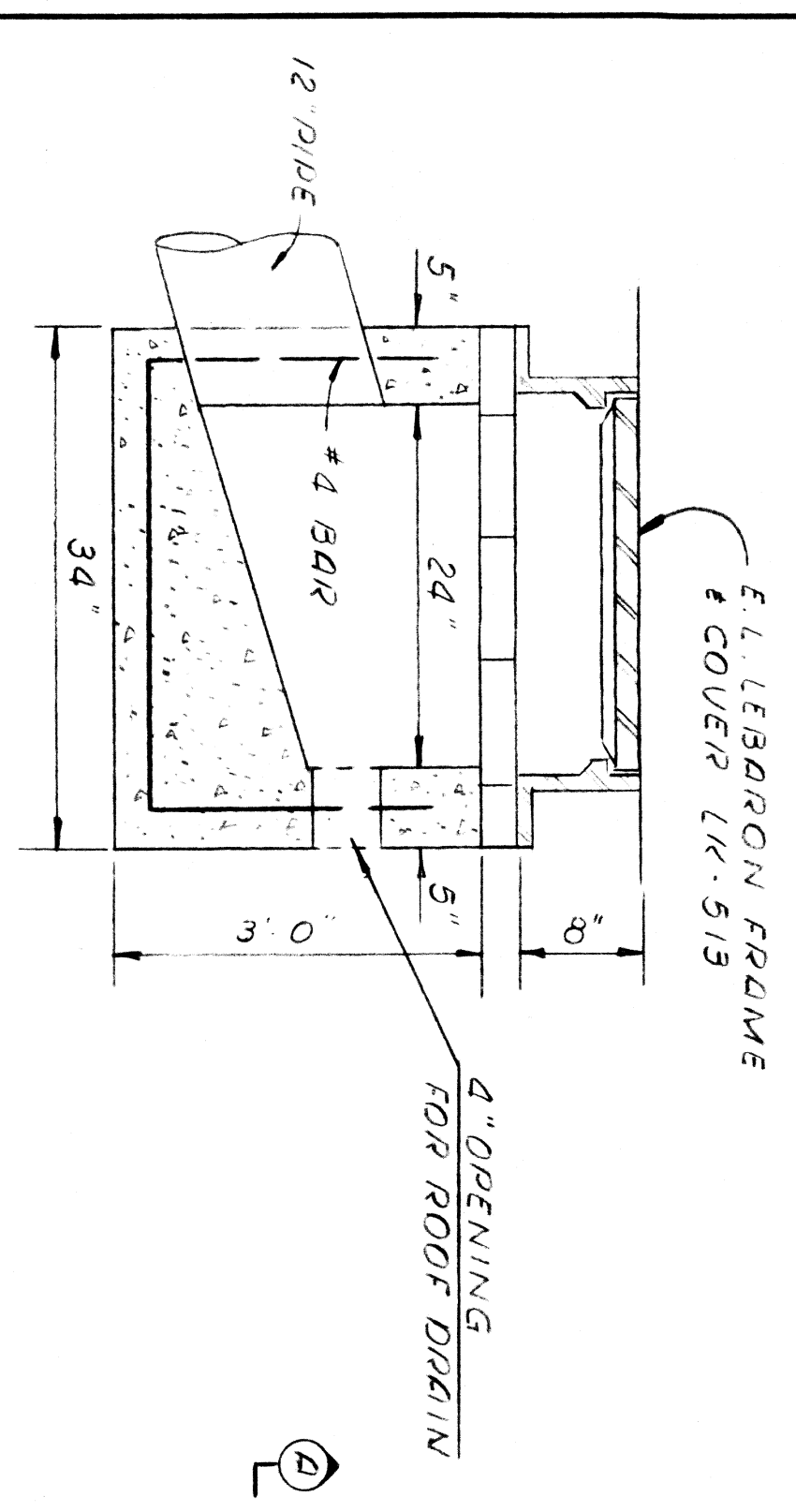
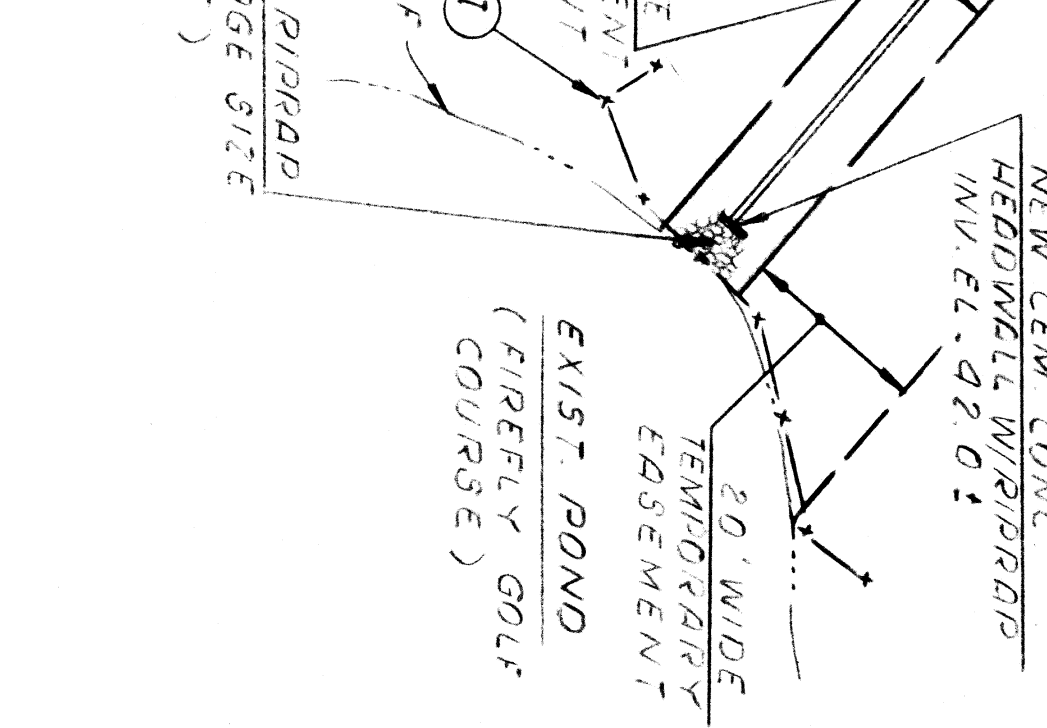
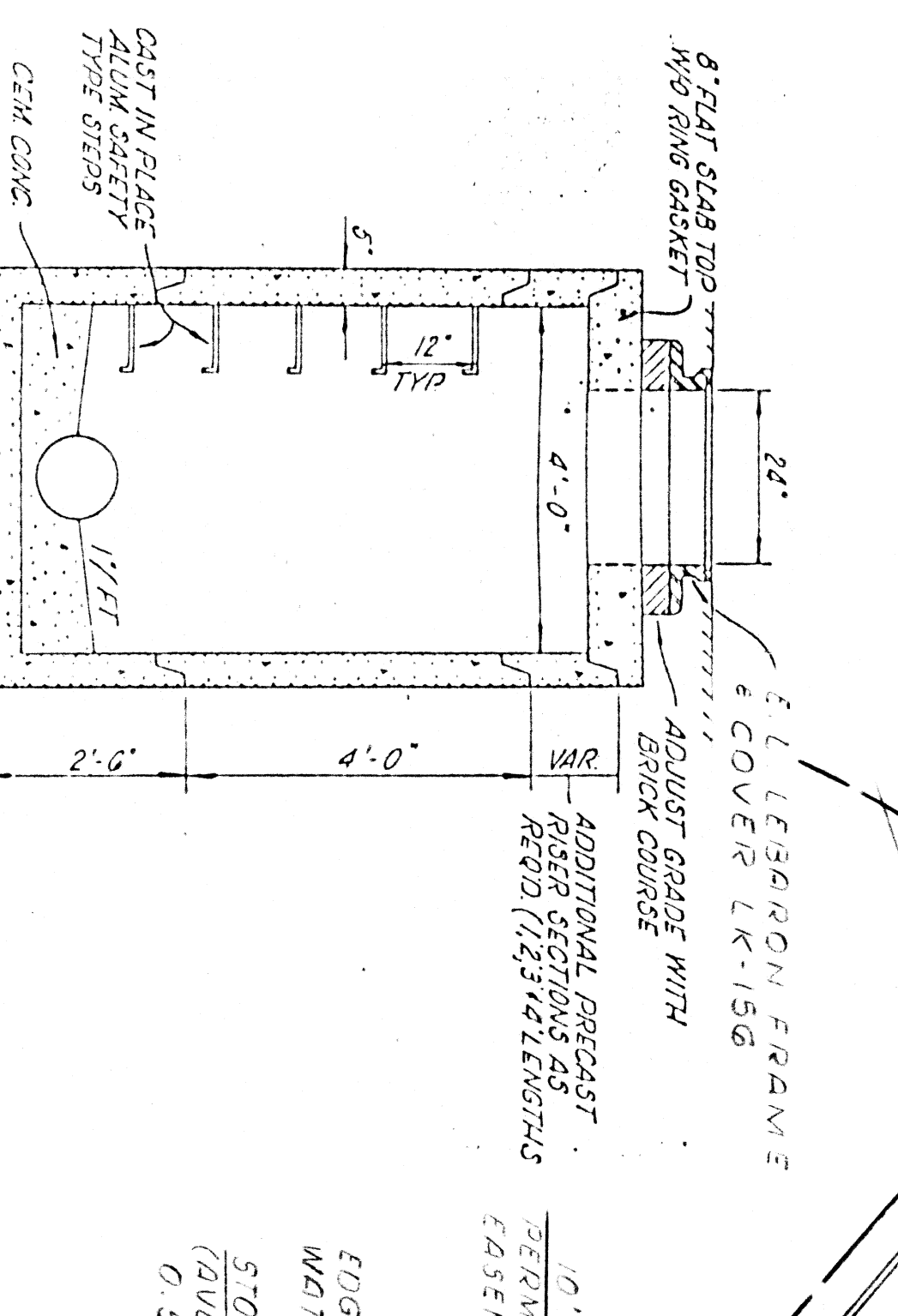
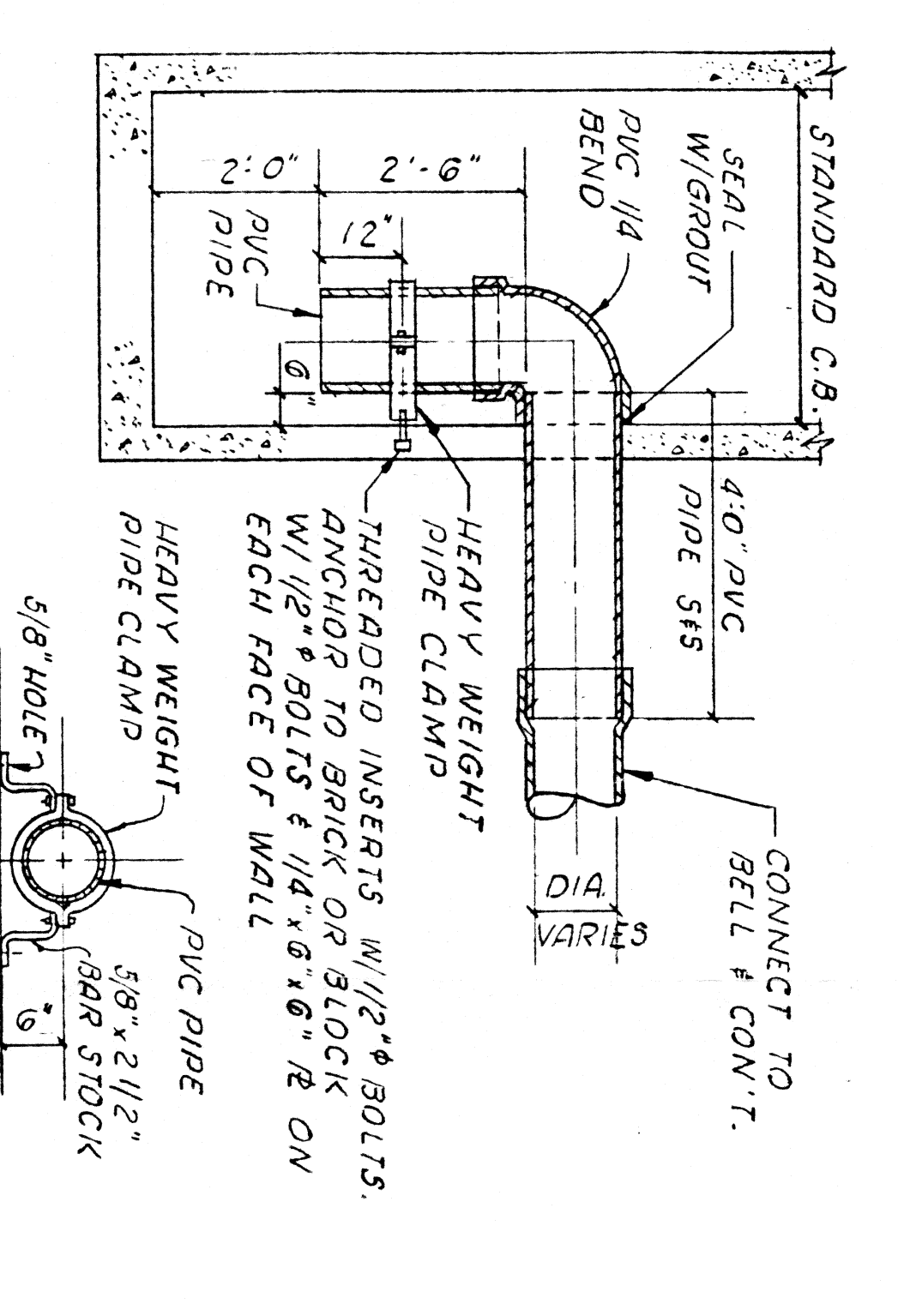
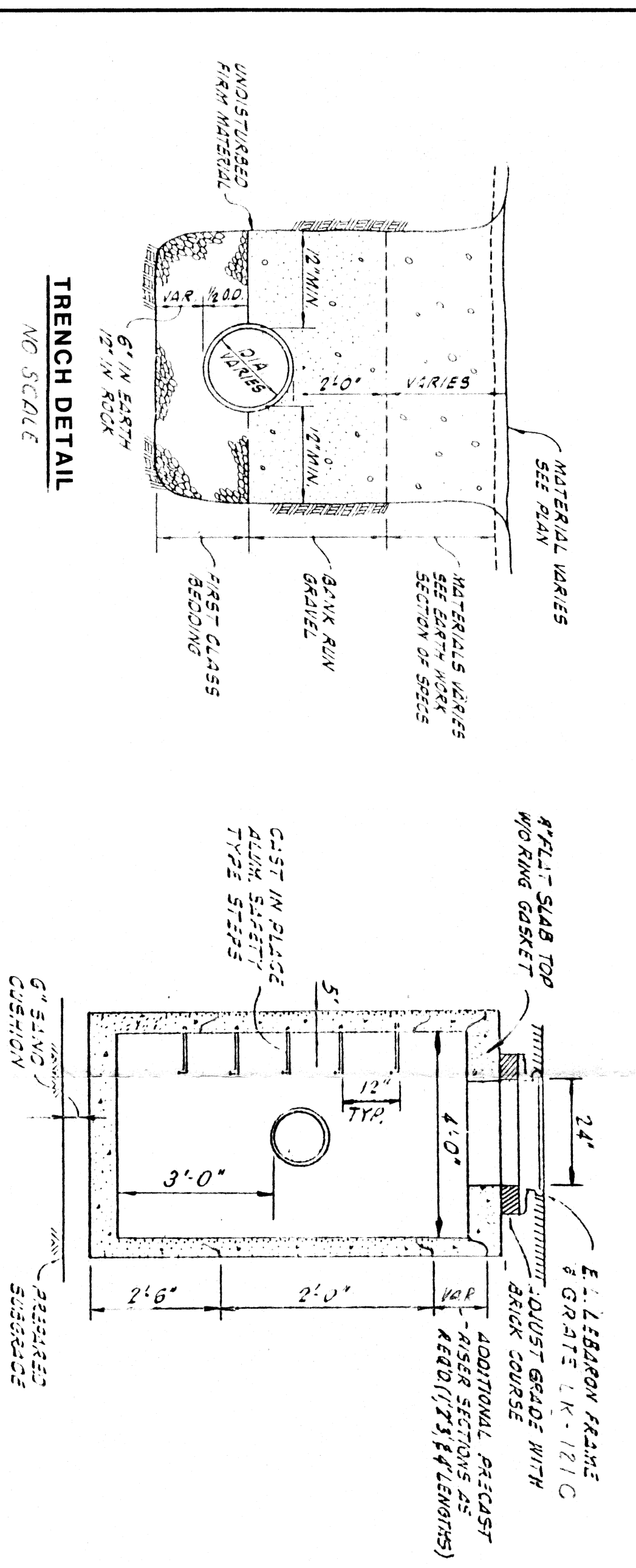
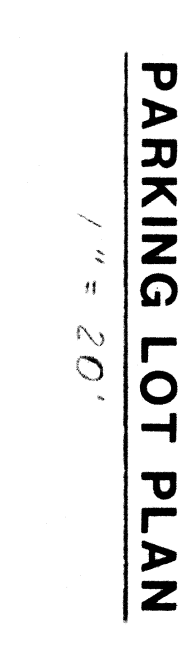
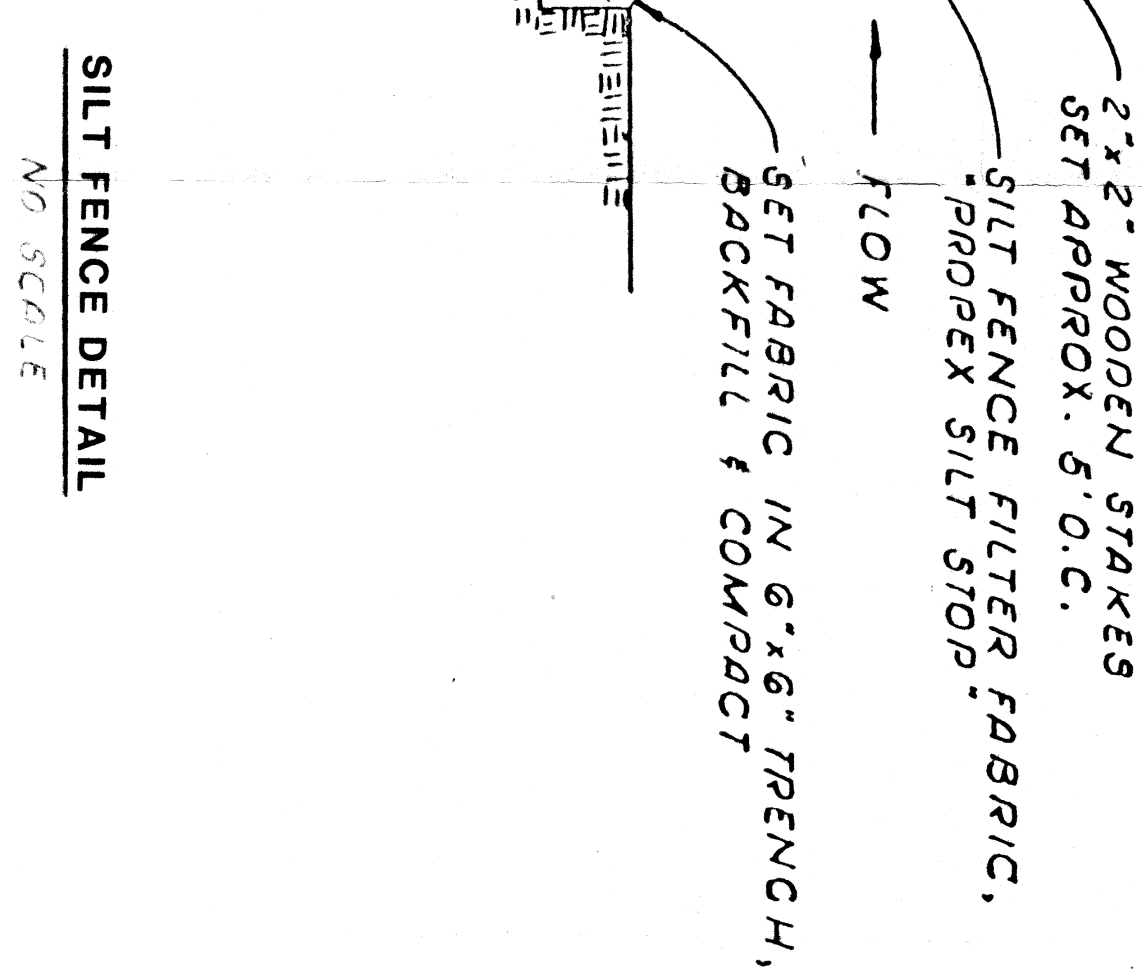


- GENERAL NOTES**
- 1 SURVEY CONDUCTED BY STANLEY ENGINEERING INC ON DECEMBER 1985
 - 2 BASE OF ELEVATION IS MEAN SEA LEVEL
 - 3 THE CONTRACTOR TO PROVIDE ALL EROSION & SILTATION CONTROL MEASURES AS REQUIRED DURING WORK SUCH AS EXCLOSURE MARKING AND SILT FENCING.
 - 4 THE CONTRACTOR TO REMOVE AND DISPOSE OFFSITE THE EXISTING BIT CONCRETE DRIVE WALK AND EDGTS DOWN TO SUBGRADE BEFORE THE PLACING OF COMPACTED GRAVEL.
 - 5 THE CONTRACTOR SHALL PROVIDE SUBGRADE TO 12 SECON TOP OF CURB AT NEW PAVEMENT AREAS.



- LEGEND**
- 65 --- EXISTING CONTOUR
 - 65 --- NEW CONTOUR
 - 67.17 --- NEW SLOPE GRADE
 - 67.17 --- EXISTING LIGHT POLE & BASE
 - 67.17 --- EXISTING U.G. ELEC. COND.
 - 67.17 --- EXISTING ELEC. MANHOLE
 - 67.17 --- EXISTING SANITARY SEWER
 - 67.17 --- NEW STORM DRAIN
 - 67.17 --- NEW CATCH BASIN
 - 67.17 --- NEW MANHOLE
 - 67.17 --- NEW DOUBLE CATCH BASIN
 - 67.17 --- NEW CONG. BLOCK WALL
 - 67.17 --- NEW PRECAST CONG CURB
 - 67.17 --- EXIST. PRECAST CONG CURB
 - 67.17 --- R 40 SIPHON CHAMBERS
 - 67.17 --- NEW STEEL BEAM GUARD RAIL
 - 67.17 --- NEW 21/2\"/>
 - 67.17 --- R 40 EXIST. CONC. WALK
 - 67.17 --- NEW 4\"/>
 - 67.17 --- NEW PAVEMENT 10\"/>
 - 67.17 --- REMOVE & SLURGE CURB

KAYES PROFESSIONAL ENGINEERS
 1000 WASHINGTON STREET, SUITE 100
 WASHINGTON, MASSACHUSETTS 01983

JOHNSON & WALES INN
 ROUTE 44
 SEEKONK
 TAUNTON AVE.
 MASS.

Scale: AS
 Date: 10/21/87
 Drawn by: D.P.
 Checked by: J.S.N.
 Design: 10/19/87
 Date: 10/21/87

SITE & DRAINAGE PLAN
 SITE ENGINEERING SE-1