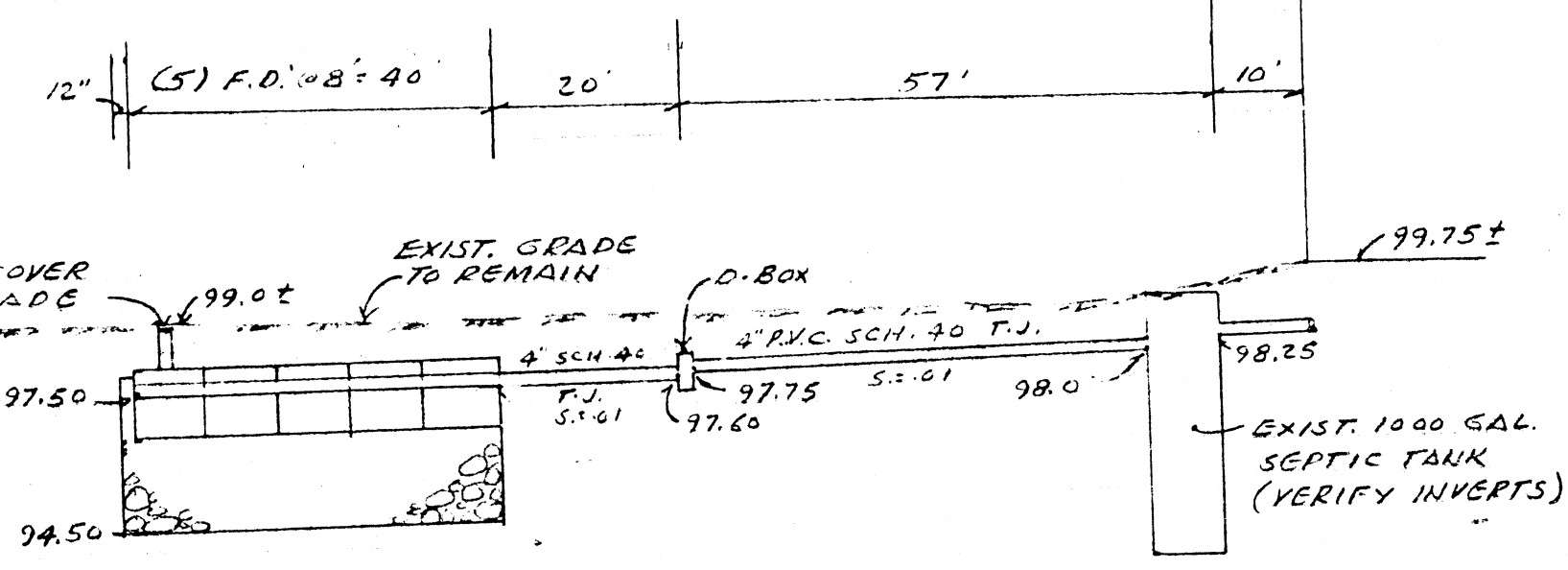
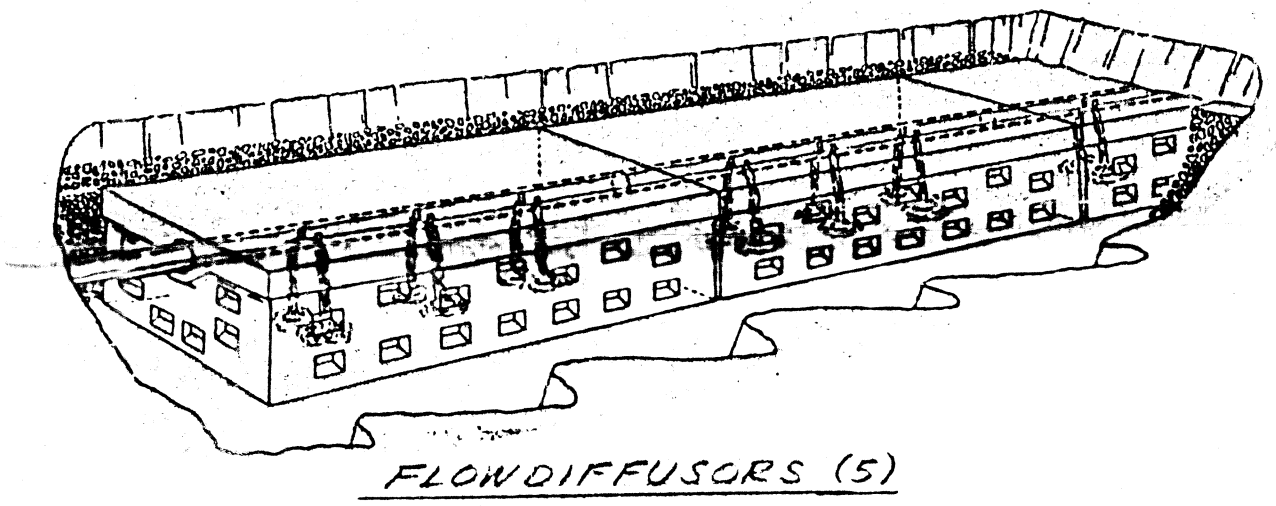
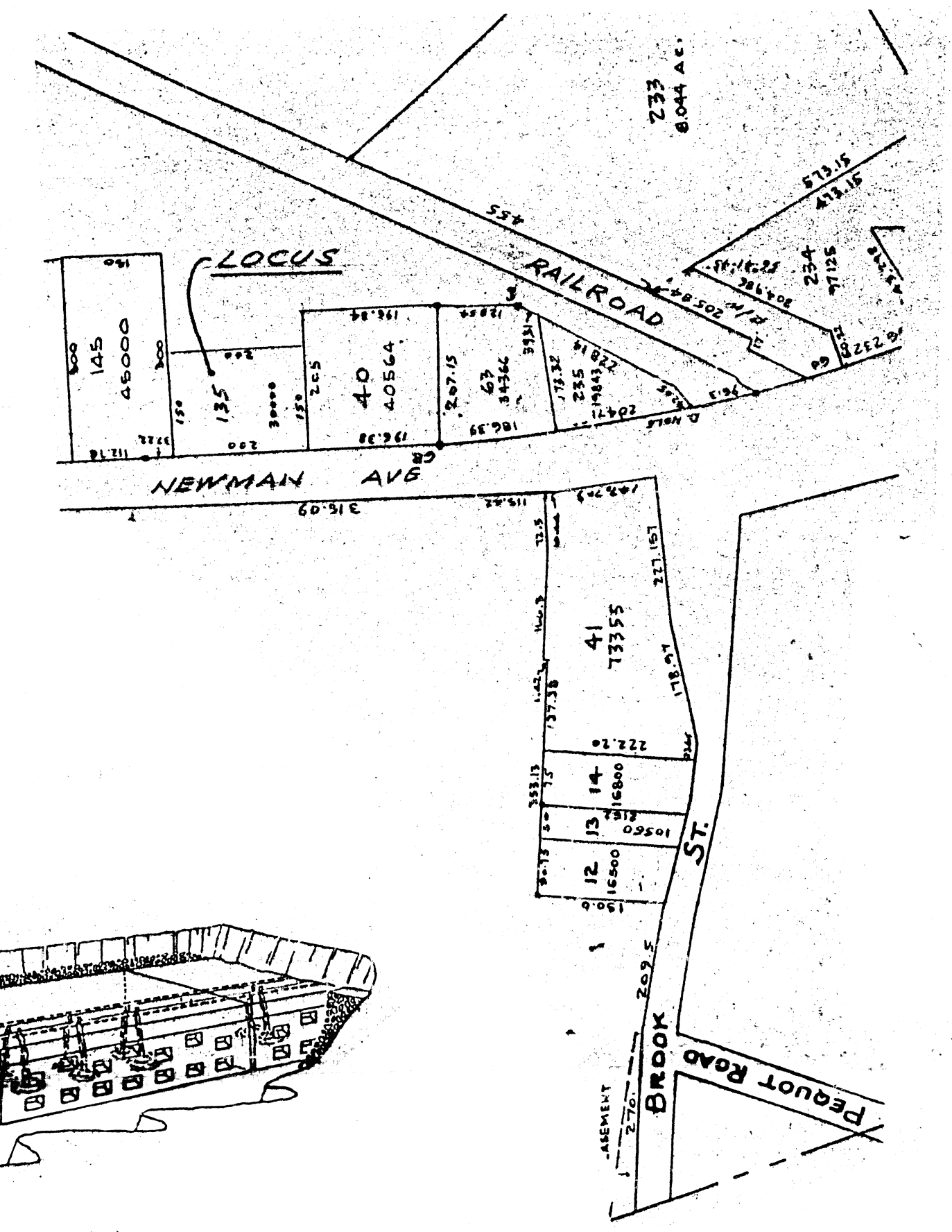
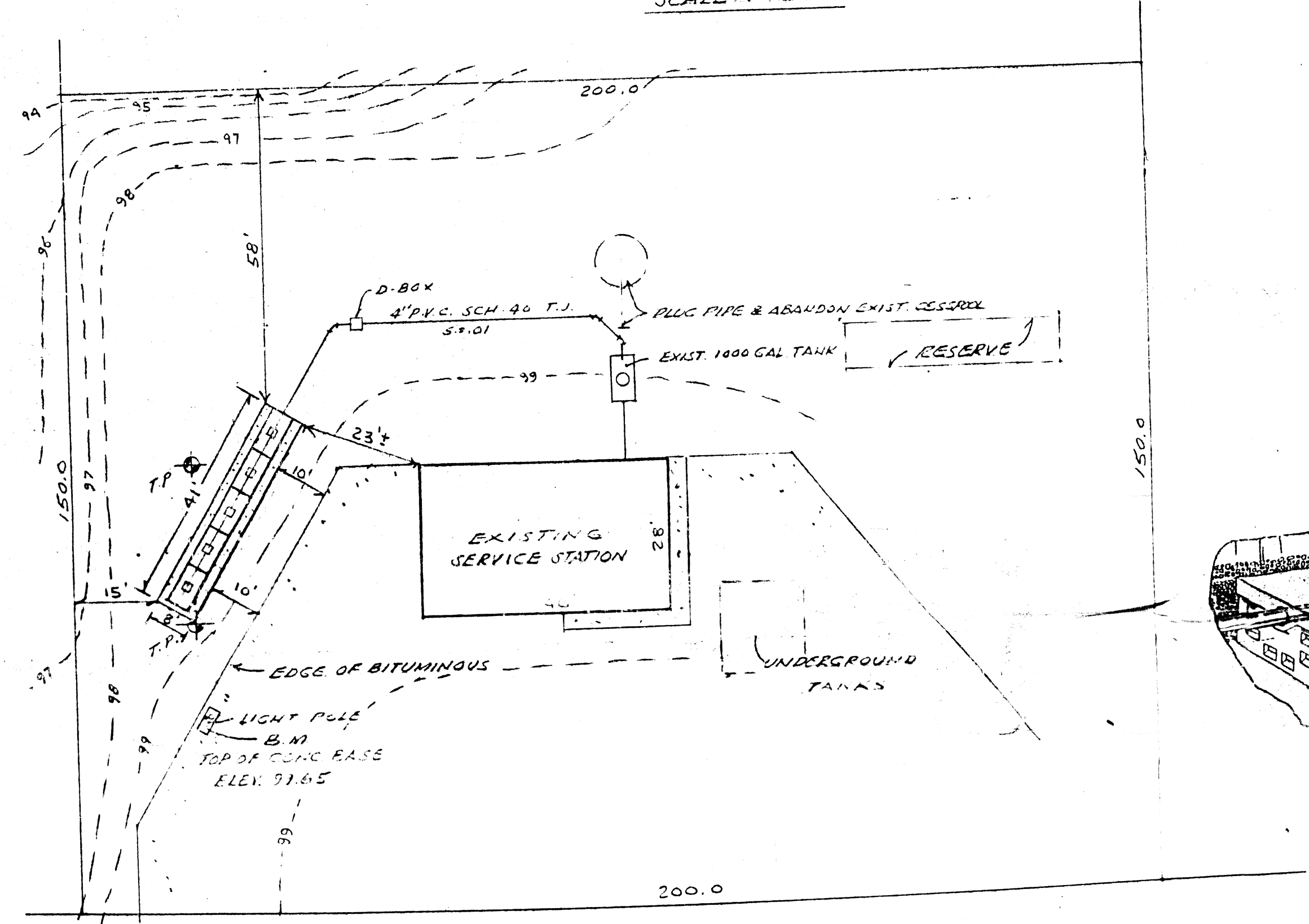
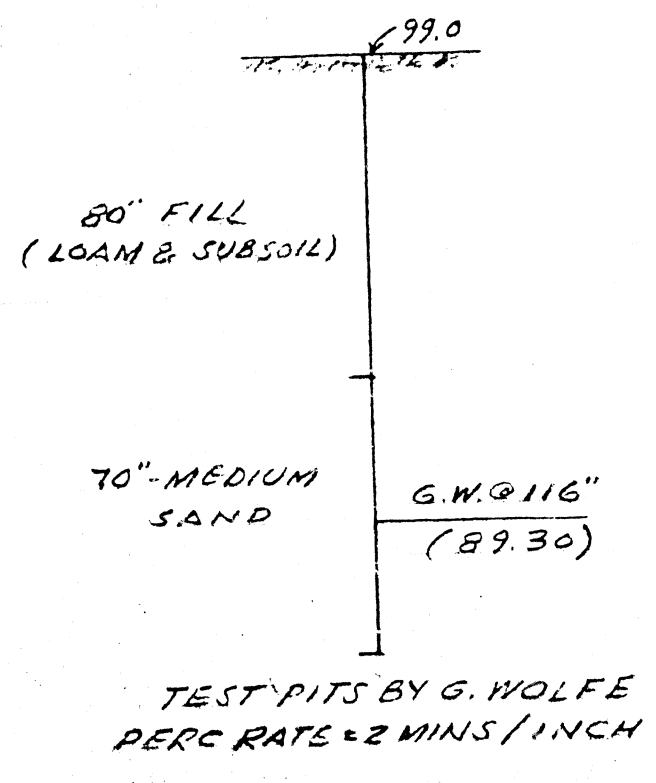


PLAN
SCALE: 1" = 20'



NOTE:
STRIP ALL FILL TO ELEV 92.0'
IN THE AREA OF THE SYSTEM &
10' BEYOND & REPLACE WITH
CLEAN GRAVEL WITH PERCOLATION
RATE OF 2 MINS/INCH OR LESS.

DESIGN DATA
(3) ISLANDS = 300 GPD = 600 GPD
PLUS 50% = 900 GPD
USE (5) FLOWDIFFUSORS, 4' x 8' WITH
24" OF STONE BELOW & 12" ON END
SIDE: 41' x 2 SIDES x 3.0 x 2.5 GALS/S.F. = 615 GALS.
BOTTOM: 41' x 8' x 1.0 GALS/S.F. = 328 GALS.
TOTAL = 943 GALS.



HIGHEST G.W. ELEV. 90.5 BY
GOLDMAN ENVIRONMENTAL
CONSULTANTS, INC. 3/7/90.

PROFILE
HOR.: 1" = 20'
SCALE: VERT.: 1" = 10'

69-246

SEWAGE DISPOSAL REPAIR
TEXACO STATION
SEEKONK, MASS.
PLAT 27 LOT 135 AREA = 30,000 S.F.

DATE
11/16/90
SHEET
1 OF 1