

BENCH MARK
TOP OF HYDRANT
SHAPLE
ELEV. 26.51

CONNECTED TO WATER MAIN IN PARK ST.
AP 28 LOT 109
STEVEN S. HOWITT
(INDUSTRIAL)
EXISTING SYSTEM

AP 28 LOT 5
(INDUSTRIAL)

AP 28 LOT 4
SHIPLEY B. HOWITT
(INDUSTRIAL)

120" MED. SAND
D.R.Y. @ 8.5' (81.5)
4/6/92
WITNESS: J.R. CHELNEVEET
TEST PIT 5/16/85
2" MIN. INCH

P.T. TO P.C. = 869.77

WOODLAND AVE.

NEW ENGLAND POWER CO. EASEMENT

MONTAUP ELECTRIC CO. EASEMENT

AP 28 LOT 8
GEORGE & LINDA HEBERT JR.
R/4 ZONE

APPROX. LOCATION MOBIL OIL PIPELINE

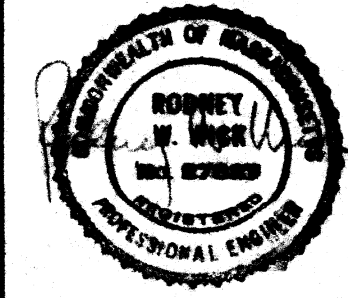
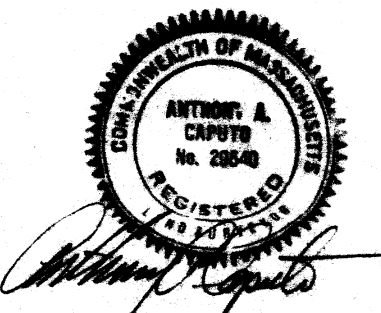
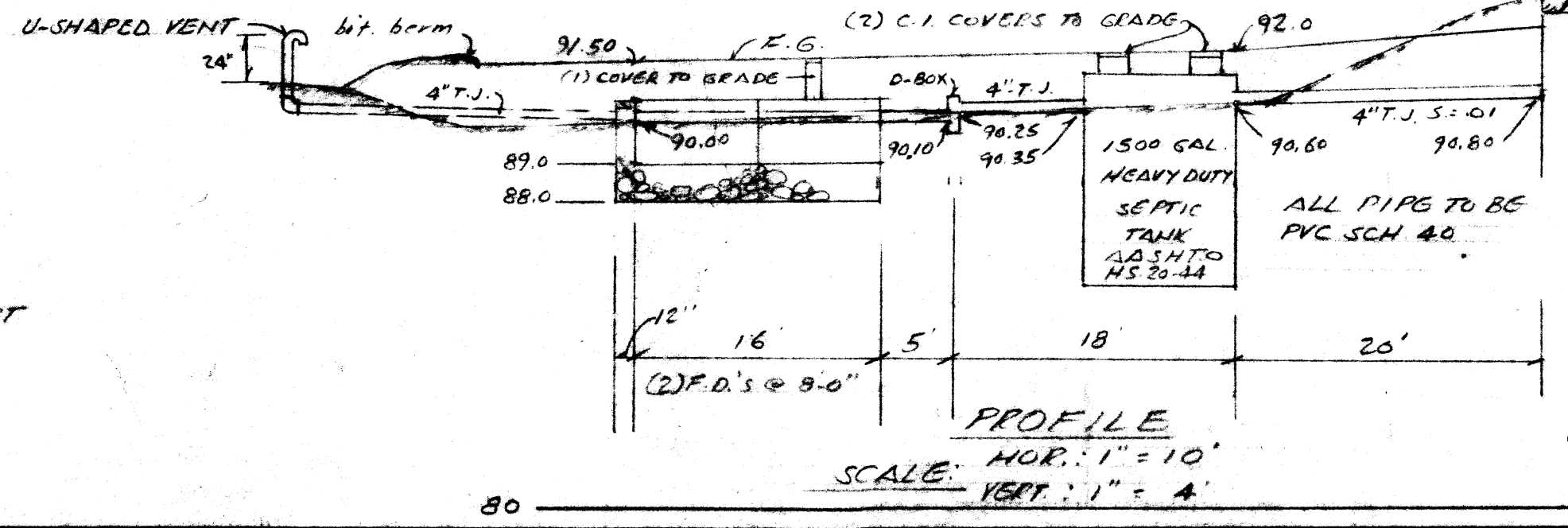
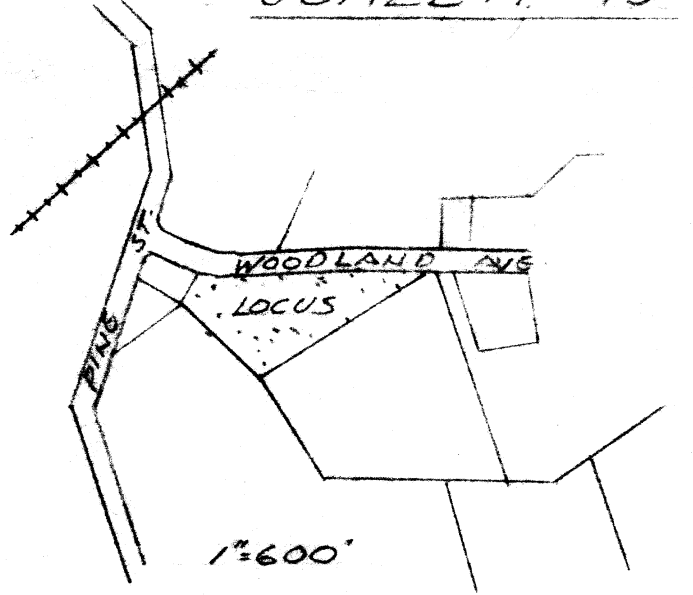
PARKING SCHEDULE

A.P. 28 LOTS 6 & 7 INDUSTRIAL ZONE, 3.12 ACRES
OWNER: STEVEN HOWITT USE: WAREHOUSE: 7,400 S.F.
3 EMPLOYEES @ 1 SPACE EACH = 3 SPACES REQUIRED

SEWAGE DISPOSAL DATA

STORAGE: 3 PEOPLE @ 20 G.P.D. + 50% = 90 G.P.D.
USE (2) FLOW DIFFUSORS, 4' x 8' WITH 12" OF STONE ON SIDES, END & BOTTOM. (ASHTO HS 20-44 LOADING)
SIDEWALL: 17' x 2 SIDES x 2.0' DEEP x 2.5 GALS/S.F. = 170 GALS
BOTTOM: 17' x 6' x 1.0 GALS/S.F. = 102 GALS
TOTAL: 272 GALS

SCALE: 1" = 40'



PROPOSED SITE PLAN
PLAT 28 LOTS 6 & 7
STEVEN HOWITT
SEEKONK, MA.

CAPUTO AND WICK LTD.
1150 PAWTUCKET AVE.
RUMFORD, R.I. 02916
401-434-8880

DATE: 4/7/92
SHEET: 1 OF 1