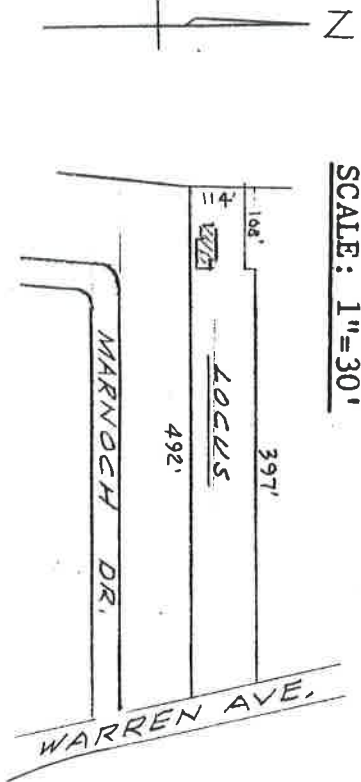


PLAN  
SCALE: 1"=30'

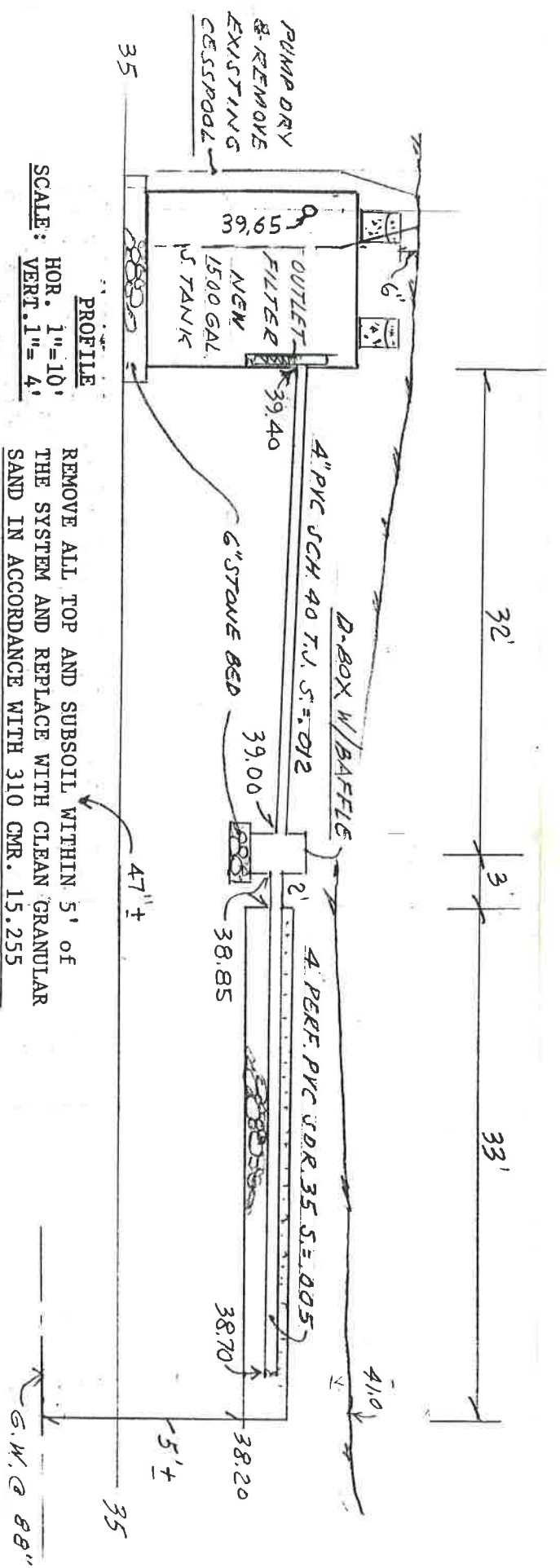
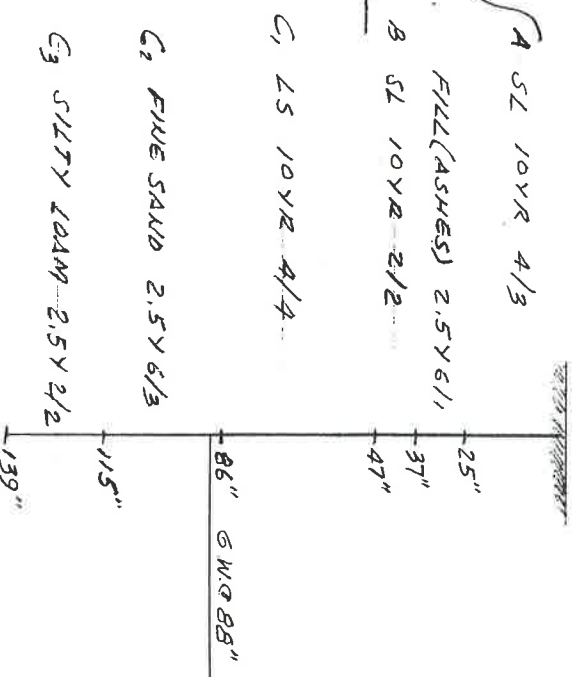
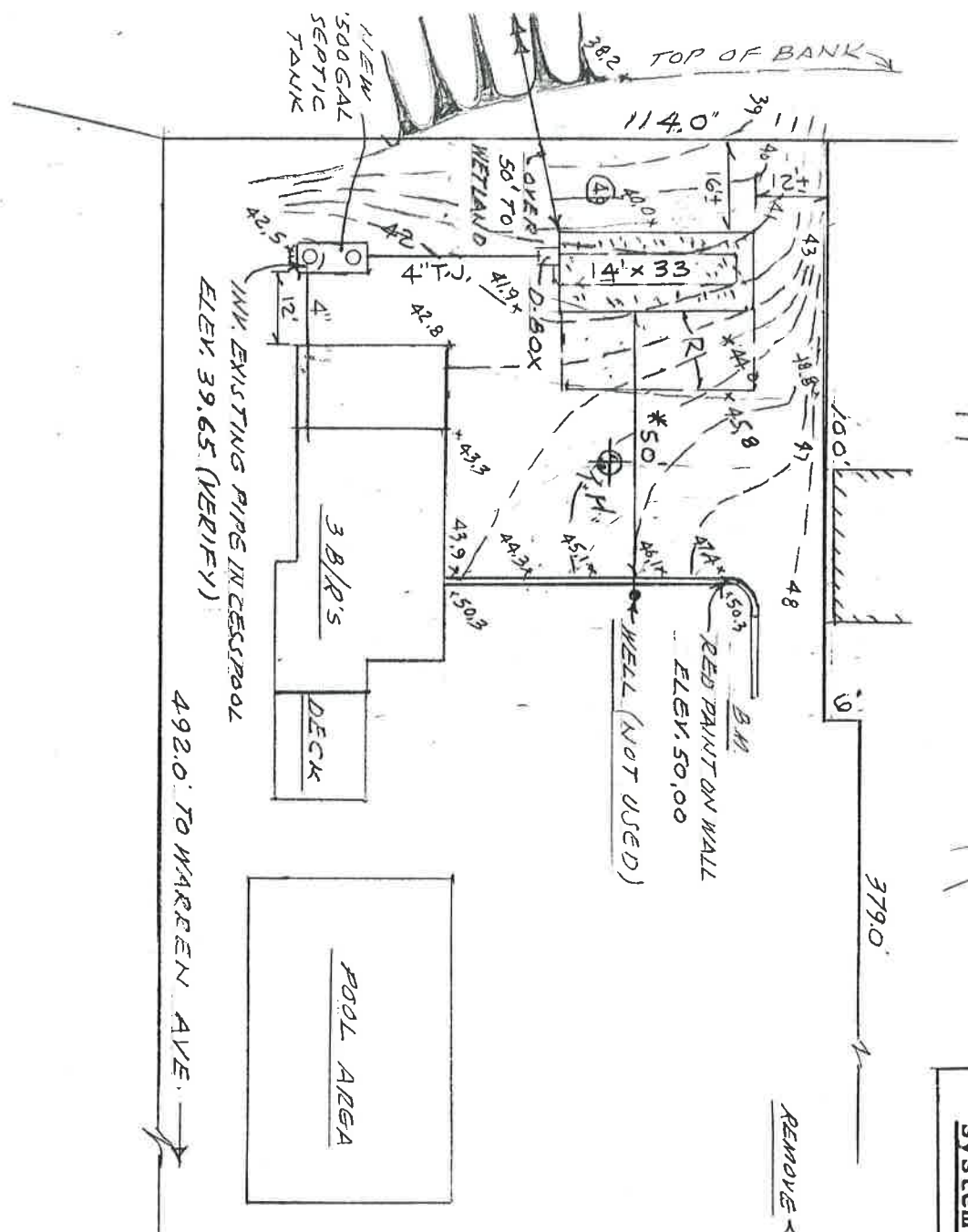


DESIGN DATA

3 BEDROOMS = 330 GPD. USE BED AT 0.74 GALS/SF  
14' x 33' = 462 SF. x 0.74 = 342 GALS/DAY

NOTE:

This system is not designed to accommodate a garbage grinder unit.  
There are no wells within 200 feet of the system or reserve area except as shown.



PROFILE  
SCALE: HOR. 1"=10'  
VERT. 1"=4'  
REMOVE ALL TOP AND SUBSOIL WITHIN 5' OF THE SYSTEM AND REPLACE WITH CLEAN GRANULAR SAND IN ACCORDANCE WITH 310 CMR. 15.255

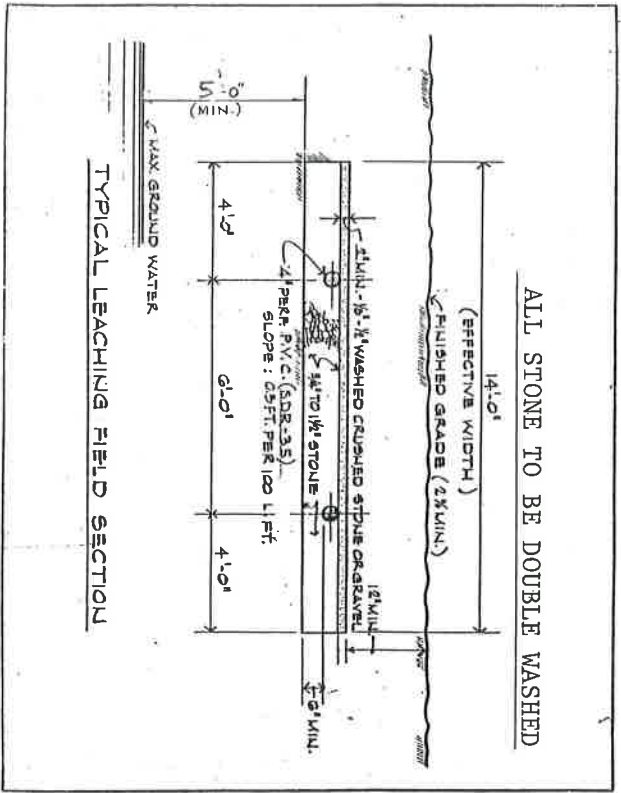
69-403



Jordan W. Wolf

SHEET 1 OF 1

SEWAGE DISPOSAL REPAIR PLAN  
MAP 2 LOT 14 AREA = J.32 AC.  
NO. 189 WARREN AVE,  
SEKONK, MASSACHUSETTS  
BY GORDON WOLFE, RS.  
AUGUST, 1998  
SCALE: AS SHOWN



Zabel A1800 Residential Septic Tank  
Effluent Filter Specifications

Application: Single family homes.  
Flow Rate: 800 gpd.  
Material: High density polyethylene (HDPE).  
Dimensions: 14" x 14" x 14" (overall).  
Weight: 15 lbs.

Questions concerning The Zabel A1800 Effluent Filter please call 1-800-321-3742 or Fax (508) 267-8801 for further information.