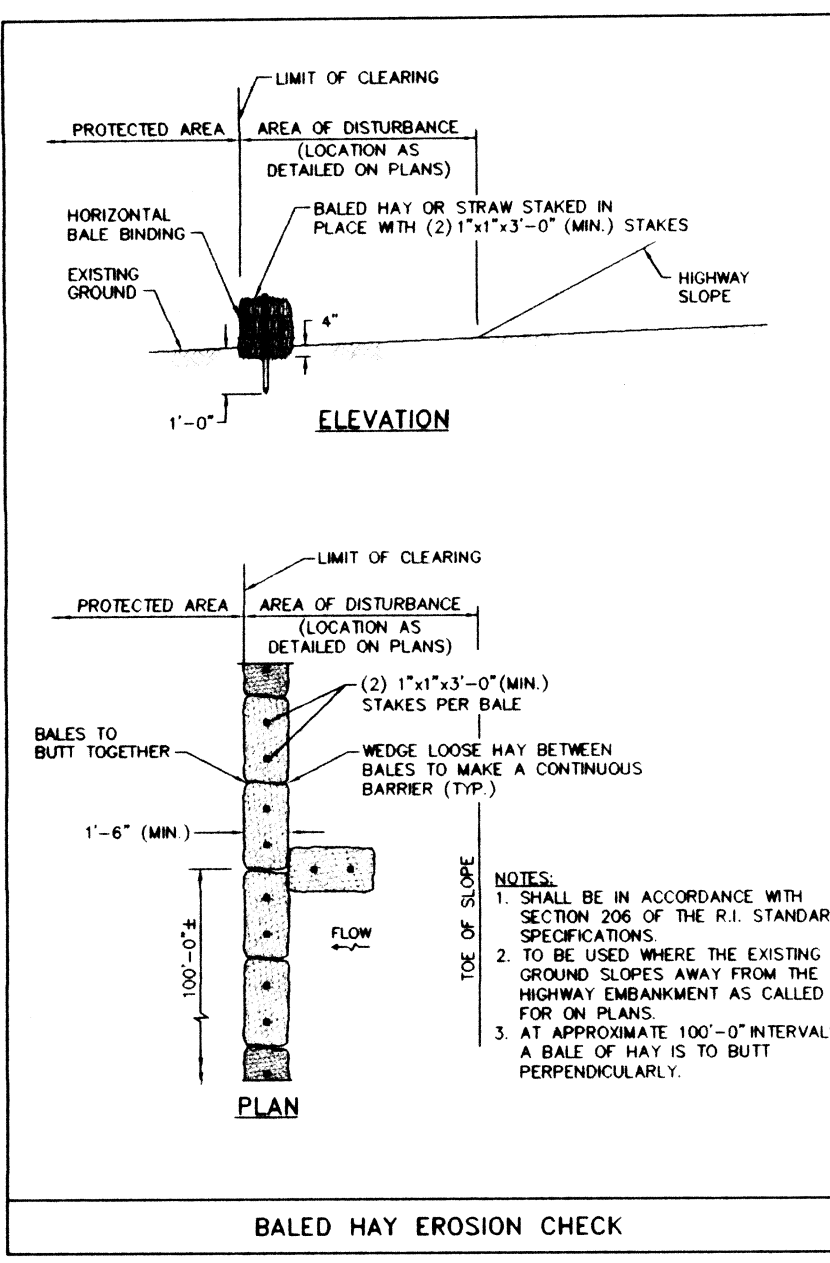
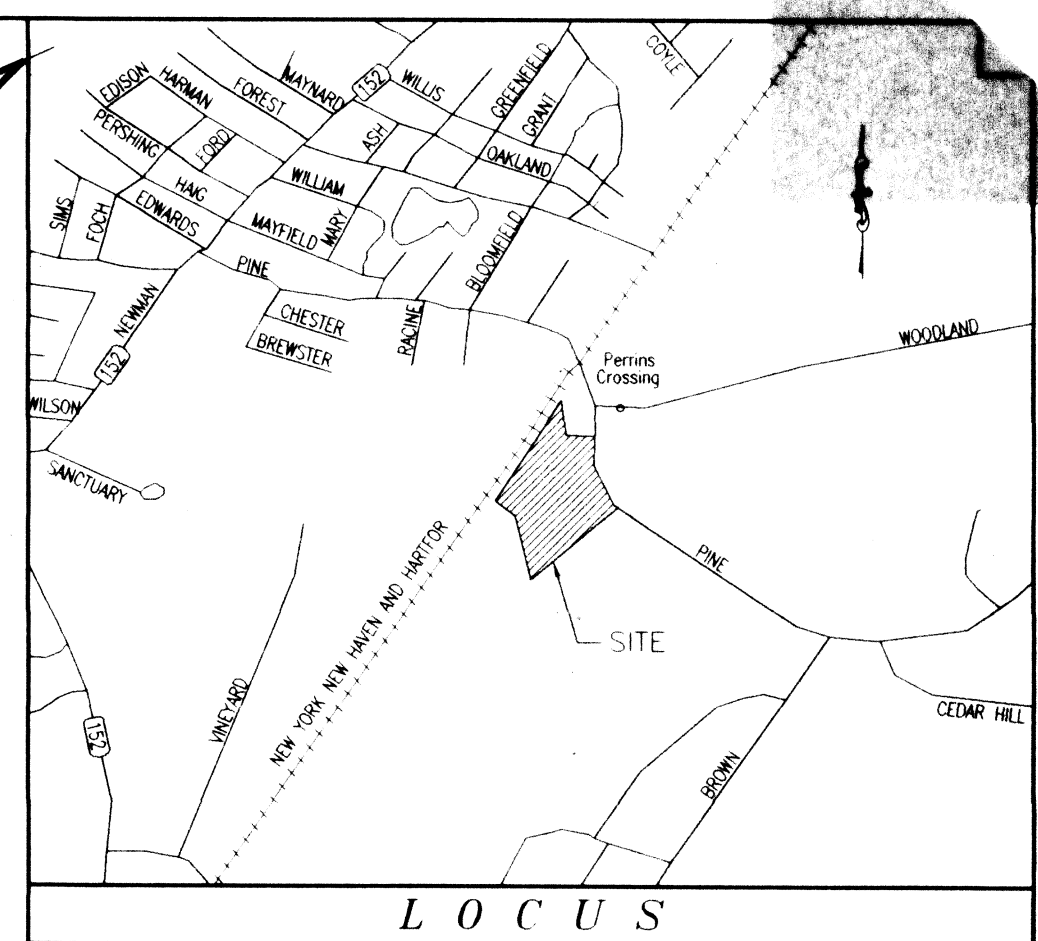


COPYRIGHT
 THESE DRAWINGS ARE THE PROPERTY OF THE ENGINEER/SURVEYOR AND HAVE BEEN PREPARED FOR THE OWNER, FOR THIS PROJECT AT THIS SITE AND ARE NOT TO BE USED FOR ANY OTHER PURPOSE, LOCATION OR OWNER WITHOUT WRITTEN CONSENT OF THIS OWNER OR ONE OF ITS DIRECTORS.
 WATERMAN ENGINEERING CO.
 CIVIL ENGINEERS & SURVEYORS
 400 NORTH BROWN
 EAST PROVIDENCE, RI 02914-2098

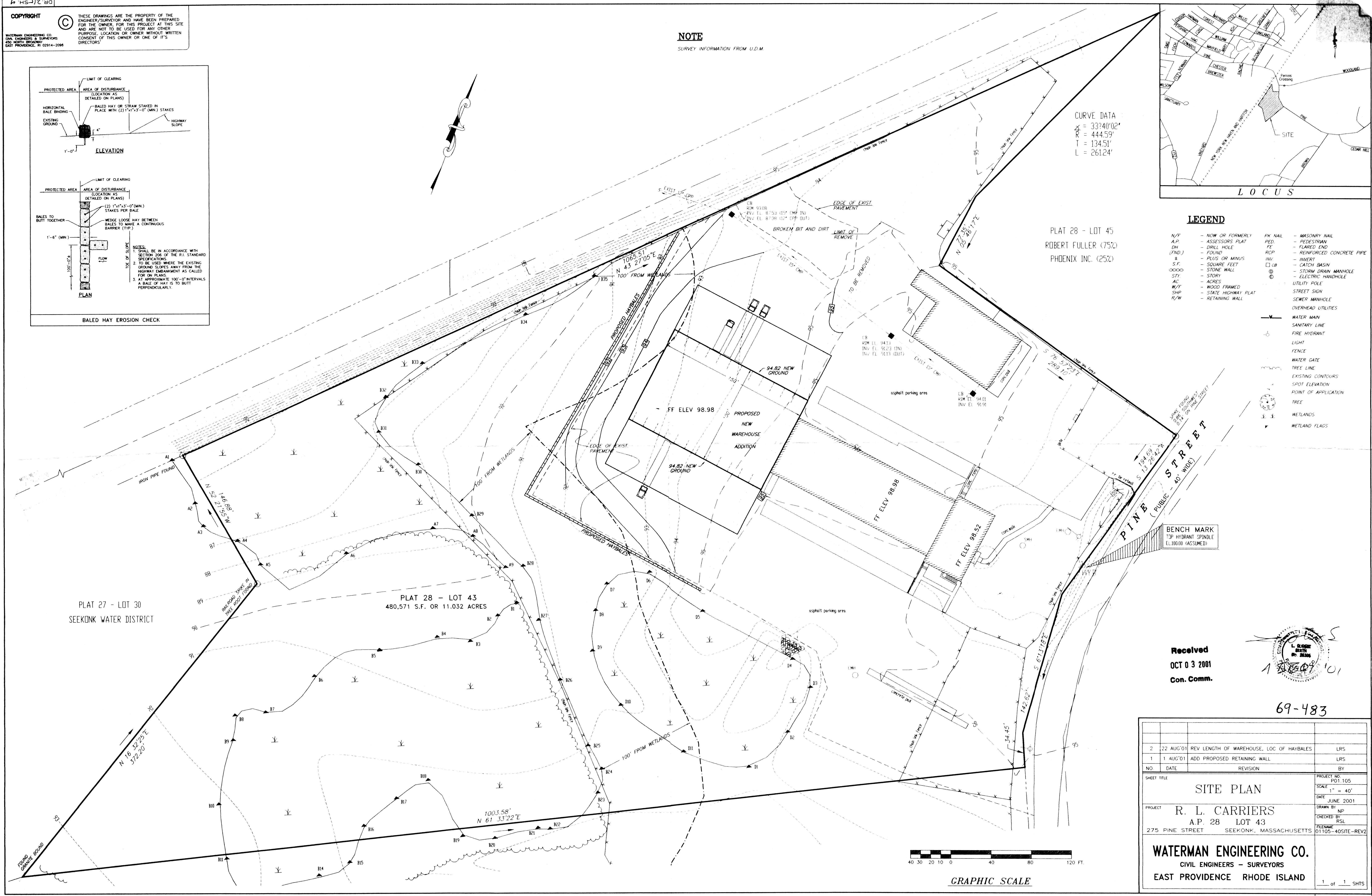
NOTE
 SURVEY INFORMATION FROM U.D.M.



CURVE DATA
 $\Delta = 33^\circ 40' 02''$
 $R = 444.59'$
 $T = 134.51'$
 $L = 261.24'$

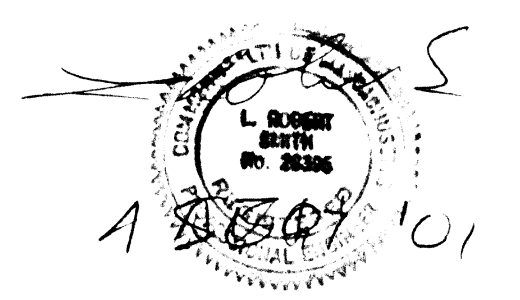
- LEGEND**
- N/F - NOW OR FORMERLY
 - A.P. - ASSESSORS PLAT
 - DH - DRILL HOLE
 - (FND) - FOUND
 - + - PLUS OR MINUS
 - S.F. - SQUARE FEET
 - STY - STORY
 - AC - ACRES
 - W/F - WOOD FRAMED
 - SHP - STATE HIGHWAY PLAT
 - R/W - RETAINING WALL
 - PK NAIL - MASONRY NAIL
 - PEE - PEDESTRIAN
 - FE - FLARED END
 - RCP - REINFORCED CONCRETE PIPE
 - INV - INVERT
 - CB - CATCH BASIN
 - SDM - STORM DRAIN MANHOLE
 - EH - ELECTRIC HANDHOLE
 - UP - UTILITY POLE
 - ST - STREET SIGN
 - SM - SEWER MANHOLE
 - OH - OVERHEAD UTILITIES
 - WM - WATER MAIN
 - SL - SANITARY LINE
 - FH - FIRE HYDRANT
 - L - LIGHT
 - F - FENCE
 - WG - WATER GATE
 - TL - TREE LINE
 - EC - EXISTING CONTOURS
 - SE - SPOT ELEVATION
 - PA - POINT OF APPLICATION
 - T - TREE
 - W - WETLANDS
 - WF - WETLAND FLAGS

PLAT 28 - LOT 45
 ROBERT FULLER (75%)
 PHOENIX INC. (25%)



BENCH MARK
 TOP HYDRANT SPINDLE
 EL. 100.00 (ASSUMED)

Received
 OCT 03 2001
 Con. Comm.



69-483

NO.	DATE	REVISION	BY
2	22 AUG '01	REV LENGTH OF WAREHOUSE, LOC OF HAYBALES	LRS
1	1 AUG '01	ADD PROPOSED RETAINING WALL	LRS

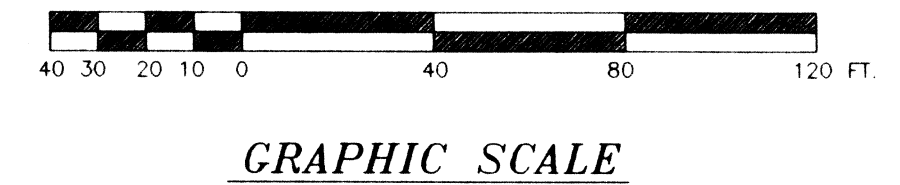
SHEET TITLE
 SITE PLAN

PROJECT
 R. L. CARRIERS
 A.P. 28 LOT 43
 275 PINE STREET SEEKONK, MASSACHUSETTS

PROJECT NO. PD1.105
SCALE 1" = 40'
DATE JUNE 2001
GRANN BY NP
CHECKED BY RSL
FILENAME 01105-40SITE-REV2

WATERMAN ENGINEERING CO.
 CIVIL ENGINEERS - SURVEYORS
 EAST PROVIDENCE RHODE ISLAND

1 of 1 SHTS



C:\PROJ2001\01105 CALDRE EXP\01105-40SITE-REV2.dwg Tue Sep 04 08:40:38 2001

DR 215 SH 4