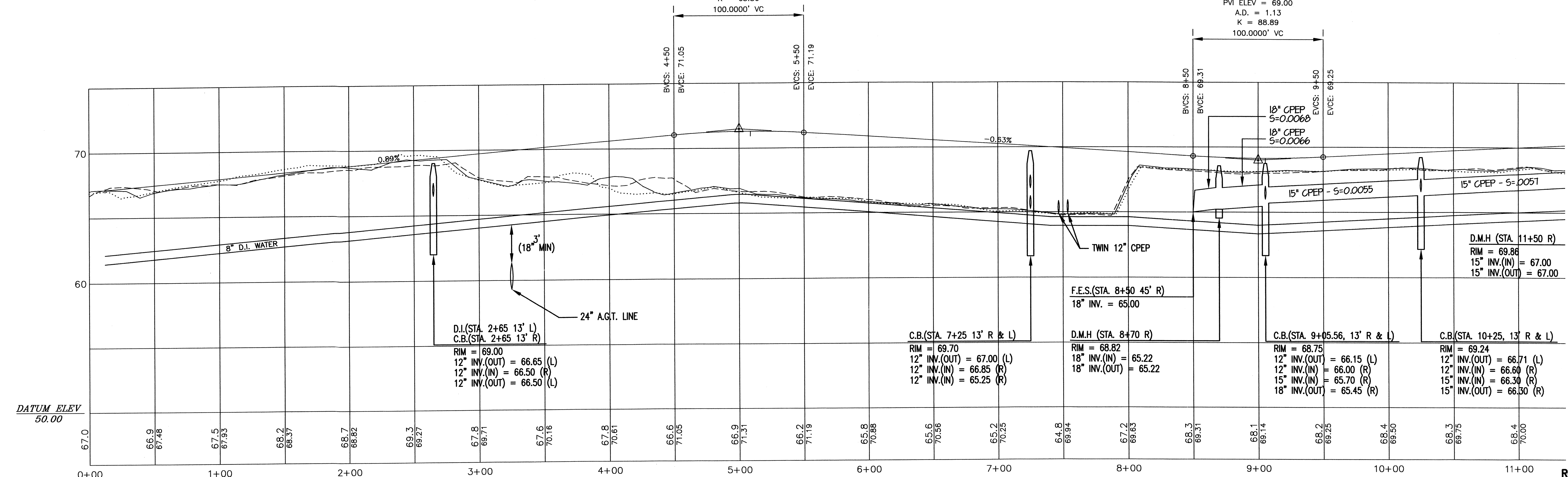


HIGH POINT ELEV = 71.32
 HIGH POINT STA = 5+08.84
 PVI STA = 5+00
 PVI ELEV = 71.50
 A.D. = -1.52
 K = 65.86
 100.0000' VC

LOW POINT ELEV = 69.14
 LOW POINT STA = 9+05.56
 PVI STA = 9+00
 PVI ELEV = 69.00
 A.D. = 1.13
 K = 88.89
 100.0000' VC



ROADWAY PLAN AND PROFILE NO. 1

DEFINITIVE SUBDIVISION
 GREENWOOD FARM
 PREPARED FOR
 DuSHAW DEVELOPMENT COMPANY
 GREENWOOD AVENUE
 SEEKONK, MASSACHUSETTS

CAPUTO AND WICK LTD. DATE: NOVEMBER 1, 2004

1150 PAWTUCKET AVE.
 RUMFORD, R.I. 02916 SHEET 8 OF 14

401-434-8880