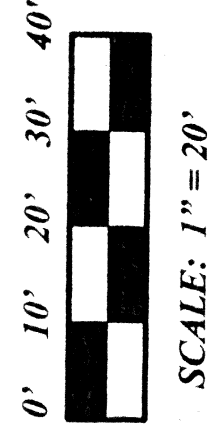
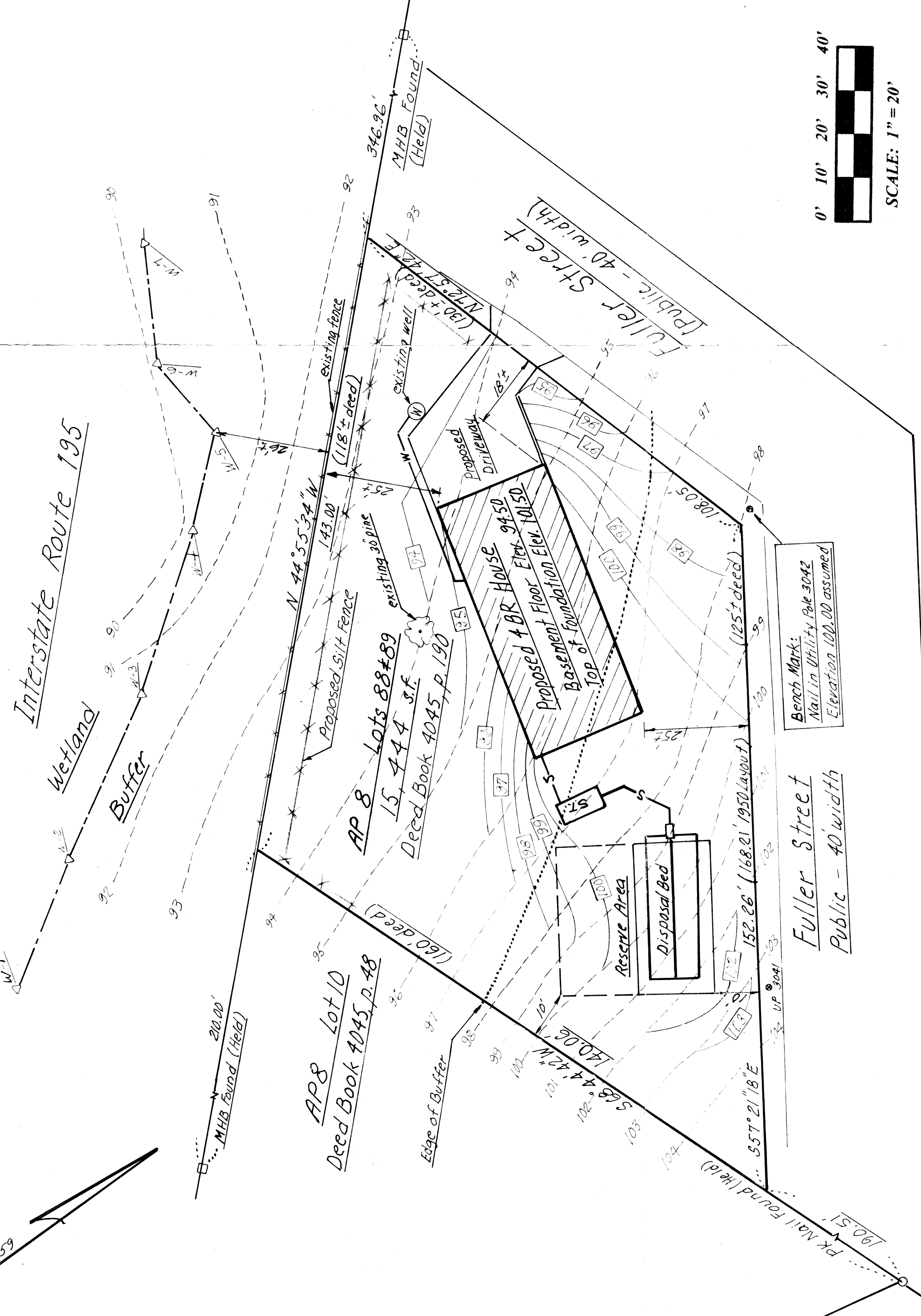


Pl. Bk. 401 p. 59



**NOTES**

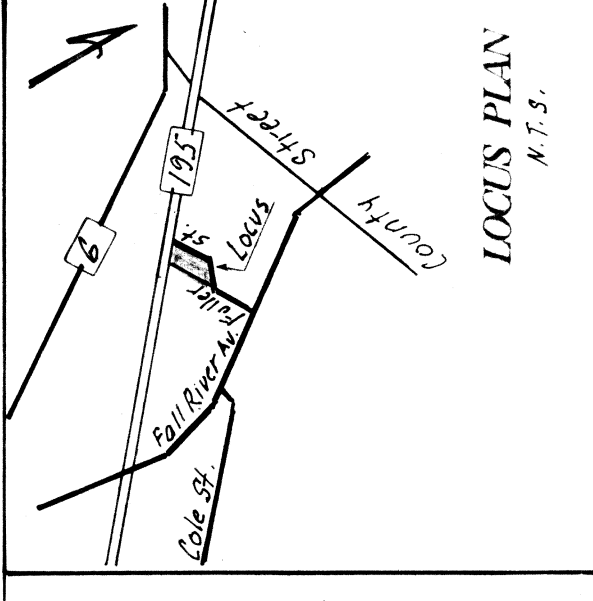
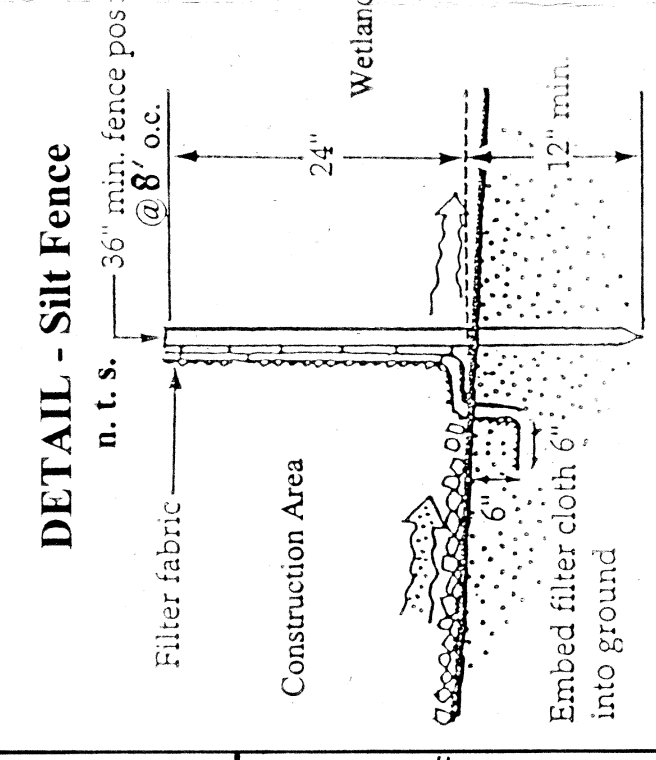
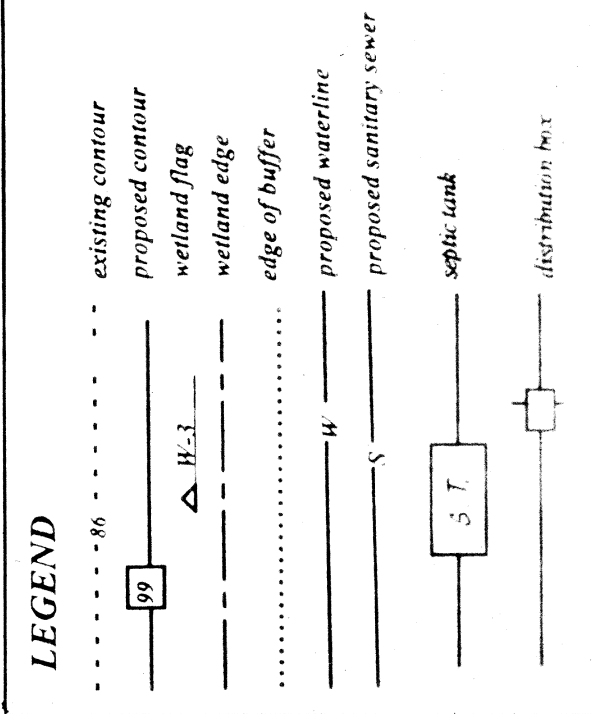
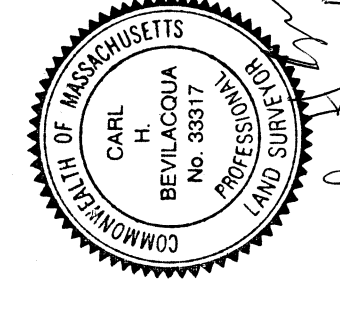
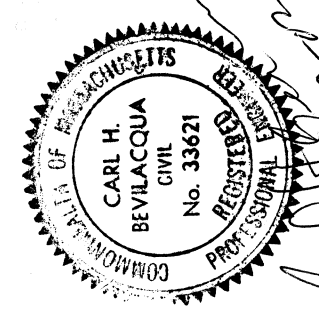
- 1 - The existing topography, the proposed work, and the septic design were taken from "Site Development Plan for Viasna Nath, Fuller Street, AP 8 Lots 88 and 89, September 2001, Revision 8-5-02, by R. H. Haasley Engineering Corp., 69 Stoney Hill Road, Saxonset, MA 02777, (508) 379-9873."
- 2 - The wetland edge was flagged by Wetlands Consulting Service, PO Box 1133, Lakeville, MA 02347.
- 3 - The property line survey, survey location of wetland flags, and topographic survey on Route 195 were performed by AVT Associates.
- 4 - The proposed silt fence is to be installed prior to construction, and maintained until grass is established.
- 5 - After grading is completed, place 4" depth of loam and seed all disturbed areas.
- 6 - Notify DIG SAFE at 1-888 DIG SAFE prior to commencing construction, the utility locations shown are approximate and incomplete.

Received  
 FEB 7 0 2003  
 Con. Comm.

69-517

**AVT ASSOCIATES**  
 Civil Engineers & Surveyors  
 P.O. Box 80151  
 S. Dartmouth, MA 02748-0151  
 508 992-0015

Site Plan - Proposed House  
 Fuller Street  
 AP 8 Lots 88 & 89  
 Seekonk, MA  
 Scale: 1" = 20'  
 Date: February 7, 2003  
 REVISIONS:



AP 8, Lots 88 & 89  
 Zoned R-1  
 Owned by:  
 Erik Erikson & Louise G. Erikson  
 as Trustees of Roswood Estates  
 Nominee Trust  
 Deed Reference:  
 Book 4405, Page 190