



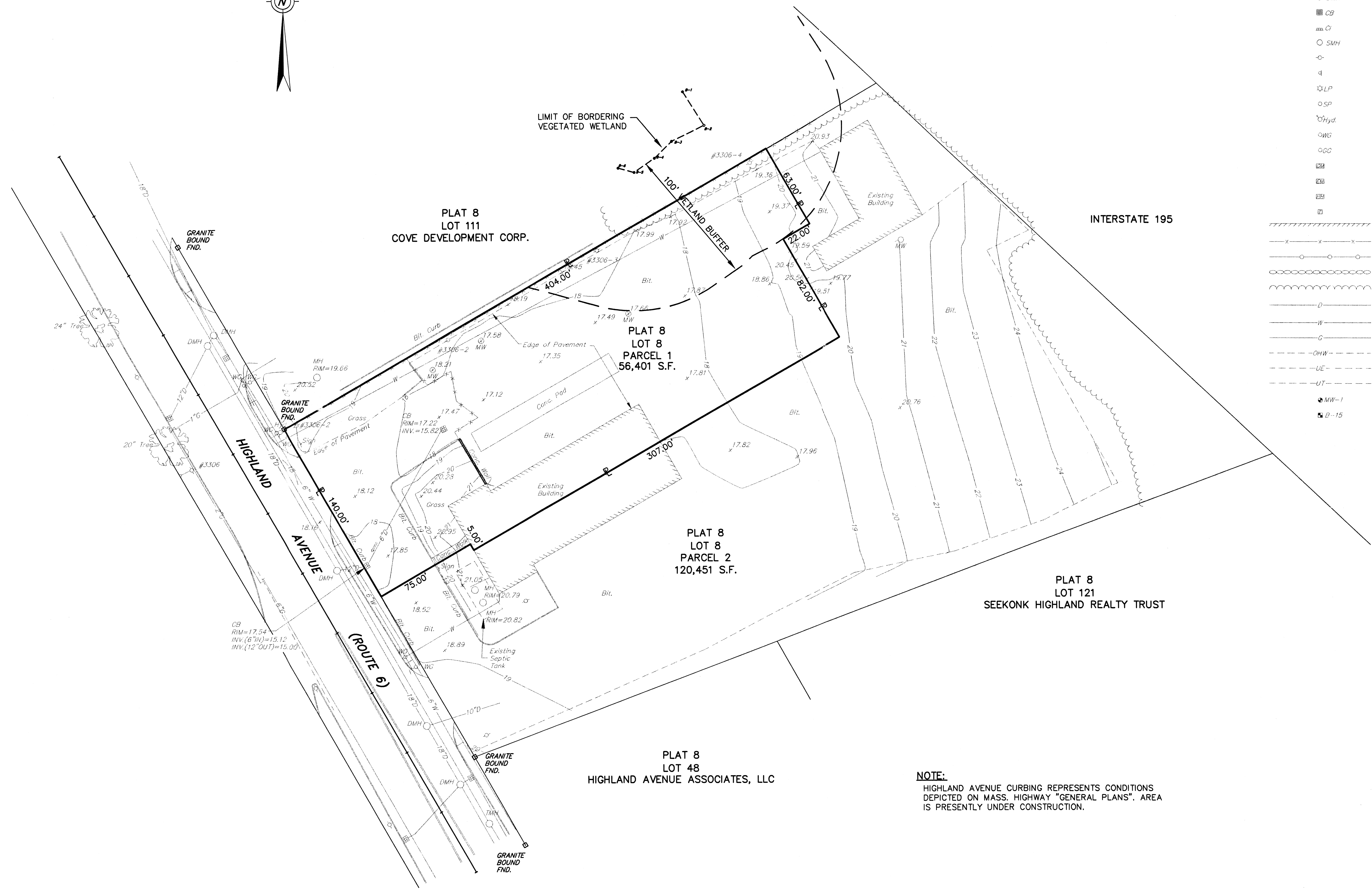
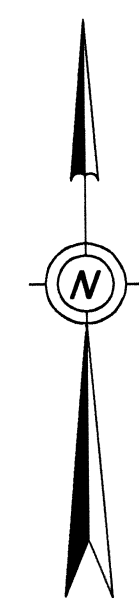
CROSSMAN ENGINEERING, INC.

151 Centerville Road
Warwick, Rhode Island 02886
Phone: (401) 738-5660 - Fax: (401) 738-8157
Email: ce@crossmaneng.com
Web Page: crossmaneng.com

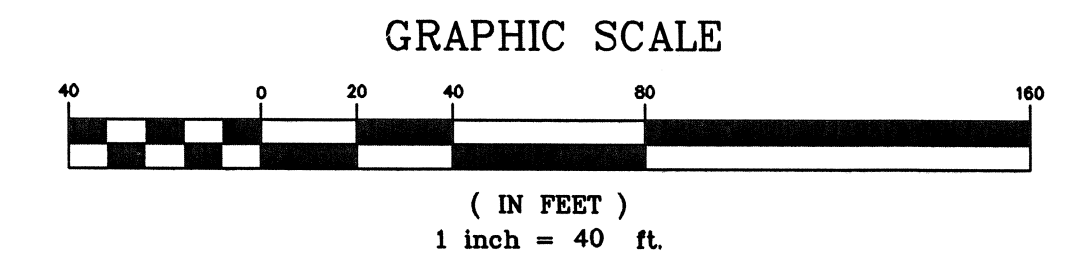
- Civil
- Transportation
- Environmental
- Site Planning
- Land Surveying

LEGEND

- PROPERTY LINE
- - - CONTOUR LINE
- XXX.XX SPOT GRADE
- DMH DRAINAGE MANHOLE
- CB CATCH BASIN
- CI CURB INLET
- SMH SEWER MANHOLE
- UTILITY POLE
- 4 SIGN
- LP LIGHT POLE
- SP SIGNAL POLE
- Hyd. FIRE HYDRANT
- WG WATER GATE
- GG GAS GATE
- GM GAS METER
- EM ELECTRIC METER
- EH ELECTRIC HANDHOLE
- TB TELEPHONE BOOTH
- ▭ BUILDING FACE
- x - x - CHAIN LINK FENCE
- o - o - STOCKADE FENCE
- - - - - STONE WALL
- - - - - TREE LINE
- D - DRAIN LINE
- W - WATER LINE
- G - GAS LINE
- OHW - OVERHEAD WIRE
- UE - UNDERGROUND ELECTRIC
- UT - UNDERGROUND TELEPHONE
- MW-1 MONITOR WELL
- B-15 BORING LOCATION



NOTE:
HIGHLAND AVENUE CURBING REPRESENTS CONDITIONS DEPICTED ON MASS. HIGHWAY "GENERAL PLANS". AREA IS PRESENTLY UNDER CONSTRUCTION.



PROJECT TITLE

PROPOSED



CARPET OUTLET
A.P. 8 LOT 8
PARCEL 1
16 HIGHLAND AVENUE
SEEKONK, MA. 02771
ZONING DISTRICT:
HIGHWAY BUSINESS

PREPARED FOR

PLV CORP.
d/b/a GCO CARPET OUTLET
650 BRANCH AVENUE
PROVIDENCE, RI 02904

DRAWING TITLE

EXISTING CONDITIONS PLAN

DATE NOVEMBER, 2002 **SCALE** 1"=40'

DWG NAME 970-EXCN.dwg

NO.	DATE	REVISION
1	12/12/02	WETLAND FLAGS
2	12/24/02	CONSERVATION AGENT COMMENTS

DRAWING NUMBER

A1.2

SHEET: 3 OF 12

AGENCY REVIEW SUBMISSION