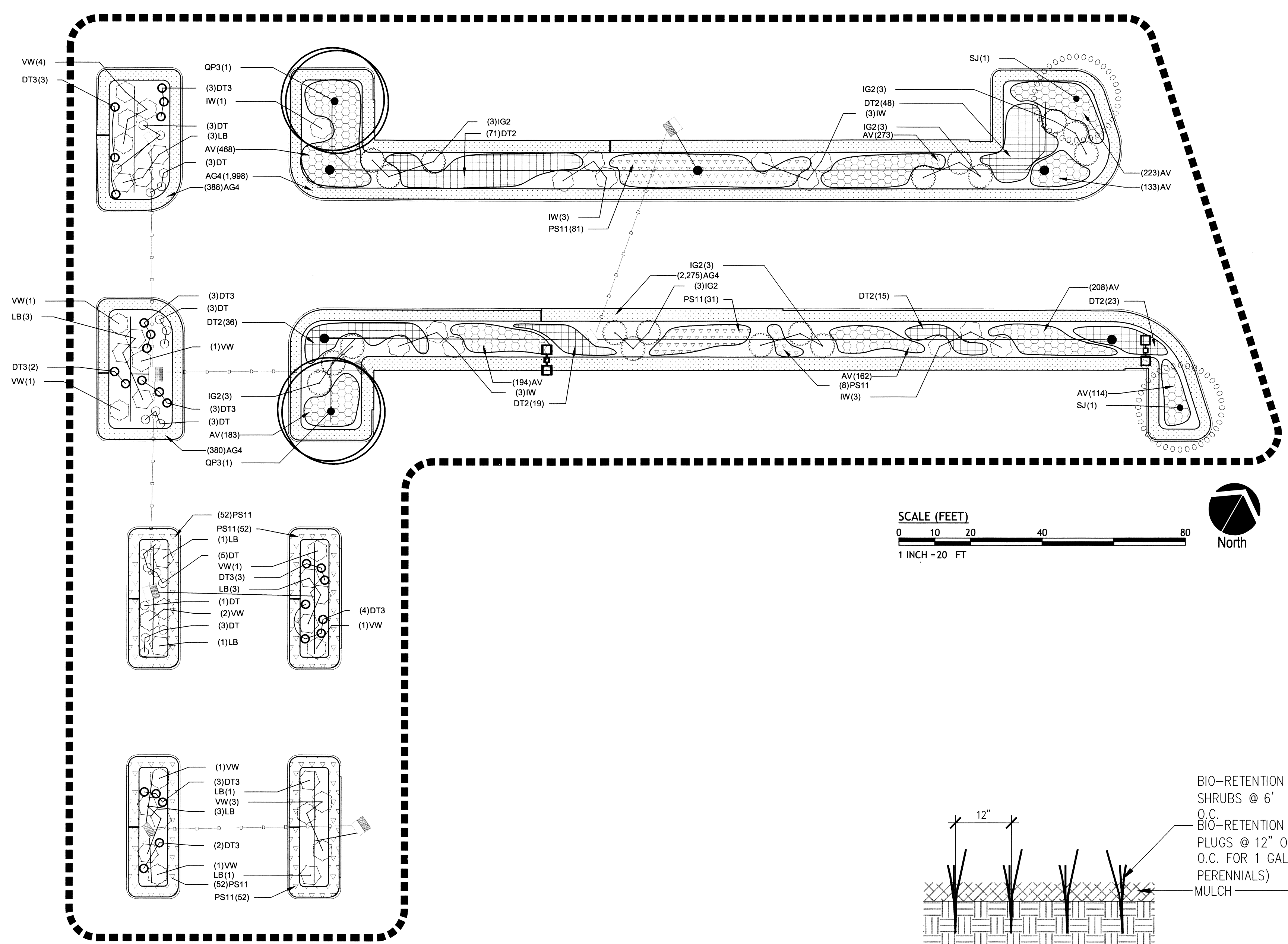


Q:\10-08_Crossings\10-08b_SeeKonk Crossings\SUBCONSULTANTS\diagram\4-11-11_Landscape Plan REV 04-11-11.dwg Apr. 11, 2011 1:46pm



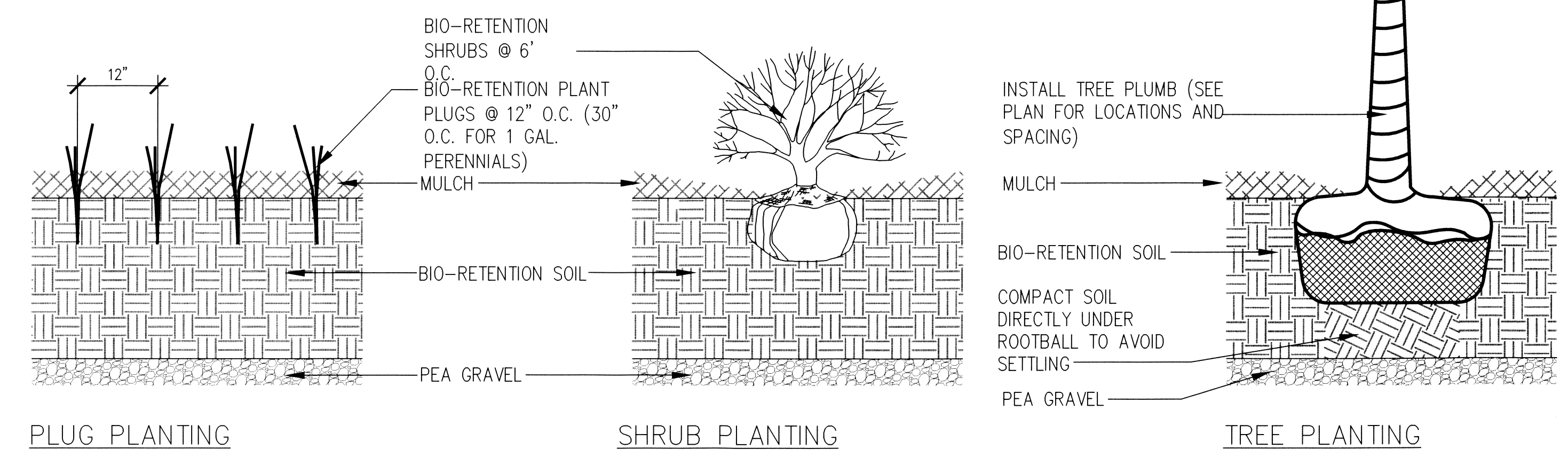
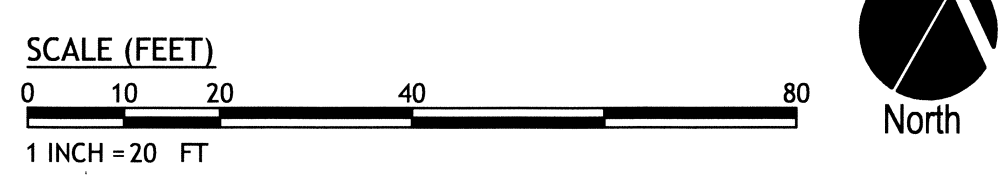
BIO-RETENTION LANDSCAPE PLAN

1" = 20'

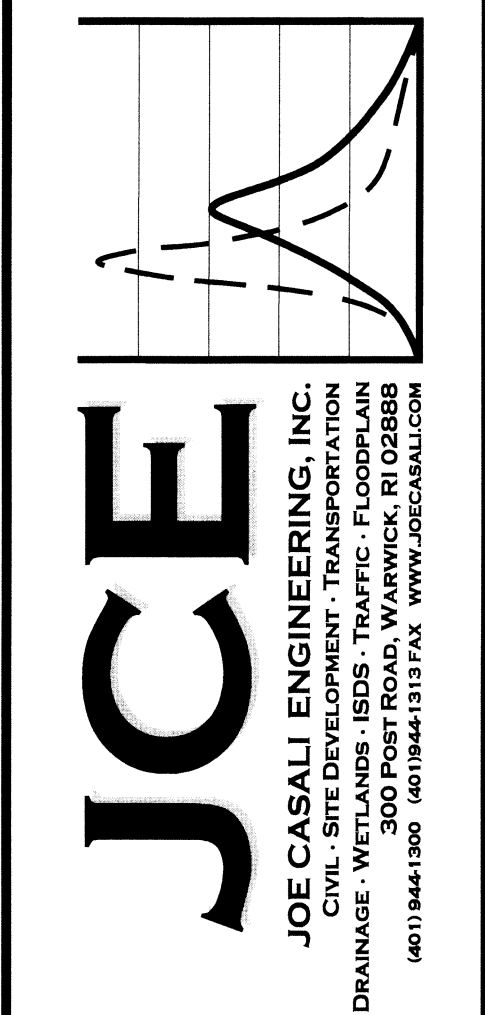
PLANT SCHEDULE BIO-RETENTION

BIO-RETENTION TREES	CODE	QTY	BOTANICAL NAME / COMMON NAME	CONT	CAL
	QP3	2	Quercus phellos / Willow Oak FACW	B & B	2.5"Cal
	SJ	2	Sophora japonica / Japanese Pagoda Tree FAC	B & B	2.5"Cal

BIO-RETENTION	CODE	QTY	BOTANICAL NAME / COMMON NAME	CONT
	DT3	26	Deschampsia cespitosa / Tufted Hair Grass FACW	1 gal
	DT	21	Deschampsia cespitosa / Tufted Hair Grass FACW	1 gal
	IG2	18	Ilex glabra / Inkberry Holly FACW	1 gal
	IW	13	Ilex verticillata / Winterberry FACW	1 gal
	LB	16	Lindera benzoin / Spicebush FACW	1 gal
	VW	16	Viburnum cassinoides / Northern Wild Raisin FACW	1 gal
	AG4	5,041	Andropogon gerardii / Big Blue Stem FAC	plug @ 12" oc
	AV	1,958	Andropogon virginicus / Broomsedge Bluestem FACU	plug @ 12" oc
	DT2	212	Deschampsia cespitosa / Tufted Hair Grass FACW	1 gal @ 30" oc
	PS11	328	Panicum virgatum / Switch Grass FAC to FACU	1 gal @ 30" oc



BIO-RETENTION AREA PLANTING DETAILS
NO SCALE



SEEKONK CROSSINGS
145-201 HIGHLAND AVENUE
SEEKONK, MASSACHUSETTS
AP 265, LOT 8

NO.	DATE	DESCRIPTION
1	04-11	PLANTINGS IN ISLANDS

DESIGNED BY:	DCSA
DRAWN BY:	DCS
CHECKED BY:	DCSA
DATE:	SEPT 2010
PROJECT NO:	10-08b

PRELIMINARY, NOT FOR CONSTRUCTION

BIO-RETENTION LANDSCAPE PLAN

SHEET 11 OF 13

LANDSCAPE ARCHITECT:
DIANE C. SOULE & ASSOCIATES, ASLA
LANDSCAPE ARCHITECTURE • GRAPHICS • DESIGN
Smithfield, Rhode Island 401.231.0736 e-mail: diane@DCSA.ws
www.dianesouleandassociates.com