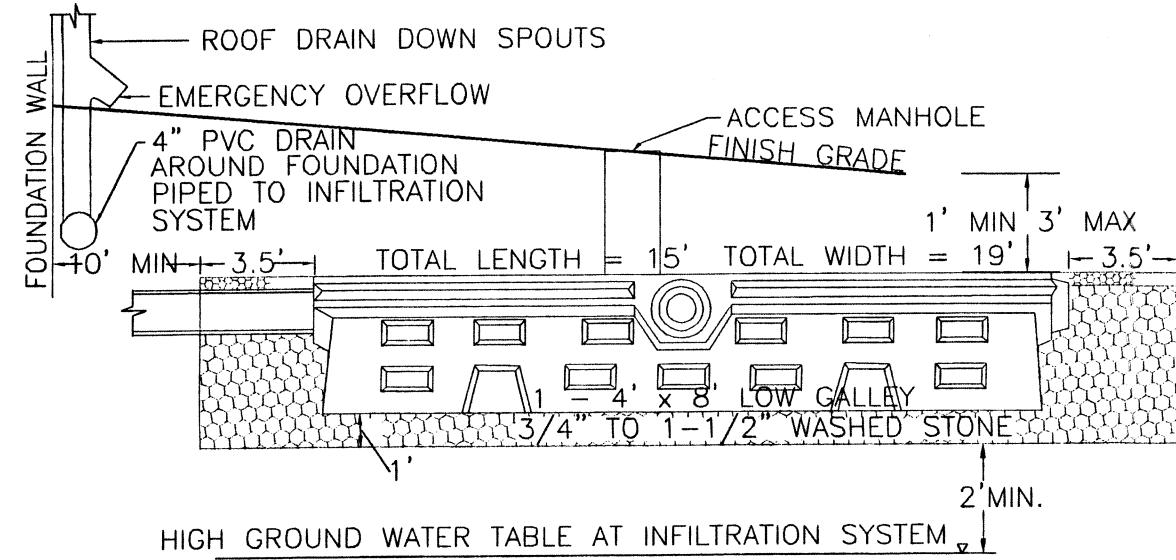


NOTES
 * ASPHALT TO BE CLASS 1, BITUMINOUS CONCRETE PAVEMENT, TYPE I-I

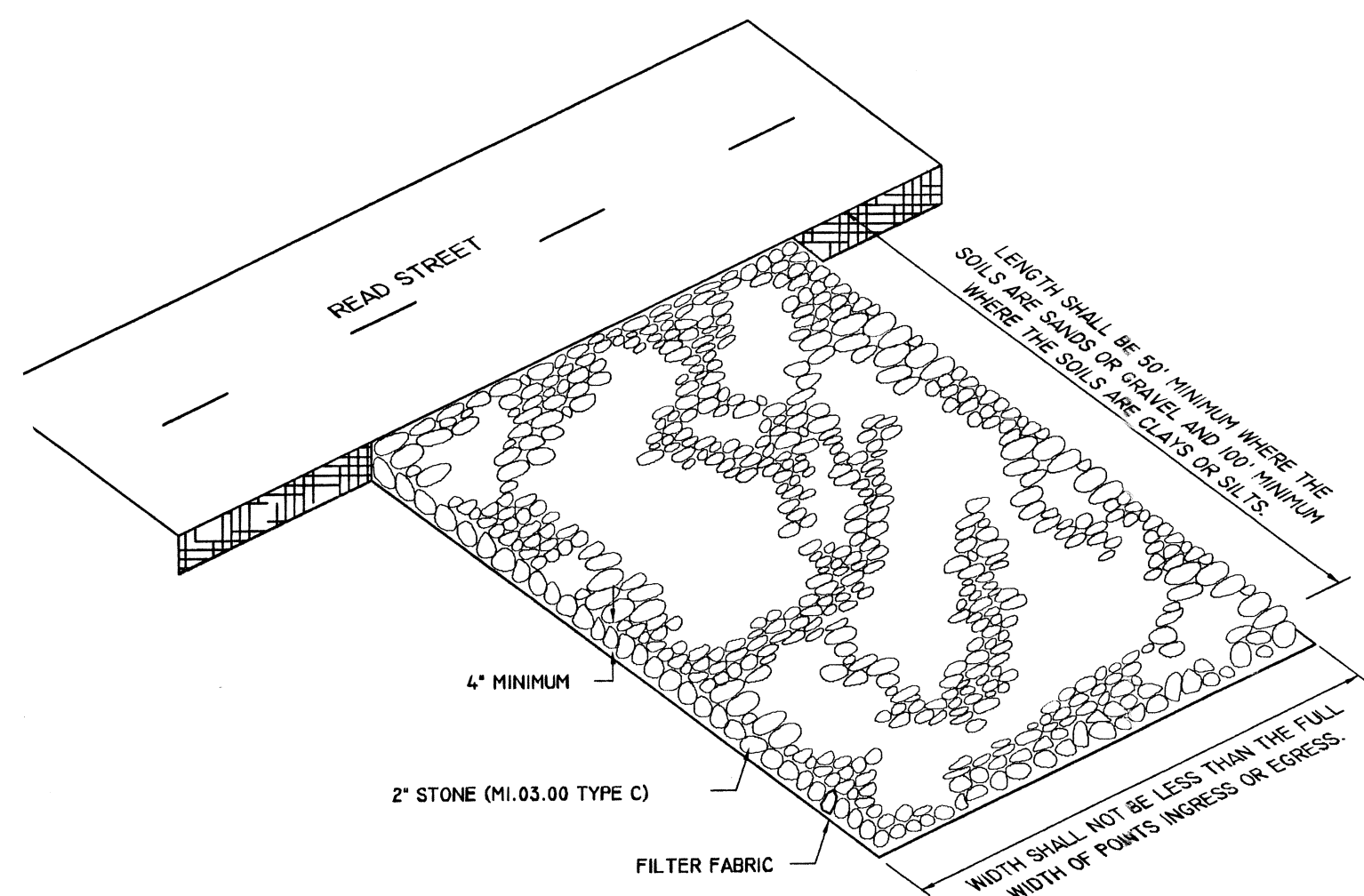
*NOTE: GRAVEL SUB-BASE CONFORMING TO MDPW SPECIFICATION M1.03.0 TYPE "B", MAXIMUM STONE SIZE 3". SHALL BE INSTALLED IN 4" MAXIMUM LIFTS, COMPACTED TO 95% MAX DRY DENSITY IN ACCORDANCE WITH AASHTO TEST DESIGNATION T99

TYPICAL ROADWAY CROSS-SECTION
 NOT TO SCALE



NOTE: EXCAVATE ALL TOP, SUB AND ANY OTHER SOILS ENCOUNTERED DOWN TO SUITABLE MATERIAL. BACKFILL WITH SELECT ON-SITE OR IMPORTED SOIL MATERIAL CONSISTING OF CLEAN GRANULAR SAND, FREE OF ORGANIC MATTER OR OTHER DELETERIOUS SUBSTANCES. CONTRACTOR SHALL CONTACT DESIGN ENGINEER TO INSPECT EXCAVATION BEFORE INSTALLATION OF THE GALLEY UNITS AND STONE.

ROOF INFILTRATION SYSTEM DETAIL
 NOT TO SCALE

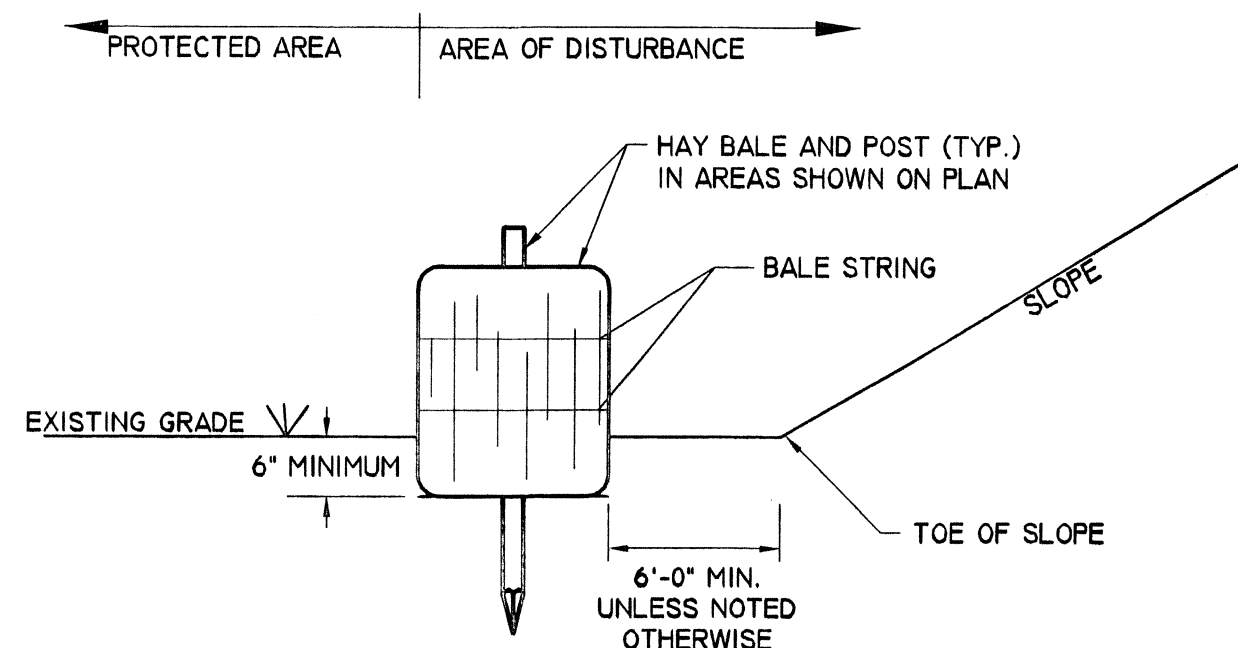


ENTRANCE SHOULD BE CLEARED OF ALL VEGETATION, OR OBJECTIONABLE MATERIAL. THE STONE SHALL BE SPECIFIED DIMENSIONS, AS NOTED ABOVE.

ALL BE MAINTAINED IN A CONDITION WHICH WILL OR FLOWING OF SEDIMENTS ONTO PUBLIC RIGHT-REQUIRE PERIODIC TOP DRESSING WITH ADDITIONAL 4\"/>

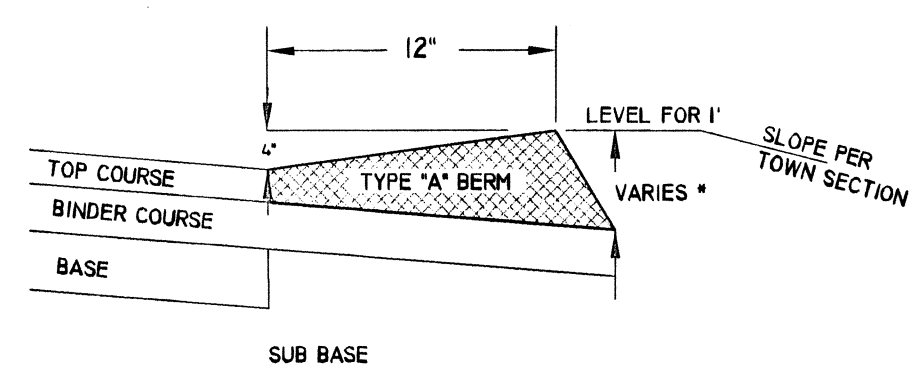
R LOCATION OF CONSTRUCTION ENTRANCE.

CONSTRUCTION ENTRANCE DETAIL
 NOT TO SCALE



- NOTES:
- HAY BALES ARE TO BE PLACED WITHIN A 6" MINIMUM TRENCH.
 - THOROUGHLY COMPACT EXCAVATED SOILS BACK INTO THE TRENCH AFTER INSTALLATION OF EROSION CONTROL DEVICES.
 - HAY BALES ARE TO BE TIGHTLY PLACED END TO END ALONG THE LIMITS OF PROTECTION AREA.
 - EACH BALE TO BE SECURELY STAKED INTO THE GROUND WITH (2) 1"x1"x3" OAK BEAN POLES.
 - BALE STRING SHALL BE LAID PARALLEL TO THE GROUND SURFACE.
 - CONTRACTOR IS RESPONSIBLE TO MAINTAIN INTEGRITY OF HAY BALE LINE FOR DURATION OF CONSTRUCTION.
 - EROSION CONTROLS TO REMAIN UNTIL SOIL CONDITIONS STABILIZE.
 - LOOSE HAY TO BE SPREAD ON AREAS OF EXPOSED LOAM & SEED UNTIL GERMINATION AND STABILIZATION OCCURS.

HAY BALE DETAIL
 NOT TO SCALE



* THIS DIMENSION VARIES WITH THE THICKNESS OF THE TOP COURSE AND SLOPE OF SHOULDER

BITUMINOUS CONCRETE BERM - TYPE "A"
 NOT TO SCALE

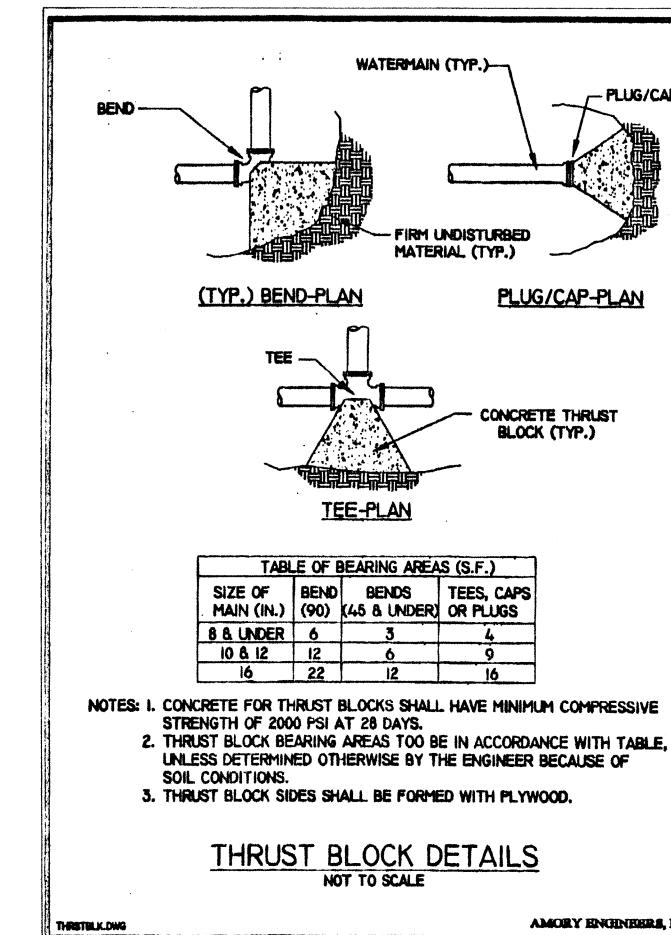
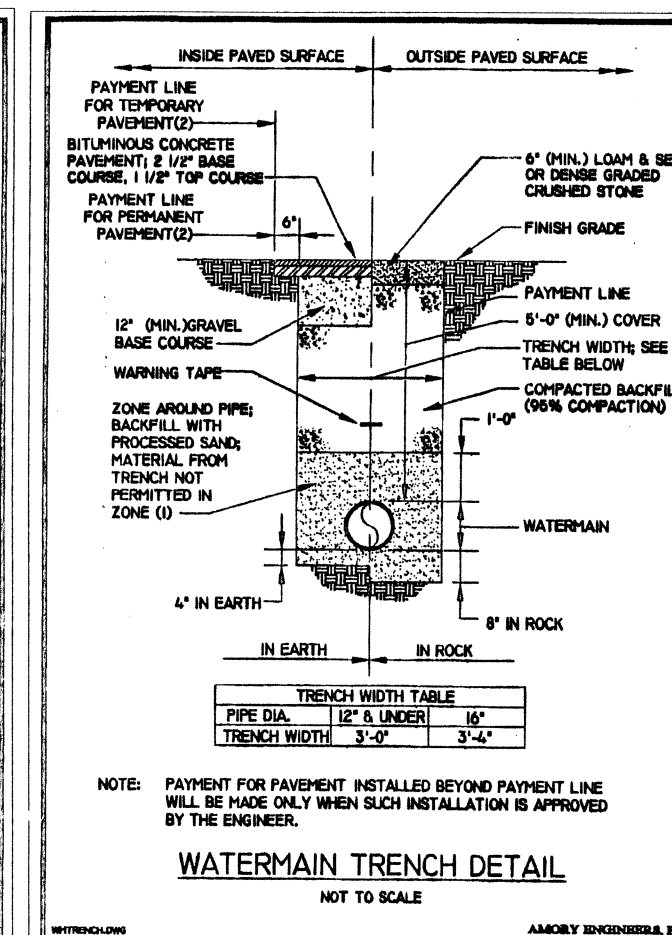


TABLE OF BEARING AREAS (S.F.)			
SIZE OF MAIN (IN)	BENDS	TEES	CAPS OR PLUGS
1.5 & 2.0	3	3	3
3.0	6	6	6
4.0	12	12	12
6.0	24	24	24

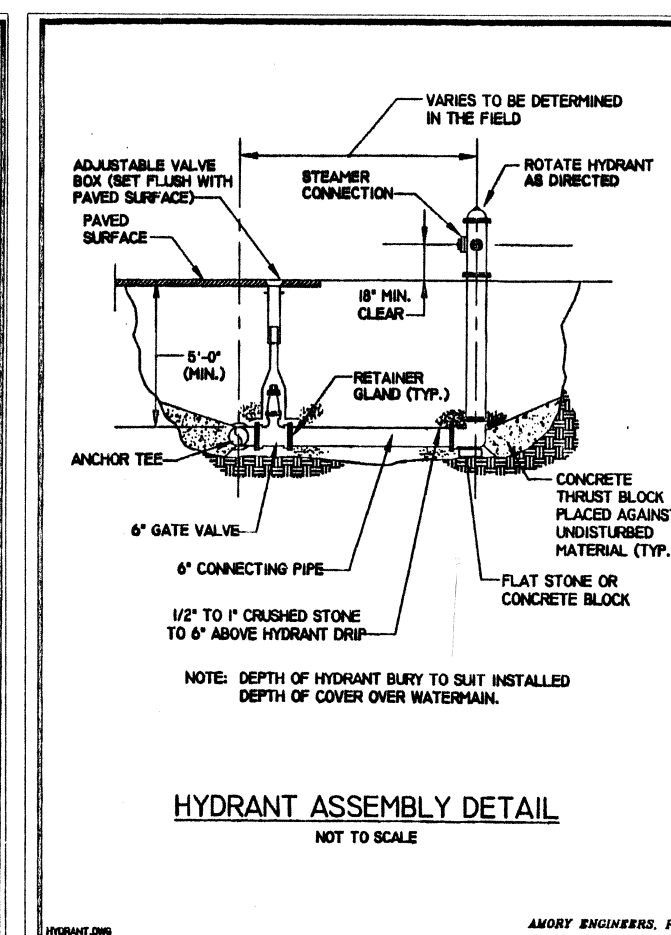
NOTES: 1. CONCRETE FOR THRUST BLOCKS SHALL HAVE MINIMUM COMPRESSIVE STRENGTH OF 3000 PSI AT 28 DAYS.
 2. THRUST BLOCK BEARING AREAS TOO BE IN ACCORDANCE WITH TABLE, UNLESS DETERMINED OTHERWISE BY THE ENGINEER BECAUSE OF SOIL CONDITIONS.
 3. THRUST BLOCK SIDES SHALL BE FORMED WITH PLYWOOD.

THRUST BLOCK DETAILS
 NOT TO SCALE

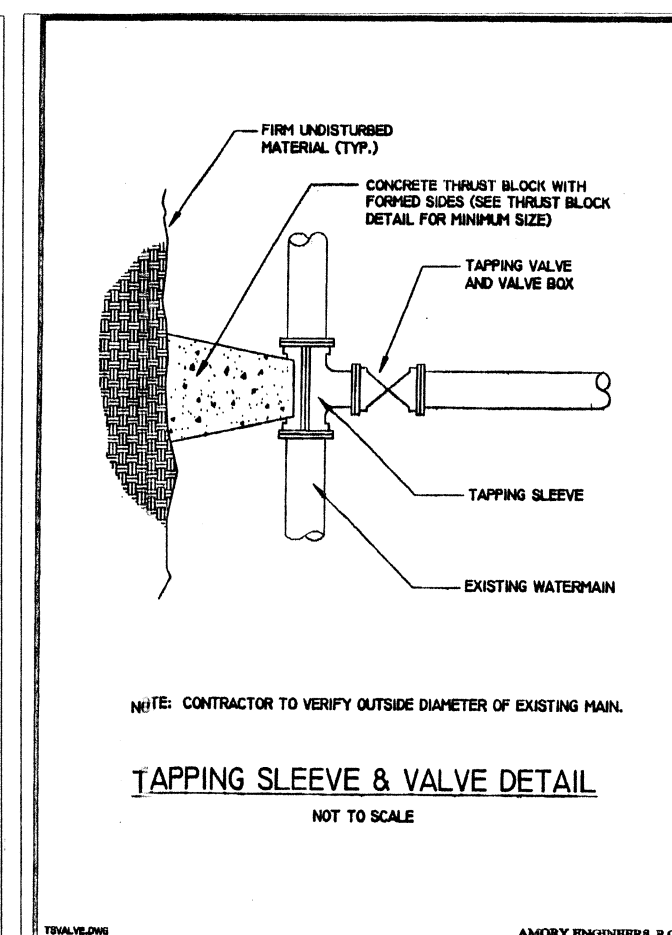


TRENCH WIDTH TABLE	
PIPE DIA.	MIN. TRENCH WIDTH
12"	3'-0"
18"	3'-6"
24"	4'-0"

WATERMAIN TRENCH DETAIL
 NOT TO SCALE

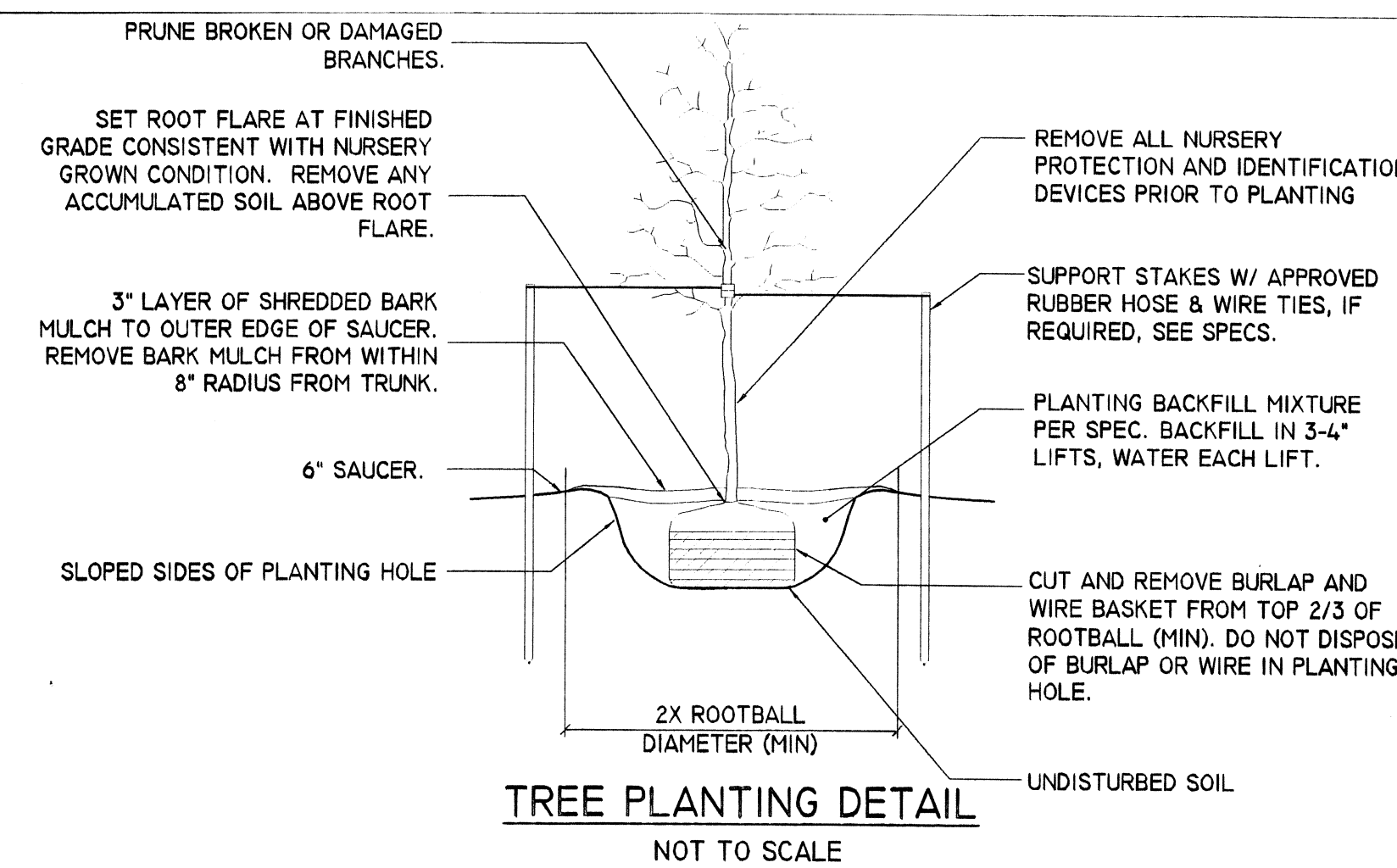


HYDRANT ASSEMBLY DETAIL
 NOT TO SCALE

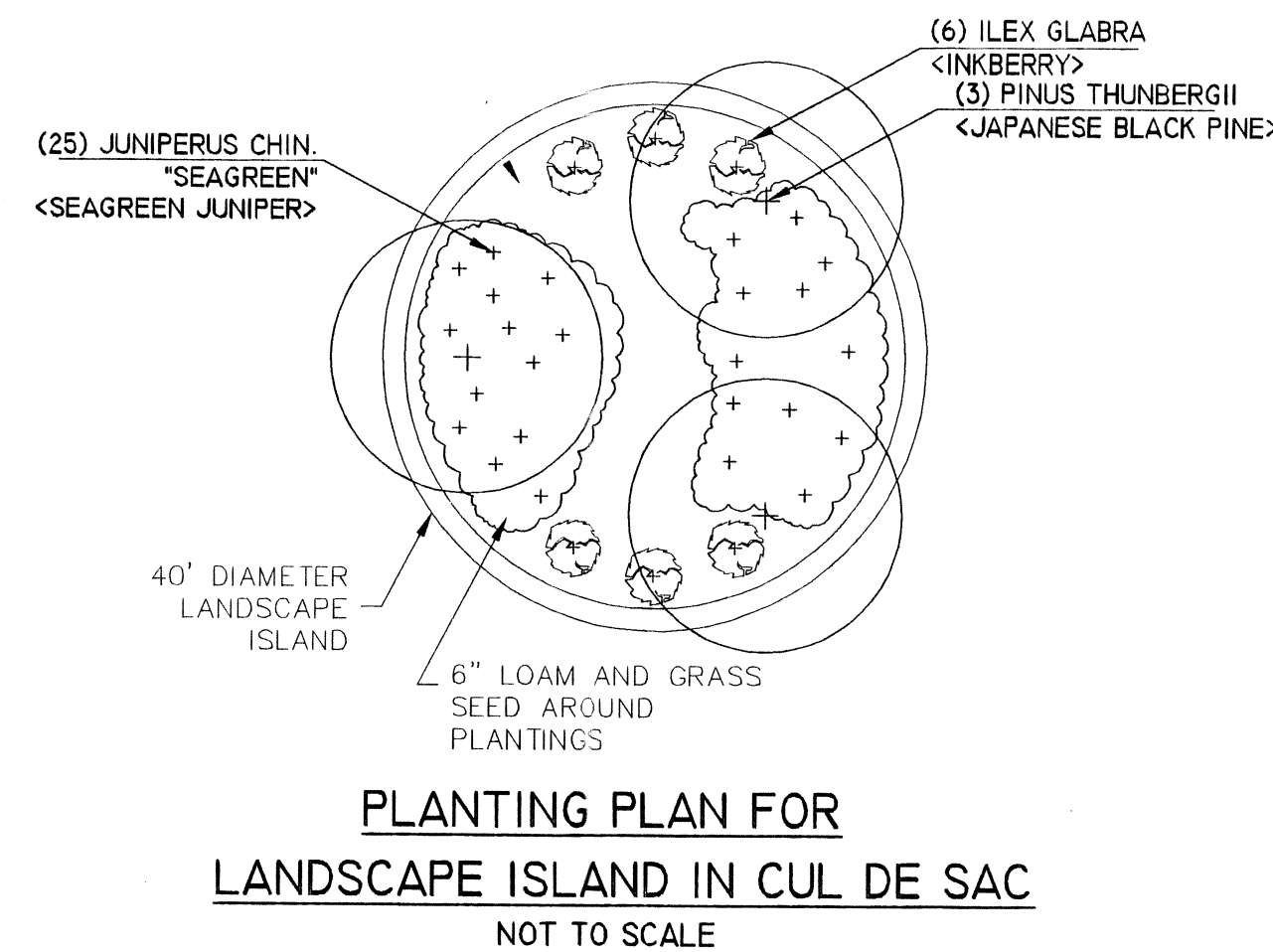


TAPPING SLEEVE & VALVE DETAIL
 NOT TO SCALE

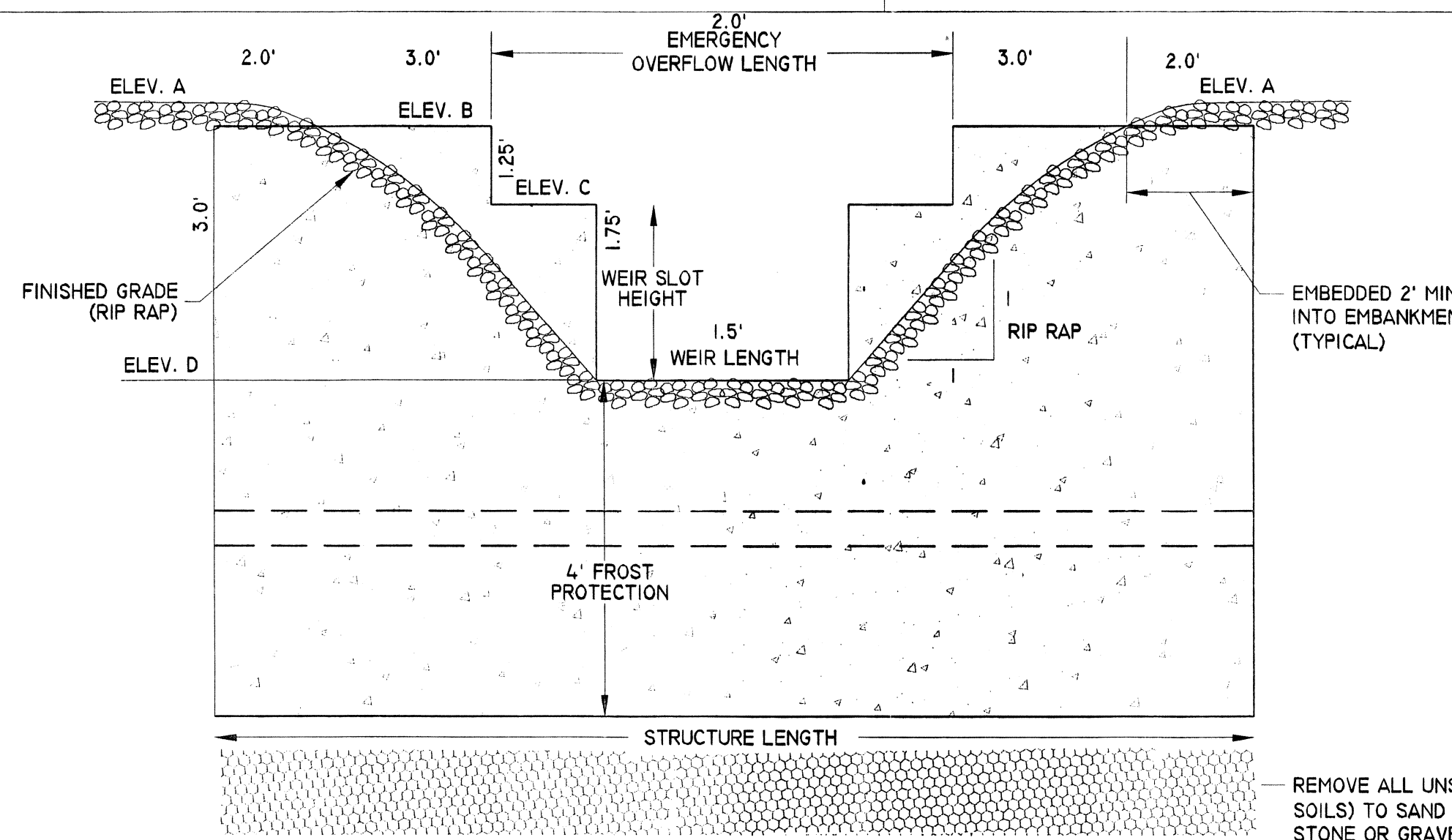
SEEKONK WATER DEPARTMENT DETAILS
 NOT TO SCALE



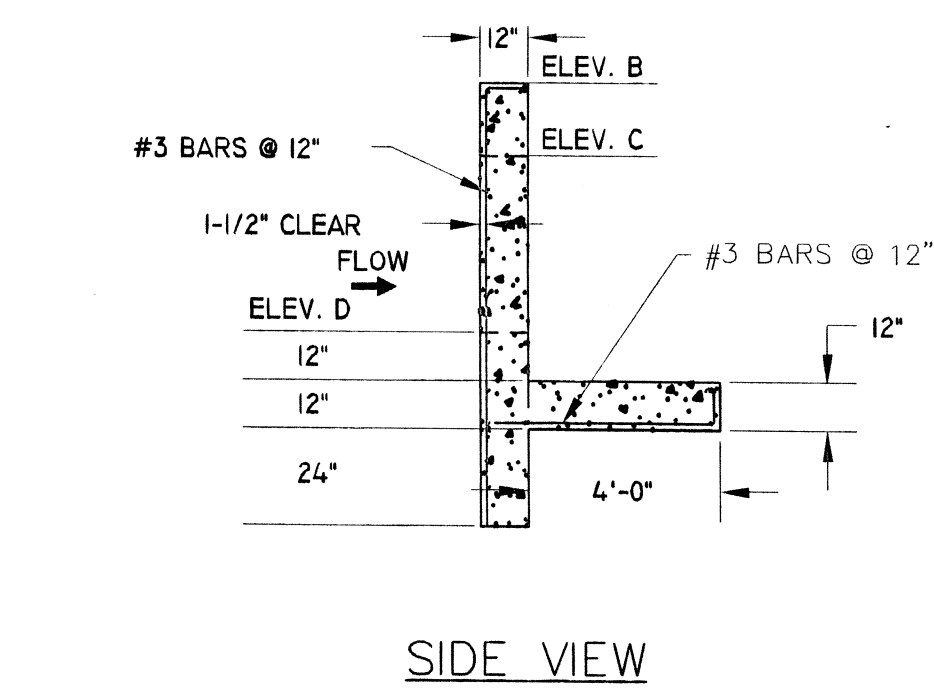
TREE PLANTING DETAIL
 NOT TO SCALE



PLANTING PLAN FOR LANDSCAPE ISLAND IN CUL DE SAC
 NOT TO SCALE

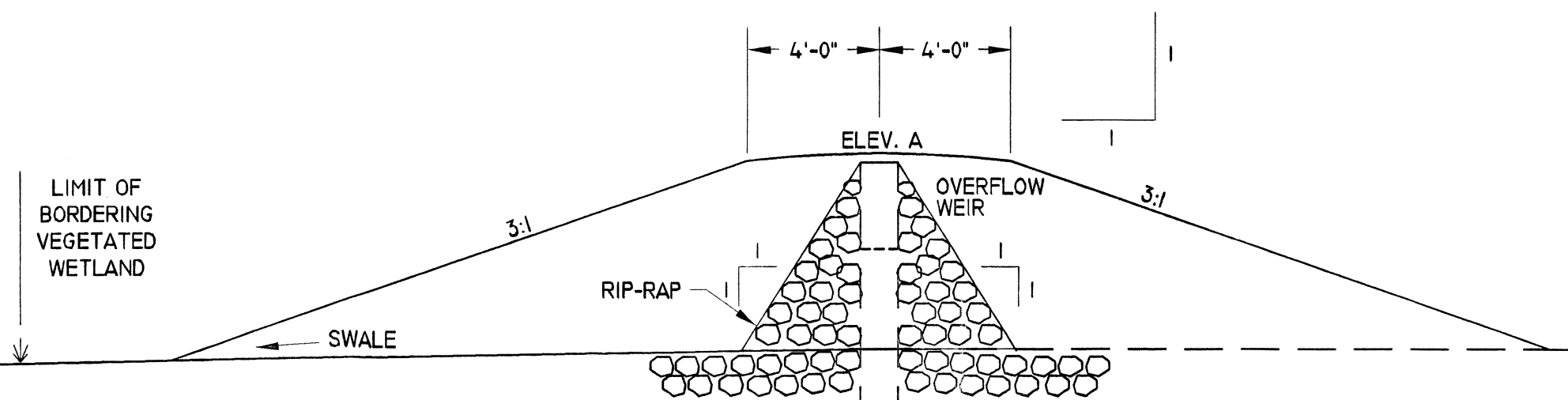


CONCRETE OUTLET CONTROL STRUCTURE DETAIL
 NOT TO SCALE



SIDE VIEW

REMOVE ALL UNSUITABLE MATERIAL ("A" AND "B" SOILS) TO SAND LAYER. BACKFILL WITH CRUSHED STONE OR GRAVEL BEDDING MATERIAL



BASIN #1	
ELEV. A	96.20
ELEV. B	96.00
ELEV. C	94.75
ELEV. D	93.00
WEIR SLOT HEIGHT	1.75
WEIR LENGTH	1.5'
EMERGENCY OVERFLOW LENGTH	2.0'
STRUCTURE LENGTH	12.0'

Seekonk Planning Board
 APPROVAL UNDER SUBDIVISION CONTROL LAW

 CLERK _____ DATE _____

DETAIL SHEET (1 OF 2)

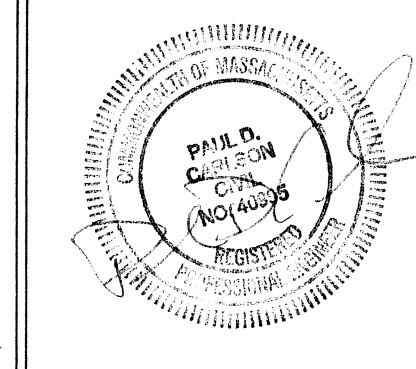
"MADISON ESTATES"

READ STREET SEEKONK, MASSACHUSETTS
 ASSESSORS MAP 24 LOT 668

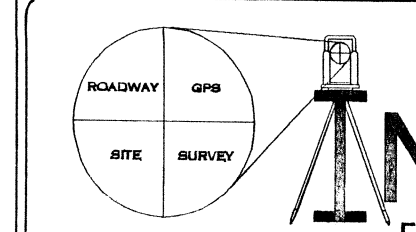
APPLICANT: COSTA DEVELOPMENT, LLC
 65 EMILY WAY, SEEKONK, MASSACHUSETTS 02771

JOB # 09-079 SCALE: AS-SHOWN DRAWN BY: CEA DATE: JUNE 21, 2010

REVISED: DECEMBER 1, 2010



PROFESSIONAL SEAL



PROFESSIONAL ENGINEERS AND LAND SURVEYORS
 INSITE PROFESSIONAL COMPLEX, SUITE 1
 1539 FALL RIVER AVENUE
 SEEKONK, MA 02771
 PHONE: (508) 336-4500
 FAX: (508) 336-4558

SHEET
7
 OF 9