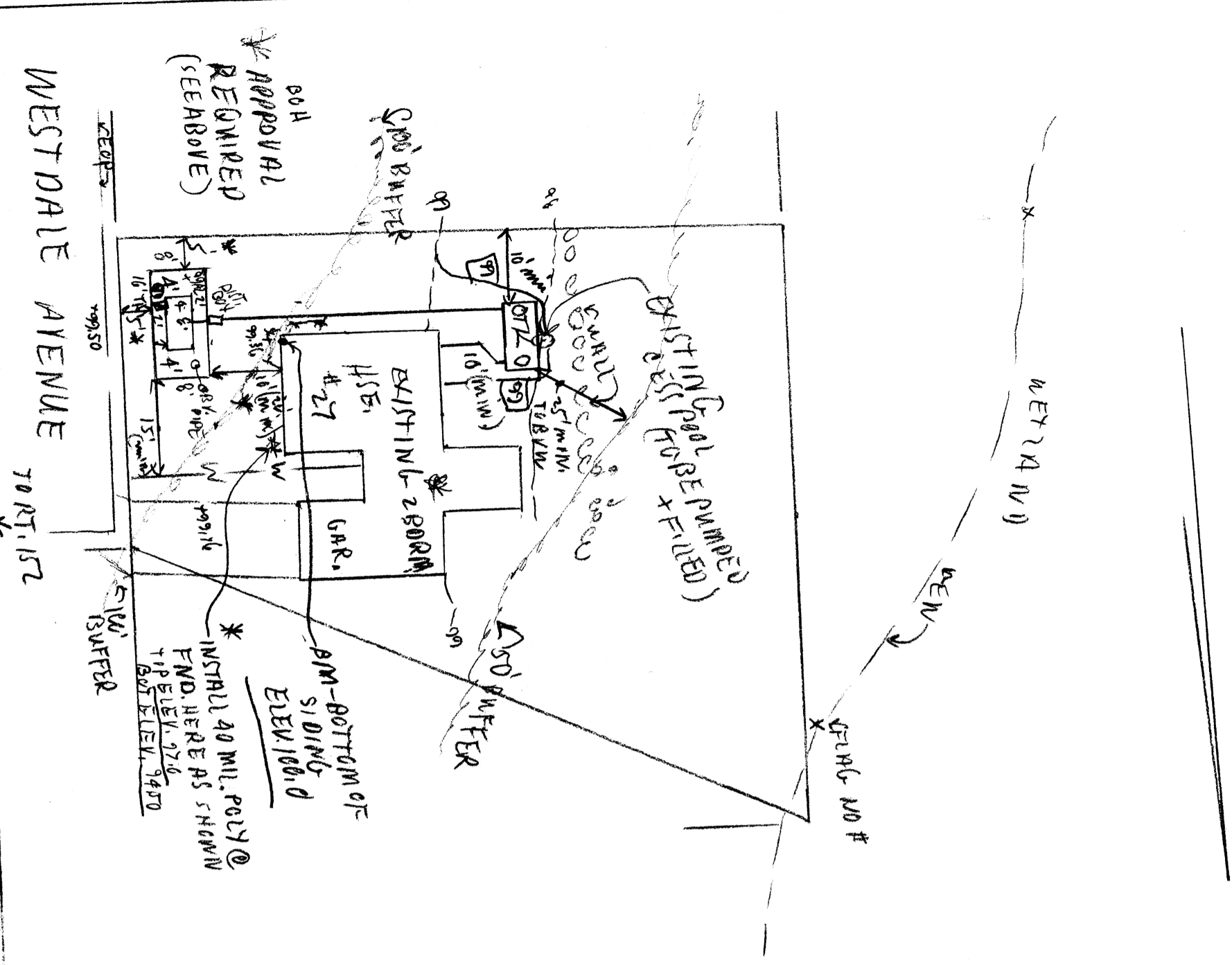


- REQUEST FOR LOCAL SYSTEM UPGRADES**
- 1) REQUEST TO REDUCE DISTANCE OF GAS TO LINES FROM 10' TO 5' PER SICMART 905111(C).
 - 2) REQUEST TO REDUCE DISTANCE OF GAS TO FOUNDATION FROM 26 TO 10' PER SICMART 905111(C).
 - 3) REQUEST TO REDUCE SIZE OF GAS BY 25% FROM 220 GPD TO 16576 GPD APPROX (10500 MM) PER SICMART 905111(C). (A DEED RESTRICTION IS REQUIRED)



ELEV. 'S 8 INV. 'S	PROPOSED AS-BUILT	TEST PIT NO. 1	TEST PIT NO. 2	TEST PIT NO. 3
TOP OF FOUNDATION	100.17			
FINISHED BASEMENT FLOOR				
INV. OF PIPE AT END	97.75			
INV. AT SEPTIC INLET	97.50			
INV. AT SEPTIC OUTLET	97.25			
INV. AT D. BOX INLET	96.75			
INV. AT D. BOX OUTLET	96.55			
INV. AT END OF PIPES	96.50			
ELEV. AT BOT. OF STONE	94.50			

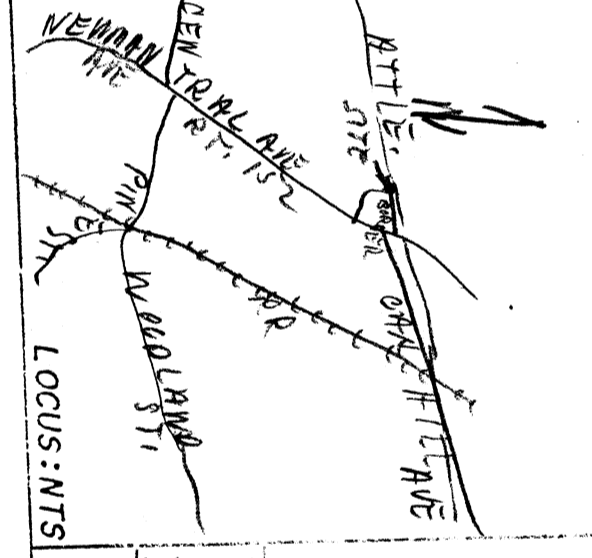
PERCOLATION TEST DATA

DATE OF TEST: 10/2/06

PERCOLATION CLASS: I

PERMEABILITY: 2 MIN/IN

DATE OF BOT. OF PERC. TEST HOLE: 9/22/06



ENVIRONMENTAL SERVICES

P.O. BOX 263
 HENNINGTON, MASSACHUSETTS 02769
 (508) 252-6274



- CONSTRUCTION NOTES:**
1. ALL WORK SHALL CONFORM TO 310 C.M.R. 15.00 STATE ENVIRONMENTAL CODE TITLE 5 RULES AND REGULATIONS ESTABLISHING MINIMUM STANDARDS RELATING TO LOCATION, DESIGN, CONSTRUCTION AND MAINTENANCE OF INDIVIDUAL SEWAGE DISPOSAL SYSTEMS AS OF THE LATEST AMENDMENT AND WITH THE REGULATIONS OF THE SEKONK BOARD OF HEALTH.
 2. THERE ARE NO KNOWN WELLS WITHIN 100' OF THE PROPOSED SEWAGE FIELD; THERE ARE NO KNOWN SINK FOUNDS WITHIN 100'.
 3. THE INSTALLER SHALL VERIFY ALL EXISTENCES AND DIMENSIONS PRIOR TO STARTING WORK; THE INSTALLER SHALL NOTIFY THE ENGINEER OF ANY DEVIATIONS FROM THE PLANS IN WRITING 10 DAYS BEFORE BEGINNING WORK.
 4. MINIMUM DISTANCE FROM EDGE OF SEWAGE FIELD TO PRESSURE WATER LINE - 10' AND 100' FROM A WELL.
 5. CARE SHALL BE TAKEN TO ASSURE THAT THE SOIL AT THE BOTTOM OF THE EXCAVATION IS NOT COMPACTED OR SHEARED.
 6. SUB-SURFACE DRAINING, FOUNDATION DRAINING AND STORM DRAINS SHALL BE 6" MINIMUM FROM THE SEWAGE TANK 10' FROM THE SEWAGE FIELD.
 7. IT IS THE RESPONSIBILITY OF THE INSTALLER TO CONTACT THE ENGINEER 24 HOURS PRIOR TO STARTING LINES FOR THE SEWAGE SYSTEM SO THAT AN AS-BUILT CAN BE OBTAINED FOR THE SOLE OF HEALTH.
 8. NO ENVIRONMENTAL SERVICES WILL NOT BE RESPONSIBLE FOR THE PERFORMANCE OF THE SEWAGE DISPOSAL SYSTEMS AS SHOWN, ANY ALTERATIONS MUST BE APPROVED IN WRITING BY DRAWN.
 9. DRAIN ENVIRONMENTAL SERVICES WILL NOT BE RESPONSIBLE FOR THE PERFORMANCE OF THE SEWAGE DISPOSAL SYSTEMS AS SHOWN, ANY ALTERATIONS MUST BE APPROVED IN WRITING BY DRAWN.
 10. LOT LINES SHALL BE VERIFIED BY A REGISTERED LAND SURVEYOR.
 11. TIGHT JOINTS SHALL BE USED TO PREVENT POLYMERIZATION OF THE SEWAGE.
 12. ALL PERMITS ARE THE RESPONSIBILITY OF THE APPLICANT.
 13. ALL COMMENTS OF GAS, TO BE MAINTAINED WITHIN THE PERMITS.
 14. LEACHING AREA SHALL HAVE ONE (1) VERTICAL PIPE OVERALL.
 15. WISE ENCAPSULATION TO NATURAL SOIL OR ROCK.

PROPOSED SEWAGE DISPOSAL SYSTEM

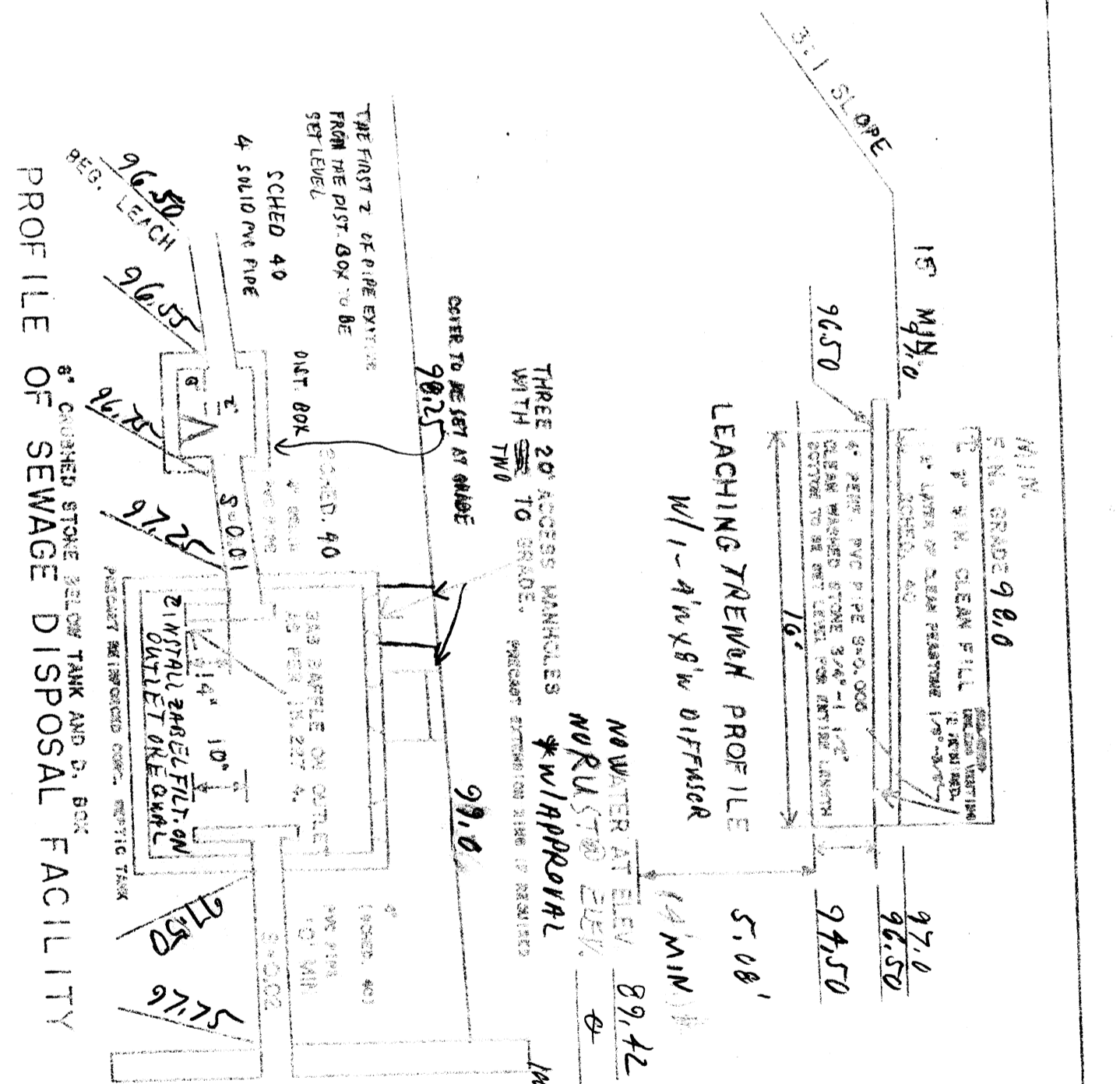
27 WESTDALE AVENUE
 WESTDALE, MA 02788

SCALE: 1" = 20'

DATE: 10/24/06

APPROVED BY: KSD

JOB NO: 043P



DESIGN CRITERIA: NO. GARB, DISPOSED WITHIN 10' OF THE SEWAGE FIELD.

1 - 10" X 8" X 2' 0" TRENCH WITH 10' DISTANCE

2 - BED X 10" GALV. BED - 220 GPD

3 - 12" X 12" X 10" TRENCH WITH 10' DISTANCE

4 - 12" X 12" X 10" TRENCH WITH 10' DISTANCE

5 - 12" X 12" X 10" TRENCH WITH 10' DISTANCE

6 - 12" X 12" X 10" TRENCH WITH 10' DISTANCE

7 - 12" X 12" X 10" TRENCH WITH 10' DISTANCE

8 - 12" X 12" X 10" TRENCH WITH 10' DISTANCE

9 - 12" X 12" X 10" TRENCH WITH 10' DISTANCE

10 - 12" X 12" X 10" TRENCH WITH 10' DISTANCE

11 - 12" X 12" X 10" TRENCH WITH 10' DISTANCE

12 - 12" X 12" X 10" TRENCH WITH 10' DISTANCE

13 - 12" X 12" X 10" TRENCH WITH 10' DISTANCE

14 - 12" X 12" X 10" TRENCH WITH 10' DISTANCE

15 - 12" X 12" X 10" TRENCH WITH 10' DISTANCE

16 - 12" X 12" X 10" TRENCH WITH 10' DISTANCE

17 - 12" X 12" X 10" TRENCH WITH 10' DISTANCE

18 - 12" X 12" X 10" TRENCH WITH 10' DISTANCE

19 - 12" X 12" X 10" TRENCH WITH 10' DISTANCE

20 - 12" X 12" X 10" TRENCH WITH 10' DISTANCE

21 - 12" X 12" X 10" TRENCH WITH 10' DISTANCE

22 - 12" X 12" X 10" TRENCH WITH 10' DISTANCE

23 - 12" X 12" X 10" TRENCH WITH 10' DISTANCE

24 - 12" X 12" X 10" TRENCH WITH 10' DISTANCE

25 - 12" X 12" X 10" TRENCH WITH 10' DISTANCE

26 - 12" X 12" X 10" TRENCH WITH 10' DISTANCE

27 - 12" X 12" X 10" TRENCH WITH 10' DISTANCE

28 - 12" X 12" X 10" TRENCH WITH 10' DISTANCE

29 - 12" X 12" X 10" TRENCH WITH 10' DISTANCE

30 - 12" X 12" X 10" TRENCH WITH 10' DISTANCE

31 - 12" X 12" X 10" TRENCH WITH 10' DISTANCE

32 - 12" X 12" X 10" TRENCH WITH 10' DISTANCE

33 - 12" X 12" X 10" TRENCH WITH 10' DISTANCE

34 - 12" X 12" X 10" TRENCH WITH 10' DISTANCE

35 - 12" X 12" X 10" TRENCH WITH 10' DISTANCE

36 - 12" X 12" X 10" TRENCH WITH 10' DISTANCE

37 - 12" X 12" X 10" TRENCH WITH 10' DISTANCE

38 - 12" X 12" X 10" TRENCH WITH 10' DISTANCE

39 - 12" X 12" X 10" TRENCH WITH 10' DISTANCE

40 - 12" X 12" X 10" TRENCH WITH 10' DISTANCE

41 - 12" X 12" X 10" TRENCH WITH 10' DISTANCE

42 - 12" X 12" X 10" TRENCH WITH 10' DISTANCE

43 - 12" X 12" X 10" TRENCH WITH 10' DISTANCE

44 - 12" X 12" X 10" TRENCH WITH 10' DISTANCE

45 - 12" X 12" X 10" TRENCH WITH 10' DISTANCE

46 - 12" X 12" X 10" TRENCH WITH 10' DISTANCE

47 - 12" X 12" X 10" TRENCH WITH 10' DISTANCE

48 - 12" X 12" X 10" TRENCH WITH 10' DISTANCE

49 - 12" X 12" X 10" TRENCH WITH 10' DISTANCE

50 - 12" X 12" X 10" TRENCH WITH 10' DISTANCE

51 - 12" X 12" X 10" TRENCH WITH 10' DISTANCE

52 - 12" X 12" X 10" TRENCH WITH 10' DISTANCE

53 - 12" X 12" X 10" TRENCH WITH 10' DISTANCE

54 - 12" X 12" X 10" TRENCH WITH 10' DISTANCE

55 - 12" X 12" X 10" TRENCH WITH 10' DISTANCE

56 - 12" X 12" X 10" TRENCH WITH 10' DISTANCE

57 - 12" X 12" X 10" TRENCH WITH 10' DISTANCE

58 - 12" X 12" X 10" TRENCH WITH 10' DISTANCE

59 - 12" X 12" X 10" TRENCH WITH 10' DISTANCE

60 - 12" X 12" X 10" TRENCH WITH 10' DISTANCE

61 - 12" X 12" X 10" TRENCH WITH 10' DISTANCE

62 - 12" X 12" X 10" TRENCH WITH 10' DISTANCE

63 - 12" X 12" X 10" TRENCH WITH 10' DISTANCE

64 - 12" X 12" X 10" TRENCH WITH 10' DISTANCE

65 - 12" X 12" X 10" TRENCH WITH 10' DISTANCE

66 - 12" X 12" X 10" TRENCH WITH 10' DISTANCE

67 - 12" X 12" X 10" TRENCH WITH 10' DISTANCE

68 - 12" X 12" X 10" TRENCH WITH 10' DISTANCE

69 - 12" X 12" X 10" TRENCH WITH 10' DISTANCE

70 - 12" X 12" X 10" TRENCH WITH 10' DISTANCE

71 - 12" X 12" X 10" TRENCH WITH 10' DISTANCE

72 - 12" X 12" X 10" TRENCH WITH 10' DISTANCE

73 - 12" X 12" X 10" TRENCH WITH 10' DISTANCE

74 - 12" X 12" X 10" TRENCH WITH 10' DISTANCE

75 - 12" X 12" X 10" TRENCH WITH 10' DISTANCE

76 - 12" X 12" X 10" TRENCH WITH 10' DISTANCE

77 - 12" X 12" X 10" TRENCH WITH 10' DISTANCE

78 - 12" X 12" X 10" TRENCH WITH 10' DISTANCE

79 - 12" X 12" X 10" TRENCH WITH 10' DISTANCE

80 - 12" X 12" X 10" TRENCH WITH 10' DISTANCE

81 - 12" X 12" X 10" TRENCH WITH 10' DISTANCE

82 - 12" X 12" X 10" TRENCH WITH 10' DISTANCE

83 - 12" X 12" X 10" TRENCH WITH 10' DISTANCE

84 - 12" X 12" X 10" TRENCH WITH 10' DISTANCE

85 - 12" X 12" X 10" TRENCH WITH 10' DISTANCE

86 - 12" X 12" X 10" TRENCH WITH 10' DISTANCE

87 - 12" X 12" X 10" TRENCH WITH 10' DISTANCE

88 - 12" X 12" X 10" TRENCH WITH 10' DISTANCE

89 - 12" X 12" X 10" TRENCH WITH 10' DISTANCE

90 - 12" X 12" X 10" TRENCH WITH 10' DISTANCE

91 - 12" X 12" X 10" TRENCH WITH 10' DISTANCE

92 - 12" X 12" X 10" TRENCH WITH 10' DISTANCE

93 - 12" X 12" X 10" TRENCH WITH 10' DISTANCE

94 - 12" X 12" X 10" TRENCH WITH 10' DISTANCE

95 - 12" X 12" X 10" TRENCH WITH 10' DISTANCE

96 - 12" X 12" X 10" TRENCH WITH 10' DISTANCE

97 - 12" X 12" X 10" TRENCH WITH 10' DISTANCE

98 - 12" X 12" X 10" TRENCH WITH 10' DISTANCE

99 - 12" X 12" X 10" TRENCH WITH 10' DISTANCE

100 - 12" X 12" X 10" TRENCH WITH 10' DISTANCE