

STATE	FED. AID PROJ. NO.	FISCAL YEAR	SHEET NO.	TOTAL SHEETS
MASS.			11	59

RECORD KEY NO. 600467

CONSTRUCTION PLAN NO. 1

HIGHWAY GUARD TYPE SS  
NONE

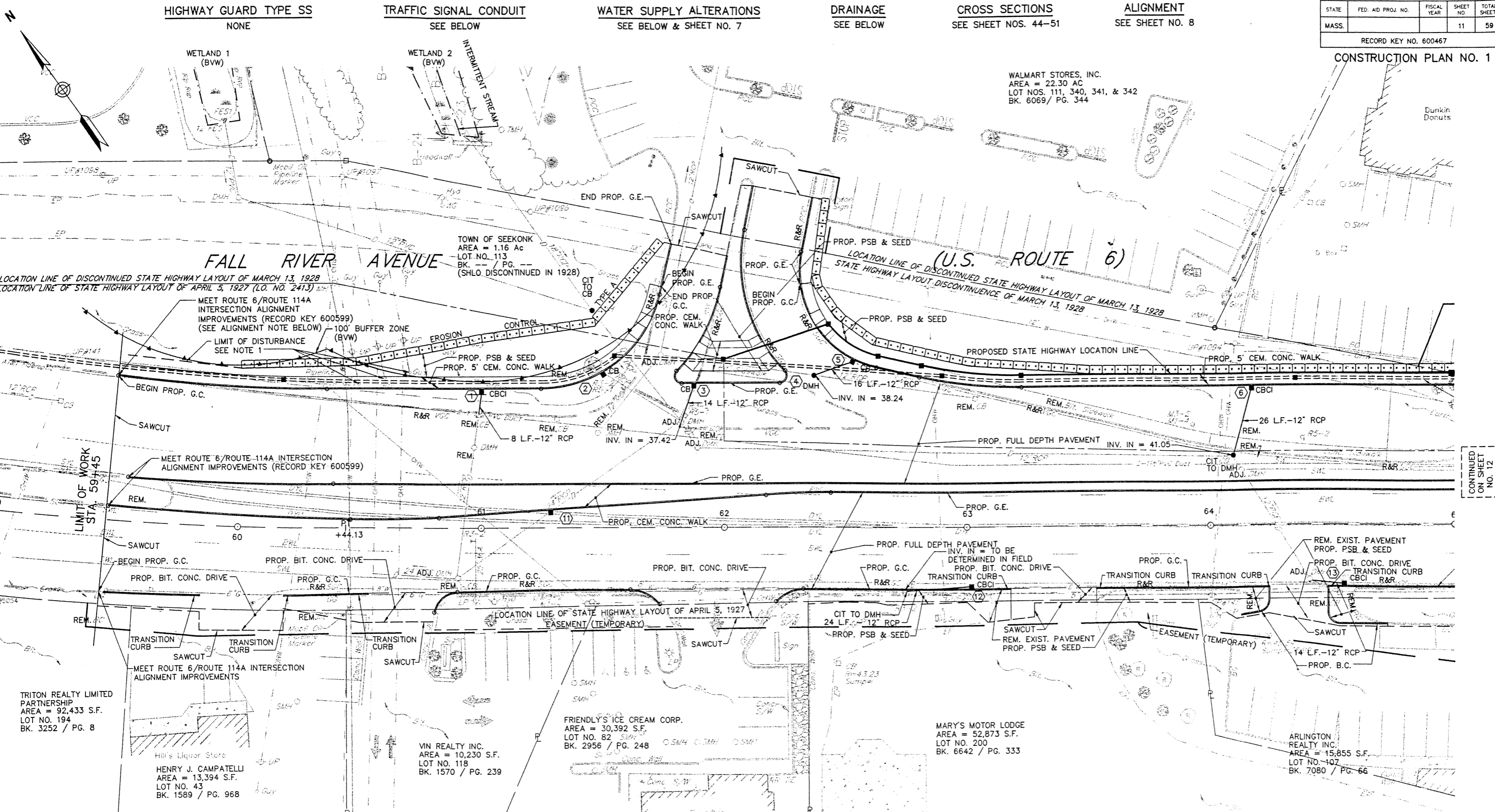
TRAFFIC SIGNAL CONDUIT  
SEE BELOW

WATER SUPPLY ALTERATIONS  
SEE BELOW & SHEET NO. 7

DRAINAGE  
SEE BELOW

CROSS SECTIONS  
SEE SHEET NOS. 44-51

ALIGNMENT  
SEE SHEET NO. 8



NO.	TYPE	STATION	RIM ELEV	INV ELEV IN	INV ELEV OUT	REMARKS
1	CBCI	60+99.51 56.00' LT.	41.12	-	37.12	REM EXIST CB CONNECT TO EXIST PIPE
2	CB	61+50.80 63.28' LT.	41.20	34.1±	34.1±	CONSTRUCT ON EXIST PIPE
3	CB	61+88.83 57.97' LT.	41.56	-	37.56	
4	DMH	62+37.24 62.02' LT.	42.25	38.24	-	CONSTRUCT ON EXIST PIPE
5	CB	62+54.42 68.93' LT.	41.90	-	38.40	
6	CB	64+14.93 56.00' LT.	45.31	-	41.31	
11	CB	61+28.66 6.20' LT.	42.78	30.4±	30.4±	CONSTRUCT ON EXIST PIPE

**CURB ALIGNMENT NOTE:**  
THE PROPOSED CURB ALIGNMENT AT THE WESTERN TERMINUS IS BASED ON THE DESIGN CURB ALIGNMENT AS ESTABLISHED BY THE ROUTE 6/ROUTE 114 INTERSECTION ALIGNMENT IMPROVEMENT PROJECT (MHD RECORD KEY 600599). THE CONTRACTOR SHALL FIELD VERIFY THE EXISTING CURB ALIGNMENT AND FURNISH THE INFORMATION TO MHD PRIOR TO SETTING THE FINAL CURB ALIGNMENT.

**NOTE:**  
1. THE GUY WIRES AND UTILITY POLES ARE BEING RELOCATED AS PART OF THE ROUTE 6/ROUTE 114 INTERSECTION ALIGNMENT IMPROVEMENT PROJECT (RECORD KEY 600599) LOCATION NOT KNOWN

CONTINUED ON SHEET NO. 12