

General Notes

1. PARCEL SHOWN IS LOCATED IN ZONING DISTRICT "RESIDENTIAL (R-3 & R-4)".
2. PARCEL SHOWN IS NOT LOCATED IN THE TOWN OF SEEKONK AQUICFER DISTRICT.
3. PARCEL SHOWN IS TO BE SERVICED BY AN INDIVIDUAL SEPTIC SYSTEM AND TOWN WATER.
4. OWNER OF RECORD: JANICE A. GORIAN & RONALD ROTONDO
4/6/9 ELM TREE FARM PROPERTIES
35 WESTWOOD ROAD
LINCOLN, RI 02885
5. DEED REFERENCE: BOOK 18383, PAGE 199
BRISTOL COUNTY REGISTRY OF DEEDS
(TALNONT DISTRICT)
6. WETLAND FLAGS HCA1 THRU HCA14 AND HCA1 THRU HCA14 WERE INSTALLED BY GEORGE H. HOVORNA OF HOVORNA CONSULTING ON NOVEMBER 23, 2012. THESE WETLAND FLAGS WERE LOCATED BY A FIELD SURVEY CONDUCTED BY PRO-LINE ENGINEERING, INC. ON DECEMBER 9, 2012.
7. WETLAND FLAGS HC22 THRU HC26 AND HCA1 THRU HCA12 WERE INSTALLED BY GEORGE H. HOVORNA OF HOVORNA CONSULTING ON APRIL 6, 2013. THESE WETLAND FLAGS WERE LOCATED BY A FIELD SURVEY CONDUCTED BY PRO-LINE ENGINEERING, INC. ON APRIL 11, 2013.
8. WETLAND FLAGS HCA15 THRU HCA20 AND HCB1 THRU HCB10 WERE INSTALLED BY GEORGE H. HOVORNA OF HOVORNA CONSULTING ON MAY 16, 2013. THESE WETLAND FLAGS WERE LOCATED BY A FIELD SURVEY CONDUCTED BY PRO-LINE ENGINEERING, INC. ON JUNE 4, 2013.
9. WETLAND FLAGS HCA5, HCA6 AND HC23 WERE MOVED OUT 15', 10' AND 35', RESPECTIVELY, PER RECOMMENDATION OF THE CONSERVATION COMMISSION MEMORANDUM DATED MAY 10, 2013, AND ARE SHOWN ON THIS PLAN AS HCA5R, HCA6R AND HC23R.

ANRAD Plan
(Existing Conditions)



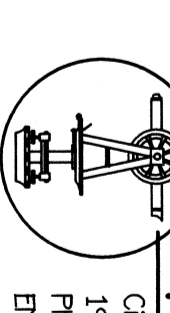
Special Permit -- Proposed 92 Units
Swan Brook Assisted Living Seekonk

A.P. 4 Lot 5
1530 Fall River Avenue, Seekonk, Massachusetts

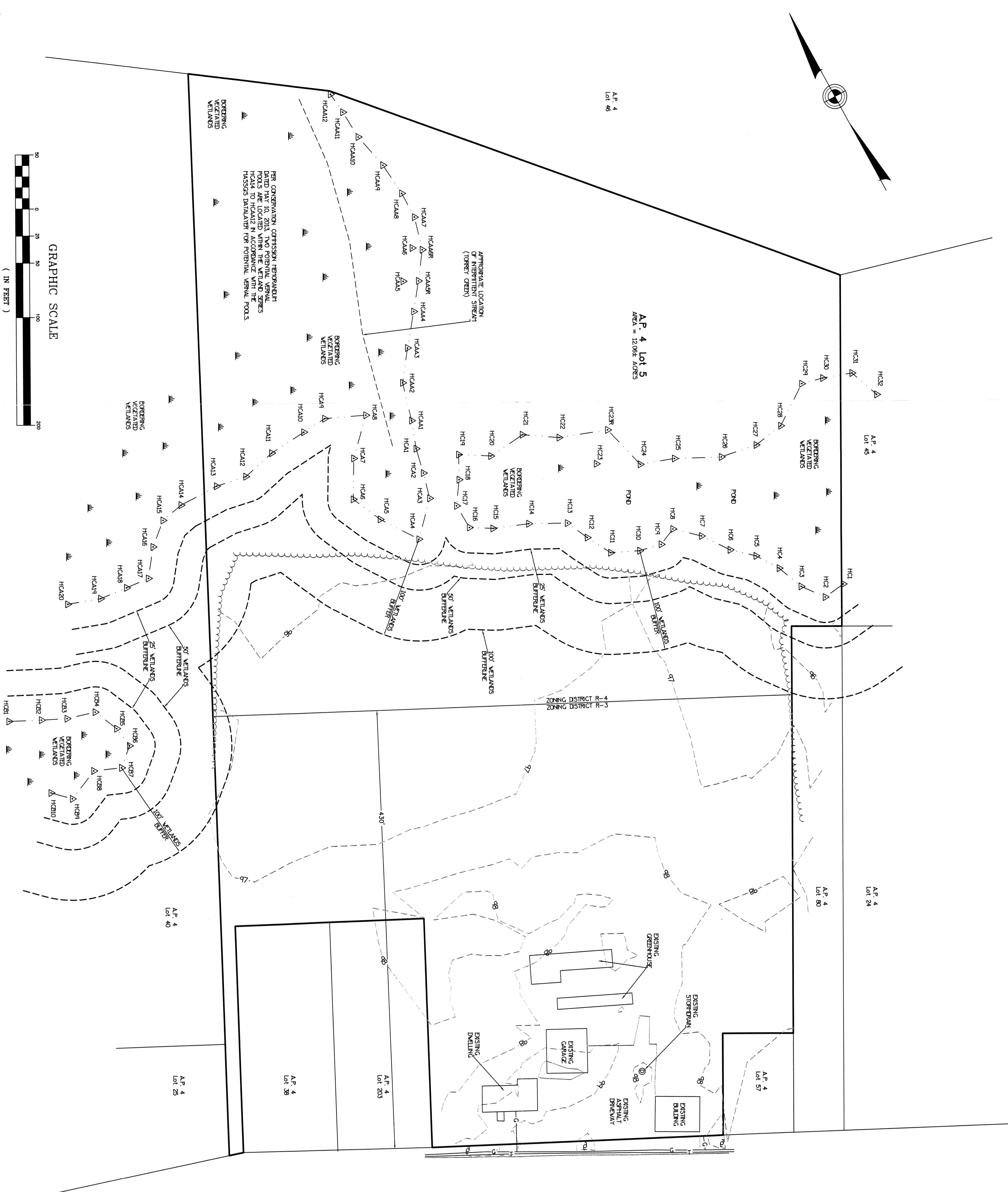
69-75a

PREPARED FOR
Mark Shore
924 Gardeners Neck Road, Swansea, Massachusetts 02777

PREPARED BY
Pro-Line Engineering, Inc.
Civil/Environmental Engineering & Land Surveying
190 GARDENERS NECK ROAD, SWANSEA, MA 02777
PHONE: 508/672-3137 FAX: 508/672-3307
EMAIL: PROLINEEN@COMCAST.NET



Date: March 7, 2013
Revised: June 4, 2013
Revised: June 18, 2013
Scale: 1" = 50'
Additional Flags
Con Comm Comments
Sheet 1 of 1



FALL RIVER (Route 6) AVENUE

