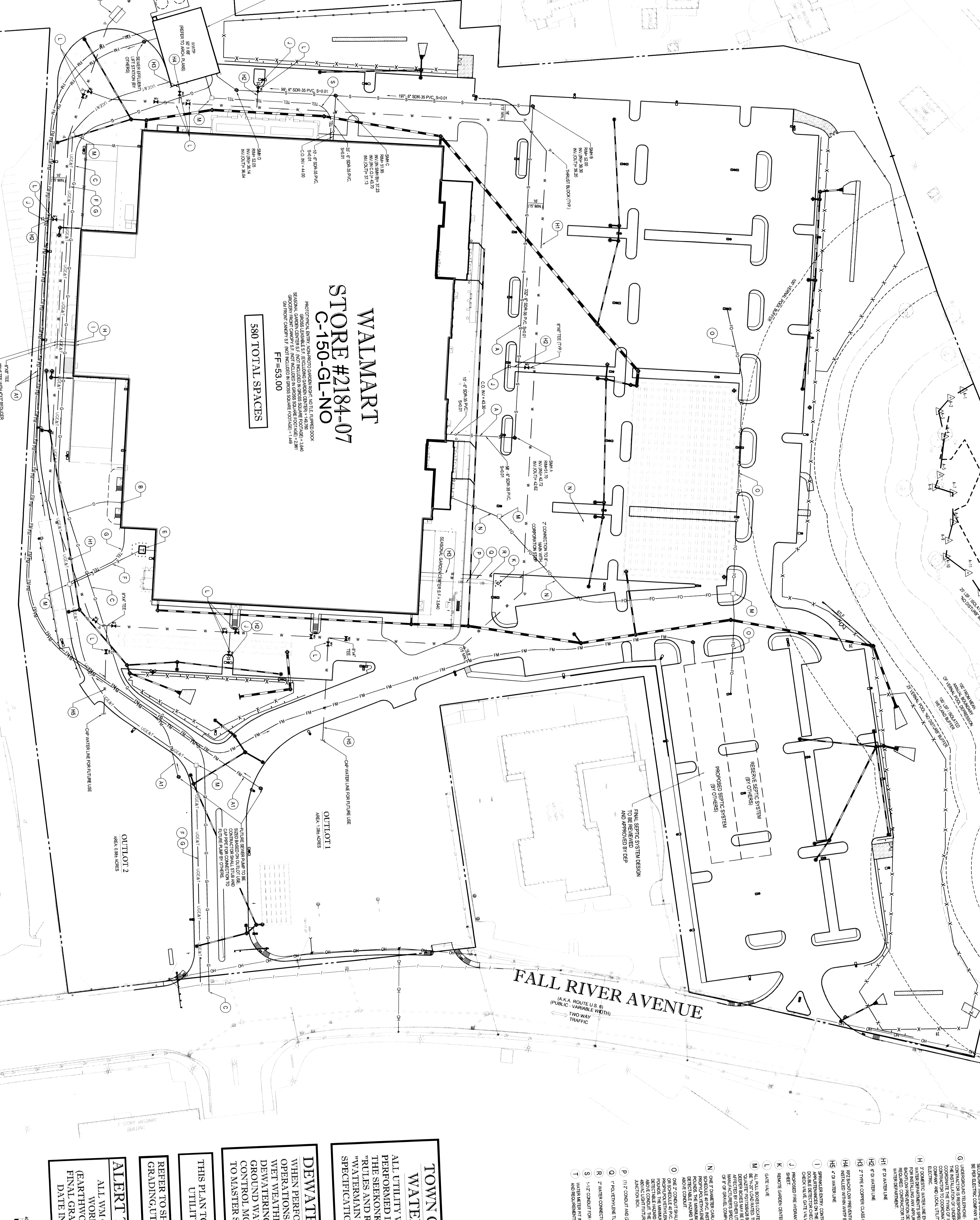


MABEL DRIVE
(A.K.A. MABEL COURT)
(PUBLIC - 40' WIDE)

FALL RIVER AVENUE
(A.K.A. ROUTE U.S. 8)
(PUBLIC - 40' WIDE)
TWO WAY TRAFFIC



WALMART
STORE #2184-07
C-150-GL-NO
580 TOTAL SPACES

OUTLOT 1
AREA 10A, 10B, 10C, 10D, 10E, 10F, 10G, 10H, 10I, 10J, 10K, 10L, 10M, 10N, 10O, 10P, 10Q, 10R, 10S, 10T, 10U, 10V, 10W, 10X, 10Y, 10Z

OUTLOT 2
AREA 11A, 11B, 11C, 11D, 11E, 11F, 11G, 11H, 11I, 11J, 11K, 11L, 11M, 11N, 11O, 11P, 11Q, 11R, 11S, 11T, 11U, 11V, 11W, 11X, 11Y, 11Z

UTILITY LEGEND

- A. SANITARY SEWER UTILITY - COMPANION WITH WATERMAIN TRENCH
- B. SANITARY SEWER UTILITY - COMPANION WITH WATERMAIN TRENCH
- C. SANITARY SEWER UTILITY - COMPANION WITH WATERMAIN TRENCH
- D. WATER MAIN
- E. STORM SEWER
- F. GAS
- G. ELECTRIC
- H. TELEPHONE
- I. OPTICAL FIBER
- J. CABLE TV
- K. FIBER OPTIC
- L. FIBER OPTIC
- M. FIBER OPTIC
- N. FIBER OPTIC
- O. FIBER OPTIC
- P. FIBER OPTIC
- Q. FIBER OPTIC
- R. FIBER OPTIC
- S. FIBER OPTIC
- T. FIBER OPTIC

TOWN OF SEEKONK WATER DISTRICT
ALL UTILITY WORK SHALL BE PERFORMED IN ACCORDANCE WITH THE SEEKONK WATER DISTRICT RULES AND REGULATIONS AND "WATERMAIN INSTALLATION SPECIFICATIONS", AS APPLICABLE.

DEWATERING NOTE:
WHEN PERFORMING GRADING OPERATIONS DURING PERIODS OF WET WEATHER, PROVIDE ADEQUATE DRAINAGE AND DEWATERING WATER MANAGEMENT TO CONTROL MOISTURE OF SOILS. REFER TO MASTER SITE SPECIFICATIONS.

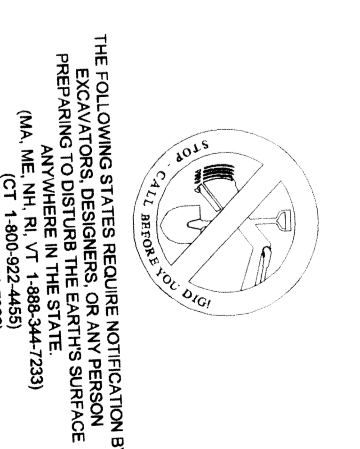
THIS PLAN TO BE UTILIZED FOR SITE UTILITY PURPOSES ONLY.
REFER TO SHEET T-2 FOR GRADING/UTILITY NOTES & LEGEND

ALERT TO CONTRACTOR
ALL WM GENERAL CONTRACTOR WORK TO BE COMPLETED (EARTHWORK, FINAL UTILITIES, AND FINAL GRADING) BY THE MILESTONE DATE IN PROJECT DOCUMENTS.

BOHLER ENGINEERING
CORPORATE OFFICE
SURVEYORS
PROJECT MANAGERS
ENVIRONMENTAL CONSULTANTS
LANDSCAPE ARCHITECTS

OFFICES:
• CHALFONTE, PA
• FREDERICKSBURG, VA
• FORT LAUDERDALE, FL
• HARRISBURG, PA
• HENRIETTA, NY
• HUNTSVILLE, AL
• JEROME, VT
• LEANING ROCK, VA
• MARYLAND, MD
• NEW BRUNSWICK, NJ
• PHOENIX, AZ
• RICHMOND, VA
• ROCKY HILL, CT
• SEASIDE, CA
• SHELTON, CT
• SOUTH BOROUGHS, MA
• TOWSON, MD
• WASHINGTON, DC

REV#	DATE	DESCRIPTION
1	10/01/11	PRELIMINARY
2	10/01/11	REVISED
3	11/14/11	TOWN REVIEW
4	12/14/11	CONTRACTOR COMMENTS
5	01/23/12	FINAL COMMENTS



Walmart
STORE # 2184-07
PROPOSED RETAIL DEVELOPMENT
1075 25, 26, 27, 28, 29, 30, 31, 32, 33, 34, 35, 36, 37, 38, 39, 40, 41, 42, 43, 44, 45, 46, 47
1000 FALL RIVER AVENUE & TOWN OF SEEKONK
BRISTOL COUNTY, MA

BOHLER ENGINEERING
332 TURNPIKE ROAD
SOUTHBOROUGH, MA 01772
Phone: (508) 861-8800
www.BohlerEngineering.com

M.D. STEINHAUS ENGINEERS
100 MAIN STREET
NEW BRUNSWICK, NJ 08901
Phone: (908) 851-1100
www.MDSteinhaus.com

PERMIT SET
PROJECT NO.:
DATE: 10/01/11
DRAWN BY: MDS/MLK
CHECKED BY: MDS/MLK
DATE: 10/01/11

SITE DEVELOPMENT PLANS FOR WALMART STORE # 2184-07 PROPOSED RETAIL DEVELOPMENT
SHEET NUMBER: **C-3** OF 18
REV: 5/01/2012