

**EROSION DETAILS**

OFF-SITE RUN-ON AREA #1  
 AREA 1: 4.98 AC, 2.12 AC, 2.47 AC, 0.64 AC  
 AREA 2: 2.12 AC, 2.47 AC, 0.98 AC, 0.98 AC  
 AREA 3: 0.64 AC, 2.79 AC, 0.98 AC, 0.98 AC

**EROSION NOTES**

1. ALL EROSION CONTROL MEASURES SHALL BE INSTALLED PRIOR TO THE START OF CONSTRUCTION.  
 2. EROSION CONTROL MEASURES SHALL BE MAINTAINED THROUGHOUT CONSTRUCTION.  
 3. EROSION CONTROL MEASURES SHALL BE REMOVED UPON COMPLETION OF CONSTRUCTION.

**OFF-SITE RUN-ON ACREAGE SUMMARY\***

OFF-SITE DRAINAGE AREA	ACREAGE	ASBESTOS	LEAD	COVER TYPE
AREA 1	2.12 AC	24%	0.98%	WOODED
AREA 2	2.47 AC	28%	1.98%	WOODED
AREA 3	0.64 AC	27%	0.98%	WOODED

**THIS PLAN TO BE UTILIZED FOR SOIL EROSION & SEDIMENTATION CONTROL PURPOSES ONLY. CONTRACTOR TO PROTECT ALL INLETS THAT MAY BE SUBJECT TO SILTATION.**

REFER TO LANDSCAPING PLANS FOR PERMANENT SEEDING MIX/VEGETATIVE STABILIZATION METHODS.

**BMP MAINTENANCE EROSION NOTES**

1. ALL EROSION CONTROL MEASURES SHALL BE MAINTAINED THROUGHOUT CONSTRUCTION.
2. EROSION CONTROL MEASURES SHALL BE REMOVED UPON COMPLETION OF CONSTRUCTION.
3. EROSION CONTROL MEASURES SHALL BE INSTALLED PRIOR TO THE START OF CONSTRUCTION.
4. EROSION CONTROL MEASURES SHALL BE MAINTAINED THROUGHOUT CONSTRUCTION.
5. EROSION CONTROL MEASURES SHALL BE REMOVED UPON COMPLETION OF CONSTRUCTION.
6. EROSION CONTROL MEASURES SHALL BE INSTALLED PRIOR TO THE START OF CONSTRUCTION.
7. EROSION CONTROL MEASURES SHALL BE MAINTAINED THROUGHOUT CONSTRUCTION.
8. EROSION CONTROL MEASURES SHALL BE REMOVED UPON COMPLETION OF CONSTRUCTION.
9. EROSION CONTROL MEASURES SHALL BE INSTALLED PRIOR TO THE START OF CONSTRUCTION.
10. EROSION CONTROL MEASURES SHALL BE MAINTAINED THROUGHOUT CONSTRUCTION.
11. EROSION CONTROL MEASURES SHALL BE REMOVED UPON COMPLETION OF CONSTRUCTION.

**ACREAGE SUMMARY**

ACREAGE SUMMARY (IN ACRES)	224
ON-SITE DISTURBED AREA	17
OFF-SITE DISTURBED AREA	1
TOTAL DISTURBED AREA (MULTIPLY BY 1.0)	18
PERMITS REQUIRED AT COMPLETION	15
PERMITS REQUIRED AT CONSTRUCTION	8

**NOTE:** IN THE EVENT THAT THE PERFORMANCE OF THIS DEVELOPMENT AND/OR USE OF BORROW, THE DEVELOPER SHALL BE RESPONSIBLE FOR OBTAINING ALL NECESSARY PERMITS AND APPROVALS FROM THE APPROPRIATE AGENCIES PRIOR TO THE COMMENCEMENT OF SUCH ACTIVITIES. ANY VIOLATION OF SUCH PERMITS AND APPROVALS SHALL BE THE RESPONSIBILITY OF THE DEVELOPER AND SHALL BE SUBJECT TO THE PENALTIES AND CONDITIONS APPLICABLE TO SUCH SITES.

**SOIL EROSION/SEDIMENTATION CONTROL OPERATION THE SCHEDULE**

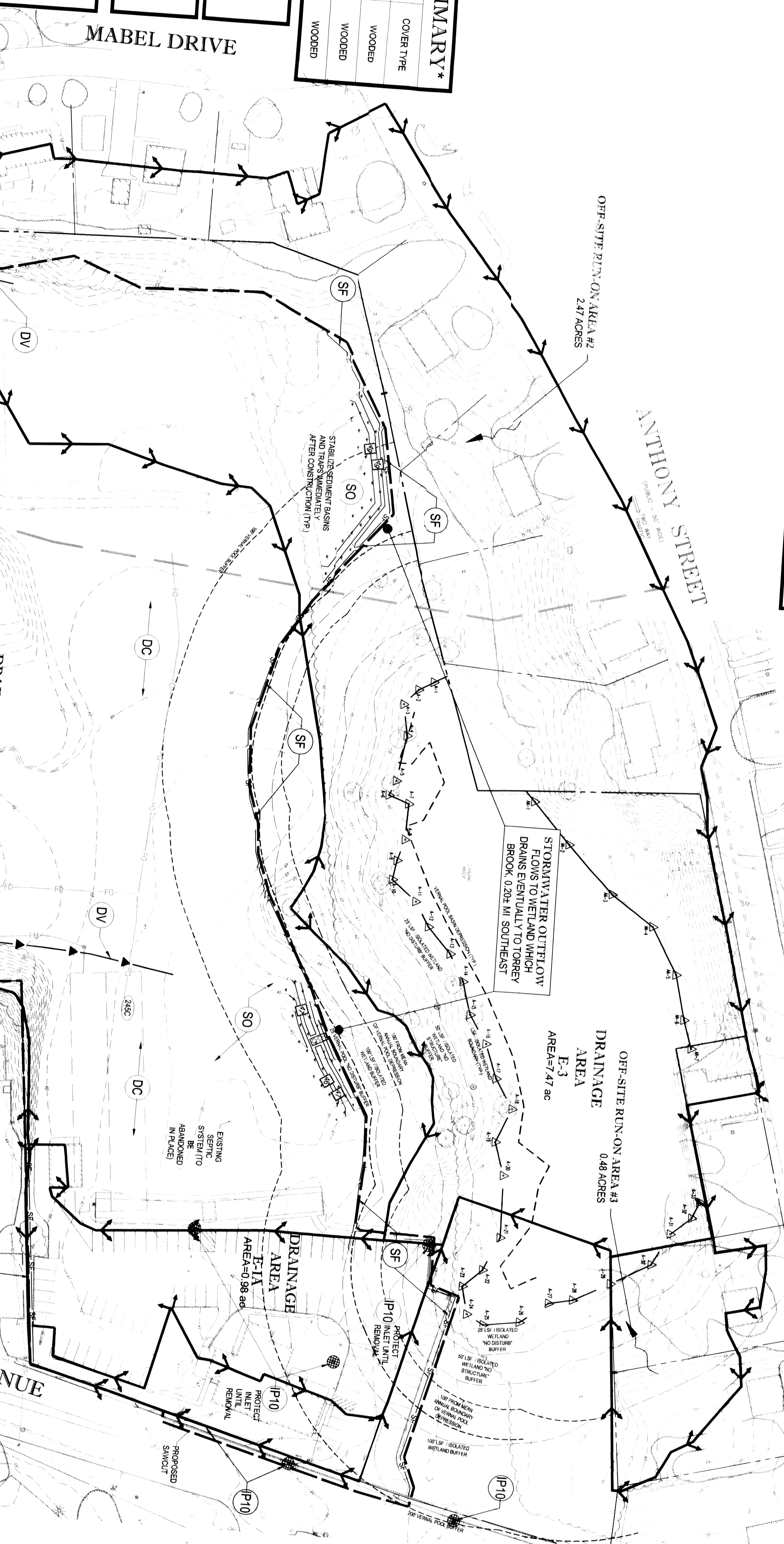
CONSTRUCTION SEQUENCE	DATE
TEMPORARY EROSION CONTROL MEASURES	JAN FEB MAR APR MAY JUN JUL AUG SEPT OCT NOV DEC
PERMITS REQUIRED AT CONSTRUCTION	JAN FEB MAR APR MAY JUN JUL AUG SEPT OCT NOV DEC
PERMITS REQUIRED AT COMPLETION	JAN FEB MAR APR MAY JUN JUL AUG SEPT OCT NOV DEC

**NOTE:** CONTRACTOR SHALL MAINTAIN THE SCHEDULE WITH THEIR SPECIFIC PROJECT SCHEDULE. THE SCHEDULE MUST COMPLY WITH THE SCHEDULE OF CONSTRUCTION.

**OFF-SITE MATERIAL AREAS INFORMATION**

BORROW SITE NAME	DEPOSIT SITE NAME
BORROW SITE ADDRESS	DEPOSIT SITE ADDRESS
BORROW SITE HOLDER	DEPOSIT SITE HOLDER
BORROW SITE PERMIT NO.	DEPOSIT SITE PERMIT NO.
BORROW SITE REMITTING AGENCY:	DEPOSIT SITE REMITTING AGENCY:

**NOTE:** CONTRACTOR SHALL MAINTAIN BORROW AND DEPOSIT INFORMATION ABOVE THROUGHOUT CONSTRUCTION. BORROW AND DEPOSIT INFORMATION MUST BE MAINTAINED THROUGHOUT CONSTRUCTION. CONTRACTOR SHALL MAINTAIN BORROW AND DEPOSIT INFORMATION THROUGHOUT CONSTRUCTION.

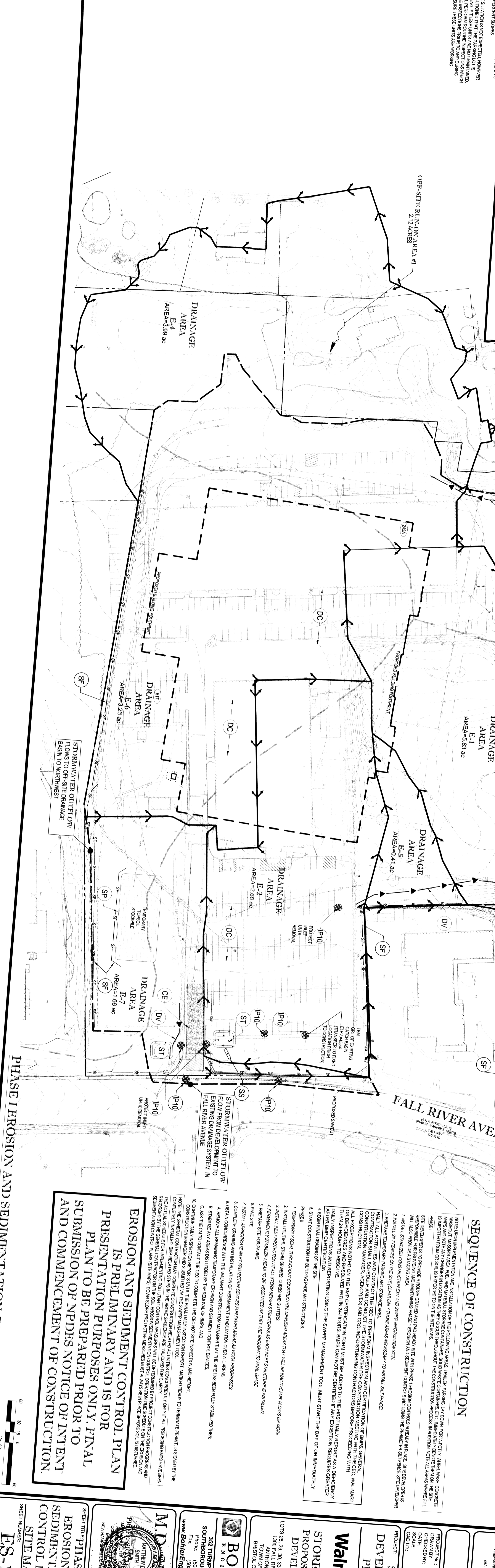


**GENERAL EROSION AND SEDIMENT CONTROL NOTES**

1. CONTRACTOR SHALL MAINTAIN THE SCHEDULE WITH THEIR SPECIFIC PROJECT SCHEDULE.
2. EROSION CONTROL MEASURES SHALL BE INSTALLED PRIOR TO THE START OF CONSTRUCTION.
3. EROSION CONTROL MEASURES SHALL BE MAINTAINED THROUGHOUT CONSTRUCTION.
4. EROSION CONTROL MEASURES SHALL BE REMOVED UPON COMPLETION OF CONSTRUCTION.
5. EROSION CONTROL MEASURES SHALL BE INSTALLED PRIOR TO THE START OF CONSTRUCTION.
6. EROSION CONTROL MEASURES SHALL BE MAINTAINED THROUGHOUT CONSTRUCTION.
7. EROSION CONTROL MEASURES SHALL BE REMOVED UPON COMPLETION OF CONSTRUCTION.
8. EROSION CONTROL MEASURES SHALL BE INSTALLED PRIOR TO THE START OF CONSTRUCTION.
9. EROSION CONTROL MEASURES SHALL BE MAINTAINED THROUGHOUT CONSTRUCTION.
10. EROSION CONTROL MEASURES SHALL BE REMOVED UPON COMPLETION OF CONSTRUCTION.
11. EROSION CONTROL MEASURES SHALL BE INSTALLED PRIOR TO THE START OF CONSTRUCTION.
12. EROSION CONTROL MEASURES SHALL BE MAINTAINED THROUGHOUT CONSTRUCTION.
13. EROSION CONTROL MEASURES SHALL BE REMOVED UPON COMPLETION OF CONSTRUCTION.
14. EROSION CONTROL MEASURES SHALL BE INSTALLED PRIOR TO THE START OF CONSTRUCTION.
15. EROSION CONTROL MEASURES SHALL BE MAINTAINED THROUGHOUT CONSTRUCTION.
16. EROSION CONTROL MEASURES SHALL BE REMOVED UPON COMPLETION OF CONSTRUCTION.
17. EROSION CONTROL MEASURES SHALL BE INSTALLED PRIOR TO THE START OF CONSTRUCTION.
18. EROSION CONTROL MEASURES SHALL BE MAINTAINED THROUGHOUT CONSTRUCTION.
19. EROSION CONTROL MEASURES SHALL BE REMOVED UPON COMPLETION OF CONSTRUCTION.
20. EROSION CONTROL MEASURES SHALL BE INSTALLED PRIOR TO THE START OF CONSTRUCTION.
21. EROSION CONTROL MEASURES SHALL BE MAINTAINED THROUGHOUT CONSTRUCTION.
22. EROSION CONTROL MEASURES SHALL BE REMOVED UPON COMPLETION OF CONSTRUCTION.

**SEQUENCE OF CONSTRUCTION**

1. EXISTING SITE CONDITIONS SHALL BE MAINTAINED THROUGHOUT CONSTRUCTION.
2. EROSION CONTROL MEASURES SHALL BE INSTALLED PRIOR TO THE START OF CONSTRUCTION.
3. EROSION CONTROL MEASURES SHALL BE MAINTAINED THROUGHOUT CONSTRUCTION.
4. EROSION CONTROL MEASURES SHALL BE REMOVED UPON COMPLETION OF CONSTRUCTION.
5. EROSION CONTROL MEASURES SHALL BE INSTALLED PRIOR TO THE START OF CONSTRUCTION.
6. EROSION CONTROL MEASURES SHALL BE MAINTAINED THROUGHOUT CONSTRUCTION.
7. EROSION CONTROL MEASURES SHALL BE REMOVED UPON COMPLETION OF CONSTRUCTION.
8. EROSION CONTROL MEASURES SHALL BE INSTALLED PRIOR TO THE START OF CONSTRUCTION.
9. EROSION CONTROL MEASURES SHALL BE MAINTAINED THROUGHOUT CONSTRUCTION.
10. EROSION CONTROL MEASURES SHALL BE REMOVED UPON COMPLETION OF CONSTRUCTION.
11. EROSION CONTROL MEASURES SHALL BE INSTALLED PRIOR TO THE START OF CONSTRUCTION.
12. EROSION CONTROL MEASURES SHALL BE MAINTAINED THROUGHOUT CONSTRUCTION.
13. EROSION CONTROL MEASURES SHALL BE REMOVED UPON COMPLETION OF CONSTRUCTION.
14. EROSION CONTROL MEASURES SHALL BE INSTALLED PRIOR TO THE START OF CONSTRUCTION.
15. EROSION CONTROL MEASURES SHALL BE MAINTAINED THROUGHOUT CONSTRUCTION.
16. EROSION CONTROL MEASURES SHALL BE REMOVED UPON COMPLETION OF CONSTRUCTION.
17. EROSION CONTROL MEASURES SHALL BE INSTALLED PRIOR TO THE START OF CONSTRUCTION.
18. EROSION CONTROL MEASURES SHALL BE MAINTAINED THROUGHOUT CONSTRUCTION.
19. EROSION CONTROL MEASURES SHALL BE REMOVED UPON COMPLETION OF CONSTRUCTION.
20. EROSION CONTROL MEASURES SHALL BE INSTALLED PRIOR TO THE START OF CONSTRUCTION.
21. EROSION CONTROL MEASURES SHALL BE MAINTAINED THROUGHOUT CONSTRUCTION.
22. EROSION CONTROL MEASURES SHALL BE REMOVED UPON COMPLETION OF CONSTRUCTION.



**BOHLER ENGINEERING**

CIVIL & CONSULTING ENGINEERS

COMPOUND OFFICE: WARREN, NJ

PROJECT MANAGERS: ENVIRONMENTAL CONSULTANTS

LANDSCAPE ARCHITECTS

Walmart STORE # 2184-07 PROPOSED RETAIL DEVELOPMENT

333 TORRANCE ROAD SOUTHBRIDGE, NJ 07093

BOHLER ENGINEERING, INC. 1000 FIVE POINTS DRIVE SOUTHBRIDGE, NJ 07093

PHASE I EROSION AND SEDIMENTATION CONTROL PLAN/SITE MAP

ES-1 OF 18

REVISED 02/2012