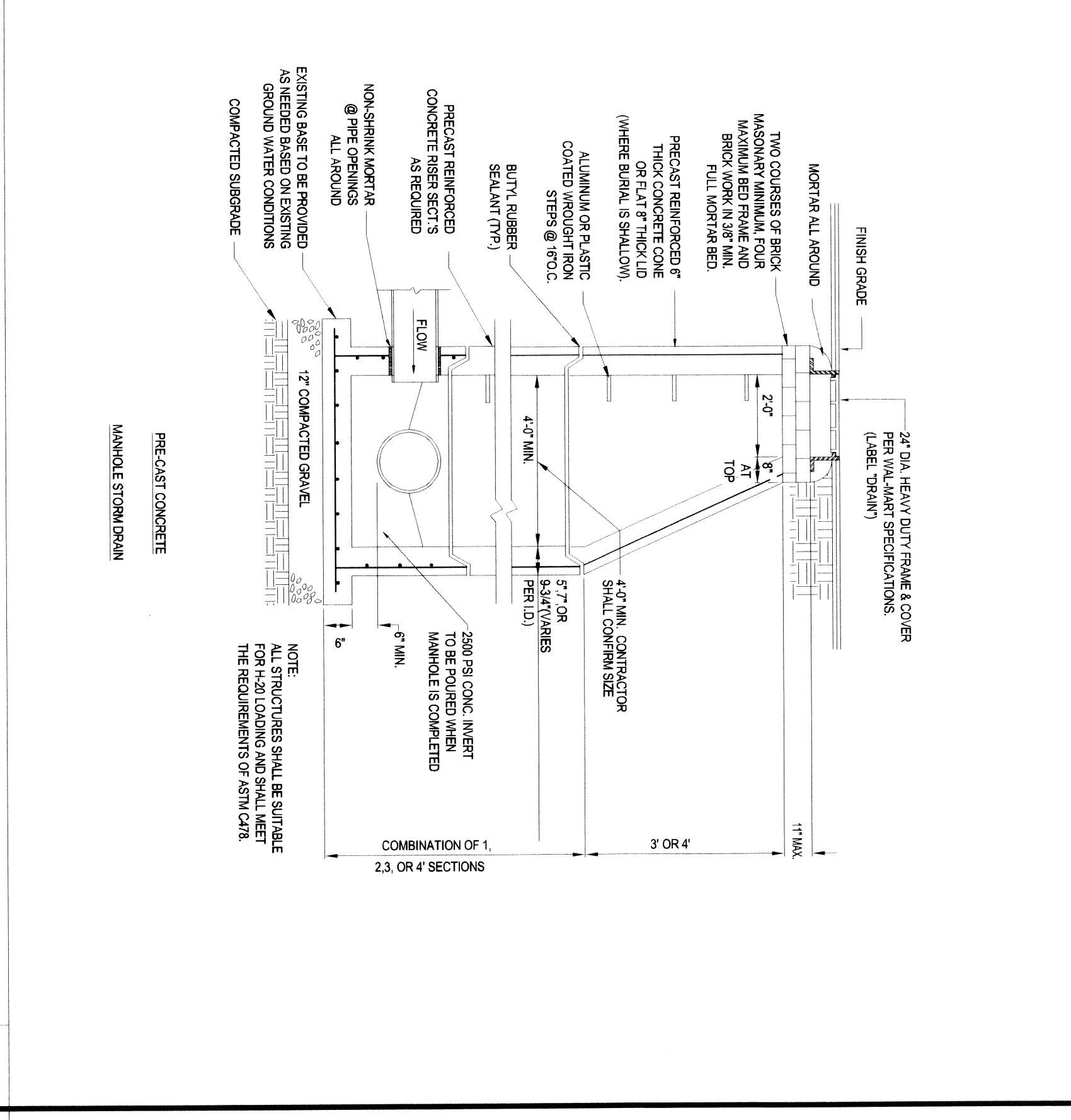


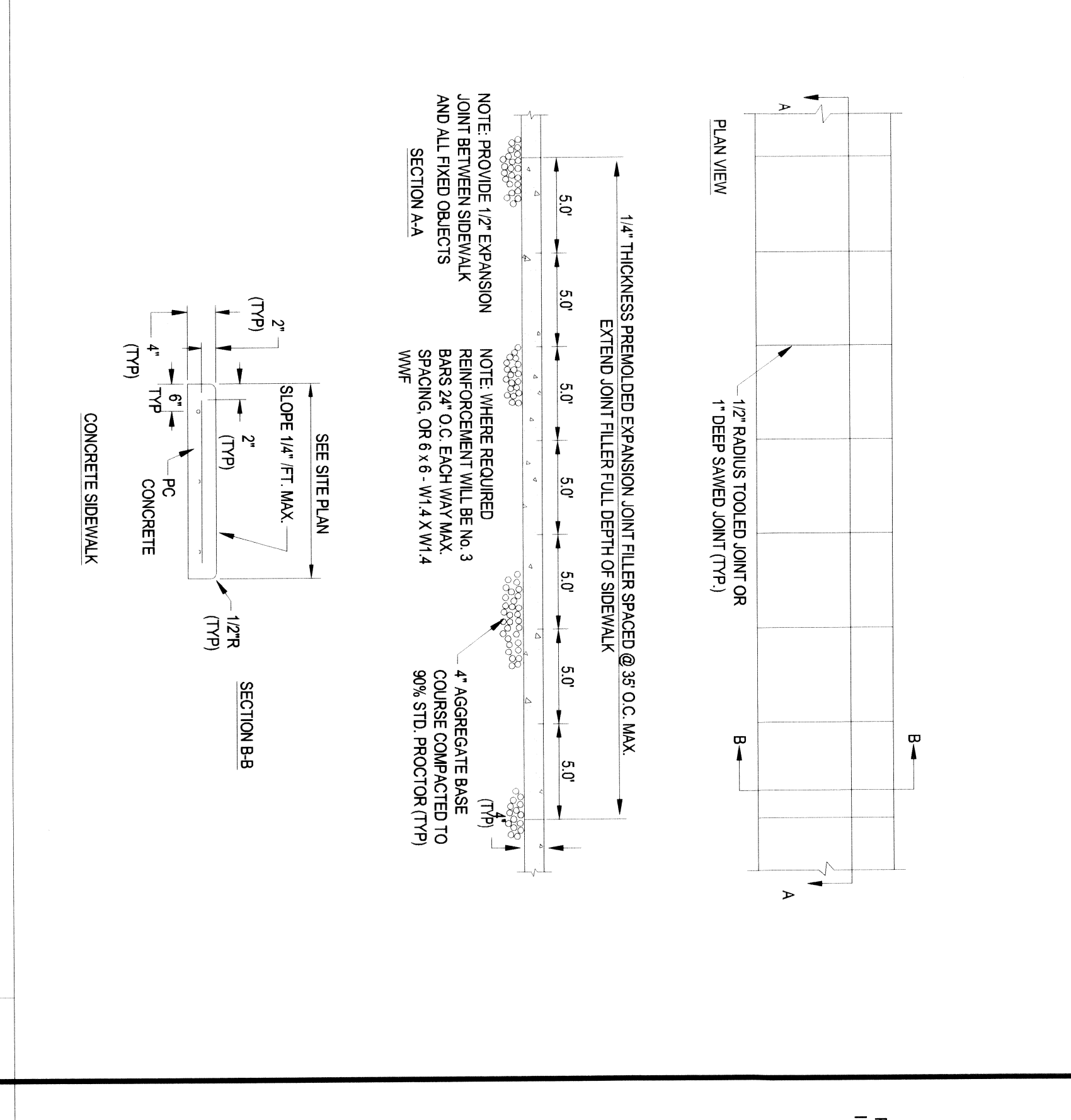
GUIDE RAIL (TYP)

N.T.S.



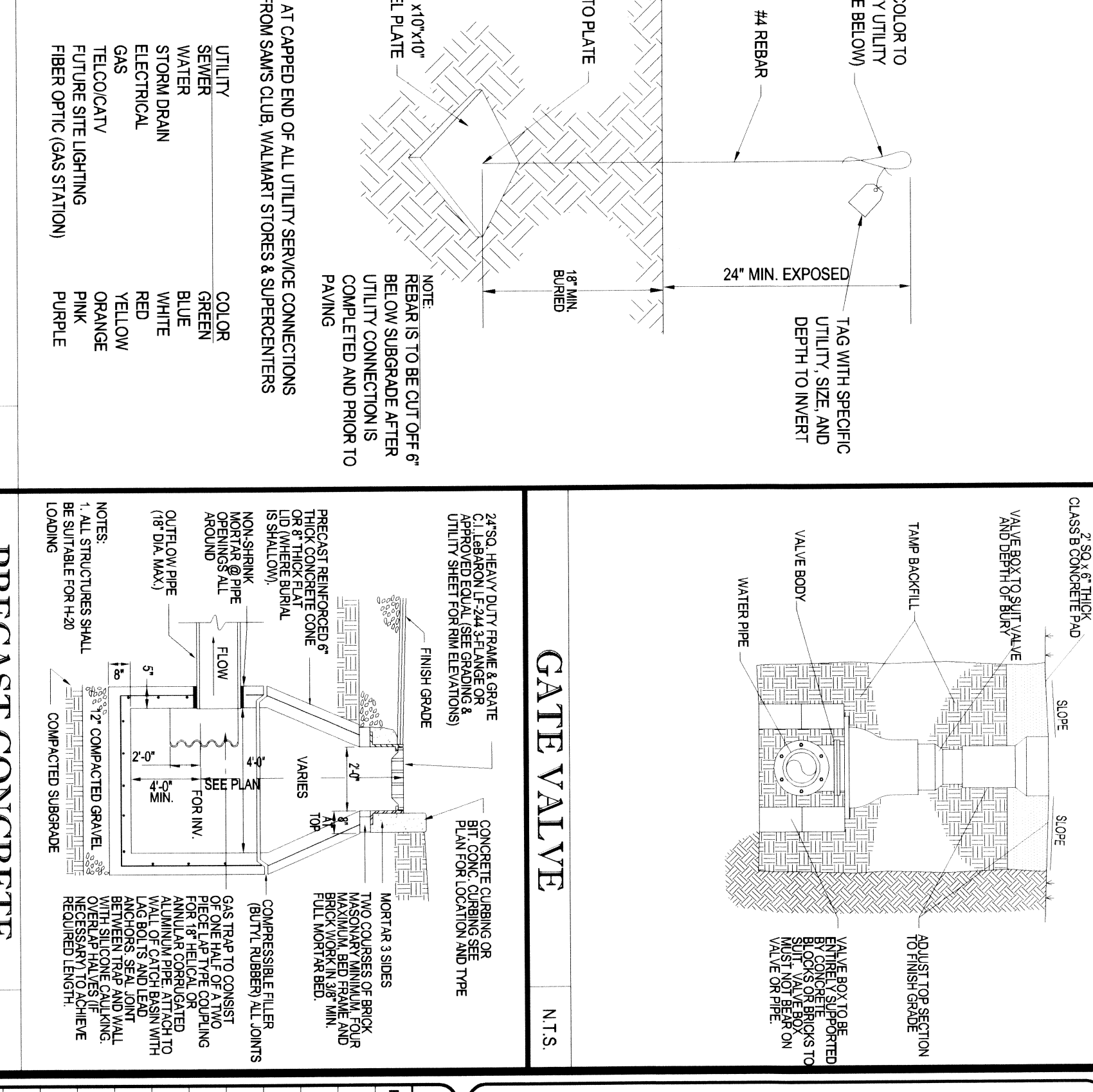
PRE-CAST CONCRETE MANHOLE STORM DRAIN

N.T.S.



SIDEWALK DETAILS

N.T.S.

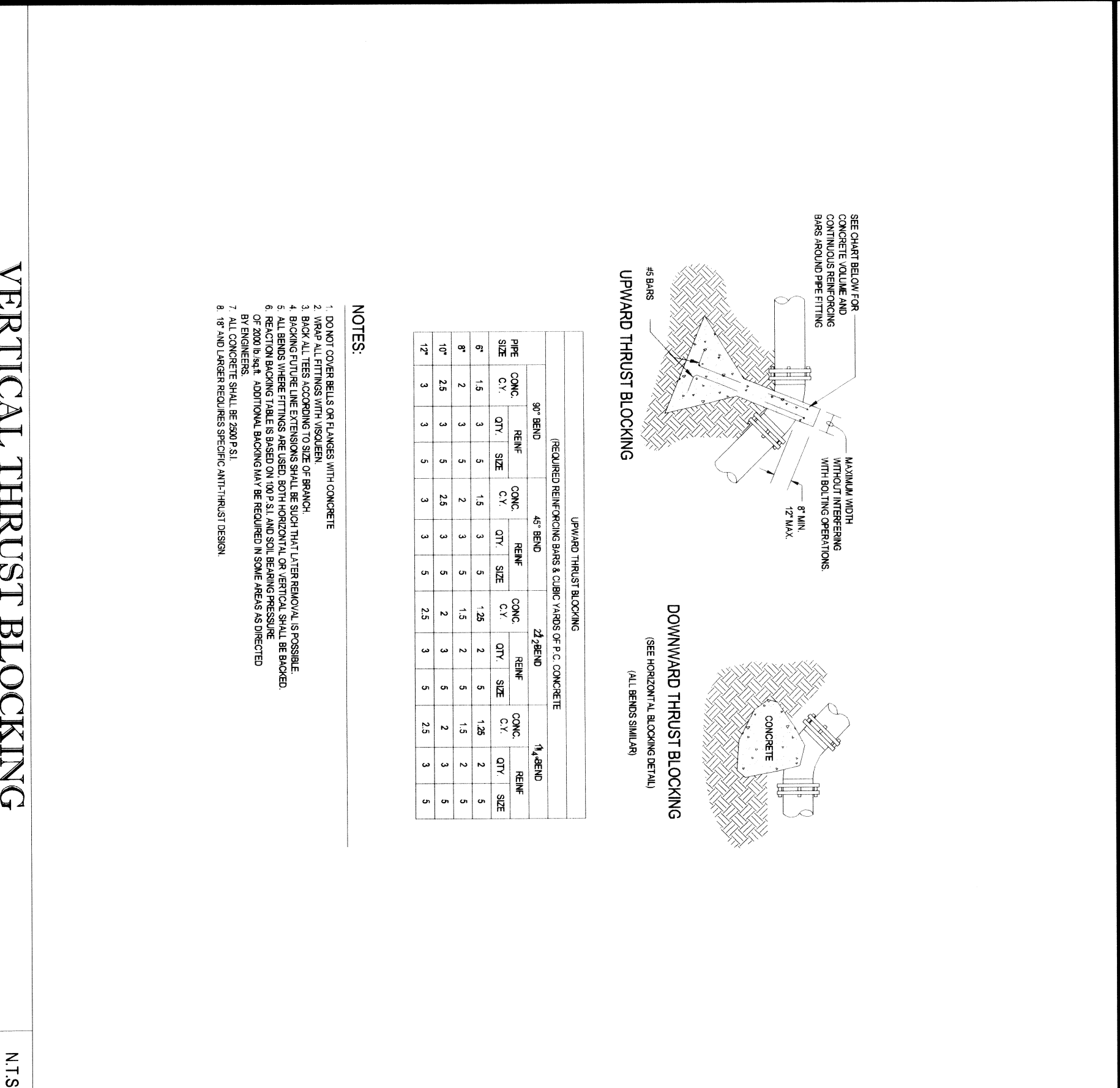


POC LOCATION

N.T.S.

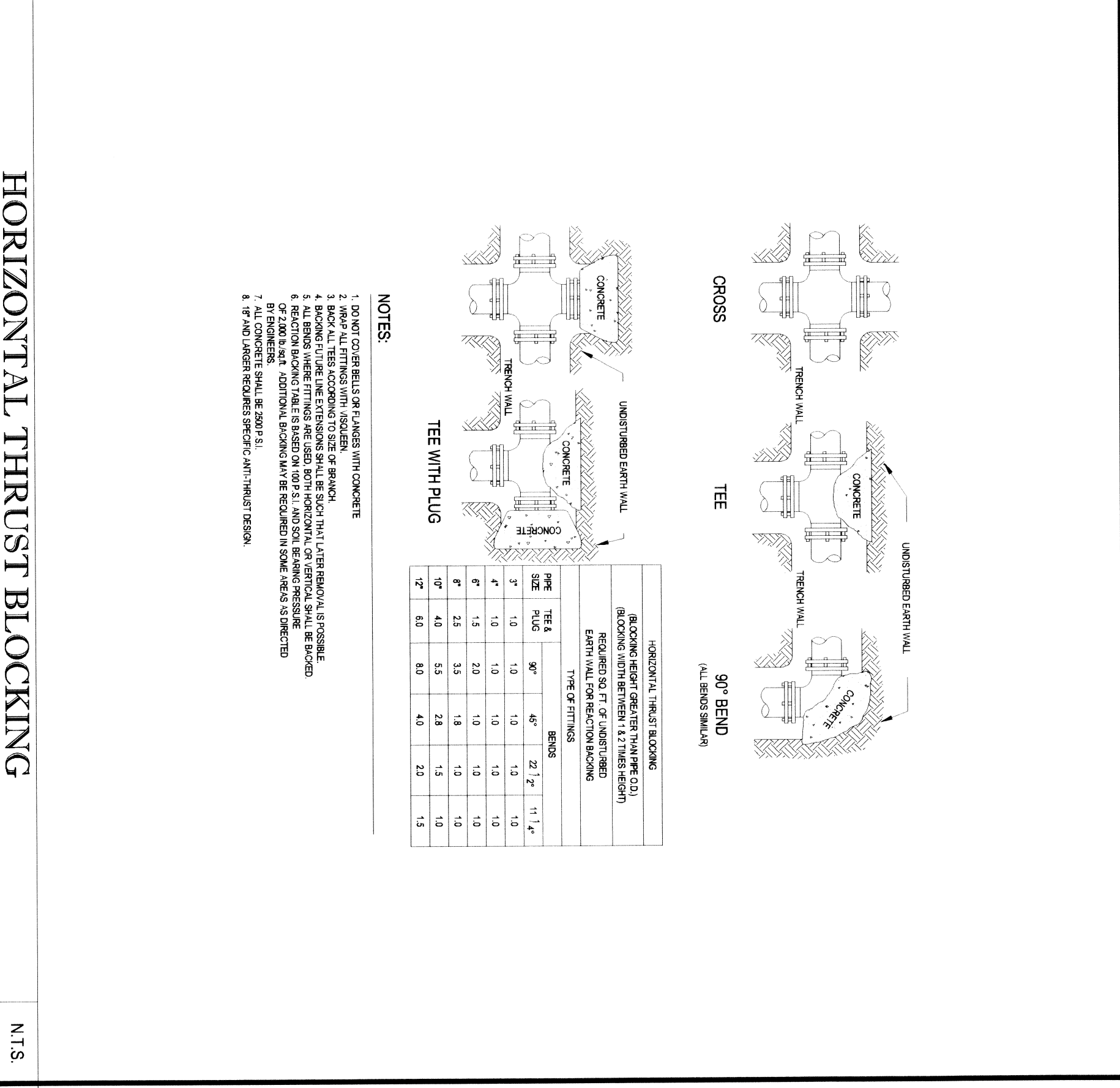
PRECAST CONCRETE DEEP SWAMP CATCH BASIN

N.T.S.



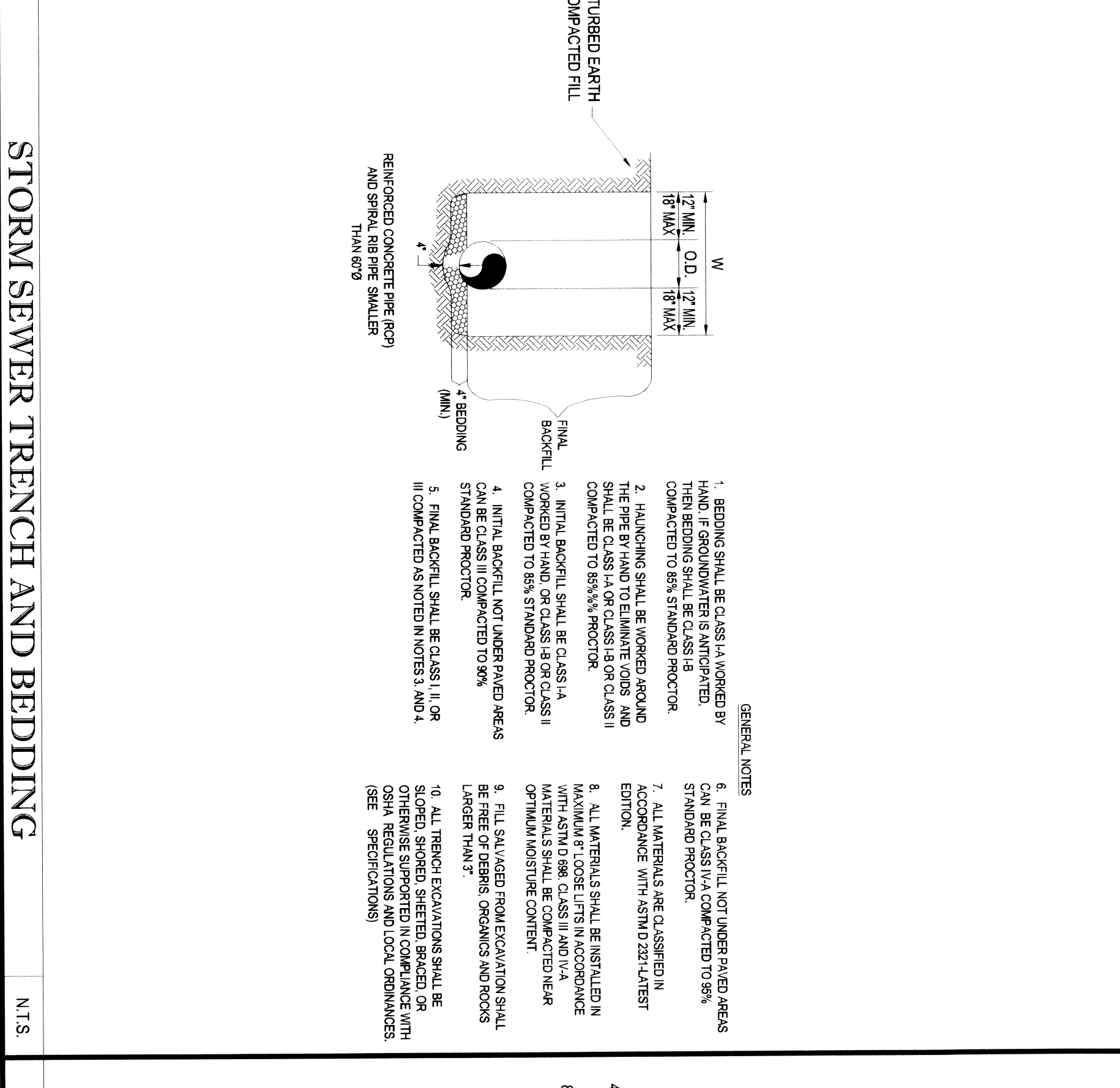
VERTICAL THRUST BLOCKING

N.T.S.



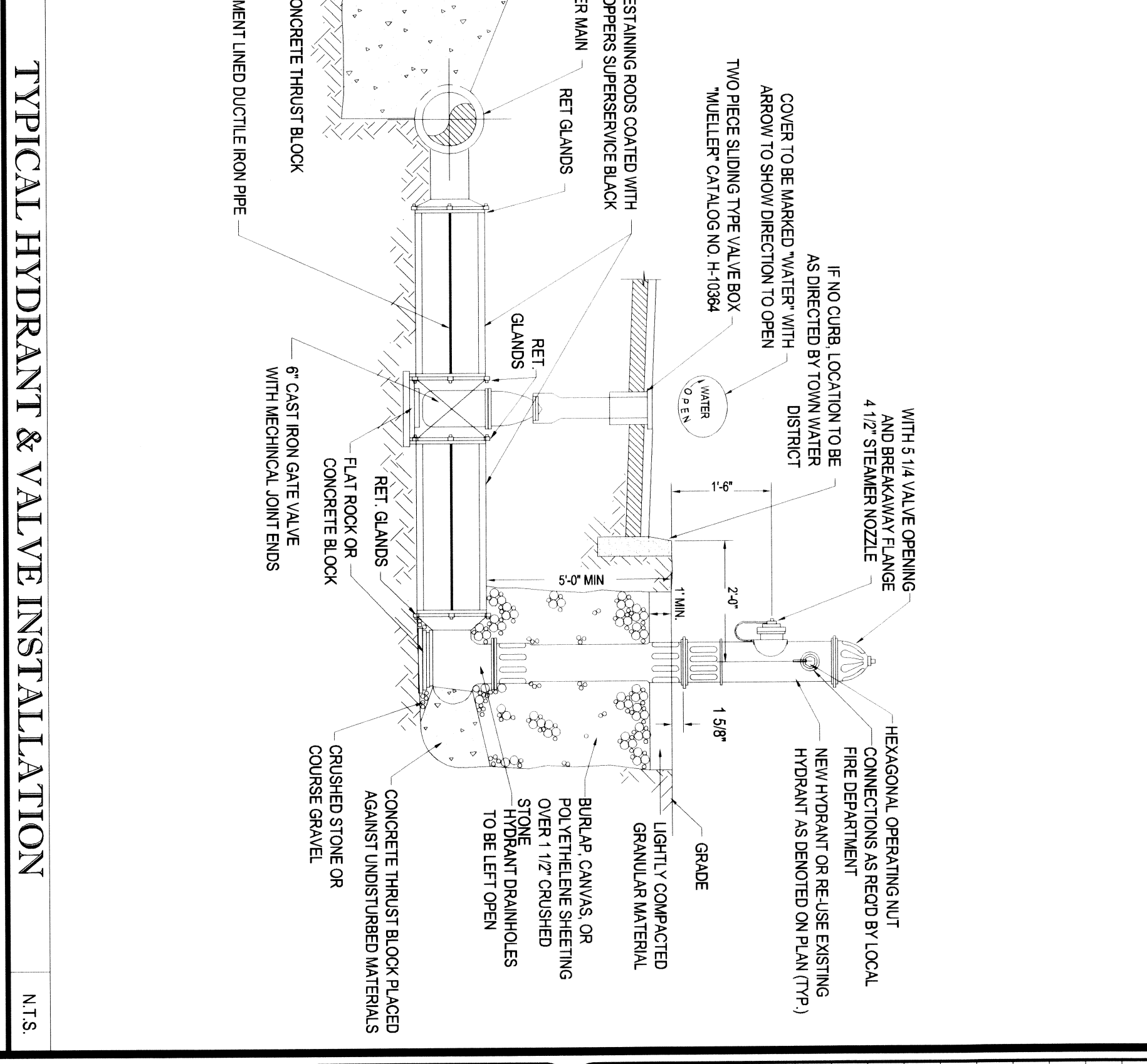
HORIZONTAL THRUST BLOCKING

N.T.S.



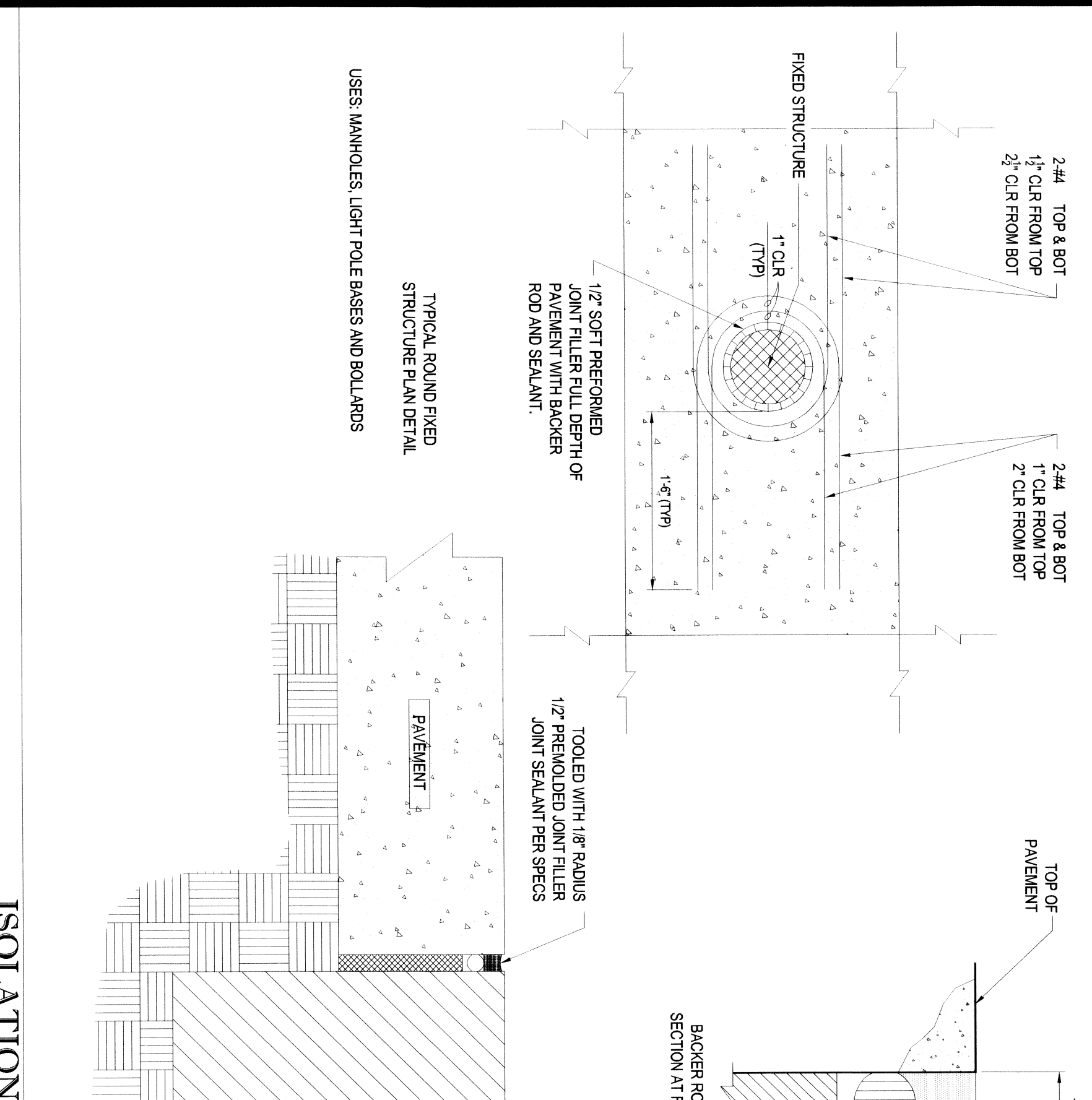
STORM SEWER TRENCH AND BEDDING

N.T.S.



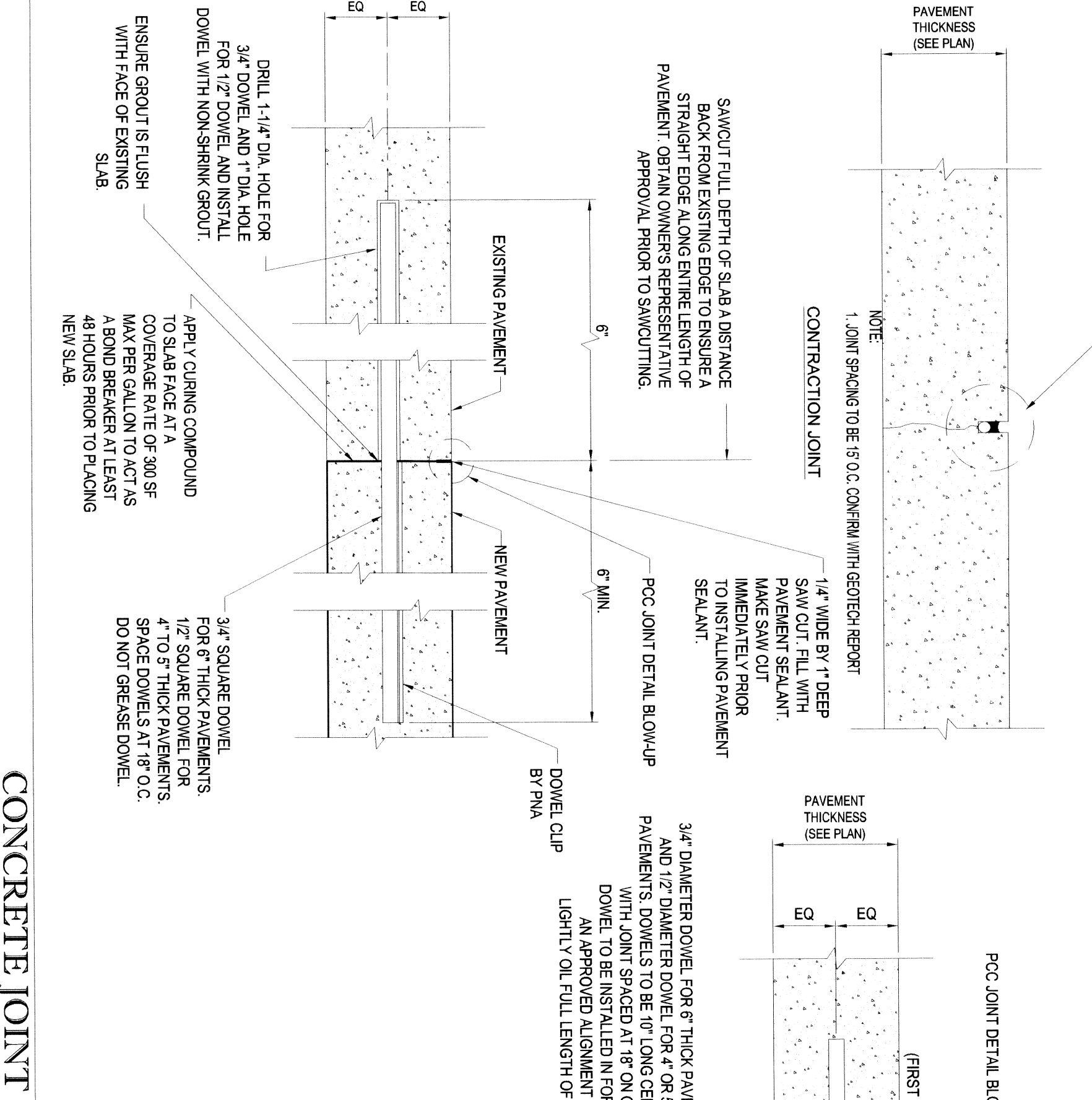
TYPICAL HYDRANT & VALVE INSTALLATION

N.T.S.



ISOLATION JOINT DETAILS

N.T.S.



CONCRETE JOINT DETAILS

N.T.S.

BOHLER ENGINEERING

CIVIL & CONSULTING ENGINEERS

CORPORATE OFFICE: WARRERS, NJ

PROJECT MANAGERS: CHALFANT, PA; STERLING, MD; WASHINGTON, VA; FORT LAUDERDALE, FL

ENVIRONMENTAL CONSULTANTS: FARMERS, VA; FORT LAUDERDALE, FL

LANDSCAPE ARCHITECTS: FARMERS, VA; FORT LAUDERDALE, FL

REVISIONS

NO.	DATE	BY	REVISIONS
1	6/20/11	MSB	REVISION TO TOWN
2	8/21/11	MSB	REVISION TO TOWN
3	11/14/11	MSB	REVISION TO TOWN
4	12/14/11	MSB	REVISION TO TOWN
5	01/23/12	MSB	REVISION TO TOWN
6	01/23/12	MSB	REVISION TO TOWN
7	01/23/12	MSB	REVISION TO TOWN
8	01/23/12	MSB	REVISION TO TOWN
9	01/23/12	MSB	REVISION TO TOWN
10	01/23/12	MSB	REVISION TO TOWN
11	01/23/12	MSB	REVISION TO TOWN
12	01/23/12	MSB	REVISION TO TOWN

PERMIT SET

NO.	DATE	BY	REVISIONS
1	01/23/12	MSB	REVISION TO TOWN
2	01/23/12	MSB	REVISION TO TOWN
3	01/23/12	MSB	REVISION TO TOWN
4	01/23/12	MSB	REVISION TO TOWN
5	01/23/12	MSB	REVISION TO TOWN
6	01/23/12	MSB	REVISION TO TOWN
7	01/23/12	MSB	REVISION TO TOWN
8	01/23/12	MSB	REVISION TO TOWN
9	01/23/12	MSB	REVISION TO TOWN
10	01/23/12	MSB	REVISION TO TOWN
11	01/23/12	MSB	REVISION TO TOWN
12	01/23/12	MSB	REVISION TO TOWN

Walmart

STORE # 2184-07

PROPOSED RETAIL DEVELOPMENT

1900 FALL RIVER AVENUE, E

BRISTOL COUNTY, MA

BOHLER ENGINEERING

302 TORRANCE ROAD

BRISTOL COUNTY, MA

PHONE: (508) 465-9880

FAX: (508) 465-9880

WWW.BOHLERENGINEERING.COM

CONSTRUCTION DETAIL SHEET

SHEET NUMBER: **D-2**

REV: 5/01/22/2012