

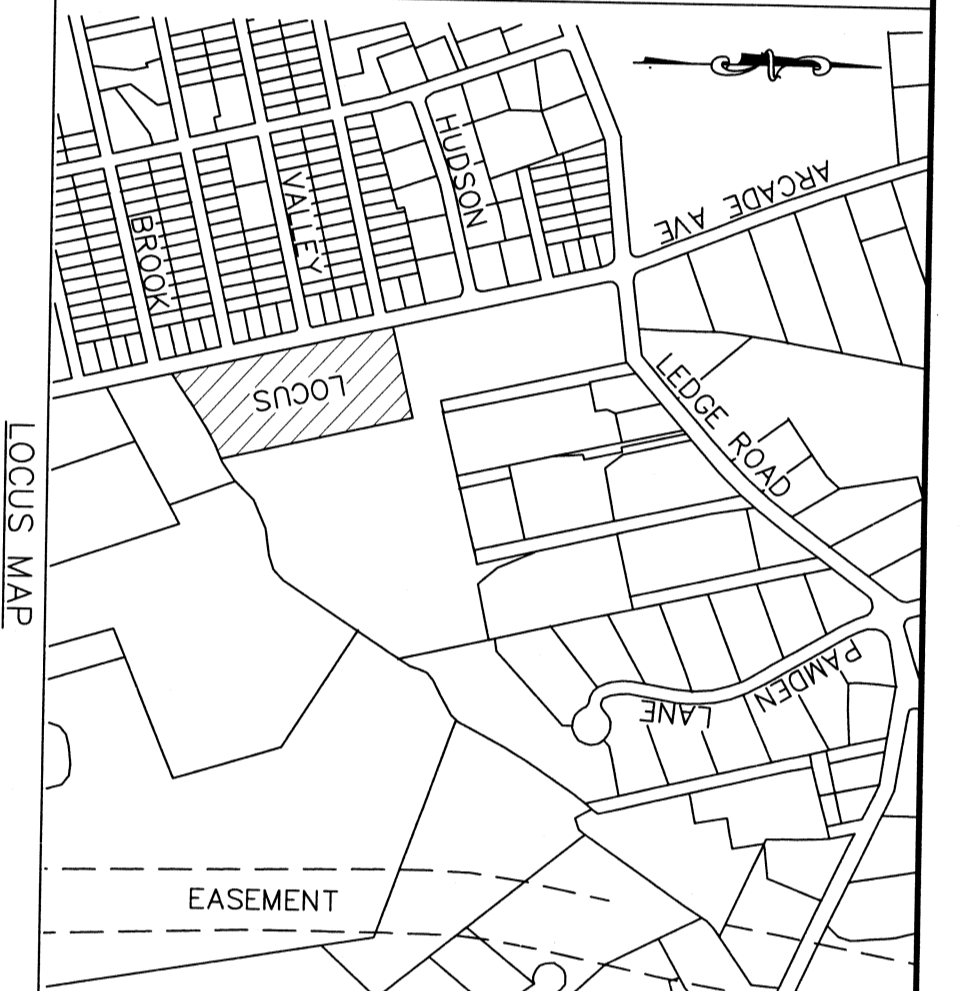
JOINING SCHEDULE
 LOT 4 (REGISTERED)
 12,000 S.F.
 120' x 100' x 120' x 100'
 120' x 100' x 120' x 100'
 120' x 100' x 120' x 100'

N/F DIAS
 MAP 18 LOT 202
 PLAN BOOK 464 PAGE 73 LOT 5
 AREA=187,206±S.F. (4,298±AC.)

LC PLAN 16727-G

RUNNERS RIVER

N/F TOWN OF SEERONK
 DEED BOOK 391 PAGE 174



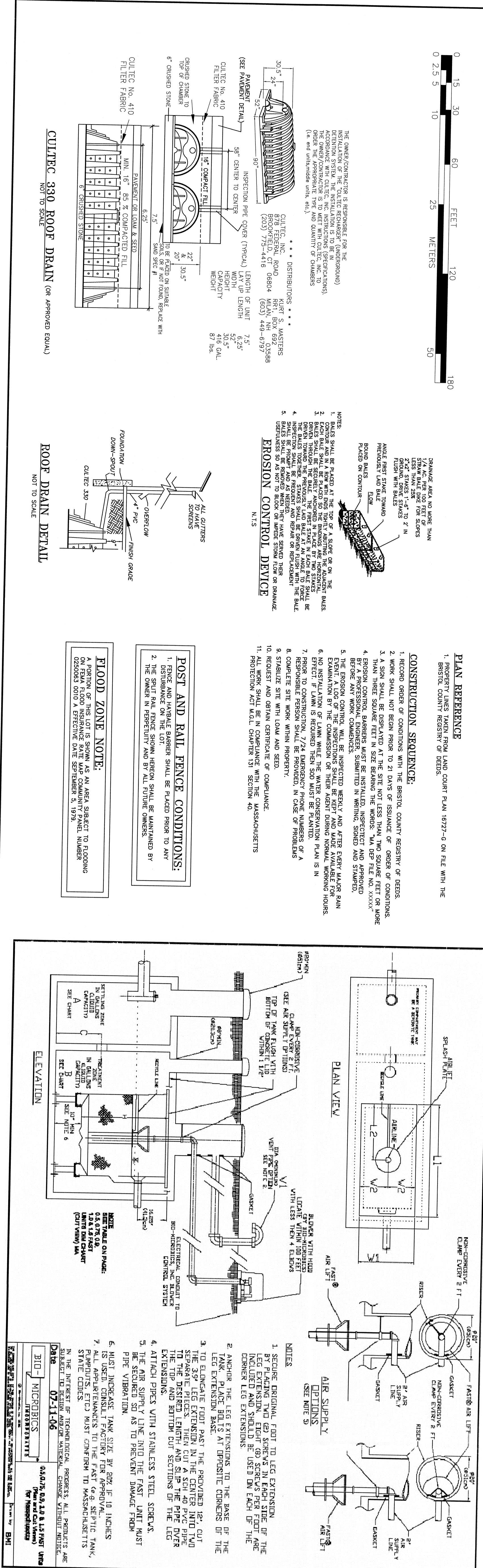
ERUBILIZER AND PESTICIDE LIMITATIONS:
 IMPROVED COVERAGE
 DRIVENAW 1,884 S.F.
 HOUSE 1,171 S.F.
 TOTAL 2,925 S.F.
 % LOT AREA 1.02%

RIPARIAN ZONE DISTURBANCE
 0-100' 0 S.F. 0%
 100-200' 8,432±S.F. (100.98±A.C.) 8.1%

BIFFER ZONE DISTURBANCE
 0-25' 0 S.F. 0%
 25-50' 2,396±S.F. 2.3%
 50-100' 5,596±S.F. 5.5%

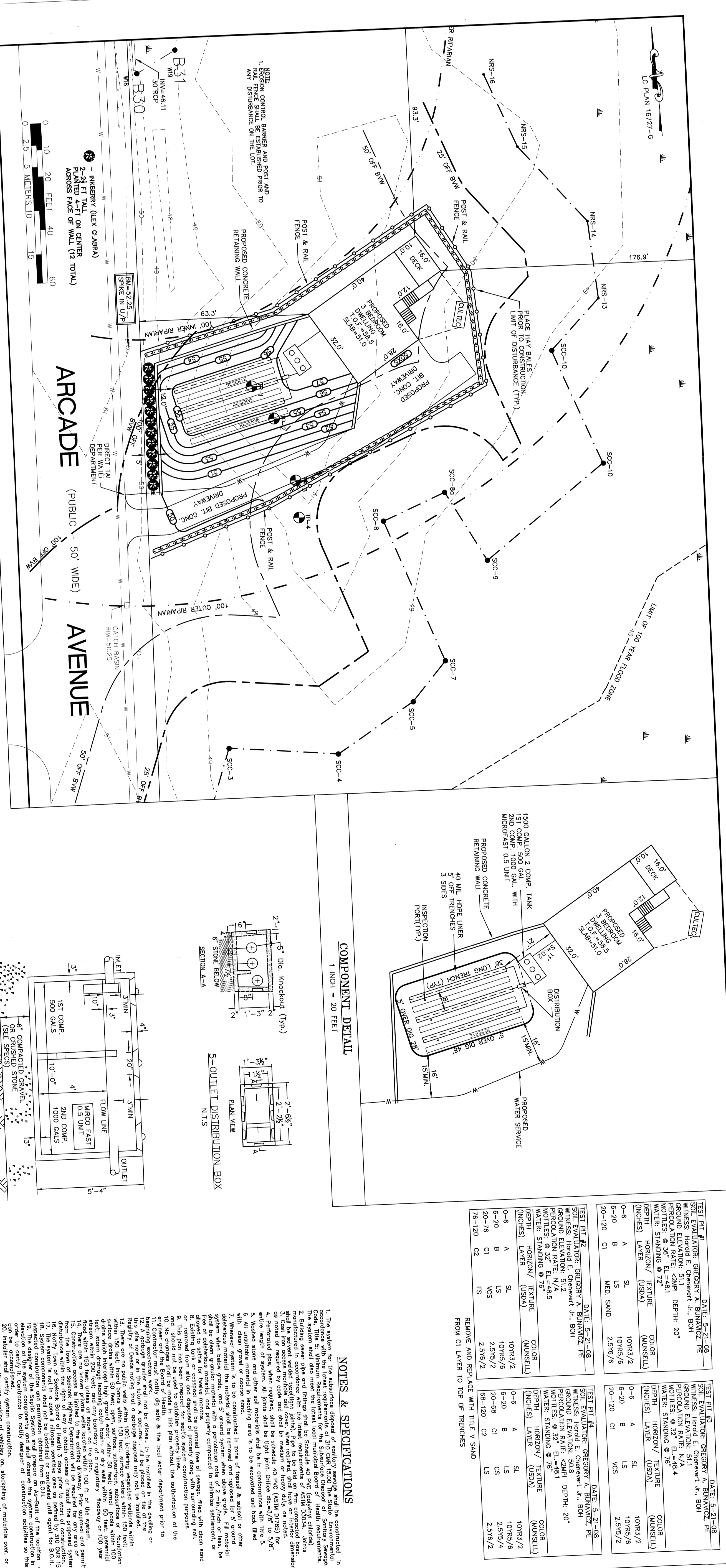
I certify that the above information has been obtained from a reliable source and is true and correct to the best of my knowledge and belief. I am a duly licensed Professional Engineer in the State of Massachusetts, No. 12722.

BORDERLAND ENGINEERING, INC.
 30 Oakhill Drive
 Johnston, RI 02919
 Phone: 401-885-0841
 Fax: 401-885-0841



OWNER / APPLICANT: John Dias
PROJECT NUMBER: P1716
DRAWING SCALE: 1 INCH = 20 FEET
DATE: MAY 18, 2010

PROJECT NUMBER: P1716
SHEET 1 OF 2



NOTES & SPECIFICATIONS

- The project is located in the riparian zone of the Runners River. The riparian zone is defined as the area within 100 feet of the riverbank. The riparian zone is highly sensitive to disturbance and requires special protection measures.
- The riparian zone disturbance is defined as the area within 100 feet of the riverbank that is disturbed by the project. The riparian zone disturbance is highly sensitive to disturbance and requires special protection measures.
- The riparian zone disturbance is defined as the area within 100 feet of the riverbank that is disturbed by the project. The riparian zone disturbance is highly sensitive to disturbance and requires special protection measures.
- The riparian zone disturbance is defined as the area within 100 feet of the riverbank that is disturbed by the project. The riparian zone disturbance is highly sensitive to disturbance and requires special protection measures.
- The riparian zone disturbance is defined as the area within 100 feet of the riverbank that is disturbed by the project. The riparian zone disturbance is highly sensitive to disturbance and requires special protection measures.
- The riparian zone disturbance is defined as the area within 100 feet of the riverbank that is disturbed by the project. The riparian zone disturbance is highly sensitive to disturbance and requires special protection measures.
- The riparian zone disturbance is defined as the area within 100 feet of the riverbank that is disturbed by the project. The riparian zone disturbance is highly sensitive to disturbance and requires special protection measures.
- The riparian zone disturbance is defined as the area within 100 feet of the riverbank that is disturbed by the project. The riparian zone disturbance is highly sensitive to disturbance and requires special protection measures.
- The riparian zone disturbance is defined as the area within 100 feet of the riverbank that is disturbed by the project. The riparian zone disturbance is highly sensitive to disturbance and requires special protection measures.
- The riparian zone disturbance is defined as the area within 100 feet of the riverbank that is disturbed by the project. The riparian zone disturbance is highly sensitive to disturbance and requires special protection measures.

OWNER / APPLICANT: John Dias
PROJECT NUMBER: P1716
DRAWING SCALE: 1 INCH = 20 FEET
DATE: MAY 18, 2010

PROJECT NUMBER: P1716
SHEET 2 OF 2