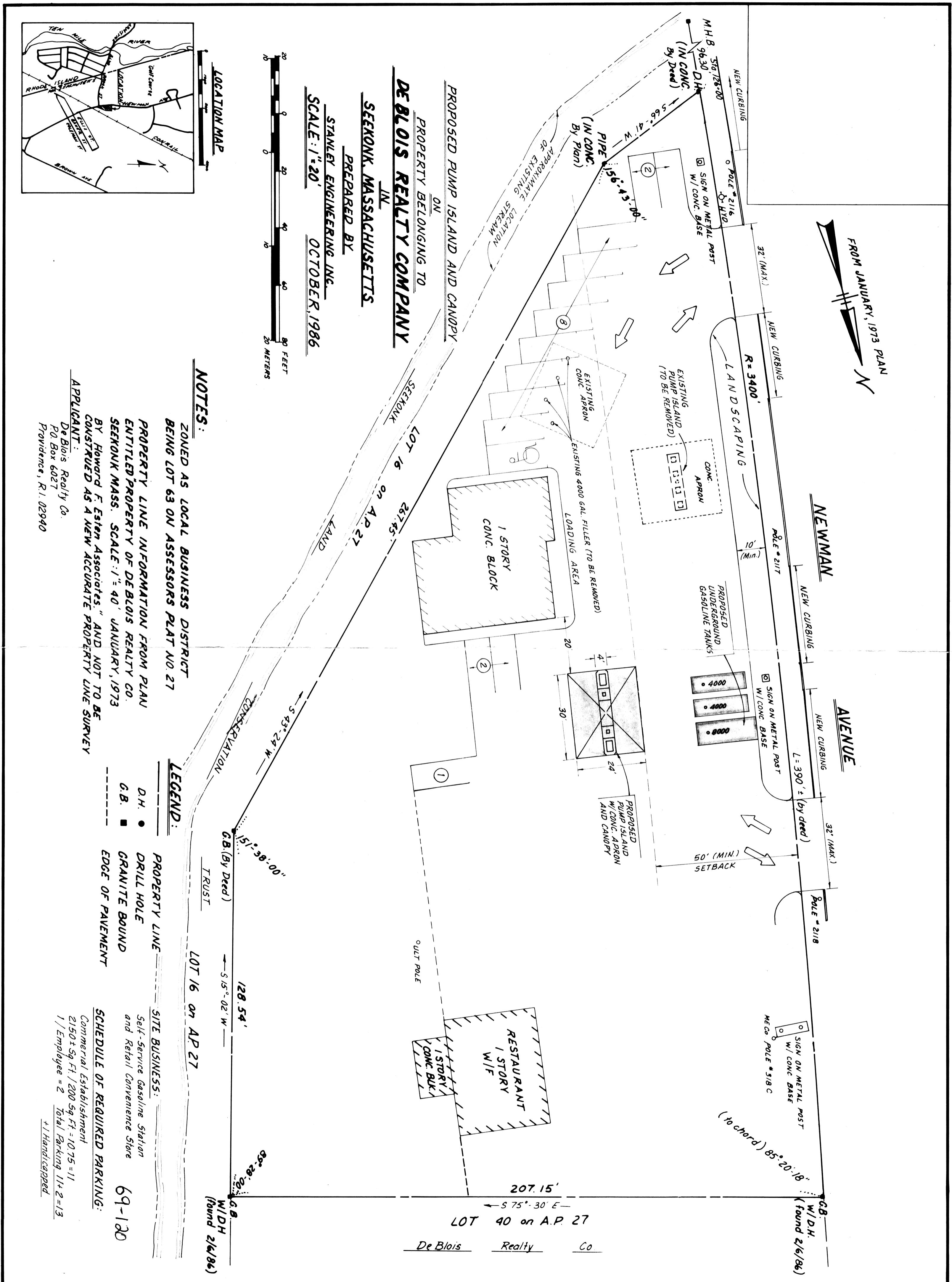
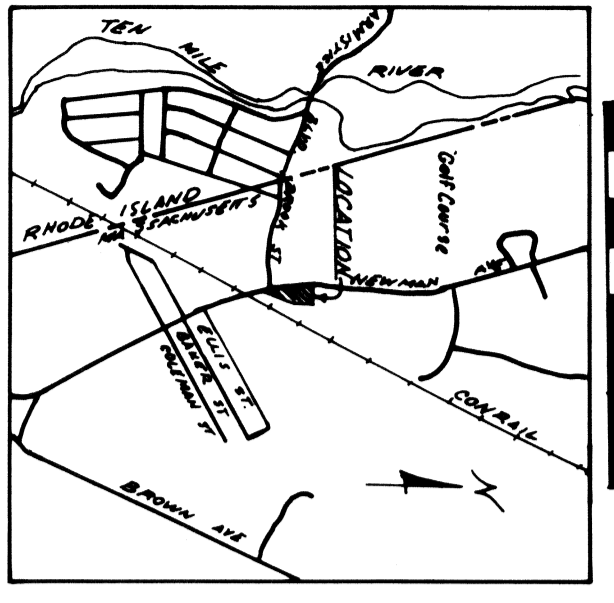
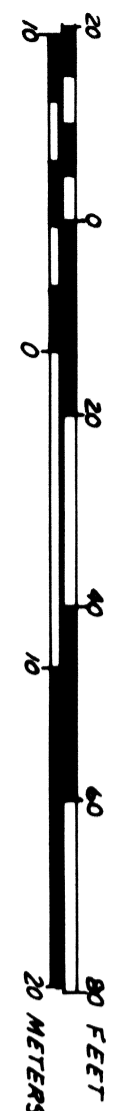


FROM JANUARY, 1973 PLAN  
N



PROPOSED PUMP ISLAND AND CANOPY  
ON  
PROPERTY BELONGING TO  
**DE BLOIS REALTY COMPANY**  
IN  
SEEKONK, MASSACHUSETTS  
PREPARED BY  
STANLEY ENGINEERING INC.  
SCALE: 1"=20'  
OCTOBER, 1986



**NOTES:**  
ZONED AS LOCAL BUSINESS DISTRICT  
BEING LOT 63 ON ASSESSORS PLAT NO 27  
PROPERTY LINE INFORMATION FROM PLAN  
ENTITLED PROPERTY OF DE BLOIS REALTY CO.  
SEEKONK MASS. SCALE: 1"=40' JANUARY, 1973  
BY HOWARD F. ESTEN ASSOCIATES, AND NOT TO BE  
CONSTRUED AS A NEW ACCURATE PROPERTY LINE SURVEY  
APPLICANT:  
De Blois Realty Co.  
P.O. Box 6027  
Providence, R.I. 02940

**LEGEND:**  
PROPERTY LINE  
D.H. ● DRILL HOLE  
G.B. ■ GRANITE BOUND  
EDGE OF PAVEMENT  
SITE BUSINESS:  
Self-Service Gasoline Station  
and Retail Convenience Store  
SCHEDULE OF REQUIRED PARKING:  
Commercial Establishment  
2150 ± Sq. Ft. / 200 Sq. Ft. = 10.75 = 11  
1 / Employee = 2 Total Parking 11 + 2 = 13  
+ 1 Handicapped

LOT 40 on A.P. 27  
De Blois Realty Co.