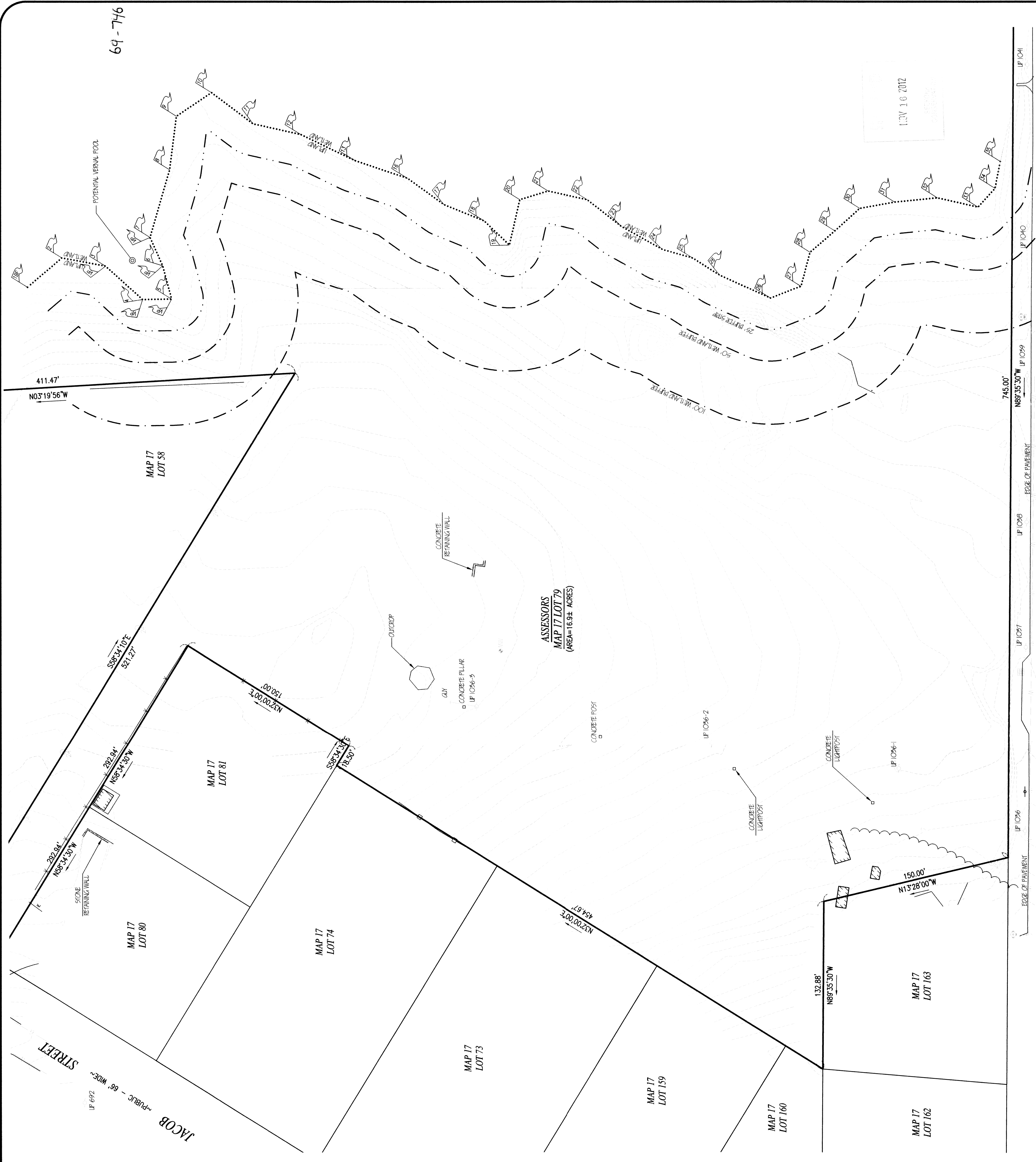


**LEGEND**

DESCRIPTION	SYMBOL
PROPERTY LINE	Solid line
CONTOUR LINE	Dashed line
EDGE OF PAVEMENT	Line with inward-pointing ticks
FENCE	Line with short perpendicular dashes
GUARDRAIL	Line with long and short perpendicular dashes
LIMIT OF CLEARING	Line with long and short perpendicular dashes
SIGN	Symbol of a sign post
UTILITY POLE	Symbol of a utility pole
GUY WIRE	Symbol of a guy wire
WETLAND FLAG	Symbol of a flag
VERNAL POOL FLAG	Symbol of a flag with a circle
HYDRANT	Symbol of a hydrant
CATCH BASIN	Symbol of a catch basin
MONITORING WELL	Symbol of a monitoring well



REVISIONS

NO.	DATE	DESCRIPTION
1	10/17/12	PER CON COMA
2	11/15/12	ADD POTENTIAL VERNAL POOL AREA

**THOMPSON-FARLAND**  
PROFESSIONAL ENGINEERS // LAND SURVEYORS  
www.ThompsonFarland.com  
(MAIN OFFICE) 398 COUNTY STREET, NEW BEDFORD, MA 02740 P.508.717.3479  
NEW BEDFORD | TAUNTON | CAMBRIDGE | MARLBOROUGH

DRAWN BY: AEC  
DESIGNED BY: CAF  
CHECKED BY: CAF

WETLAND DELINEATION PLAN  
TAUNTON AVENUE  
ASSESSORS MAP 17 LOT 79  
SEEKONK, MASSACHUSETTS

PREPARED: MATTHEW ANTONIO  
FOR: 558 GAR. HIGHWAY  
SMANSEA, MA 02777

OCTOBER 9, 2012  
SCALE: 1"=40'  
JOB NO. 12-325  
LATEST REVISION:  
NOVEMBER 15, 2012

**RECORD OWNER:**  
ASSESSORS MAP 17 LOT 79  
HENRY D & MARY F. ROSE  
245 WARREN AVE

TAUNTON AVENUE ~PUBLIC - 60' WIDE~ (U.S. ROUTE 44)

**NOTES:**  
1. TOPOGRAPHIC AND PROPERTY LINE SURVEY PERFORMED BY THOMPSON FARLAND, INC. IN OCTOBER 2012.  
2. VERTICAL ELEVATIONS REFER TO AN ASSUMED DATUM.

**FLOOD NOTE:**  
BY GRAPHIC PLOTTING ONLY THE PROPERTY DEPICTED ON THIS PLAN FALLS IN ZONE X AS SHOWN ON THE FLOOD