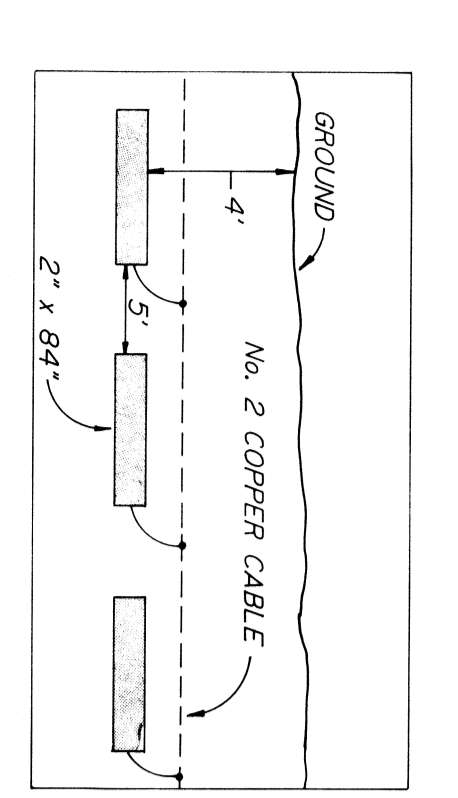
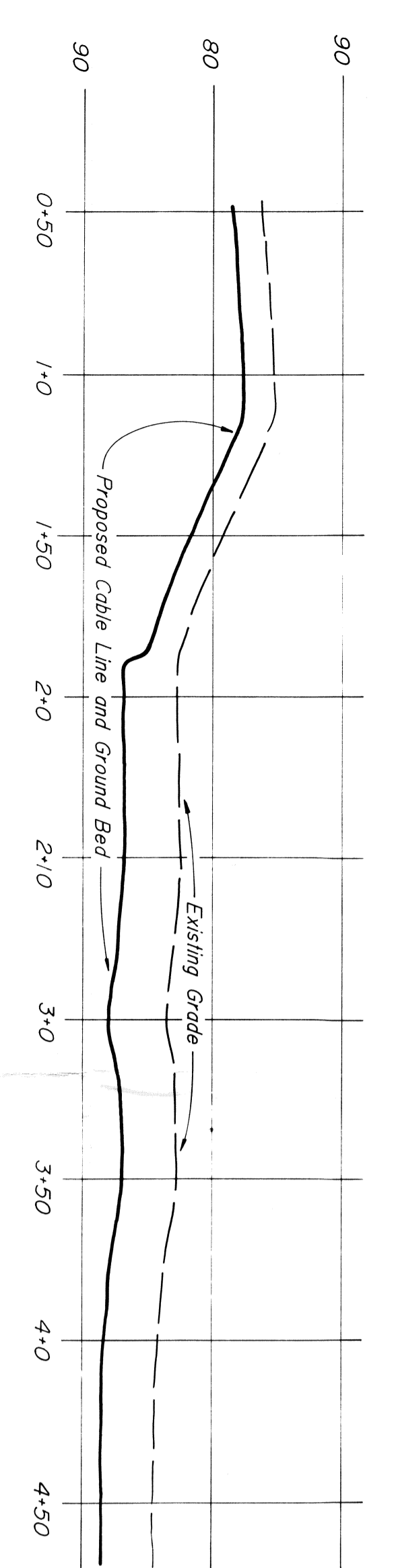
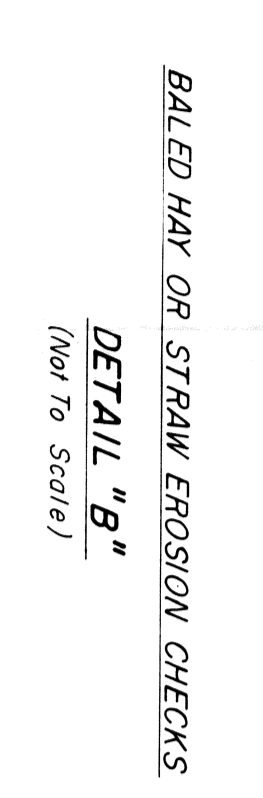
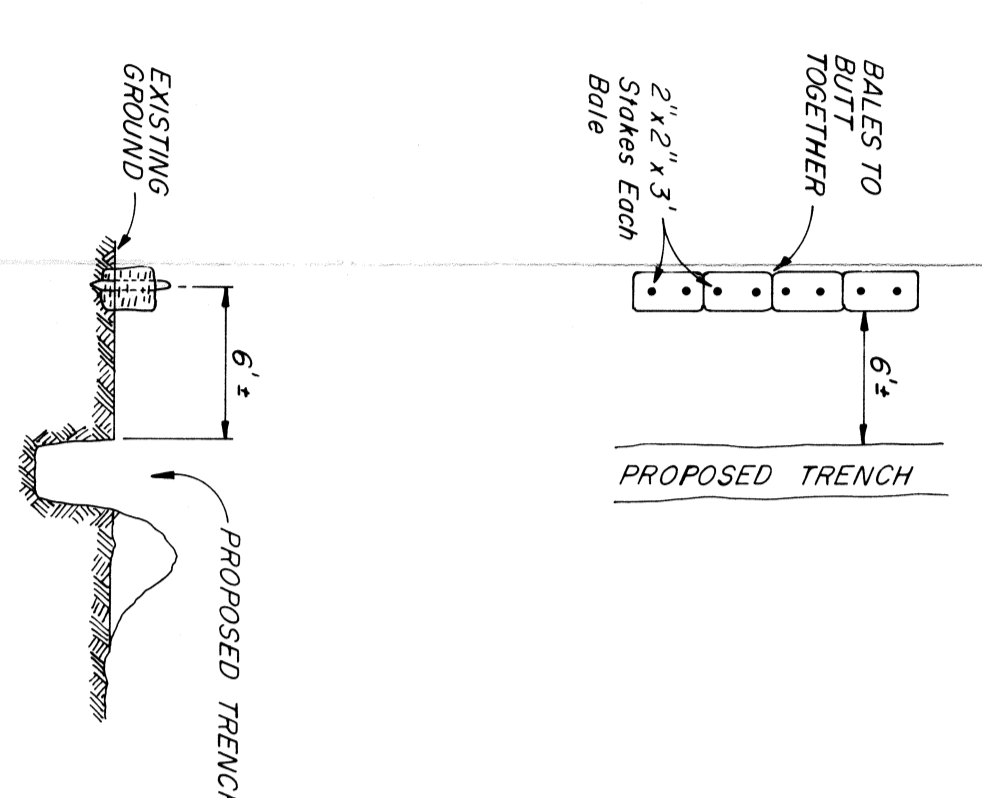
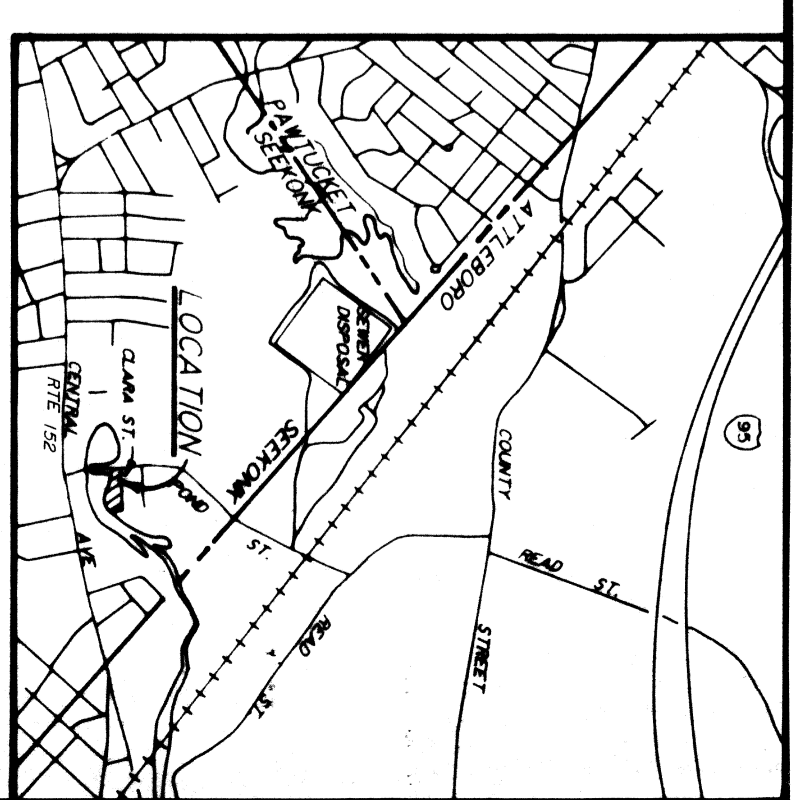
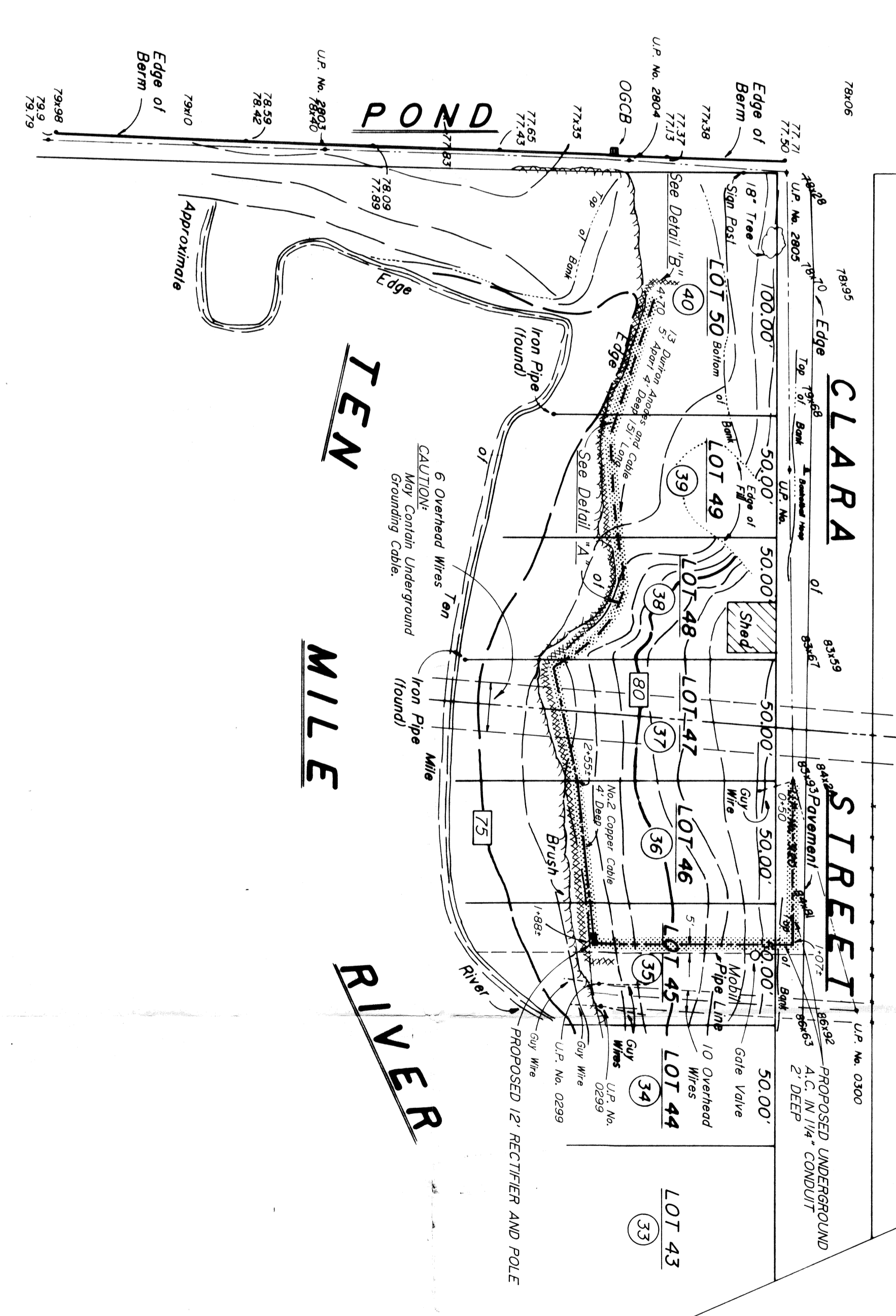


MARION STREET

STREET



- LEGEND:**
- UTILITY POLE & NUMBER
 - OPEN GRATE CATCH BASIN
 - CHAIN LINK FENCE
 - ASSESSORS PLAT No. 32 LOT No. 49
 - OAK GROVE TERRACE LOT No. 40
(See Plan Reference No. 1)
 - PROPOSED ANODES & CABLE
 - PROPOSED No. 2 COPPER CABLE
 - BALED HAY OR STRAW EROSION CHECKS



OWNERS:

PAUL W. & CAROL PETZOL L. - ASSESSORS PLAT No. 32
LOTS 43, 44, 45, 46, & 47

KENNETH & GABRIEL MARBLE - ASSESSORS PLAT No. 32
LOTS 48, 49, & 50

PLAN REFERENCE:

PLAN ENTITLED "OAK GROVE TERRACE BELONGING TO GLOBE LAND CO. OF PROUD PLAT" RECORDED ON AUG. 31, 1968, 40 - 1 - 1 - J.E. JUDSON C.E.
PAWTUCKET, R.I.
RECORDED IN PLAT BOOK 18 ON PAGE 18, IN TAUNTON, MASSACHUSETTS.

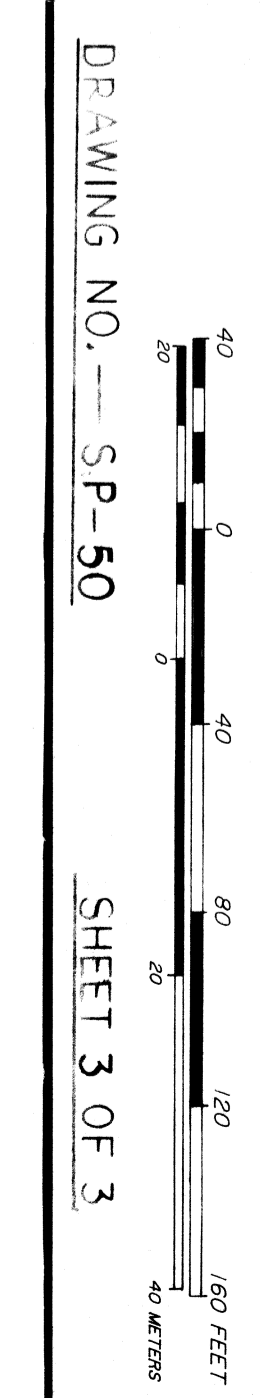
69-2a7

PLAN OF PROPOSED CATHODIC PROTECTION UNIT
SEEKONK, MASSACHUSETTS

FOR
MOBIL PIPE LINE COMPANY
PREPARED BY
STANLEY ENGINEERING, INC.
33 ALEXANDER AVENUE
EAST PROVIDENCE, R.I. 02914

SCALE: 1" = 40'

JANUARY, 1990



STANLEY ENGINEERING, INC.
33 ALEXANDER AVENUE
EAST PROVIDENCE, R.I. 02914