

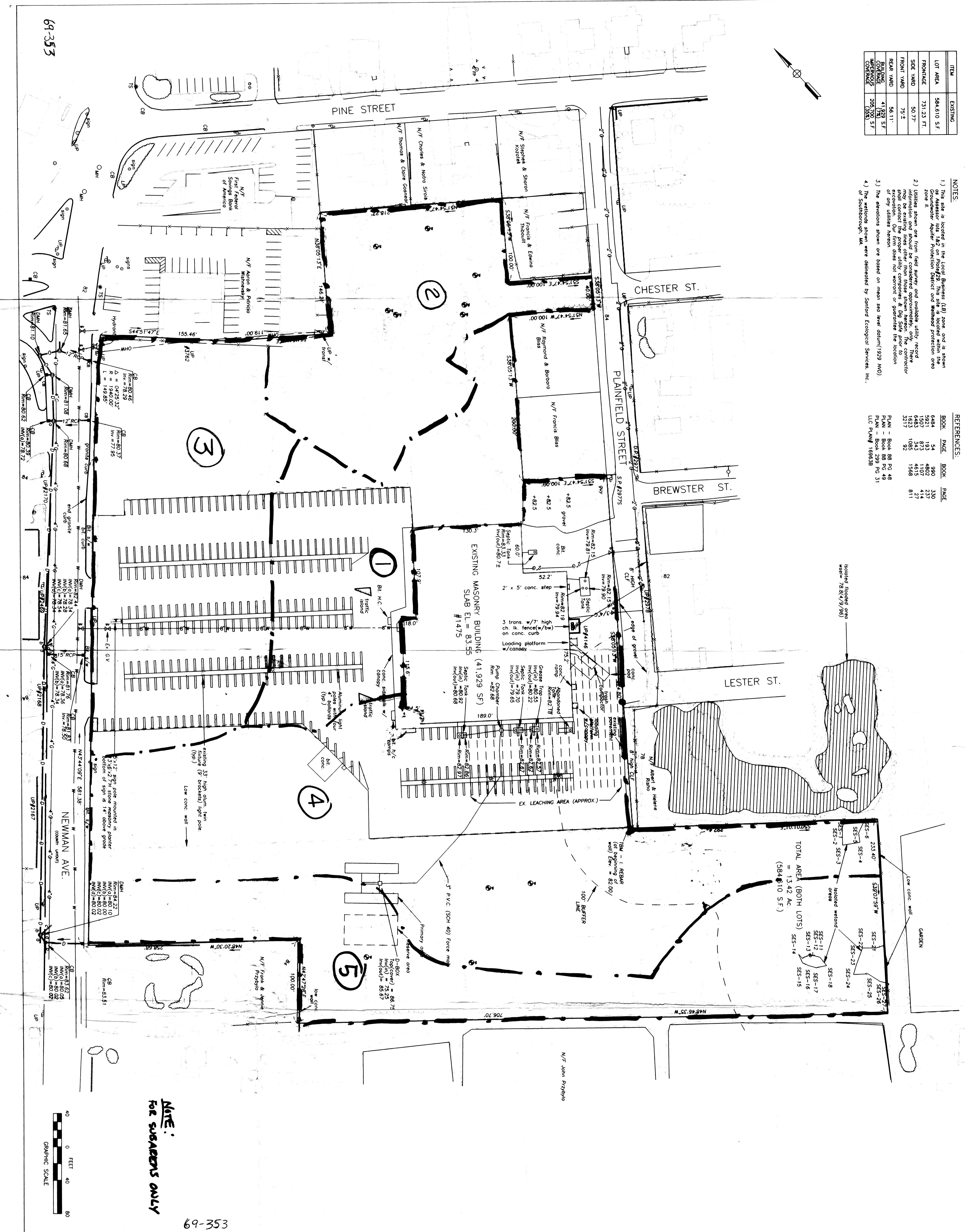
ITEM	EXISTING
LOT AREA	584,610 S.F.
FRONTAGE	731.23 FT.
FRONT YARD	50.77'
FRONT YARD	75.4'
REAR YARD	56.11'
REAR YARD	41.22' S.F.
REAR YARD	205,700 S.F.
REAR YARD	(584,610 S.F.)

- NOTES:**
- This site is located in the Local Business (LB) zone and is shown as Assessor lots #82 on page #29. This site is located within the Groundwater Aquifer Protection District and Wetland protection area zone II.
 - Utilities shown are from field surveys and available utility records. They may be existing lines other than those shown hereon. The contractor shall contact the appropriate utility companies to determine the location of any utilities hereon.
 - The elevations shown are based on mean sea level datum (1928 M.D.) of Southborough, MA.
 - The wetlands shown were delineated by Sanford Ecological Services, Inc.

REFERENCES:

BOOK	PAGE	BOOK	PAGE
6804	64	899	319
5921	193	4802	237
1507	873	1107	414
6483	1048	4538	811
3217	92		

PLAN - Book 88 Pg. 48
 P.L.M. - Book 88 Pg. 49
 P.L.C. - Book 88 Pg. 51
 L.C. PLAN 1995B



NOTE:
 FOR SUBAREAS ONLY

69-353

**- EXIST'G CONDITION SUBAREAS -
 EXISTING CONDITIONS**

#1475 NEWMAN AVENUE
 SEEKONK, MA

PREPARED BY:
 BRUCE SALUK & ASSOC., INC.
 CIVIL ENGINEERS & LAND SURVEYORS
 576 BOSTON POST ROAD
 MARLBOROUGH, MA 01752
 SCALE: 1" = 40'

EX

PREPARED FOR:
 RO-JACK'S FOOD STORES
 800 SOUTH MAIN STREET
 MANSFIELD, MA 02048
 DATE: MAY 27, 1996

NO.	DATE	DESCRIPTION	BY