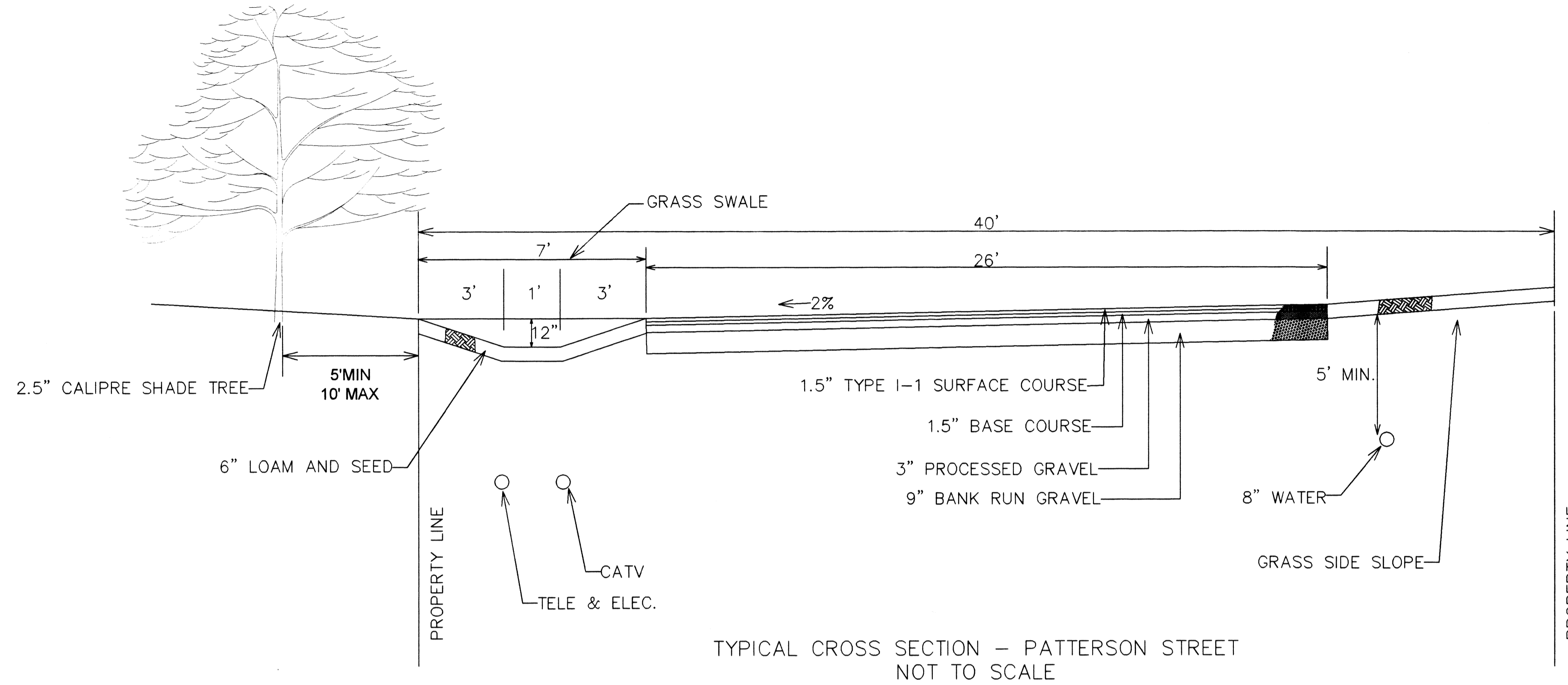


APPROVAL BY SEEKONK BOARD OF HEALTH

\_\_\_\_\_  
 \_\_\_\_\_  
 \_\_\_\_\_  
 \_\_\_\_\_  
 \_\_\_\_\_

SEEKONK BOARD OF HEALTH

DATE APPROVED \_\_\_\_\_



FOR REGISTRY USE ONLY

APPROVAL UNDER SUBDIVISION CONTROL LAW REQUIRED.

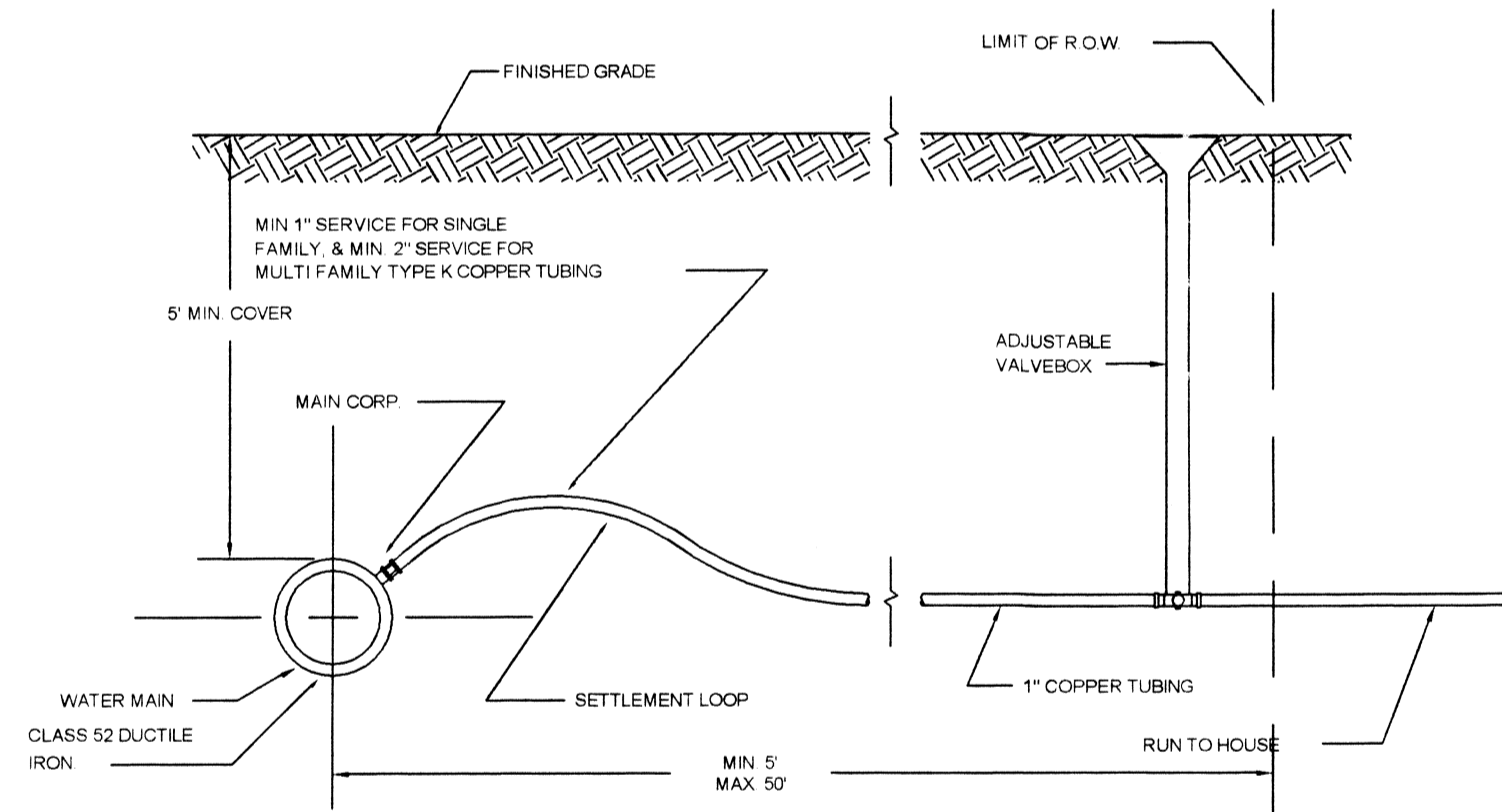
\_\_\_\_\_  
 \_\_\_\_\_  
 \_\_\_\_\_  
 \_\_\_\_\_  
 \_\_\_\_\_

SEEKONK PLANNING BOARD

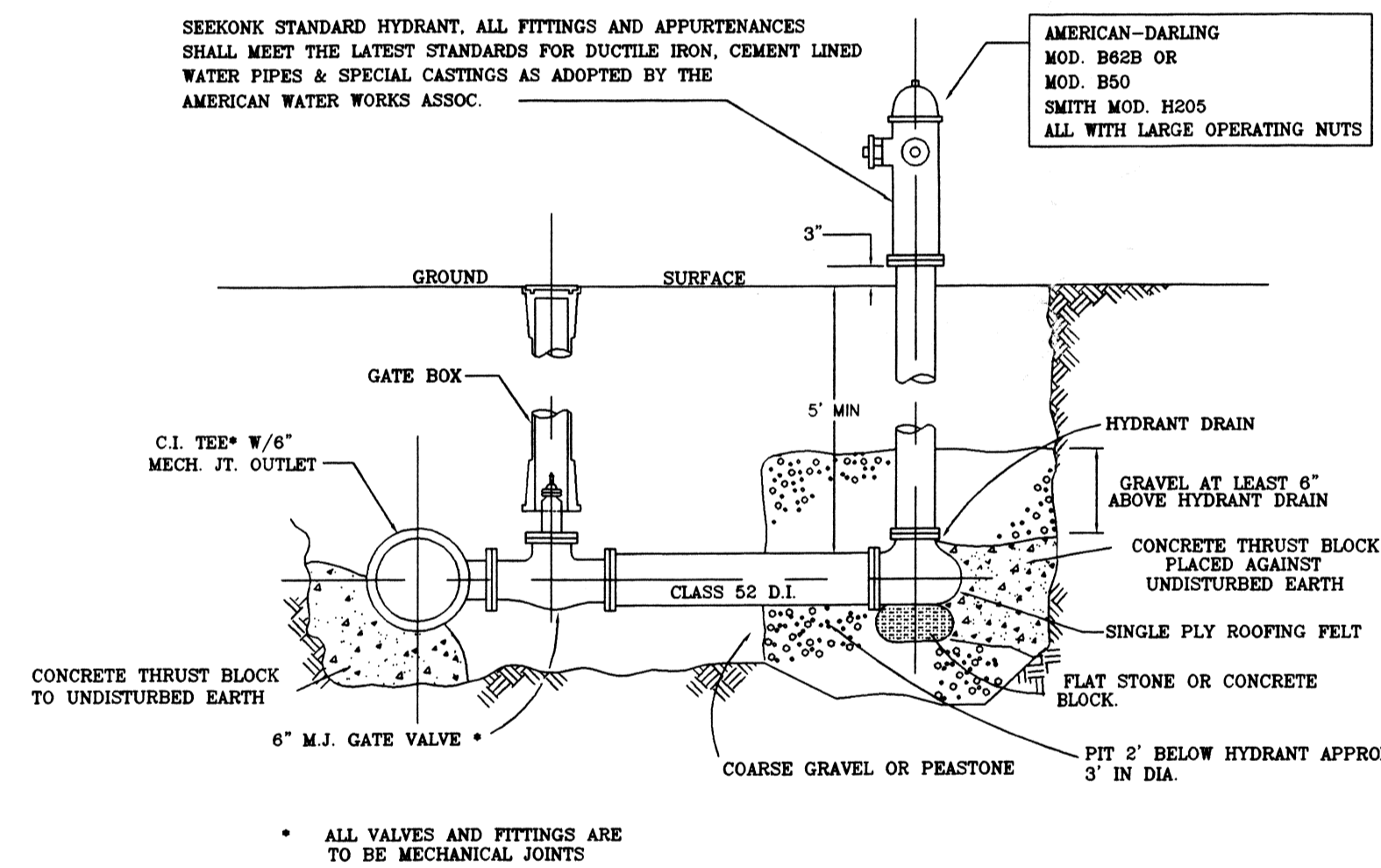
DATE APPROVED \_\_\_\_\_ DATE ENDORSED \_\_\_\_\_

I CERTIFY THAT 20 DAYS HAVE ELAPSED SINCE PLANNING BOARD APPROVAL AND THAT NO APPEAL HAS BEEN FILED.

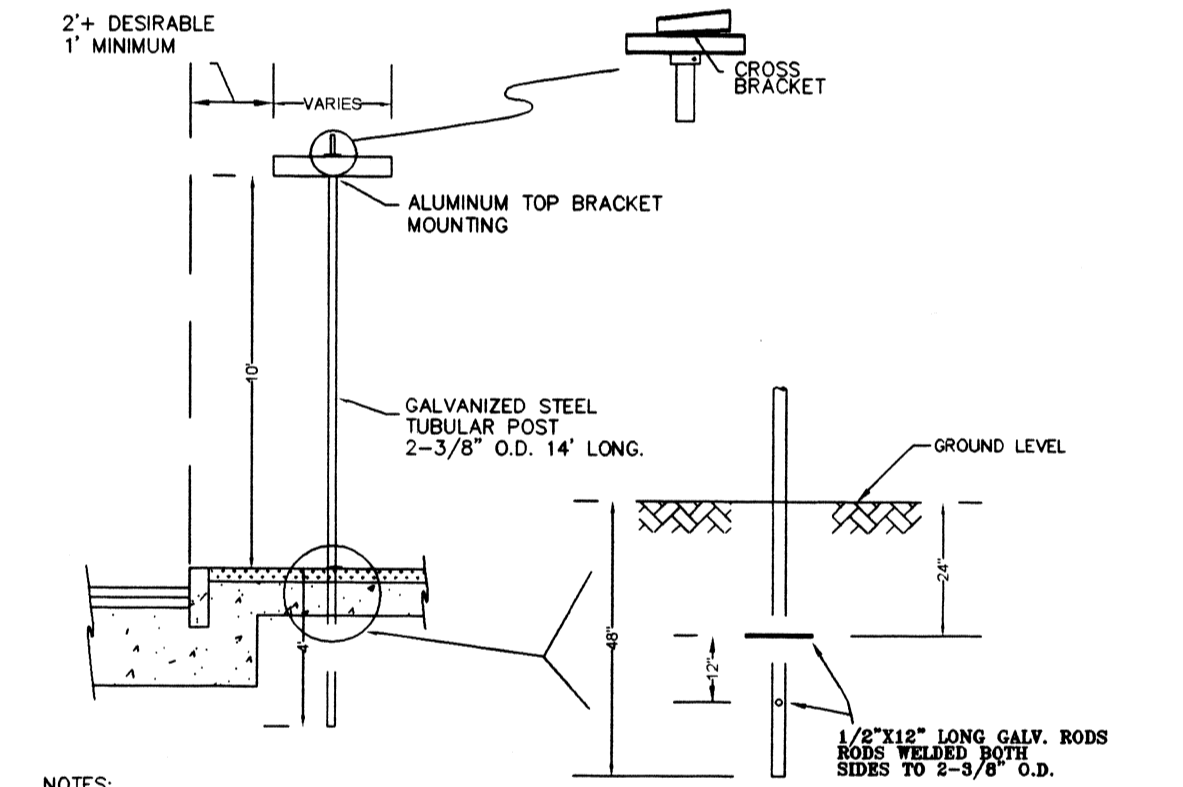
TOWN CLERK \_\_\_\_\_ DATE: \_\_\_\_\_



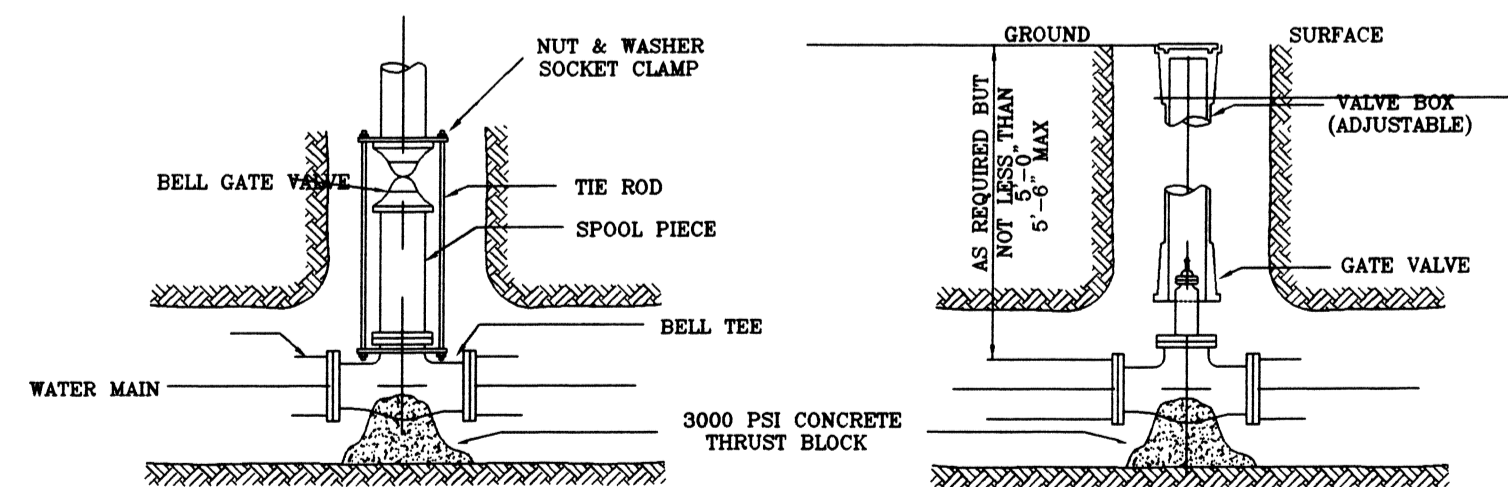
TYP. PERMANENT SERVICE CONNECTION (NOT TO SCALE)



STANDARD HYDRANT DETAIL (NOT TO SCALE)

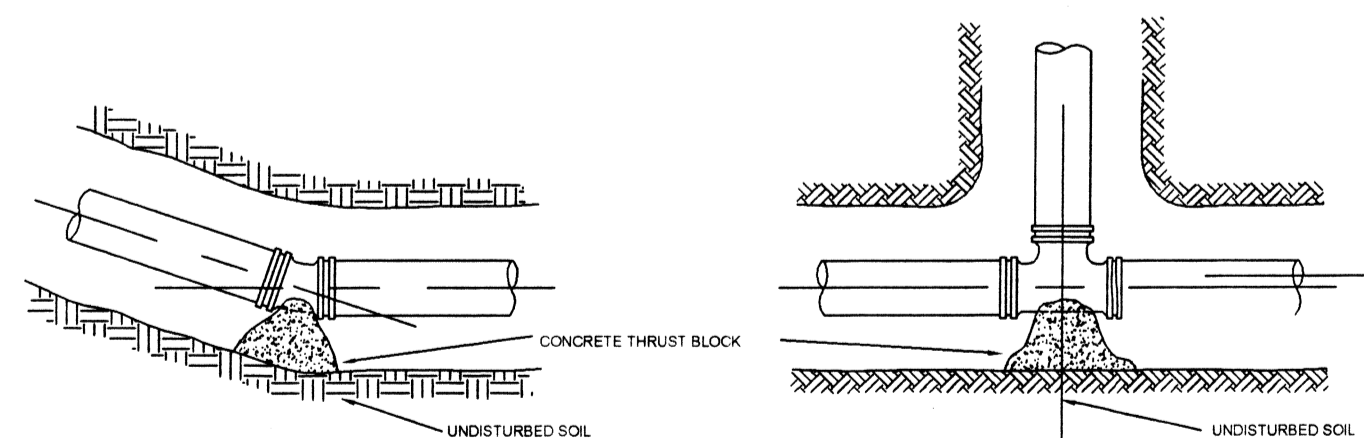


STREET SIGN DETAIL (NOT TO SCALE)



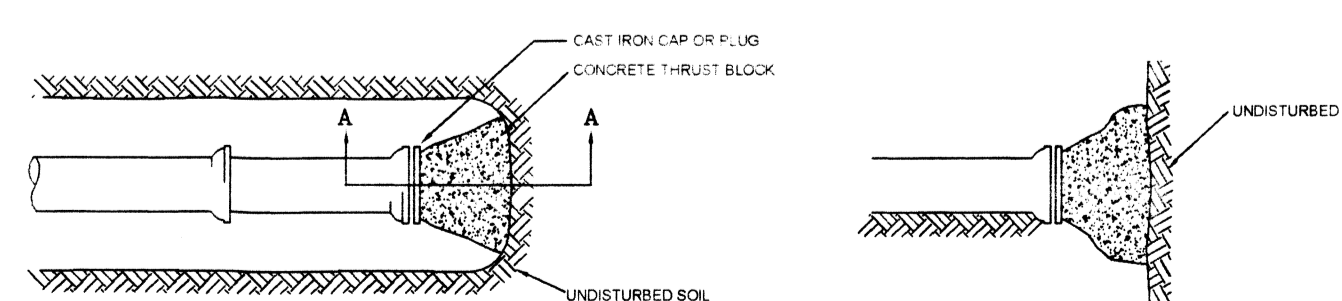
TYPICAL VALVE CONNECTION

TYPICAL GATE VALVE



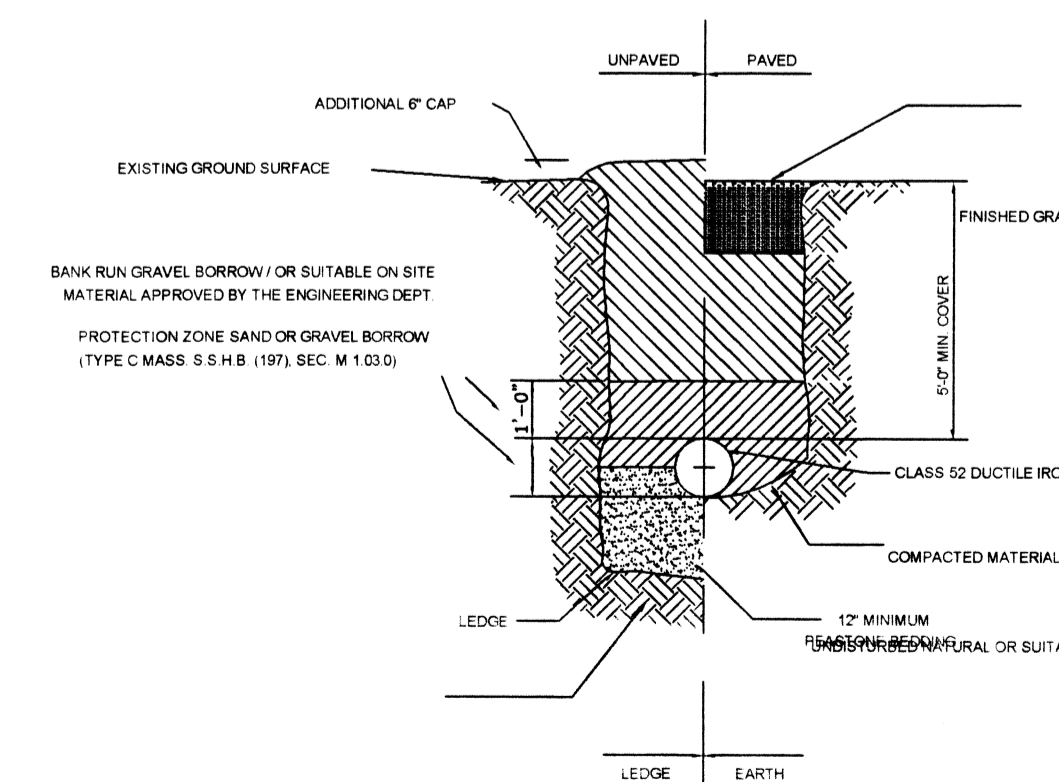
PLAN HORIZONTAL BEND

PLAN TEE



PLAN PLUG

SECTION A-A



TYP. WATER TRENCH (NOT TO SCALE)

THRUST BLOCK REQUIREMENTS	
FITTING	MIN BEARING AREA (SQ)
1/2" X 1/2" BEND	12
1/2" X 1/2" TEE	12
1/2" X 1/2" ELB	10
1/2" X 1/2" EL	9
1/2" X 1/2" EL	5
1/2" X 1/2" EL	5
1/2" X 1/2" EL	12
1/2" X 1/2" REDUCER	8
1/2" X 1/2" REDUCER	6
1/2" X 1/2" REDUCER	4
1/2" X 1/2" X 1/2" REDUCER	8
ALL TEES AND VALVES	10
HYDRANTS	9

THRUST BLOCK DETAILS (NOT TO SCALE)

APPLICANT JJC DEVELOPMENT CORP 20 BOSTON STREET EAST PROVIDENCE, RI 02914	DEFINITIVE SUBDIVISION PLAN PATERSON STREET ESTATES SEEKONK, MA
	Sheet 5 of 6 DETAIL SHEET I
	SCALE: AS SHOWN DATE: DEC. 18, 2003 MILLER ENGINEERING 21 BROOK ST - SEEKONK, MA 02771 (508) 761-7790

REV: 4/12/05  
 SHEET 5 OF 6